



Japan's Largest Producer of Electronic and Electrical Home Appliances
MATSUSHITA ELECTRIC

NATIONAL PANASONIC RADIOS & TRANSCIVERS



The world's first talking clock
radio literally tells the time.
RC-6900B



RF-60

FM Stereo Music Chamber. Very portable. Very personal. Micro-miniature circuitry.



RL-375B

RL-675

RL-274W/R

RL-316

RL-316

3-Band (MW/SW₁/SW₂) 7-Transistor
OTL and NFB circuit. 800 mW output and 10 cm speaker. Four "D" batteries. 1.8 kg without batteries.

RL-274W or R

2-Band (MW/SW) 8-Transistor
OTL and NFB circuit. Continuous tone control and fine tuning control. 2W output and 12 cm speaker. Six "D" batteries. 3.2 kg without batteries.

RL-375B

3-Band (MW/SW₁/SW₂) 8-Transistor 
AC/battery operation. Two 12 cm speaker and 2W output. Flywheel tuning. Continuous tone control and fine tuning. Magic meter, AC or six "D". 4 kg without batteries.

RL-675

6-Band (MW/SW₁~SW₅) 9-Transistor
Separated two speaker system (16 cm). Ceramic Filter. Push button band change, flywheel tuning system. Individual tone control for bass and treble, magic meter. Dial light. Six "D" batteries. 8 kg without batteries.

RL-106G

1-Band (MW) 6-Transistor
10 cm speaker and 800 mW output. Carrying handle. Four "D" batteries. 1.05 kg without batteries. Cabinet colors: Red or black.

The world's first talking clock
radio literally tells the time.
RC-6900B



RF-60

FM Stereo Music Chamber. Very portable. Very personal. Micro-miniature circuitry.

RL-375B



RL-274W/R

RL-316

RL-316

3-Band (MW/SW₁/SW₂) 7-Transistor

Otl and NFB circuit. 800 mW output and 10 cm speaker. Four "D" batteries. 1.8 kg without batteries.

RL-274W or R

2-Band (MW/SW) 8-Transistor

Otl and NFB circuit. Continuous tone control and fine tuning control. 2W output and 12 cm speaker. Six "D" batteries. 3.2 kg without batteries.

RL-375B

3-Band (MW/SW₁/SW₂) 8-Transistor

AC/battery operation. Two 12 cm speaker and 2W output. Flywheel tuning. Continuous tone control and fine tuning. Magic meter, AC or six "D". 4 kg without batteries.



RL-675

6-Band (MW/SW₁~SW₅) 9-Transistor

Separated two speaker system (16 cm). Ceramic Filter. Push button band change, flywheel tuning system. Individual tone control for bass and treble, magic meter. Dial light. Six "D" batteries. 8 kg without batteries.

RL-106G

1-Band (MW) 6-Transistor

10 cm speaker and 800 mW output. Carrying handle. Four "D" batteries. 1.05 kg without batteries. Cabinet colors: Red or black.

Table Radio



RL-134U

1-Band (SW) 6-Transistor

A bright table radio for the SW fan. 800 mW power matched with efficient 10 cm speaker. Four "D" batteries. SW range 2.3—10.0 MHz. 1.45 kg without batteries.

RL-131G

1-Band (MW) 6-Transistor

800 mW output and 10 cm speaker. Four "D" batteries. Cabinet color: sky blue, red. 1 kg without batteries.

RL-231W or R

2-Band (MW/SW) 6-Transistor

700 mW output through 10 cm dynamic speaker. Four "D" batteries. Cabinet color: sky blue or red. 1.45 kg without batteries.

RL-345

3-Band (MW/SW₁/SW₂) 8-Transistor

Trim blend of classic styling. Fine tuning for short wave reception and tone control. 2W output. 12 cm speaker. Six "D" batteries. 3.4 kg without batteries.

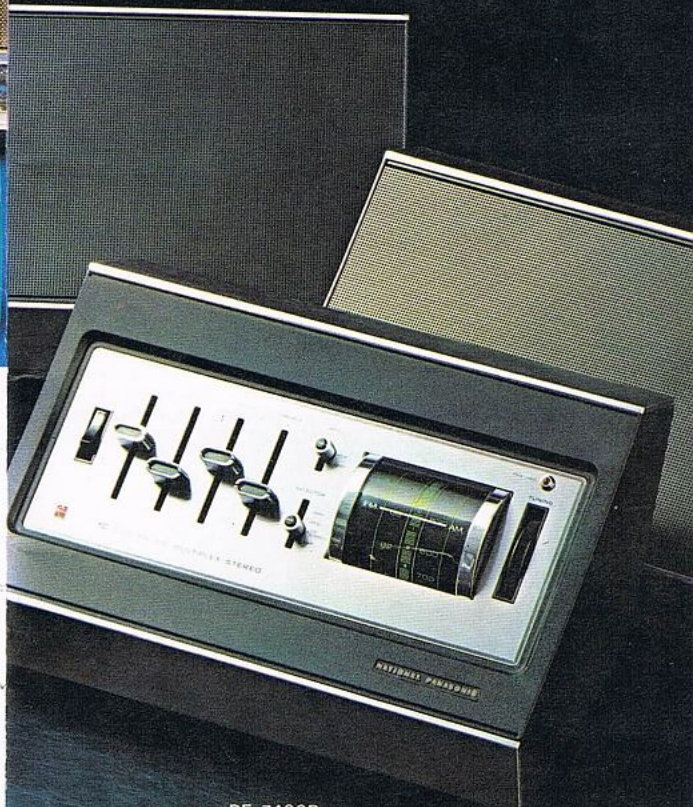
RL-455B



4-Band (MW/SW₁/SW₂/SW₃) 8-Transistor

Two speaker (12 cm) and rich 2W output. Flywheel tuning. AC/battery. Continuous tone control. AC or six "D". 5.4 kg without batteries.

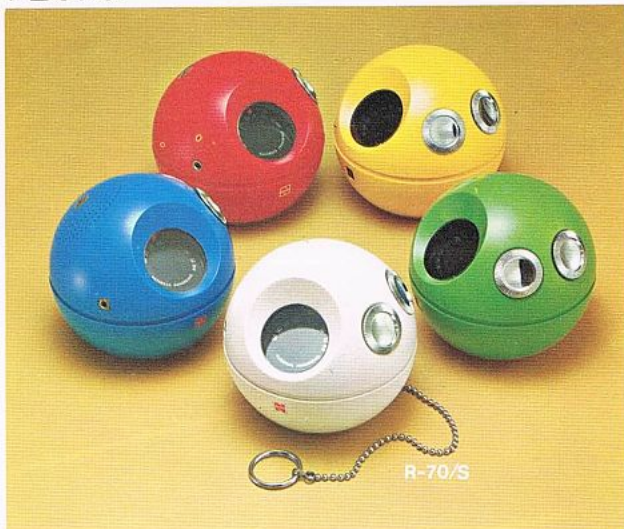
These three precision-built products symbolize all that is best from National Panasonic. Our policy is to use our vast technical resources and streamlined manufacturing techniques for the benefit of the customer. Our radio production lines are the biggest in the world. Our quality controls the toughest. We make everything we need, down to the littlest capacitor of them all. National Panasonic products are the soundest buys you can make.



RE-7430B

3-Piece Component AM/FM Stereo Radio has advanced IC, FET circuitry. Speakers can hang on the wall or fit alongside the radio.

1-Band



R-70 or R-70S **1-Band (MW) 6-Transistor**

One of the finest portables. Sensitive ferrite core antenna. Unique carrying chain. 6 cm speaker. 250 mW output. Operates on one 006P (9V) battery. 110 mm diameter. Cabinet color: Red, blue, white, yellow or green R-70S operates on two "AA" batteries. 150 mW output. 410g without batteries.



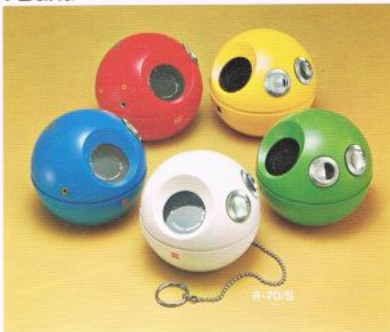
RC-705FB **2-Band (FM/MW) Digital Clock Radio** **With Detachable Design 9-Transistor**

Unique combination of digital clock and portable radio. Lulls you to sleep with up to 60 minutes of your favorite program and wakes you to music or buzzer alarm. Solid state circuits employing silicon transistor give sharp reception on both FM and MW bands. Radio is battery-operated when detached and hide away carrying handle provides ideal portability. Slide volume control for easy operation. Two step tone switch. 700 mW output. 9 cm speaker. 202(W) × 125(H) × 210(D) mm. 1.8 kg without batteries.

RC-7469B **2-Band (FM/MW) Digital Clock Radio** **9-Transistor**

Luxuriously finished in real wood, it lulls you to sleep as many as 60 minutes at night and wakes you bright and fresh in the morning. Precision digital time indication and independently illuminated FM and MW tuning dials for instant viewing. Exclusive "Sure-Awake" alarm system. Continuous tone control for the sound most pleasing to your taste. AFC on FM for drift-free reception. Big 1.8W output through 10 cm speaker. 322(W) × 102(H) × 101(D) mm. 2.6 kg.

1-Band



R-70 or R-70S **1-Band (MW) 6-Transistor**

One of the finest portables. Sensitive ferrite core antenna. Unique carrying chain. 6 cm speaker. 250 mW output. Operates on one 006P (9V) battery. 110 mm diameter. Cabinet color: Red, blue, white, yellow or green. R-70S operates on two "AA" batteries. 150 mW output. 410g without batteries.



RC-705FB **2-Band (FM/MW) Digital Clock Radio** **With Detachable Design 9-Transistor**

Unique combination of digital clock and portable radio. Lulls you to sleep with up to 60 minutes of your favorite program and wakes you to music or buzzer alarm. Solid state circuits employing silicon transistor give sharp reception on both FM and MW bands. Radio is battery-operated when detached and hide away carrying handle provides ideal portability. Slide volume control for easy operation. Two step tone switch. 700 mW output. 9 cm speaker. 202(W) x 125(H) x 210(D) mm. 1.8 kg without batteries.

RC-7469B **2-Band (FM/MW) Digital Clock Radio** **9-Transistor**

Luxuriously finished in real wood, it lulls you to sleep as many as 60 minutes at night and wakes you bright and fresh in the morning. Precision digital time indication and independently illuminated FM and MW tuning dials for instant viewing. Exclusive "Sure-Awake" alarm system. Continuous tone control for the sound most pleasing to your taste. AFC on FM for drift-free reception. Big 1.8W output through 10 cm speaker. 322(W) x 102(H) x 101(D) mm. 2.6 kg.



RC-1280B
MW Digital Clock Radio 6-Transistor

Deluxe MW digital clock radio with 24-hour fail-safe alarm. 60-minutes sleep timer. Set it and forget it. Independent volume control. Two-level night light. Rotary slide rule tuning. Built-in ferrite core antenna. 8 cm speaker. 250mW output. Jack for earphone/external speaker. Color: ivory with black. 308(W)×105(H)×140(D) mm. 1.7 kg.

RC-702B
2-Band (FM/MW) 11-Transistor
Digital Clock Radio

For reluctant risers' birdsong in the morning. Or radio. Fail-safe time set. Sleep timer gives up to 60 minutes of bedtime music. Turns itself off and on. Large, simple to read digits give AM/PM times. Illuminated clock face. Compact design nestles by your bedside. 500 mW output. Choice of black, white, yellow. Fitted with earphone jack and plug-in FM antenna jack. 267(W)×98(H)×162(D) mm. 1.6 kg.

RC-703LB IC
3-Band (FM/MW/LW) Digital Clock Radio
1-IC 7-Transistor

Attractive design with slim low lines. The full featured digital clock lulls you to sleep with up to 60 minutes of soothing music. In arising, it stirs your dreams either with a radio music or buzzer alarm. IC circuitry in the IF stage for top performance on all three bands. Illuminated tuning dial. Two step tone switch. 800 mW output through 9 cm speaker. Two step clock light button. 308(W)×112(H)×162(D)mm. Cabinet color: Black, Ivory white. 2.15kg.



R-1016
1-Band (MW) 6-Transistor

Only hand-high but rich in sound. All solid state circuit. 6cm speaker. 150 mW output. Operates on two "AA" batteries. Jack for external speaker/earphone. Red or black with silver trim. 67.5(W)×104(H)×33(D) mm. 287g without batteries.

R-1021
1-Band (MW) 6-Transistor

Compact, one-hand operation Cigarette lighter size. Built-in ferrite core antenna for distant stations. Needs only two penlight batteries. 6 cm speaker. 150 mW output. Jack for earphone/external speaker. Four modern color combinations. 64(W)×104(H)×31(D) mm. 180g without batteries.

R-1029
1-Band (MW) 6-Transistor

Pocket size. Giant performance. All solid state circuitry. Ferrite core antenna built-in for the long-distance stations. Operates on two "AA" batteries. 6 cm speaker. 150 mW output. Jack for earphone/external speaker. Five bright modern colors. 71(W)×115(H)×35(D) mm. 190g without batteries.



R-1037
1-Band (MW) 6-Transistor

Appealing horizontal design. Built in ferrite antenna. 6 cm speaker. 150mW output. Operates on two "AA" batteries. Jack for earphone/external speaker. Cabinet color: Black, red, blue. 112(W) × 69(H) × 33.7(D) mm. 210g without batteries.

R-1048
1-Band (MW) 7-Transistor

Hand-size unique design, one-hand operation. All solid state circuit. Two penlight batteries. 6 cm speaker. 150 mW output. Jack for earphone/external speaker. Black or red, with silver trim. 75(W) × 117(H) × 36(D) mm. 210g without batteries.

R-1058
1-Band (MW) 6-Transistor

Horizontal styling. Big clock tuning dial. Hand or pocket size. Big power from 4 "AA" batteries. All solid state circuit. Built-in ferrite core antenna. Better reception. Utmost reliability. 6.5 cm speaker. 250 mW output. Jack for earphone/external speaker. Black or red, with silver trim. 152(W) × 80(H) × 43(D) mm. 320g without batteries.

Clock 'n' Radio



RC-707B IC
2-Band (FM/MW) Digital Clock Radio with Day-Date Calendar 1-IC 12-Transistor

Unique FM/MW clock radio with day/date calendar. Large, easy-read digits. Sleep timer gives up to 60 minutes of bedtime music. Shuts off, turns on automatically. "Magic Touch" gives another 7 minutes sleep. IC for long-term performance. "Sure-Awake" alarm system. 10 cm speaker. 1.2W output. Earphone/external speaker jack. Black, antique white. 357(W) × 122(H) × 182(D) mm. 2.35 kg.

RE-6600B
2-Band (FM/MW) Digital Clock Radio with Built-in Cassette Tape Recorder 16-Transistor

Tops in convenience and performance. Clock, radio, cassette tape recorder all in one. Wakes you up with alarm, radio or pre-recorded tape. Digital clock gives up to 60 minutes of sleep music. Turns itself off and on. Built-in cassette player. Features auto-stop and automatic recording level. Special MPX out jack. Illuminated slide-rule tuning. Set and forget 24-hour timer. Earphone/ext. speaker jack. 366(W) × 129(H) × 253(D) mm. 4.5 kg.



R-1037
1-Band (MW) 6-Transistor

Appealing horizontal design. Built in ferrite antenna. 6 cm speaker. 150mW output. Operates on two "AA" batteries. Jack for earphone/external speaker. Cabinet color: Black, red, blue. 112(W) x 69(H) x 33.7(D) mm. 210g without batteries.

R-1048
1-Band (MW) 7-Transistor

Hand-size unique design, one-hand operation. All solid state circuit. Two penlight batteries. 6 cm speaker. 150 mW output. Jack for earphone/external speaker. Black or red, with silver trim. 75(W) x 117(H) x 36(D) mm. 210g without batteries.

R-1058
1-Band (MW) 6-Transistor

Horizontal styling. Big clock tuning dial. Hand or pocket size. Big power from 4 "AA" batteries. All solid state circuit. Built-in ferrite core antenna. Better reception. Utmost reliability. 6.5 cm speaker. 250 mW output. Jack for earphone/external speaker. Black or red, with silver trim. 152(W) x 80(H) x 43(D) mm. 320g without batteries.

Clock 'n' Radio



RC-707B IC
2-Band (FM/MW) Digital Clock Radio with Day-Date Calendar 1-IC 12-Transistor

Unique FM/MW clock radio with day/date calendar. Large, easy-read digits. Sleep timer gives up to 60 minutes of bedtime music. Shuts off, turns on automatically. "Magic Touch" gives another 7 minutes sleep. IC for long-term performance. "Sure-Awake" alarm system. 10 cm speaker. 1.2W output. Earphone/external speaker jack. Black, antique white. 357(W) x 122(H) x 182(D) mm. 2.35 kg.

RE-6600B
2-Band (FM/MW) Digital Clock Radio with Built-in Cassette Tape Recorder 16-Transistor

Tops in convenience and performance. Clock, radio, cassette tape recorder all in one. Wakes you up with alarm, radio or pre-recorded tape. Digital clock gives up to 60 minutes of sleep music. Turns itself off and on. Built-in cassette player. Features auto-stop and automatic recording level. Special MPX out jack. Illuminated slide-rule tuning. Set and forget 24-hour timer. Earphone/ext. speaker jack. 366(W) x 129(H) x 253(D) mm. 4.5 kg.



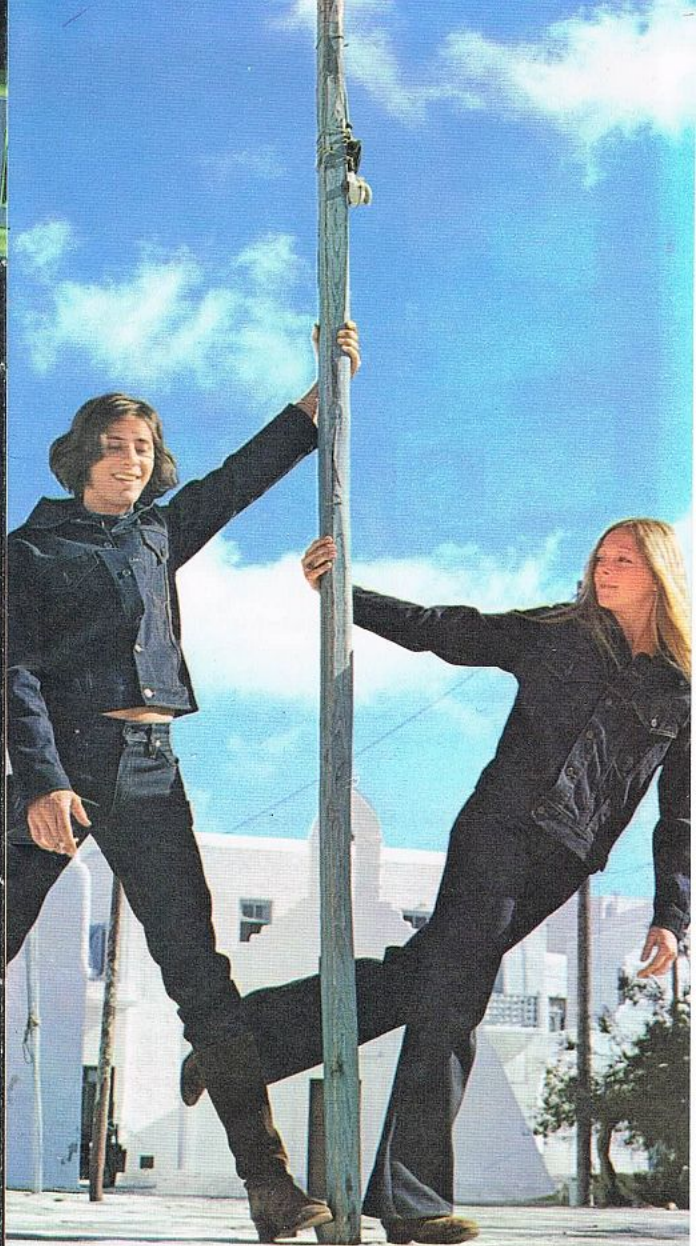
Radio calender has big digits showing time, day and date.



The world's first talking clock radio. Press the disc and it tells the time.



Digital time-piece and detachable FM/MW radio.



2-Band



R-206H or J 2-Band (MW/SW) 7-Transistor

Clean lines, precision engineering. All silicon transistors. Telescopic whip antenna for SW tuning. Vernier tuning dial. Three "AA" batteries 6.5 cm speaker. 300 mW output. Jack for earphone/external speaker. Black, light blue or red with silver trim. 166(W) × 92(H) × 42(D) mm. 620g without batteries.

R-211H or J 2-Band (MW/SW) 8-Transistor

Excellent, compact design in black/silver. Clear rich tone. 350 mW output. 6.5 cm speaker. Operates on four "AA" batteries. Jack for earphone/ext. speaker. Cabinet color: Black, red. 164(W) × 90(H) × 43(D) mm. 350g without batteries.

R-220H or J 2-Band (MW/SW) 8-Transistor

The clean metallic portable. Roller-bar tuning. Tone control. 350mW output. 6.5 cm speaker. Operates on four "AA" batteries. Jack for earphone/ext. speaker, ext. power. Cabinet color: Black, blue. 164(W) × 106(H) × 42(D) mm. 450g without batteries.



for real convenience plus a battery checker and modulation level indicator. Jack for earphone, microphone and an AC adaptor. Operates on eight "AA" batteries. 85(W) × 254(H) × 43(D) mm. 830g without batteries.

RJ-27 11-Transistor

A powerful long range transceiver in a waterproof case. A must for the safety-conscious outdoors man. Crystal clear communication incorporating a ceramic filter for remarkable selectivity. Squelch control and noise limiter included. Rugged handy design in stylish black/silver. Jack for earphone, external speaker, external power. Operates on eight "AA" batteries. 80(W) × 237(H) × 41(D) mm. 600g without batteries.

2-Band



R-206H or J **2-Band (MW/SW) 7-Transistor**

Clean lines, precision engineering. All silicon transistors. Telescopic whip antenna for SW tuning. Vernier tuning dial. Three "AA" batteries. 6.5 cm speaker. 300 mW output. Jack for earphone/external speaker. Black, light blue or red with silver trim. 166(W) x 92(H) x 42(D) mm. 620g without batteries.

R-211H or J **2-Band (MW/SW) 8-Transistor**

Excellent, compact design in black/silver. Clear rich tone. 350 mW output. 6.5 cm speaker. Operates on four "AA" batteries. Jack for earphone/ext. speaker. Cabinet color: Black, red. 164(W) x 90(H) x 43(D) mm. 350g without batteries.

R-220H or J **2-Band (MW/SW) 8-Transistor**

The clean metallic portable. Roller-bar tuning. Tone control. 350mW output. 6.5 cm speaker. Operates on four "AA" batteries. Jack for earphone/ext. speaker, ext. power. Cabinet color: Black, blue. 164(W) x 106(H) x 42(D) mm. 450g without batteries.



for real convenience plus a battery checker and modulation level indicator. Jack for earphone, microphone and an AC adaptor. Operates on eight "AA" batteries. 85(W) x 254(H) x 43(D) mm. 830g without batteries.

RJ-27 **11-Transistor**

A powerful long range transceiver in a waterproof case. A must for the safety-conscious outdoors man. Crystal clear communication incorporating a ceramic filter for remarkable selectivity. Squish control and noise limiter included. Rugged handy design in stylish black/silver. Jack for earphone, external speaker, external power. Operates on eight "AA" batteries. 80(W) x 237(H) x 41(D) mm. 600g without batteries.

Transceiver



RJ-8 6-Transistor

Compact size, simple operation and lightweight portability make this the ideal short range transceiver. The advantage of instant contact are yours with ultra smart design that is both placement and functional. Long lasting reliability and rugged performance are assured. Jacks for earphone/external speaker. Operates on four "AA" batteries. 61(W) × 176(H) × 40(D) mm. 335g without batteries.

RJ-20 11-Transistor

A robustly designed long range transceiver. High selectivity is achieved with a mechanical filter and a variable squelch control effectively maintains receiver silence between calls. Cartridge type battery case



R-222H or J 2-Band (MW/SW) 8-Transistor

Combination of elegance with portability. Volume indicator. 2-step tone control. 500 mW output. 6.5cm speaker. Operates on three "C" batteries. Jack for earphone/ext. speaker, ext. antenna, ext. power. 184(W) × 116(H) × 51(D) mm. 720g without batteries.

R-237H or J 2-Band (MW/SW) 10-Transistor

Flash tuning indicator. 2-step tone switch. 500 mW output. 8 cm speaker. Operates on Three "D" batteries. Dial light. Jack for earphone/ext. speaker, ext. power. 203(W) × 131(H) × 43(D) mm. 800g without batteries.

R-247HB or JB 2-Band (MW/SW) 8-Transistor AC/Battery Operation



AC/Battery versatility. All silicon transistor circuit. Built-in ferrite core antenna plus telescopic antenna for highly sensitive reception. Three "D" batteries or AC. 9 cm speaker. 700 mW output. 2-step tone control. Slide rule tuning. Jack for earphone/external speaker. 230(W) × 144(H) × 71(D) mm. 1.25 kg without batteries.

3-Band



R-322

R-312

R-306

R-306

3-Band (MW/SW₁/SW₂) 8-Transistor

Unique roller-type controls for tuning and band selection. 400 mW output. 6.5 cm speaker. Operates on three "D" batteries. Jack for earphone/ext. speaker, ext. antenna. 214(W) × 123(H) × 48(D) mm. 800g without batteries.

R-312

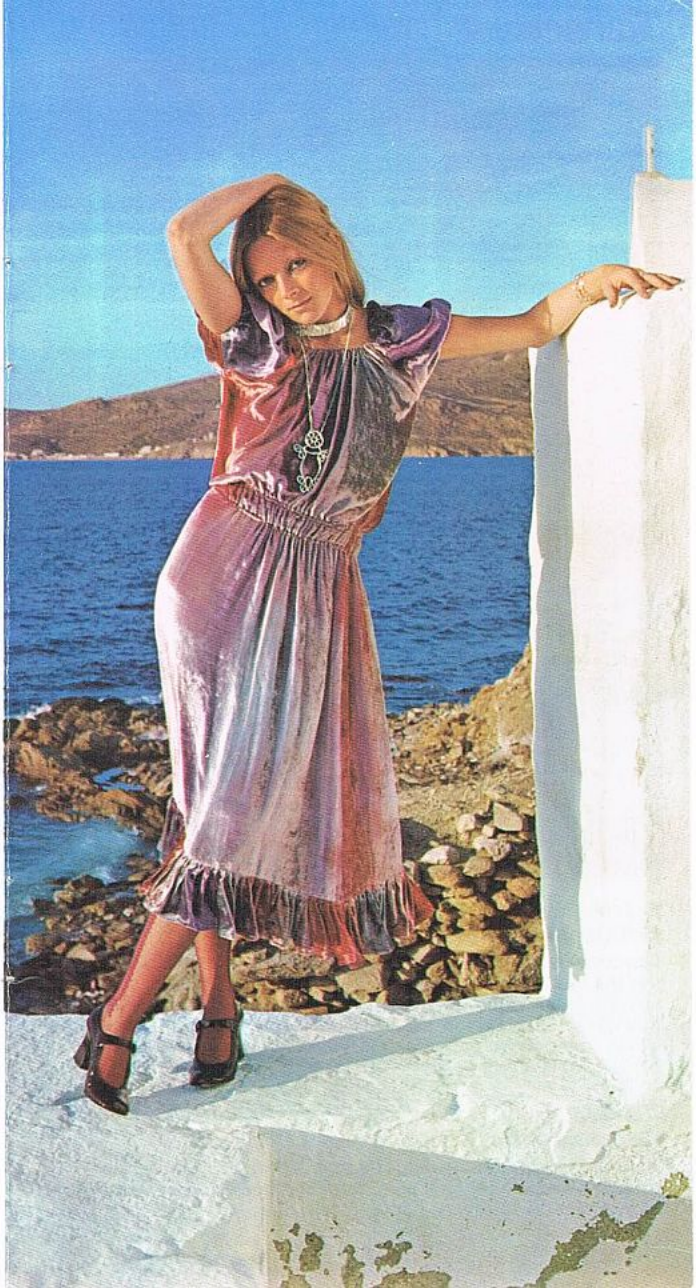
3-Band (MW/SW₁/SW₂) 8-Transistor

Finest compact portable of its kind. Fine tuning for sharp SW reception. Volume indicator. Roll bar tuning dial. 500 mW output. 9 cm speaker. Operates on three "D" batteries. Jack for earphone/ext. speaker, ext. antenna. 230(W) × 138(H) × 54(D) mm. 900g without batteries.

R-322 2-Speaker System

3-Band (MW/SW₁/SW₂) 8-Transistor

Two 9 cm speakers. Circular indicators for volume and fine tuning. 700 mW output and 2-step tone control. Easy carry handle. Operates on three "D" batteries. Jack for earphone/ext. speaker, ext. power, antenna. 258(W) × 129(H) × 63(D) mm. 900g without batteries.



3-Band



R-306 3-Band (MW/SW₁/SW₂) 8-Transistor

Unique roller-type controls for tuning and band selection. 400 mW output. 6.5 cm speaker. Operates on three "D" batteries. Jack for earphone/ext. speaker, ext. antenna. 214(W) × 123(H) × 48(D) mm. 800g without batteries.

R-312 3-Band (MW/SW₁/SW₂) 8-Transistor

Finest compact portable of its kind. Fine tuning for sharp SW reception. Volume indicator. Roll bar tuning dial. 500 mW output. 9 cm speaker. Operates on three "D" batteries. Jack for earphone/ext. speaker, ext. antenna. 230(W) × 138(H) × 54(D) mm. 900g without batteries.

R-322 2-Speaker System 3-Band (MW/SW₁/SW₂) 8-Transistor

Two 9 cm speakers. Circular indicators for volume and fine tuning. 700 mW output and 2-step tone control. Easy carry handle. Operates on three "D" batteries. Jack for earphone/ext. speaker, ext. power, antenna. 258(W) × 129(H) × 63(D) mm. 900g without batteries.





RF-7490B

RF-7270

RF-7270
2-Band (FM/MW) 17-Transistor
Portable/Car Radio with Cassette
Tape Recorder

Super quality portable that turns into a car radio with the installation of a simple dashboard bracket. Snap in a cassette tape for fine music or record straight off the radio to build your own tape collection. 15 cm x 10 cm oval speaker. 1.5W output as a portable, 2W as a car radio. Operates on five "D" batteries as portable or 6V, 12V car battery as car radio. Jack for earphone/ext. speaker, Mic-remote, Aux-rec, external and car multiterminal. 271 (W) x 256 (H) x 86 (D) mm. 3.6 kg without batteries.

RF-7490B 
2-Band (FM/AM) Portable Radio with Stereo
Cassette Tape Recorder
33-Transistor AC/Battery Operation

Unique twin-case fold-together styling. AC/battery operation. Sensitive AM and FM antennas. Separate FM and AM tuning dial and AFC on FM for drift-free reception. Continuous tone and balance control. Two 6" x 4" (15 x 10 cm) oval PM dynamic speakers. Tri-purpose meter for signal strength, stereo/mono indicator or battery drain indicator. Built-in stereo cassette tape recorder. Push-button controls and easy-change cassette pop-up system. Hide-away carrying handle. Operate on AC or Six "D" batteries. Main 343 (W) x 318 (H) x 124 (D) mm. Speaker 160 x 100 mm. 8kg without batteries.



R-346B

R-331B

R-331B 
3-Band (MW/SW₁/SW₂) 8-Transistor
AC/Battery Operation

Modern leatherette covered portable. All solid state circuit. Built-in ferrite core antenna, plus telescopic antenna. Gold-brushed front panel. Three "D" batteries. 10 cm speaker. 700mW output. 2-step tone control. Slide rule tuning. Jack for earphone/external speaker. 235 (W) x 153 (H) x 76 (D) mm. 1.45 kg without batteries.

R-346B 
3-Band (MW/SW₁/SW₂) 8-Transistor
AC/Battery Operation

Convenient AC/battery operation. Two-step tone switch, fine tuning. Carrying handle. 700 mW output. 10 cm speaker. Operates on AC or three "D" batteries. Jack for earphone/ext. speaker, ext. antenna. 246 (W) x 160 (H) x 77 (D) mm. 1.5 kg without batteries.

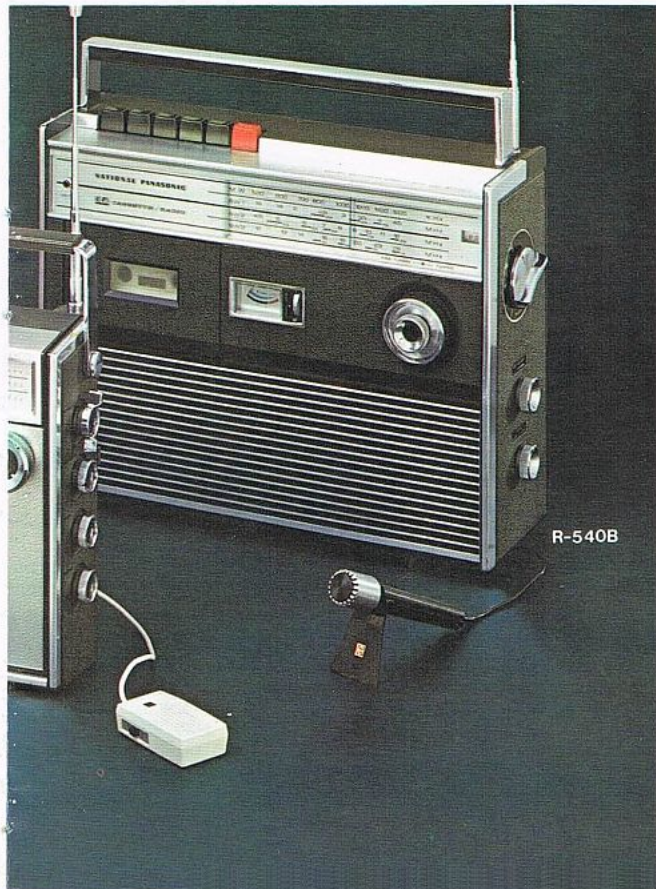


**R-357D 2-Speaker System
3-Band (MW/SW₁/SW₂) 12-Transistor**

Deluxe two 9 cm speaker portable radio. Linear scale indicator for volume and fine tuning. 2-purpose magic meter, two step tone switch 700 mW output. Operates on three "D" batteries. Jack for earphone /ext. speaker, ext. antenna. earth. 259(W) × 141(H) × 58(D) mm. 1.2 kg without batteries.

**R-399
3-Band (MW/SW₁/SW₂) 12-Transistor**

Tuned RF stage. Slide controls for volume and tone. Signal strength meter and battery check. 700 mW output through 10 cm speaker. Operates on three "D" batteries. Jack for earphone/ext. speaker, ext. antenna, earth. 250(W) × 149(H) × 62(D) mm. 1.2 kg without batteries.



action. Magic meter for recording level, radio signal strength and battery check. Fine tuning for positive band spread on short wave. 12 cm dynamic speaker and powerful 2W output. Continuous tone control. Operates on AC or six "D" batteries. Jack for earphone/ext. speaker, mic, aux., ext. antenna and earth. 334(W) × 256(H) × 110 (D) mm. 5.1 kg without batteries.

**R-530B/RF-530JB
R-530B (MW/SW₁/SW₂) 13-Transistor
RF-530JB (FM/MW/SW) 17-Transistor**



Exclusive OTL and AOC circuits. Push button action for easy operation. 3-way magic meter for recording level, radio signal level and battery check. Big 12 cm speaker and rich 1.8W output. Continuous tone control. Operates on AC or six "D" batteries. 287(W) × 218(H) × 91.5(D) mm. 3.4 kg without batteries.



R-357D

R-399

**R-357D 2-Speaker System
3-Band (MW/SW₁/SW₂) 12-Transistor**

Deluxe two 9 cm speaker portable radio. Linear scale indicator for volume and fine tuning, 2-purpose magic meter, two step tone switch 700 mW output. Operates on three "D" batteries. Jack for earphone/ext. speaker, ext. antenna, earth, 259(W) × 141(H) × 58(D) mm, 1.2 kg without batteries.

**R-399
3-Band (MW/SW₁/SW₂) 12-Transistor**

Tuned RF stage. Slide controls for volume and tone. Signal strength meter and battery check. 700 mW output through 10 cm speaker. Operates on three "D" batteries. Jack for earphone/ext. speaker, ext. antenna, earth, 250(W) × 149(H) × 62(D) mm, 1.2 kg without batteries.



R-540B

action. Magic meter for recording level, radio signal strength and battery check. Fine tuning for positive band spread on short wave, 12 cm dynamic speaker and powerful 2W output. Continuous tone control. Operates on AC or six "D" batteries. Jack for earphone/ext. speaker, mic, aux., ext. antenna and earth. 334(W) × 256(H) × 110(D) mm, 5.1 kg without batteries.

**R-530B, RF-530JB
R-530B (MW/SW₁/SW₂) 13-Transistor
RF-530JB (FM/MW/SW) 17-Transistor**



Exclusive OTL and AOC circuits. Push button action for easy operation, 3-way magic meter for recording level, radio signal level and battery check. Big 12 cm speaker and rich 1.8W output. Continuous tone control. Operates on AC or six "D" batteries. 287(W) × 218(H) × 91.5(D) mm, 3.4 kg without batteries.

Radio/Cassette

R-530B/RF-530JB



R-520B/RF-520JB

R-520B/RF-520JB

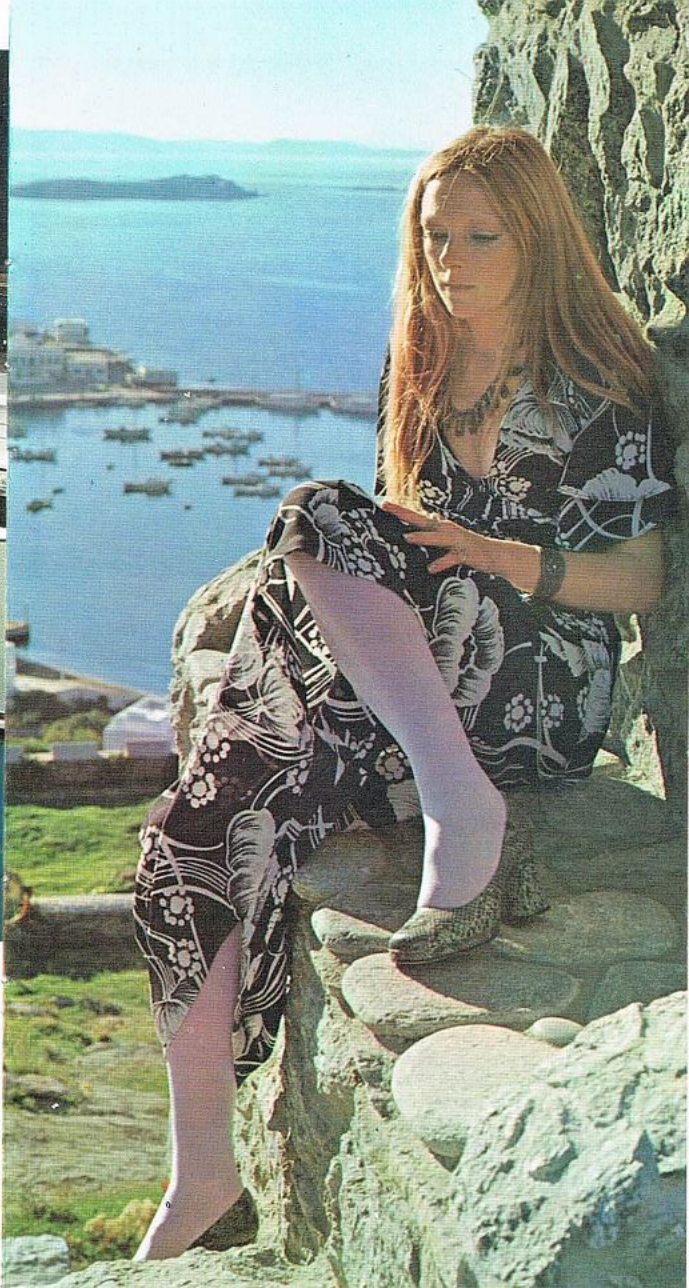
R-520B (MW/SW₁/SW₂) 10-Transistor  
RF-520JB (FM/MW/SW) 15-Transistor

Convenient AC/Battery operation. Cassette tape recorder radio. Record from radio or live through built-in condenser mic. Cassette has auto-stop and automatic recording level. Meter also checks battery. Continuous tone control. Sound monitor. Four "D" batteries 1W output. 283(W) × 186(H) × 77(D) mm. 2.8kg without batteries. Gray, yellow.

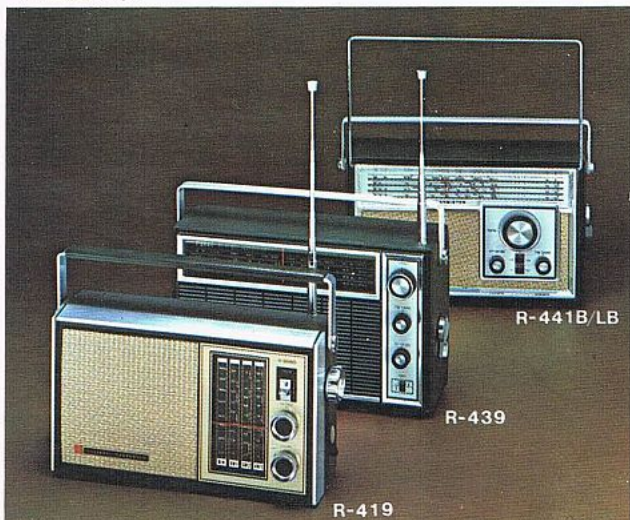
R-540B

4-Band (MW/SW₁/SW₂/SW₃)  
17-Transistor AC/Battery Operation

A superfine AC/battery operated 4-band radio and cassette tape recorder, an all-in-one quality portable. Superior solid state circuits for trouble free performance at any time. Push buttons cassette



4-Band



R-419 **4-Band (MW/SW₁/SW₂/SW₃) 8-Transistor**

Solid state circuit gives selectivity and reliability. Built-in ferrite core antenna and telescopic whip antenna. Efficient 10 cm speaker. 1W output. Ultra-fine tuning control. 2-step tone control. Four "D" batteries. Jack for earphone/external speaker. 260(W) × 157(H) × 60(D) mm. 1.5 kg without batteries.

R-439 **4-Band (MW/SW₁/SW₂/SW₃) 8-Transistor**

OTL circuit for superb selectivity on all 4 bands. 2-step tone switch. Fine tuning control. 1W output. 10 cm speaker. Operates on four "D" batteries. Jack for earphone/ext. speaker, ext. power, recorder player, ext. antenna, earth. 270(W) × 164(H) × 80(D) mm. 1.5 kg without batteries.

R-441B/LB **4-Band (MW/SW₁/SW₂/SW₃) 8-Transistor** **AC/Battery Operation**

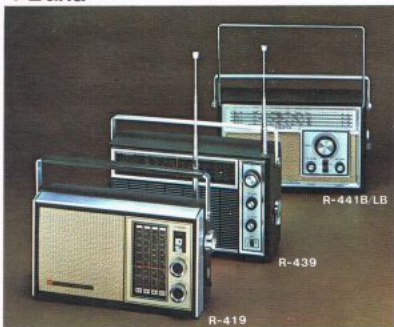
AC/battery operation. Rich leatherette cabinet. 2-step tone switch and fine tuning control. 1W output. 10 cm speaker. Operates on AC or four "D" batteries. Jacks for earphone/ext. speaker, ext. antenna, earth, record player. 296(W) × 186(H) × 99.5(D) mm. 2.1 kg without batteries. (R-441LB LW/MW/SW₁/SW₂)



R-5050B **3-Band (MW/SW₁/SW₂) 17-Transistor** **Radio/Stereo Cassette AC/Battery Operation**

Advanced electronics and superb modern design. Pop-up cassette. Meter for tuning and recording level. Built-in ferrite core antenna. Whip antenna for SW. Two 15 cm × 10 cm speakers. Continuous tone control. Separate bass and treble control. Fine tuning. Six "D" batteries. 4W output. Special output jack for hooking up to home component system. 424(W) × 296(H) × 146(D) mm. 9.5 kg without batteries.

4-Band



R-419
4-Band (MW/SW₁/SW₂/SW₃) 8-Transistor

Solid state circuit gives selectivity and reliability. Built-in ferrite core antenna and telescopic whip antenna. Efficient 10 cm speaker, 1W output. Ultra-fine tuning control. 2-step tone control. Four "D" batteries. Jack for earphone/external speaker. 260(W) × 157(H) × 10(D) mm. 1.5 kg without batteries.

R-439
4-Band (MW/SW₁/SW₂/SW₃) 8-Transistor

OTL circuit for superb selectivity on all 4 bands. 2-step tone switch. Fine tuning control. 1W output. 10 cm speaker. Operates on four "D" batteries. Jack for earphone/ext. speaker, ext. power, record player, ext. antenna, earth. 270(W) × 164(H) × 80(D) mm. 1.5 kg without batteries.

R-441B/LB 
4-Band (MW/SW₁/SW₂/SW₃) 8-Transistor
AC/Battery Operation

AC/battery operation. Rich leatherette cabinet. 2-step tone switch and fine tuning control. 1W output. 10 cm speaker. Operates on AC or four "D" batteries. Jacks for earphone/ext. speaker, ext. antenna, earth, record player. 296(W) × 186(H) × 99.5(D) mm. 2.1 kg without batteries. (R-441LB LW/MW/SW₁/SW₂.)



R-5050B 
3-Band (MW/SW₁/SW₂) 17-Transistor
Radio/Stereo Cassette AC/Battery Operation

Advanced electronics and superb modern design. Pop-up cassette. Meter for tuning and recording level. Built-in ferrite core antenna. Whip antenna for SW. Two 15 cm × 10 cm speakers. Continuous tone control. Separate bass and treble control. Fine tuning. Six "D" batteries. 4W output. Special output jack for hooking up to home component system. 424(W) × 296(H) × 146(D) mm. 9.5 kg without batteries.

National Panasonic make all kinds of electronic combinations. Tape recorders that are also radios. Radios that are tape recorders. Some include record players. And calendars. And alarm clocks. There's even a birdsong alarm. And the smallest TV. We make these products in quantity at our many and varied factories (some have the biggest production lines in the world) at the lowest cost to our customers. And our quality controls are the toughest in the business. Remember that when you buy National Panasonic.



3-Band portable stereo cassette radio has many advanced electronic and styling features.

Condenser microphone is built-in; has wide, long dynamic range.

Pop-up cassette system is a standard feature.



R-1400

R-551B

R-531B

R-531B 
5-Band (MW/SW₁/SW₂/SW₃/SW₄)
8-Transistor AC/Battery Operation

Covers complete range from 525 kHz to 30 MHz. All silicon transistor circuitry. Ceramic filter stabilizes reception. 10 cm speaker and big 1.5 W power. 2-step tone control. Fine tuning. Six "D" batteries or AC. Jacks for earphone/external speaker, phono, AM antenna. 294 (W) × 195(H) × 100(D) mm. 2.2 kg without batteries.

R-551B 
5-Band (MW/SW₁/SW₂/SW₃/SW₄)
10-Transistor AC/Battery Operation

Luxury 5-band portable covering complete range from 525 kHz to 30 MHz. All silicon transistor circuitry. Ceramic filter for stable reception, better selectivity. 10 cm PM dynamic speaker and big 1.5W power. 2-step tone control and fine tuning. Special feature is flash-light tuning indicator for pinpointing station. Six "D" batteries or AC. Jack for earphone/external speaker. 294(W) × 195(H) × 100(D) mm. 2.3 kg without batteries.

R-1400
4-Band (MW/SW₁/SW₂/SW₃) 11-Transistor

Tuned RF stage for exceptional sensitivity. Continuous tone control. Magic meter for tuning and battery check. Band indicator. Fine tuning control. 1.8W output. 12 cm speaker. Dial light. Operates on four "D" batteries. Jack for earphone/ext. speaker, record player, ext. antenna, earth, ext. power, recording. 293(W) × 207(H) × 95(D) mm. 2.72 kg without batteries.



RF-640

RF-511

RF-823H/J

RF-511
2-Band (FM/MW) 9-Transistor

Colorful and compact. Hangs from wrist, or fits into hand. One-hand operation. Antennas built-in. All solid state circuit. Vernier tuning. One 006P battery. 250 mW output. Earphone/external speaker jack. Black with silver, orange with silver. 80(W) × 119(H) × 43(D) mm. 290g without batteries.

RF-640 IC
2-Band (FM/MW) 7-Transistor

Hybrid IC for constant rich sound. Silicon transistors for ultra-sensitive reception. ITL-OTL eliminates noise and distortion. 2-step tone control. Slide rule tuning. 400 mW output from four "AA" batteries. Jacks for earphone/external speaker, and external power. Black or red, with silver trim. 174(W) × 101(H) × 47(D) mm. 590g without batteries.

RF-823 H or J
3-Band (FM/MW/SW) 9-Transistor

Slim line portable. Unique lever-type continuous tone control. 500 mW output and 6.5 cm speaker. Operates on three "C" batteries. Jack for earphone/ext. speaker. 214(W) × 123.5(H) × 50.5 mm. 700g without batteries.



R-100/RF-100Y/L

RF-5000

RF-5000
11-Band (FM/LW/MW/SW₁-SW₈)
19-Transistor

This is the Leader in the world of radio portables, a totally new concept in radio listening. Precision engineering makes it the most sensitive ever produced. The entire broadcasting world is covered by the 11 Band range of this receiver, including the specialised frequencies that employ Morse code and SSB reception. The best design talent created the cabinet, a blend of elegance and functionality. And that's not all. With two big (7" × 5" and 5") speakers and 2W power output you get big Hi-Fi sound, on all bands. Push button band change with an ultra sensitive Tuning Control together with a Fine Tuner ensure precise easy tuning. A separate tuning system for FM/AM and AFC for no-drift reception on FM. And three separate aeri-als-a Frame aerial and 2 whip types. Operates on six "D" batteries or optional AC adaptor, (Model RC-9450) 424(W) × 296(H) × 146(D) mm. 9.5 kg without batteries.

R-100/RF-100Y or L
R-100 4-Band (MW/SW₁-SW₃)
9-Transistor

RF-100Y/L 4-Band (FM/MW/SW₁/SW₂ or LW) 12-Transistor

Big performance on all four bands. Independent bass and treble control. 2-speaker system (12 cm and 9 cm) and big 2W output. Fine tuning. Magic meter for tuning and battery check. Operates on six "D" batteries or optional AC adaptor (Model RD-9430D). Jack for earphone/ext. speaker, ext. antenna, record player. 334(W) × 221(H) × 129(D) mm. 4.15kg without batteries.



RF-640

RF-511

RF-823H/J

RF-511
2-Band (FM/MW) 9-Transistor

Colorful and compact. Hangs from wrist, or fits into hand. One-hand operation. Antennas built-in. All solid state circuit. Vernier tuning. One 006P battery. 250 mW output. Earphone/external speaker jack. Black with silver, orange with silver. 80(W) x 119(H) x 43(D) mm. 290g without batteries.

RF-640 IC
2-Band (FM/MW) 7-Transistor

Hybrid IC for constant rich sound. Silicon transistors for ultra-sensitive reception. I.T.L.-O.T.L. eliminates noise and distortion. 2-step tone control. Slide rule tuning. 400 mW output from four "AA" batteries. Jacks for earphone/external speaker, and external power. Black or red, with silver trim. 174(W) x 101(H) x 47(D) mm. 590g without batteries.

RF-823 H or J
3-Band (FM/MW/SW) 9-Transistor

Slim line portable. Unique lever-type continuous tone control. 500 mW output and 6.5 cm speaker. Operates on three "C" batteries. Jack for earphone/ext. speaker. 214(W) x 123.5(H) x 60.5 mm. 700g without batteries.



R-100/RF-100Y/L

RF-5000

RF-5000
11-Band (FM/LW/MW/SW₁-SW₃)
19-Transistor

This is the Leader in the world of radio portables, a totally new concept in radio listening. Precision engineering makes it the most sensitive ever produced. The entire broadcasting world is covered by the 11 Band range of this receiver, including the specialised frequencies that employ Morse code and SSB reception. The best design talent created the cabinet, a blend of elegance and functionality. And that's not all. With two big (7" x 5" and 5" x 5") speakers and 2W power output you get big Hi-Fi sound, on all bands. Push button band change with an ultra sensitive Tuning Control together with a Fine Tuner ensure precise easy tuning. A separate tuning system for FM/AM and AFC for no-drift reception on FM. And three separate aerials - a Frame aerial and 2 whip types. Operates on six "D" batteries or optional AC adaptor. (Model RC-9450) 424(W) x 296(H) x 146(D) mm. 9.5 kg without batteries.

R-100/RF-100Y or L
R-100 4-Band (MW/SW₁-SW₃)
9-Transistor
RF-100Y/L 4-Band (FM/MW/SW₁/SW₂
or LW) 12-Transistor

Big performance on all four bands. Independent bass and treble control. 2-speaker system (12 cm and 9 cm) and big 2W output. Fine tuning. Magic meter for tuning and battery check. Operates on six "D" batteries or optional AC adaptor (Model RD-9430D). Jack for earphone/ext. speaker, ext. antenna, record player. 334(W) x 221(H) x 129(D) mm. 4.15kg without batteries.

Multi-Band



R-2500B/RF-2500B

R-2500B 5-Band (MW/SW₁-SW₄)

11-Transistor

RF-2500B 5-Band (FM/LW/MW/SW₁/SW₂)

11-Transistor 1-IC AC/Battery Operation

Latest electronics: efficient silicon transistors and tuned RF stage using FET. High performance IF stage with IC (RF-2500B). OTL circuit for the best in sensitivity, reliability. Large tuning meter. Twin speakers, 12 cm and 9 cm. 2W output. Dial light. Individual tone controls. Built-in antennas. Jacks for earphone/external speaker. Multiplex out, Rec. out/Phono. 336(W) × 220(H) × 112(D) mm. 4.7 kg without batteries.

R-3000/RF-3000 IC

R-3000 6-Band (MW/LW/SW₁-SW₄)

12-Transistor

RF-3000 6-Band (FM/MW/SW₁/SW₂/MB/LW)

19-Transistor

World-wide, super quality portable radio. Exclusive, Roto-Dial system for really accurate station tuning. Gives the finest sensitivity. Separate bass and treble tone level indicators. Magic meter for tuning condition and battery check, 2-speaker system (12 cm and 10 cm) and rich 2W output. Operates on six "D" batteries or optional AC adaptor (Model RD-9430D). Jack for earphone/ext. speaker, ext. antenna, recording, record player, 370(W) × 254(H) × 192(D) mm. 5 kg without batteries.

R-3000/RF-3000

R-2500B/RF-2500B



RF-650B

2-Band (FM/MW) 1-IC 7-Transistor
AC/Battery Operation

Monolithic IC in the IF stage gives reliable performance on both FM and MW reception. 2-step tone switch and volume indicator. 500 mW output and 8cm speaker. Operates on AC or four "AA" batteries. Jack for earphone/ext. speaker, MPX out. 185(W) × 107(H) × 54 (D) mm. 900g without batteries.

RF-858HB

3-Band (FM/MW/SW) 8-Transistor, 1-IC
AC/Battery Operation

Super quality portable with FET in RF stage. IC and ceramic filter in IF stage for increased reliability. FM locks with AFC. Sliding controls. Meter serves as VU, battery check, tuning meter. Loudness control. 10 cm UF cone speaker. Three "C" batteries. 1.6W output. Jacks for earphone/external speaker, phono, multiplex out, stereo/record out. 60 minute sleep timer attachable. 212(W) × 132(H) × 55(D) mm. 1.05 kg without batteries.

RF-710LB or EB

3-Band (FM/MW/LW or SW) 9-Transistor
AC/Battery Operation

Real portable radio. Advanced circuit for superb sensitivity and selectivity. Carrying handle plus convenient AC/battery operation for complete portability indoors or out. AFC on FM for drift-free reception. Vertical slide rule tuning for easy station tuning. Two step tone switch. 500 mW output, 10 cm white cone speaker. Operates on AC or three "C" batteries. 200(W) × 162(H) × 64(D) mm. 1.5 kg without batteries.

RF-710LB/EB

RF-858HB

RF-650B

Portable/Car Radio



RF-959LB   **IC**
4-Band (FM/MW/LW/SW) 8-Transistor 1-IC
AC/Battery Operation

Smart clean lines house latest electronics. IC in IF stage. OTL for less noise and distortion, matched with 12 cm speaker. 1.5W output. AFC on FM locks station. Continuous tone control. Fine tuning. Loudness switch for rich sound at low level. Illuminated, easy-read dial. Four "C" batteries or AC. Jacks for earphone/external speaker, multiplex out, phono & record DIN. 260(W) × 170(H) × 78(D) mm. 2.23 kg without batteries.

RF-939LB  
4-Band (FM/MW/LW/SW) 10-Transistor
AC/Battery Operation

Attractively styled, precision engineered. FET gives cleaner reception. Silicon transistors, ferrite core antenna built-in. AFC on FM stops station drift. Controls designed for easy one-hand operation. 2-step tone switch. Dial light. Great 1.5W output. Three "C" batteries. Jack for earphone/external speaker, DIN for phono, record. 260(W) × 157(H) × 80(D) mm. 2 kg without batteries.

RF-969LB  
4-Band (FM/LW/SW/MW) 11-Transistor
AC/Battery Operation

Preset tuning on three FM stations with push button for quick, easy operation. Bold 2W output and 12 cm speaker. Slide control for volume and tone. Band indicator and dial light. The crisp clean lines, exquisite wood grain cabinet. Operates on AC or six "D" batteries. Jack for Din socket, earphone/ext. speaker, earth, antenna. 284(W) × 174(H) × 90(D) mm. 2.7 kg without batteries.



RF-905
FM Preset Tuning Portable/Car Radio
5-Band (FM/LW/MW/SW₁/SW₂) 15-Transistor

Richly designed portable/car radio. Preset tuning on three FM stations. AFC/AGC circuit. Slide controls. 3W as portable. 6W as a car radio. 16 cm Hi-Fi speaker. Operates on five "D" batteries. Optional car bracket RD-905CA. Jack for earphone/ext. speaker ext. power, record player, recording. 316(W) × 192(H) × 100(D) mm. 3.85 kg without batteries.

RF-980L
Radar Matic Portable/Car Radio
4-Band (FM/LW/MW/SW) 18-Transistor

Radar Matic's electrically controlled tuning system. AFC on FM. 2W as portable 2.5W as car radio, 12 cm speaker. Operates on four "D" batteries. Optional car bracket RD-880LC. Jack for earphones/ext. speaker, remote control, MPX out, stereo in. 266(W) × 184(H) × 86(D) mm. 2.6 kg without batteries.



RF-959LB  **IC**
4-Band (FM/MW/LW/SW) 8-Transistor 1-IC
AC/Battery Operation

Smart clean lines house latest electronics. IC in IF stage. OTL for less noise and distortion, matched with 12 cm speaker. 1.5W output. AFC on FM locks station. Continuous tone control. Fine tuning. Loudness switch for rich sound at low level. Illuminated, easy-read dial. Four "C" batteries or AC. Jacks for earphone/external speaker, multiplex out, phono & record DIN. 260(W) x 170(H) x 78(D) mm. 2.23 kg without batteries.

RF-939LB  **IC**
4-Band (FM/MW/LW/SW) 10-Transistor
AC/Battery Operation

Attractively styled, precision engineered. FET gives cleaner reception. Silicon transistors, ferrite core antenna built-in. AFC on FM stops station drift. Controls designed for easy one-hand operation. 2-step tone switch. Dial light. Great 1.5W output. Three "C" batteries. Jack for earphone/external speaker, DIN for phono, record. 260(W) x 157(H) x 80(D) mm. 2 kg without batteries.

RF-969LB  **IC**
4-Band (FM/LW/SW/MW) 11-Transistor
AC/Battery Operation

Preset tuning on three FM stations with push button for quick, easy operation. Bold 2W output and 12 cm speaker. Slide control for volume and tone. Band indicator and dial light. The crisp clean lines, exquisite wood grain cabinet. Operates on AC or six "D" batteries. Jack for Din socket, earphone/ext. speaker, earth, antenna. 284(W) x 174(H) x 90(D) mm. 2.7 kg without batteries.



RF-905
FM Preset Tuning Portable/Car Radio
5-Band (FM/LW/MW/SW₁/SW₂) 15-Transistor

Richly designed portable/car radio. Preset tuning on three FM stations. AFC/AGC circuit. Slide controls. 3W as portable. 6W as a car radio. 16 cm Hi-Fi speaker. Operates on five "D" batteries. Optional car bracket RD-905CA. Jack for earphone/ext. speaker ext. power, record player, recording. 316(W) x 192(H) x 100(D) mm. 3.85 kg without batteries.

RF-980L
Radar Matic Portable/Car Radio
4-Band (FM/LW/MW/SW) 18-Transistor

Radar Matic's electrically controlled tuning system. AFC on FM. 2W as portable 2.5W as car radio, 12 cm speaker. Operates on four "D" batteries. Optional car bracket RD-880LC. Jack for earphones/ext. speaker, remote control, MPX out, stereo in. 266(W) x 184(H) x 86(D) mm. 2.6 kg without batteries.

Multi-Band



R-2500B/RF-2500B

R-3000/RF-3000

R-2500B/RF-2500B

R-2500B 5-Band (MW/SW₁-SW₄)

11-Transistor

RF-2500B 5-Band (FM/LW/MW/SW₁/SW₂)

11-Transistor 1-IC AC/Battery Operation

Latest electronics: efficient silicon transistors and tuned RF stage using FET. High performance IF stage with IC (RF-2500B). OTL circuit for the best in sensitivity, reliability. Large tuning meter. Twin speakers, 12 cm and 9 cm. 2W output. Dial light. Individual tone controls. Built-in antennas. Jacks for earphone/external speaker. Multiplex out. Rec. out/Phono. 336(W) × 220(H) × 112(D) mm. 4.7 kg without batteries.

R-3000/RF-3000 IC

R-3000 6-Band (MW/LW/SW₁-SW₄)

12-Transistor

RF-3000 6-Band (FM/MW/SW₁/SW₂/MB/LW)

19-Transistor

World-wide, super quality portable radio. Exclusive, Roto-Dial system for really accurate station tuning. Gives the finest sensitivity. Separate bass and treble tone level indicators. Magic meter for tuning condition and battery check. 2-speaker system (12 cm and 10 cm) and rich 2W output. Operates on six "D" batteries or optional AC adaptor (Model RD-9430D). Jack for earphone/ext. speaker, ext. antenna, recording, record player. 370(W) × 254(H) × 192(D) mm. 5 kg without batteries.



RF-710LB/EB

RF-858HB

RF-650B

RF-650B IC

2-Band (FM MW) 1-IC 7-Transistor
AC Battery Operation

Monolithic IC in the IF stage gives reliable performance on both FM and MW reception. 2-step tone switch and volume indicator. 500 mW output and 8cm speaker. Operates on AC or four "AA" batteries. Jack for earphone/ext. speaker, MPX out. 185(W) × 107(H) × 54 (D) mm. 900g without batteries.

RF-858HB IC

3-Band (FM/MW/SW) 8-Transistor, 1-IC
AC/Battery Operation

Super quality portable with FET in RF stage. IC and ceramic filter in IF stage for increased reliability. FM locks with AFC. Sliding controls. Meter serves as VU, battery check, tuning meter. Loudness control. 10 cm UJ cone speaker. Three "C" batteries. 1.6W output. Jacks for earphone/external speaker, phono, multiplex out, stereo/record out. 60 minute sleep timer attachable. 212(W) × 132(H) × 55(D) mm. 1.05 kg without batteries.

RF-710LB or EB IC

3-Band (FM/MW/LW or SW) 9-Transistor
AC Battery Operation

Real portable radio. Advanced circuit for superb sensitivity and selectivity. Carrying handle plus convenient AC/battery operation for complete portability indoors or out. AFC on FM for drift-free reception. Vertical slide rule tuning for easy station tuning. Two step tone switch. 500 mW output, 10 cm white cone speaker. Operates on AC or three "C" batteries. 200(W) × 162(H) × 64(D) mm. 1.5 kg without batteries.

National Panasonic make all kinds of electronic combinations. Tape recorders that are also radios. Radios that are tape recorders. Some include record players. And calendars. And alarm clocks. There's even a birdsong alarm. And the smallest TV. We make these products in quantity at our many and varied factories (some have the biggest production lines in the world) at the lowest cost to our customers. And our quality controls are the toughest in the business. Remember that when you buy National Panasonic.



3-Band portable stereo cassette radio has many advanced electronic and styling features.

Condenser microphone is built-in; has wide, long dynamic range.


Pop-up cassette system is a standard feature.



R-1400

R-551B

R-531B

R-531B 
5-Band (MW/SW₁/SW₂/SW₃/SW₄)
8-Transistor AC/Battery Operation

Covers complete range from 525 kHz to 30 MHz. All silicon transistor circuitry. Ceramic filter stabilizes reception. 10 cm speaker and big 1.5 W power. 2-step tone control. Fine tuning. Six "D" batteries or AC. Jacks for earphone/external speaker, phono, AM antenna. 294 (W) × 195 (H) × 100 (D) mm. 2.2 kg without batteries.

R-551B 
5-Band (MW/SW₁/SW₂/SW₃/SW₄)
10-Transistor AC/Battery Operation

Luxury 5-band portable covering complete range from 525 kHz to 30 MHz. All silicon transistor circuitry. Ceramic filter for stable reception, better selectivity. 10 cm PM dynamic speaker and big 1.5 W power. 2-step tone control and fine tuning. Special feature is flash-light tuning indicator for pinpointing station. Six "D" batteries or AC. Jack for earphone/external speaker. 294 (W) × 195 (H) × 100 (D) mm. 2.3 kg without batteries.

R-1400
4-Band (MW/SW₁/SW₂/SW₃) 11-Transistor

Tuned RF stage for exceptional sensitivity. Continuous tone control. Magic meter for tuning and battery check. Band indicator. Fine tuning control. 1.8W output. 12 cm speaker. Dial light. Operates on four "D" batteries. Jack for earphone/ext. speaker, record player, ext. antenna, earth, ext. power, recording. 293 (W) × 207 (H) × 95 (D) mm. 2.72 kg without batteries.

Radio/Cassette

R-530B / RF-530JB



R-520B/RF-520JB

R-520B / RF-520JB

R-520B (MW/SW₁/SW₂) 10-Transistor  
RF-520JB (FM/MW/SW) 15-Transistor

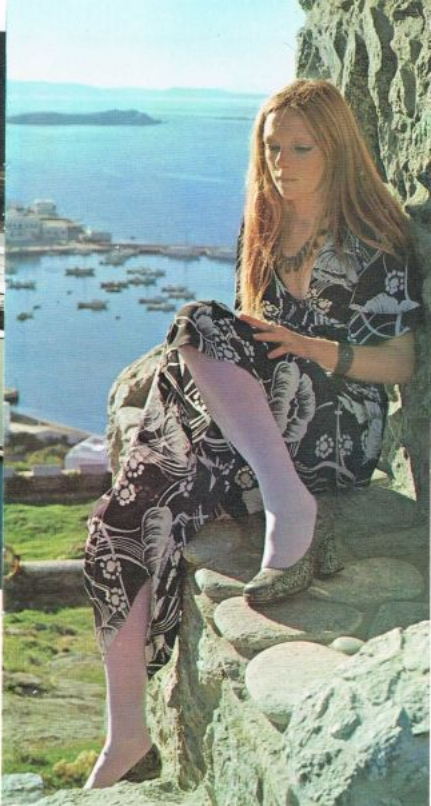
Convenient AC/Battery operation. Cassette tape recorder radio. Record from radio or live through built-in condenser mic. Cassette has auto-stop and automatic recording level. Meter also checks battery. Continuous tone control. Sound monitor. Four "D" batteries 1W output. 283(W) x 186(H) x 77(D) mm. 2.8kg without batteries. Gray, yellow.

R-540B

4-Band (MW/SW₁/SW₂/SW₃)  

17-Transistor AC/Battery Operation

A superfine AC/battery operated 4-band radio and cassette tape recorder, an all-in-one quality portable. Superior solid state circuits for trouble free performance at any time. Push buttons cassette





RF-7490B

RF-7270

RF-7270

2-Band (FM/MW) 17-Transistor Portable/Car Radio with Cassette Tape Recorder

Super quality portable that turns into a car radio with the installation of a simple dashboard bracket. Snap in a cassette tape for fine music or record straight off the radio to build your own tape collection. 15 cm x 10 cm oval speaker. 1.5W output as a portable, 2W as a car radio. Operates on five "D" batteries as portable or 6V, 12V car battery as car radio. Jack for earphone/ext. speaker, Mic-remote, Aux-rec, external and car multiterminal. 271(W) x 256(H) x 86(D) mm. 3.6 kg without batteries.

RF-7490B

2-Band (FM/AM) Portable Radio with Stereo Cassette Tape Recorder 33-Transistor AC/Battery Operation

Unique twin-case fold-together styling. AC/battery operation. Sensitive AM and FM antennas. Separate FM and AM tuning dial and AFC on FM for drift-free reception. Continuous tone and balance control. Two 6" x 4" (15 x 10 cm) oval PM dynamic speakers. Tri-purpose meter for signal strength, stereo/mono indicator or battery drain indicator. Built-in stereo cassette tape recorder. Push-button controls and easy-change cassette pop-up system. Hide-away carrying handle. Operate on AC or Six "D" batteries. Main 343(W) x 318(H) x 124(D) mm. Speaker 160 x 100 mm. 8 kg without batteries.



R-346B

R-331B

R-331B

3-Band (MW/SW₁/SW₂) 8-Transistor AC/Battery Operation

Modern leatherette covered portable. All solid state circuit. Built-in ferrite core antenna, plus telescopic antenna. Gold-brushed front panel. Three "D" batteries. 10 cm speaker. 700mW output. 2-step tone control. Slide rule tuning. Jack for earphone/external speaker. 235(W) x 153(H) x 76(D) mm. 1.45 kg without batteries.

R-346B

3-Band (MW/SW₁/SW₂) 8-Transistor AC/Battery Operation

Convenient AC/battery operation. Two-step tone switch, fine tuning. Carrying handle. 700 mW output. 10 cm speaker. Operates on AC or three "D" batteries. Jack for earphone/ext. speaker, ext. antenna. 246(W) x 160(H) x 77(D) mm. 1.5 kg without batteries.

Transceiver



RJ-8 6-Transistor

Compact size, simple operation and lightweight portability make this the ideal short range transceiver. The advantage of instant contact are yours with ultra smart design that is both placement and functional. Long lasting reliability and rugged performance are assured. Jacks for earphone/external speaker. Operates on four "AA" batteries. 61(W) x 176(H) x 40(D) mm. 335g without batteries.

RJ-20 11-Transistor

A robustly designed long range transceiver. High selectivity is achieved with a mechanical filter and a variable squelch control effectively maintains receiver silence between calls. Cartridge type battery case



R-222H or J 2-Band (MW/SW) 8-Transistor

Combination of elegance with portability. Volume indicator. 2-step tone control. 500 mW output. 6.5cm speaker. Operates on three "C" batteries. Jack for earphone/ext. speaker, ext. antenna, ext. power. 184(W) x 116(H) x 51(D) mm. 720g without batteries.

R-237H or J 2-Band (MW/SW) 10-Transistor

Flash tuning indicator. 2-step tone swith. 500 mW output. 8 cm speaker. Operates on Three "D" batteries. Dial light. Jack for earphone/ext. speaker, ext. power. 203(W) x 131(H) x 43(D) mm. 800g without batteries.

R-247HB or JB 2-Band (MW/SW) 8-Transistor AC/Battery Operation

AC/Battery versatility. All silicon transistor circuit. Built-in ferrite core antenna plus telescopic antenna for highly sensitive reception. Three "D" batteries or AC. 9 cm speaker. 700 mW output. 2-step tone control. Slide rule tuning. Jack for earphone/external speaker. 230(W) x 144(H) x 71(D) mm. 1.25 kg without batteries.



Radio calendar has big digits showing time, day and date.

The world's first talking clock radio. Press the disc and it tells the time.



Digital time-piece and detachable FM/MW radio.





RC-1280B
MW Digital Clock Radio 6-Transistor

Deluxe MW digital clock radio with 24-hour fail-safe alarm, 60-minute sleep timer. Set it and forget it. Independent volume control. Two-level night light. Rotary slide rule tuning. Built-in ferrite core antenna. 8 cm speaker. 250mW output. Jack for earphone/external speaker. Color: ivory with black. 308(W) x 105(H) x 140(D) mm. 1.7 kg.

RC-702B
2-Band (FM/MW) 11-Transistor
Digital Clock Radio

For reluctant risers' birdsong in the morning. Or radio. Fail-safe time set. Sleep timer gives up to 60 minutes of bedtime music. Turns itself off and on. Large, simple to read digits give AM/PM times. Illuminated clock face. Compact design nestles by your bedside. 500 mW output. Choice of black, white, yellow. Fitted with earphone jack and plug-in FM antenna jack. 267(W) x 98(H) x 162(D) mm. 1.6 kg.

RC-703LB IC
3-Band (FM/MW/LW) Digital Clock Radio
1-IC 7-Transistor

Attractive design with slim low lines. The full featured digital clock lulls you to sleep with up to 60 minutes of soothing music. In arising, it stirs your dreams either with a radio music or buzzer alarm. IC circuitry in the IF stage for top performance on all three bands. Illuminated tuning dial. Two step tone switch. 800 mW output through 9 cm speaker. Two step clock light button. 308(W) x 112 (H) x 162(D)mm. Cabinet color: Black, Ivory white. 2.15 kg.



R-1016
1-Band (MW) 6-Transistor

Only hand-high but rich in sound. All solid state circuit. 6cm speaker. 150 mW output. Operates on two "AA" batteries. Jack for external speaker/earphone. Red or black with silver trim. 67.5(W) x 104(H) x 33(D) mm. 287g without batteries.

R-1021
1-Band (MW) 6-Transistor

Compact, one-hand operation Cigarette lighter size. Built-in ferrite core antenna for distant stations. Needs only two penlight batteries. 6 cm speaker. 150 mW output. Jack for earphone/external speaker. Four modern color combinations. 64(W) x 104(H) x 31(D) mm. 180g without batteries.

R-1029
1-Band (MW) 6-Transistor

Pocket size. Giant performance. All solid state circuitry. Ferrite core antenna built-in for the long-distance stations. Operates on two "AA" batteries. 6 cm speaker. 150 mW output. Jack for earphone/external speaker. Five bright modern colors. 71(W) x 115(H) x 35 (D) mm. 190g without batteries.

Table Radio

RL-455B

RL-345

RL-231W/R

RL-106G

RL-134U

RL-134U

1-Band (SW) 6-Transistor

A bright table radio for the SW fan. 800 mW power matched with efficient 10 cm speaker. Four "D" batteries. SW range 2.3—10.0 MHz. 1.45 kg without batteries.

RL-131G

1-Band (MW) 6-Transistor

800 mW output and 10 cm speaker. Four "D" batteries. Cabinet color: sky blue, red. 1 kg without batteries.

RL-231W or R

2-Band (MW/SW) 6-Transistor

700 mW output through 10 cm dynamic speaker. Four "D" batteries. Cabinet color: sky blue or red. 1.45 kg without batteries.

RL-345

3-Band (MW/SW₁/SW₂) 8-Transistor

Trim blend of classic styling. Fine tuning for short wave reception and tone control. 2W output. 12 cm speaker. Six "D" batteries. 3.4 kg without batteries.

RL-455B

4-Band (MW/SW₁/SW₂/SW₃) 8-Transistor

Two speaker (12 cm) and rich 2W output. Flywheel tuning. AC/battery. Continuous tone control. AC or six "D". 5.4 kg without batteries.

These three precision-built products symbolize all that is best from National Panasonic. Our policy is to use our vast technical resources and streamlined manufacturing techniques for the benefit of the customer. Our radio production lines are the biggest in the world. Our quality controls the toughest. We make everything we need, down to the littlest capacitor of them all. National Panasonic products are the soundest buys you can make.



RE-7430B

3-Piece Component AM/FM Stereo Radio has advanced IC, FET circuitry. Speakers can hang on the wall or fit alongside the radio.



**NATIONAL
PANASONIC
RADIOS &
TRANSCIVERS**



Japan's Largest Producer of Electronic and Electrical Home Appliances
MATSUSHITA ELECTRIC

**NATIONAL
PANASONIC
RADIOS &
TRANSCIVERS**

