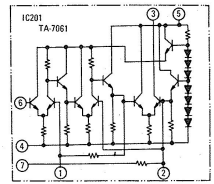
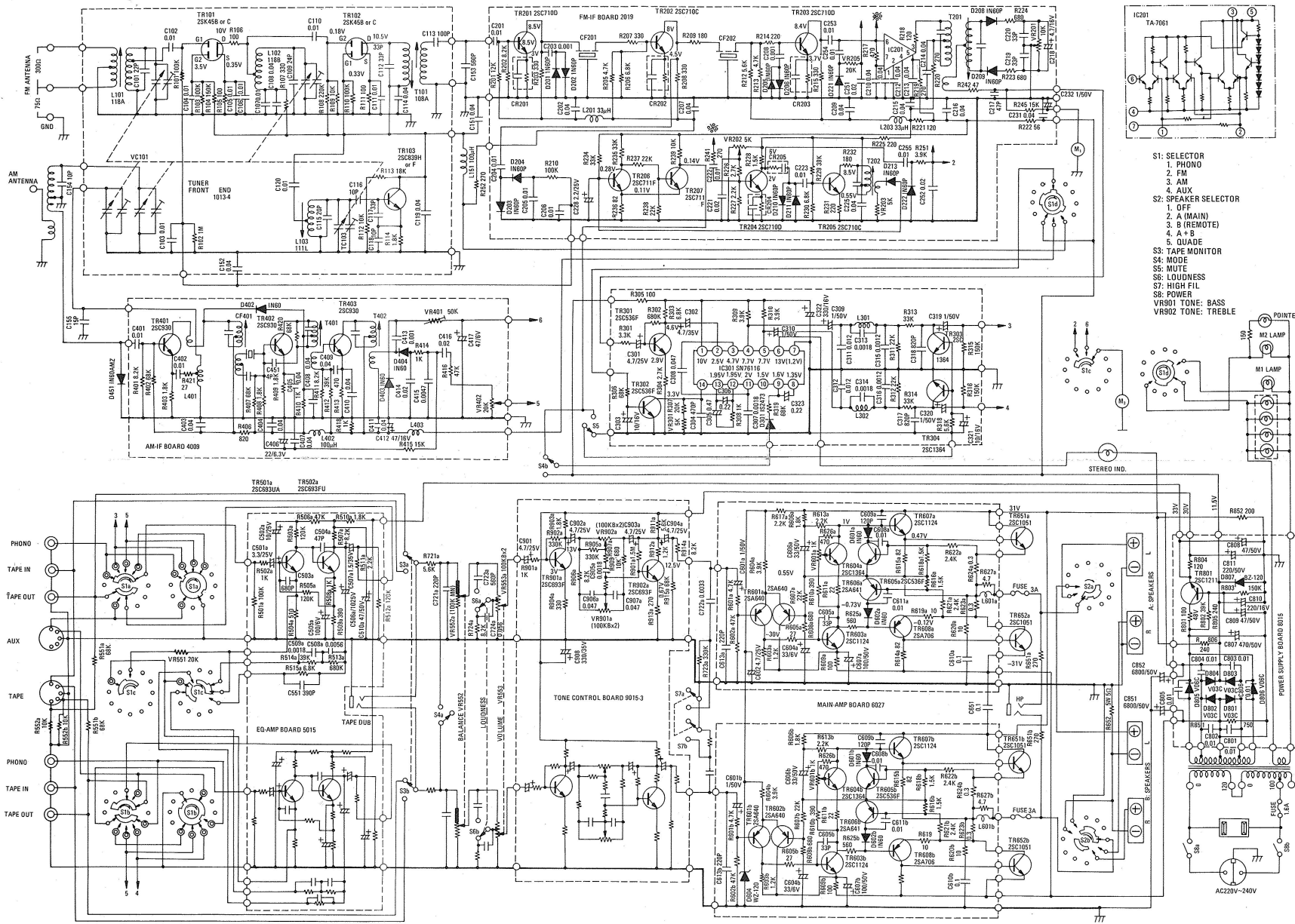


SCHEMATIC DIAGRAM

*New Acoustic Dimension
Model 140*



- S1: SELECTOR**
 1. PHONO
 2. FM
 3. AM
 4. AUX
- S2: SPEAKER SELECTOR**
 1. OFF
 2. A (MAIN)
 3. B (REMOTE)
 4. A + B
 5. QUAD
- S3: TAPE MONITOR**
 S4: MODE
 S5: MUTE
 S6: LOUDNESS
 S7: HIGH FIL
 S8: POWER
 VR01 TONE: BASS
 VR02 TONE: TREBLE

	33K 45 39K 41
	25C 136A 25C 136E
	25C 710 25C 1211 25C 537
	25C 683 25C 536 25C 930 25C 929
	25A 763 25C 1222 25A 660 25C 839 25C 336 25A 656
	25C 1000 25C 380 25C 483
	25C 1345
	25C 1124 25A 706
	25C 1051 25D 188 25D 371

SUBSTITUTE	
TR101-102	3SK37, 3SK41, 3SK35
TR103	25C710, 25C1047
TR201-205	25C830, 25C929, 25C380
TR206-207	25C536, 25C136A, 25C693
TR301-302	25C537
TR303-304	25C711, 25C537, 25C536, 25C628
TR501-502	25C1345, 25C1222, 25C1000
TR601-602	25A763, 25A705, 25A666, 25A493
TR651-652	25D188, 25C1030, 25D37
TR801-802	25C1222, 25C1000, 25C1345

Note:

1. Resistance values are indicated in ohms unless otherwise specified (K=1,000 M=1,000,000).
2. Capacitance values are shown in microfarads unless otherwise noted (P=micro-microfarads).
3. Voltages are measured with respect to chassis ground.

