

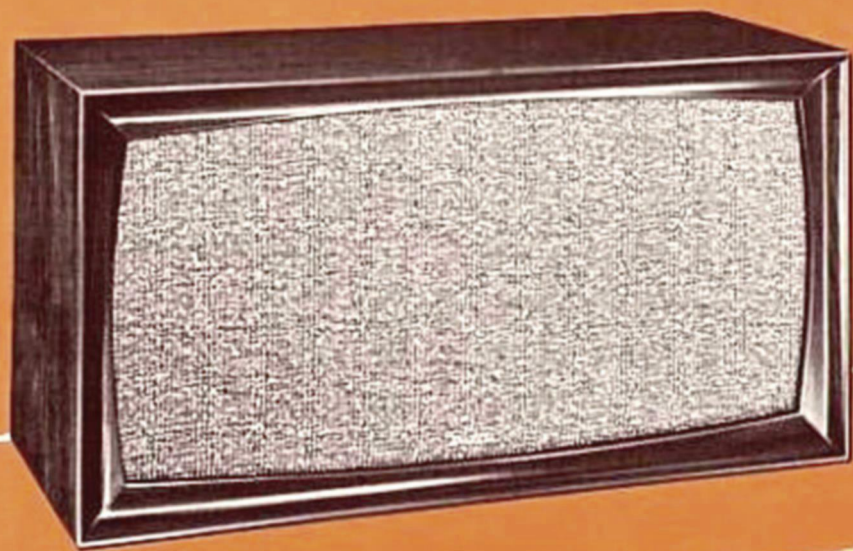


TR-10 *TRi-ette*

YOU SHOULD KNOW THERE IS SOMETHING BETTER!

Jensen "BOOKSHELF" LOUDSPEAKERS

FINE FURNITURE AND UNFINISHED MODELS
FOR STEREO AND MONO HI-FI



DF-1 *Duolette*

TR-10 *TRi-ette*

3-WAY SPEAKER SYSTEM

Compare Jensen's TRI-ETTE* with any other bookshelf loudspeaker system and let your own ears tell you the reason for its rocketing popularity . . . *it sounds better!* The 12" FLEXAIR* high compliance woofer in tube-vented BASS-SUPERFLEX* enclosure gives true low bass down to 25 cycles . . . brings the air suspension principle to peak performance with a new low in distortion. Precisely complementary special 8" midchannel, plus compression driver tweeter with response to 15,000 cycles, delivers the range and fine balance for which Jensen 3-way systems are famous. Special table base or floor stand add the finishing touch to this distinguished piece of furniture. Cabinet is crafted from genuine selected fine hardwood veneers and solids in graceful Danish influence award-winning design. For fine stereo in small space, the TR-10 has won the acclaim of discriminating listeners.

(Photographed with ST-945 Base. Not included—order separately.)



Used with ST-944 stand, TRI-ETTE makes a handsome little lowboy. (Order separately.)



TR-10U UNFINISHED MODEL

Here is the same speaker system, the same performance as the famous TR-10 . . . but with the economy and utility of an unfinished enclosure. Made of smooth 3/4-inch gum hardwood veneer plywood with matching solid banded front edge, it will take a fine wood finish or may be painted to match its surroundings. Excellent for custom build-in mono or stereo systems in home, school or commercial applications. Extra grille former for easy installation of your own grille fabric.

SPECIALLY DESIGNED FOR MAGNIFICENT STEREO AND MONO HI-FI

DF-1 *Duette*

2-WAY SPEAKER SYSTEM

Here is a new high point in loudspeaker value . . . a high quality, economically priced 2-way "bookshelf" system made possible by an entirely new and different high compliance 8" FLEXAIR woofer by Jensen . . . capable of movement *more than twice as far* as previously available units . . . with low distortion bass response down to 36 cycles. A new direct radiator tweeter carries the range smoothly to 14,000 cycles. Fine furniture cabinetry, with genuine selected veneers and matching solids, and a graceful new sculptured front look. Finished on four sides for horizontal or vertical placement. Use on accessory floor stand or table base to give the DUETTE an added furniture touch. Wide frequency range, exceptionally clean bass in tube-vented BASS-SUPERFLEX enclosure, and smooth, balanced response make the DUETTE an excellent solution for a high quality monophonic or stereophonic loudspeaker system (or stereo add-on) at minimum cost.



Illustrated with ST-972 Accessory Floor Base. (Order separately.)



DF-1U UNFINISHED MODEL

This unfinished DUETTE in light, plain 3/4" gum hardwood veneer plywood is easy to finish in mahogany, walnut, blonde, fruitwood or other wood tones. Takes smooth paint or lacquer finish. Solid gum banding on front edge simplifies the finishing job and gives a trim neat appearance. Grille cloth assembly is readily removable and replaceable from front . . . a decided advantage when finishing. Extra grille former furnished for use with your own fabric if desired. Speaker components are exactly the same as in DF-1.

Model TR-10 TRI-ETTE 3-way Speaker System

Completely assembled, wired and tested. Genuine hardwood veneers in choice of Natural Walnut, Tawny Ash or Mahogany. Finished on all four sides. Shipping Weight, 40 lbs.

Net Price.....\$119.50

ST-944 STAND. For floor use. Places top of cabinet 28" above floor. Walnut, Tawny Ash or Mahogany. Shipping Weight, 9 lbs.

Net Price.....\$12.95

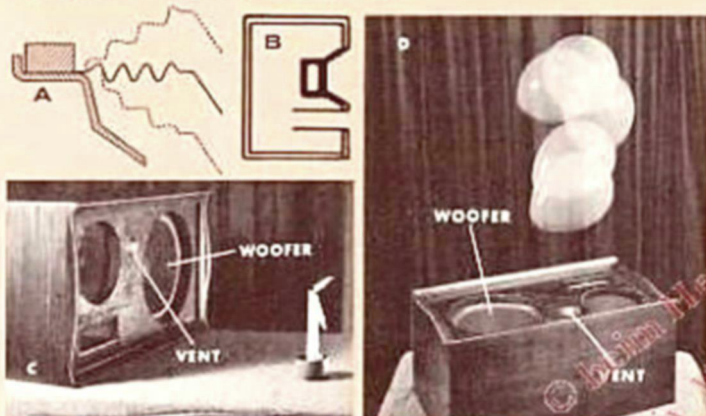
ST-945 BASE. For table or shelf. Adds finishing touch of grace. Walnut, Tawny Ash or Mahogany. Shipping Weight, 2 lbs.

Net Price.....\$5.45

Model TR-10U UNFINISHED. Completely assembled and tested. Natural $\frac{3}{4}$ " gum hardwood veneer plywood, banded front edge. For custom finishing. Complete with extra grille former. Shipping Weight, 40 lbs.

Net Price.....\$89.50

TEAMED FOR TOPS IN SOUND...HIGHEST EFFICIENCY! FLEXAIR* HIGH COMPLIANCE WOOFER... PLUS BASS-SUPERFLEX* TUBE-VENTED ENCLOSURE



Jensen TR-10 and DF-1 systems owe their better sound to advanced electroacoustic engineering that begins where others leave off. The theoretical and practical superiority of reproduction employing the Jensen FLEXAIR woofer in combination with the tube-vented BASS-SUPERFLEX enclosure, is a matter of documented engineering fact, not a mere advertising claim.^{1,2} Only Jensen gives you all these features of vital importance in the performance of the small high fidelity speaker system:

1. HIGH EFFICIENCY. Can be driven by a 10-watt amplifier. This means you can use an inexpensive amplifier and get full room volume or draw only a fraction of the rated power of a bigger amplifier to give an absolute minimum of electrical distortion in the system. Either way,

¹P. B. Williams and J. F. Novak, "Improvement in 'Air Suspension' Speaker Enclosures with Tube Venting." AUDIO, November 1958. Reprints of this paper are available on request.

²J. F. Novak, "Performance of Enclosures for Low-Resonance High-Compliance Loudspeakers." Presented at the Audio Eng. Soc. Convention, New York, October 3, 1958. Published in Institute of Radio Engineers Transactions on Audio, Jan.-Feb. 1959.

Model DF-1 DUETTE 2-way Speaker System

Completely assembled, wired and tested. Genuine hardwood veneers in choice of Natural Walnut, Tawny Ash or Mahogany. Finished on all four sides. Shipping Weight, 28½ lbs.

Net Price.....\$79.50

ST-972 FLOOR BASE. For an added graceful furniture touch. Raises bottom of cabinet 3¾" off floor. Walnut, Tawny Ash or Mahogany. Shipping Weight, 1¾ lbs.

Net Price.....\$7.50

ST-945 BASE. For table or shelf. A decorative style addition. Walnut, Tawny Ash or Mahogany. Shipping Weight, 2 lbs.

Net Price.....\$5.45

Model DF-1U UNFINISHED. Completely assembled and tested. Natural $\frac{3}{4}$ " gum hardwood veneer plywood, banded front edge. For custom finishing. Extra grille former included. Shipping Weight, 28½ lbs.

Net Price.....\$59.95

TR-10 SPECIFICATIONS TR-10U

Input Impedance	16 ohms
Power Rating: Avg. program	30 watts †
Peak	60 watts
Frequency Range	25 - 15,000 cycles
Crossover Frequencies	600 and 4,000 cycles
Overall Dimensions	13½" H., 25" W., 11½" D.
Nominal Woofer Size	12 inch diameter
H-F Control mounted on back.	
Maximum cone motion (woofer) 1" total.	

† Adequate level can be obtained in the average living room with a good quality 10-watt amplifier.

there's a clear-cut advantage! Reduction of power-wasting moving system weight to a minimum and unusually high magnetic system effectiveness in Jensen FLEXAIR woofers, combined with the superior acoustics of the BASS-SUPERFLEX enclosure explains why you need only half as much power as with comparable competitive bookshelf systems.

2. LONG TRAVEL PLUS ULTRA LINEARITY. To reproduce very low frequencies, the woofer cone must be able to move large distances without tightening-up or "snubbing," or other deterrents to uniform motion during the extreme range of travel. Jensen FLEXAIR* woofer movement is 150% to 200% compared with "look alike" imitations. Why? Because not only the Jensen-developed outer suspension, with its extreme accordion action (see A), but also the important internal features of unusually high uniformity of air gap flux over the complete travel distance, linear voice coil suspension and generous mechanical clearances to prevent striking are also provided.

3. LOW, LOW DISTORTION. We say "low" twice, because Jensen exclusively places (1) an efficient low distortion woofer in (2) a sophisticated precisely complementary acoustic surrounding for lowest distortion of the entire combination... the Jensen BASS-SUPERFLEX* tube-vented enclosure (see B). The scientific reasons for the superiority of this combination are thoroughly documented (see reference 1); the result to the ear is an utterly true bass down to extremely low frequencies, without "boom" or "hang-over." The BASS-SUPERFLEX* enclosure contributes importantly because the tube acts as an additional speaker at low frequencies, increases the loading where most needed, reduces woofer diaphragm motion and power requirement. The enclosure is rigid and is air-tight except for vent. Vent action is dramatically illustrated by the deflection of the candle flame in C; in D the air filled balloon is kept in suspension entirely by the air flow pattern from the vent.

4. MECHANICAL STABILITY. Unlike some high-compliance speakers, the FLEXAIR* woofer "stays put." It maintains its centering with precision and always moves axially. There is no sagging with tendency for "rubs" to develop in time, requiring repair.

STEREO IS EASY WITH JENSEN BOOKSHELF SPEAKERS

Easy to fit into your living space... unusually easy on the pocket-book... delightfully easy to listen to... Jensen bookshelf speakers can be your perfect answer to stereo.

You can place a pair on end or side (or one each way), on floor, shelf or bench... wherever they fit in best with your decor. Accessory bases and stands are a help here. Or hang them on the wall if you wish. Building-in is easy and economical with the new unfinished models.

DF-1 SPECIFICATIONS DF-1U

Input Impedance	16 ohms
Power Rating: Avg. program	25 watts †
Peak	50 watts
Frequency Range	36 - 14,000 cycles
Crossover Frequency	2,000 cycles
Overall Dimensions	12½" H., 24" W., 10½" D.
Nominal Woofer Size	8 inch diameter
H-F Control mounted on back.	
Maximum cone motion (woofer) ¾" total.	

† Adequate level can be obtained in the average living room with a good quality 10-watt amplifier.

jensen "BOOKSHELF" HI-FI SPEAKER KITS

KT-33

3-WAY SPEAKER SYSTEM KIT



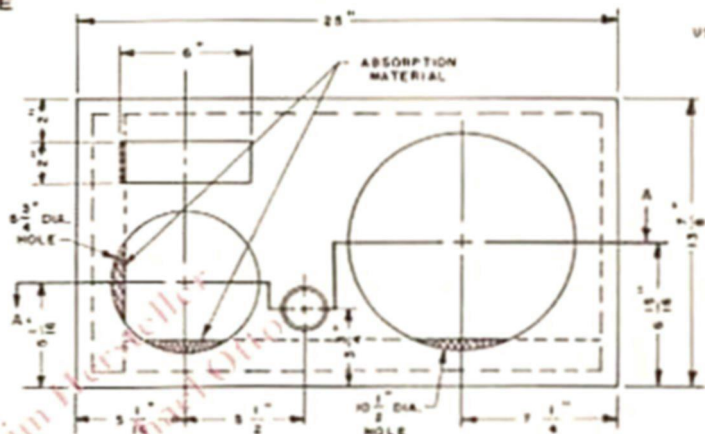
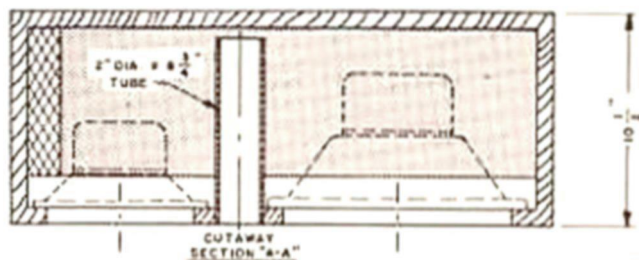
*T. M.

If you want TRI-ETTE performance and would like to make the enclosure or custom build-in yourself, the KT-33 kit is the answer. Includes P12-NF 12-inch FLEXAIR woofer, PS-UM 8-inch midchannel, RP-103A compression driver tweeter, H-F control, crossover network, wiring cable and full instructions for enclosure construction and installation. Shipping weight, 20 lbs. (Enclosure vent-tube 46MP06 must be ordered separately. Price 50¢ postpaid, direct from factory.)

\$80.00

KT-233
Matched TWINKIT*
for Stereo
\$160.00

BASIC ENCLOSURE DATA



ALL JOINTS MUST BE
AIR TIGHT
USE 3/4" PLYWOOD
THROUGHOUT

KDF-1

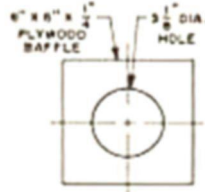
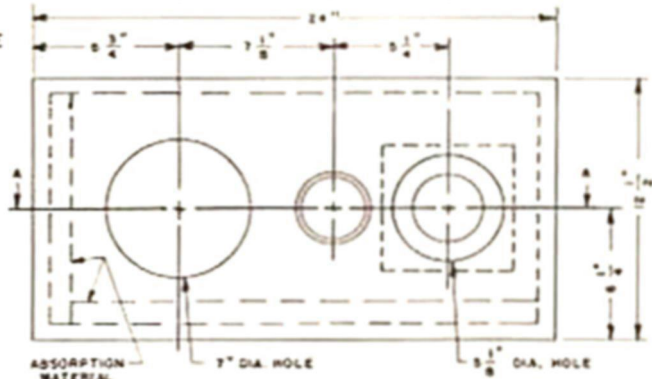
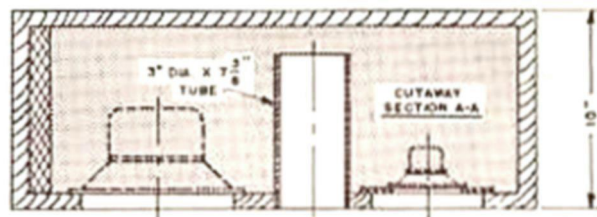
2-WAY SPEAKER SYSTEM KIT



Make your own cabinet or built-in system, get DF-1 complete system performance and save with this speaker kit. Includes PS-QF 8-inch FLEXAIR woofer, enclosure vent-tube, P35-VAH tweeter, coupling element, terminal panel, H-F control, wiring material and complete instructions for building enclosure. Shipping Weight, 7 3/4 lbs.

\$29.75

BASIC ENCLOSURE DATA



ALL JOINTS MUST BE
AIR TIGHT
USE 3/4" PLYWOOD
THROUGHOUT

