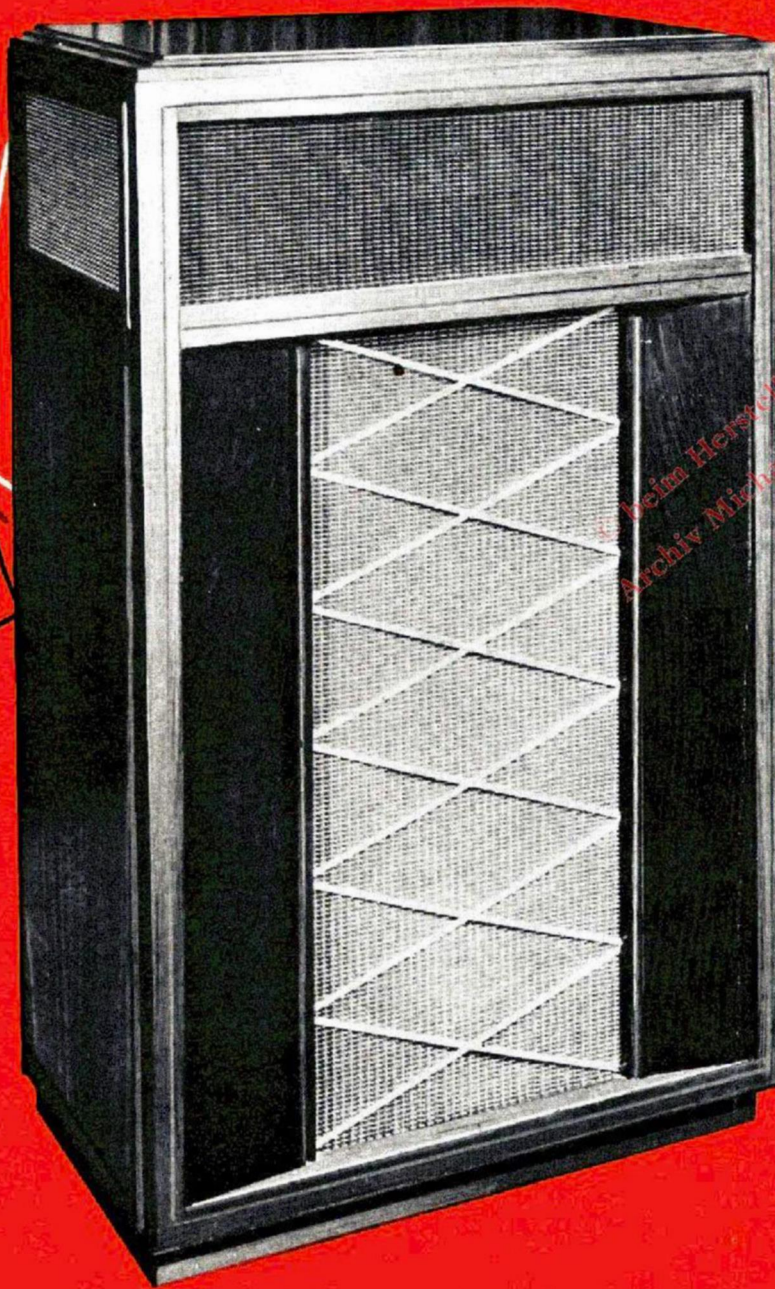




Imperial



Jensen
authentic
**HIGH FIDELITY
LOUDSPEAKERS
SYSTEMS AND
ACCESSORIES**

... if you are a music lover

Music lovers have a way of becoming audio hobbyists, and audio hobbyists turn into music lovers. Be that as it may, these suggestions are for those to whom MUSIC is the thing, who prefer a minimum of experimenting, yet want realism far surpassing the capabilities of the mass-produced phonograph.

IMPROVING THE MASS-PRODUCED SET

Suppose you have one of the many moderate to low cost phonographs or combinations. If your budget dictates a low expenditure for improvements, or if you want to feel your way into high fidelity, experts agree that a better loudspeaker should be your first acquisition.

You can make an appreciable improvement at lowest cost by simply substituting one of the Extended Range speakers listed on back cover, for the same size speaker in your present cabinet. Your neighbourhood radio serviceman or high fidelity dealer can install it for you if need be. However, *this is not to be considered as a final speaker purchase if you want truly outstanding results.* If you have a set equipped with a 15" or 12" speaker, a range of choices up to the ultimate is available. If it is a 15" unit replace with K310A coaxial (inexpensive) H-520 coaxial (moderate), H-530 coaxial (medium-expensive) or the G-610 triaxial (expensive). K-210 coaxial and H-222 coaxial are available as 12" speaker replacements.

Ultimately (or perhaps now) you will probably wish to install the new speaker in a separate cabinet or built-in enclosure for greatly improved bass response; most commercial sets have totally inadequate size and acoustic proportioning for good bass reproduction.

Undoubtedly these speaker improvements will reveal the fact that there are shortcomings in the pickup in your record player. There is a new wealth of faithful, exciting musical detail on modern records which you can only get in full with a high-performance pickup. The amplifier should also be scrutinized for possible deficiencies. Your high fidelity dealer can help you make suitable selections.

GOING ALL-OUT FOR HIGH FIDELITY?

... It's Important How You Spend Your Hi Fi Dollars

If you already have high fidelity equipment, there are real and worthwhile possibilities for enhancing your musical enjoyment

through improving smoothness and cleanness, eliminating distortions and extending frequency range. If this appeals to you, please note our comments below to audio hobbyists.

If you are about to start in high fidelity, you face the problem of selecting an assemblage of equipment: changer or turntable, pickups, amplifier, loudspeaker (or complete reproducer) and enclosure. This need not be complicated despite the large total offering of items and conflicting and confusing endorsements of "experts". The purchase of a Hi Fi system is basically not much different than the purchase of a new appliance, new furniture or even a car. All these things add to the every-day pleasure of modern living and a reasonable amount of thought should be given prior to purchase. We suggest this easy procedure.

Decide approximately how much money you are prepared to spend.

Appropriate at least one-half of this amount for the loudspeaker and enclosure or complete reproducer. With this amount in mind, select these items from the catalog descriptions following.

The loudspeaker and enclosure (reproducer) is the "heart" of a high fidelity system and is the item that should be given the most consideration in selecting units for your system.

NOTE: Authorities on hi fidelity agree that at least 55% of your total expenditure should be for the speaker and enclosure (or complete reproducer), 20-30% for the amplifier and 15-25% for the player mechanism.

Now that you have selected from this catalog the speaker and enclosure, visit or write your high fidelity dealer. In collaboration with him, tentatively select changer or turntable, pickups and amplifier. Except for amplifiers, choices are few in the really good category. Also, since listening levels in an average home situation are relatively low, a well-designed, inexpensive low wattage amplifier (10 watts or less) will provide excellent performance when used in conjunction with a high quality loudspeaker system. It is essential that the loudspeaker reproducer have more power handling capacity than the amplifier... They need not be matched.

If you follow the above general procedure within reasonable limits, you can be assured of getting the most for your money—of getting the kind of sound you will enjoy—of getting the real satisfaction that comes from listening to hi fidelity.

... if you are an audio hobbyist or professional

As an audio hobbyist or professional the thrill of listening to the richness of high fidelity music is not a new experience.

As a connoisseur of good music, however, we are confident that comparable thrills do exist for you in the kind of high fidelity you can now have. With the Jensen equipment described in this catalog, there are many excellent opportunities for improving the reproduction quality of any high fidelity system.

For authentic high fidelity, for the ultimate in reproduction—there's a totally new sound, utterly real, undoubtedly the finest sound you've ever heard, in the JENSEN IMPERIAL (P.3). Completely authentic with smooth coverage of the complete frequency range and in cabinetry that demands a place of honor in the distinguished home.

It will be rewarding to hear the smooth, realistic performance of the new TRi-PLEX 3-Way Reproducer System, which now attains a goal long sought by both audiophiles and musicians in its nicety of balance, absence of audible distortion and smoothly extended complete frequency range; it is housed in the new JENSEN bass "Ultra-Flex" enclosure.

You can duplicate or approach TRi-PLEX performance in a built-in custom installation. All the system components are available. (See P. 4 and back cover)

The JENSEN CONCERTO is a true 2-way system with separate

"woofer" and "tweeter". High fidelity reproduction in a compact enclosure to fit even the most limited living space. Finer reproduction cannot be attained except at far greater cost. Components for the 2-way custom installation are also available (P.5 and Back Cover).

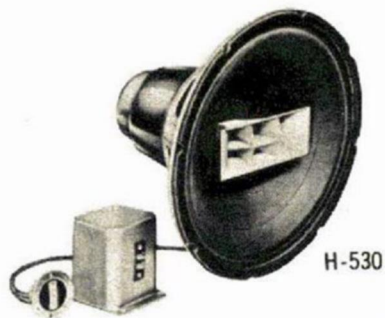
Another excellent addition to the JENSEN 2-way reproducer systems is the complete line of "DUETTES". Excellent as an addition to existing radio, television, phonograph or tape recorder for true hi-fi, also as a reproducer for a compact, inexpensive Hi-Fi System (P.3 and P.5).

Do you suspect that your present system is short on frequency range at the "top"? You can prove you are right... gain the important-to-fidelity advantage of smoothness by adding the RP-302 Ultra High Frequency Unit and A-402 Network to your present equipment. The gain in brilliance and smoothness will be a revelation to you.

Any 15" or 12" speaker can benefit in bass from one of the new Jensen Bass "Ultra-Flex" Cabinets. Designed to take full advantage of corner wall loading, but also uniquely effective on a sidewall, they perform substantially better than bass-reflex cabinets... are able to out-perform previously available units of similar size.

Jensen's outstanding Triaxial and Coaxial Loudspeakers will provide notable improvements over present equipment in many a high-fidelity system.

Jensen COAXIAL SPEAKERS



H-530 - 15"

This Coaxial is the best two channel system available. In wide range extension, in the unusual degree of smoothness and the fine balance of response, this new coaxial has been acclaimed as a new milestone in speaker engineering. Low frequencies are reproduced by a highly efficient 15" L-F unit designed especially for a smooth transition in the crossover region. Upper channel is a new compression driver perfectly matched to a special H-F divided cellular Hypex horn to reproduce a wide frequency range above 2000 cycles.



H-520 - 15"

A new coaxial loudspeaker with the smoothness, fine balance and wide range response you expect in a truly advanced-design 2-way system. A compression driver unit loaded by a 6-cell Hypex horn reproduces frequencies above 2000 cycles. An efficient 15" L-F unit handles the lower frequencies. A top quality speaker in its price range.



H-222 - 12"

Specially designed to bring improved speaker performance to those applications where speaker size is limited by enclosure restrictions or the necessity to replace an existing 12" unit with one of the same dimensions. In frequency range, response smoothness, and in the high power-handling capacity and freedom from "break-up" of the well-designed compression-driver high-frequency channel, the H-222 advances the standard of performance in the 12" size class to a new high. Similar in performance to the H-530. The driver unit employs a light but rigid plastic diaphragm for high efficiency in a precision sound chamber coupled to the horn throat. Low and high frequency units constitute a true 2-way system, each operating independently for best performance over the assigned frequency range, with smooth transition achieved by correct acoustic design.



K-310A - 15"

In cleanness, presence and spatial distribution of high frequencies, as well as in extent of h-f range, Model K-310A will out-perform many speakers offered at substantially higher prices. Good efficiency and power rating. An eminently satisfactory loud speaker for listeners who are hard to satisfy. Has the JENSEN Diaplane radiator and new piston-type h-f unit. Integral frequency-division system. Alnico 5 PM structure.



K-210 - 12"

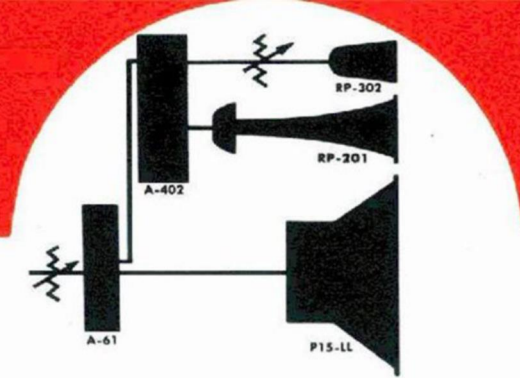
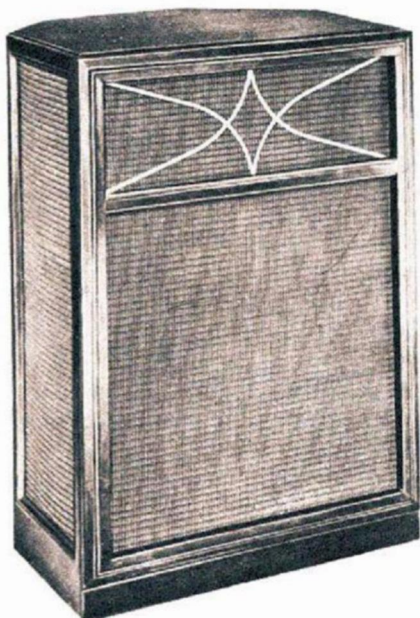
Model K-210 coaxial provides high-fidelity reproduction characteristic of the Coaxial 2-way system in a unit of small size and amazingly low cost. Its compactness and low cost make it ideal for applications where these factors are limitations, as a modernizing unit for radio receivers, phonographs, and television sets equipped with 12" single-unit direct-radiator speakers. Complete with built-in frequency-division system. Balance control may be added if desired.

Model	Stock No.	Impedance	Power Rating	Baffle Opening	O.D.	Depth	Shipping Weight	User Net
H-530	ST-893	16 ohms	30 watts	13 $\frac{1}{4}$ "	15 $\frac{1}{8}$ "	10 $\frac{1}{2}$ "	25 lbs.	178.10
H-520	ST-892	"	25 "	13 $\frac{1}{4}$ "	15 $\frac{1}{8}$ "	9 $\frac{3}{4}$ "	16 "	109.30
H-222	ST-875	16 "	25 "	10 $\frac{1}{2}$ "	12 $\frac{1}{8}$ "	8 $\frac{1}{4}$ "	12 "	74.95
K310A	ST-891	16 "	16 "	13 $\frac{1}{4}$ "	15 $\frac{1}{8}$ "	8 $\frac{1}{8}$ "	18 "	51.70
K210	ST-831	8 "	12 "	10 $\frac{1}{2}$ "	12 $\frac{1}{8}$ "	6 $\frac{5}{16}$ "	7 "	34.15

Jensen TRi-PLEX 3-WAY REPRODUCER SYSTEM

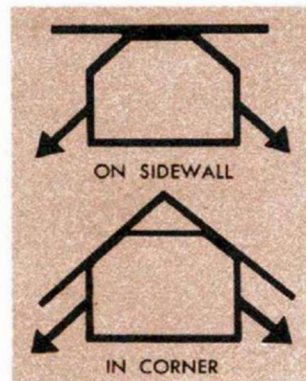
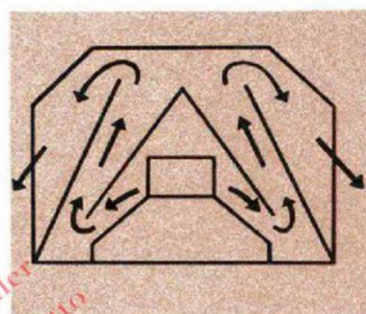
TRi-Plex

Jensen's new greater TRi-PLEX is offered with the conviction that in quality of reproduction it will outperform any comparable speaker system. Bass response has been enhanced with the new Bass-Ultraflex enclosure. Three completely independent reproducers divide the frequency range, the combined total result being blended into a superb unity which cannot be approached with short-cut designs. Individual controls on the side of the cabinet precisely adjust response balance to your personal preference. Choice of selected Mahogany or Blonde Korina veneers with genuine matching hardwood trim. Each TRi-PLEX is individually tested and is accompanied by a certificate and guarantee of performance.



Three completely independent reproducers divide the frequency range (RP-302, RP-201, P15-LL). Completely assembled, wired and tested in BASS "ULTRA-FLEX" CABINET. Frequency Range Rating: +8 LIM*. Impedance, 16 ohms. Power Rating: 35 watts. 38 5/8" high, 26" wide, 19 7/8" deep. Shipping Weight, 124 lbs.

*For complete explanation with regard to the Jensen LIM ratings, refer to Technical Monograph No. 4. (See back page).



The Bass Ultra-Flex cabinet retains the advantages of the folded horn back-loading feature, improving l-f performance when a corner position is not practicable.

Since the Bass Ultra-Flex also radiates from its sides, effective operation is obtained when it is placed against a sidewall; full corner effect when cabinet is placed in a corner.

MODEL TP - 200 "TRI-PLEX" REPRODUCER

- ST-909—Selected Mahogany..... User Net ~~429.95~~
- ST-908—Blonde Korina..... User Net ~~435.00~~

3-WAY SYSTEM COMPONENTS

P15-LL LOW FREQUENCY UNIT

Rugged 15-in. "woofer" handles bass region up to 600 cycles (2000 cycles in 2-way system). Edge damping. Resonance, 37 cycles. Power rating, 35 watts. Impedance, 16 ohms. Shipping Weight, 18 lbs.

ST-904 User Net..... **78.10**

RP-201 HIGH FREQUENCY UNIT

Reproduces the range from 600 to 4000 cycles as the mid-channel in a 3-way system. Driver unit loaded by cast aluminum Hypex horn. Coverage angle 115°. Impedance 16 ohms. Power rating with A-61 network, 35 watts speech and music signal input to system. Shipping Weight, 9 lbs.

ST-897. User Net..... **58.60**

RP-302 ULTRA HIGH FREQUENCY UNIT

Covers the top of the range from 4000 cycles to the highest audible frequencies with unexcelled smoothness and freedom from distortion. Coverage angle 120°. Impedance, 16 ohms. Power rating with A-402 network. 35 watts speech and music signal input to system. Mounts in 1 11/16" hole in baffle or on bracket. Furnished with unit. Satin brass finish. Shipping Weight, 3 lbs.

ST-899. User Net..... **46.20**

A-402 4000 CYCLE CROSSOVER NETWORK

Two-channel type; high-pass transmits everything above 4000 cycles, low-pass everything below this frequency. 180° constant-resistance type. 4 3/8" high, 3 1/2" wide, 3 1/4" deep. Shipping Weight, 3 lbs.

ST-898. User Net..... **11.30**

A-61 600 CYCLE CROSSOVER NETWORK

Sends frequencies above 600 cycles to A-402 for further division; below 600 cycles to the P15-LL unit. Two-channel, 180° constant-resistance type, with 12db/octave attenuation outside pass band. 5 1/4" high, 7" wide, 4 5/8" deep. Shipping Weight, 5 1/4 lbs.

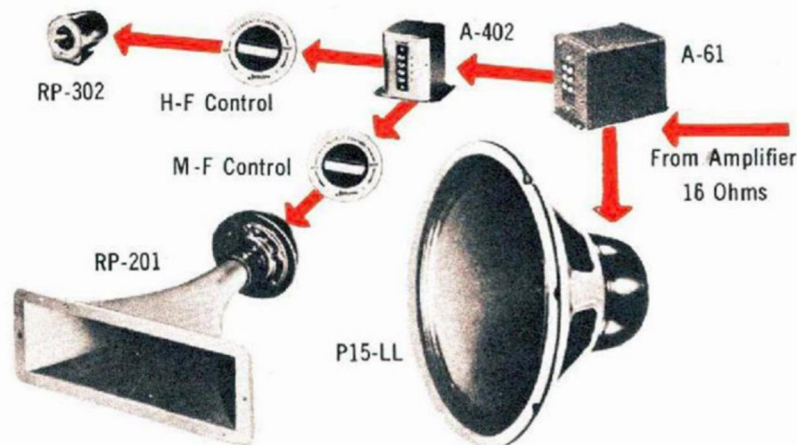
ST-896 User Net..... **24.10**

CONTROLS: All controls have flush satin brass cup escutcheons, appropriately marked, with matching bar knobs. Mounts in 1 11/16" hole.

HF Control. For adjusting balance of HF unit 16 ohms impedance. ST-901. User Net..... **\$3.70**

MF Control. For adjusting balance of mid-channel unit. 16 ohms impedance. ST-917. User Net..... **\$5.95**

Level Control. For controlling overall level at the speaker. 16 ohms impedance. ST-880. User Net..... **\$5.95**



Jensen Concerto

2-WAY REPRODUCER SYSTEM

A true 2-way system with separate "woofer" and "tweeter"—high fidelity reproduction in a compact enclosure to fit even the most crowded living space. Finer music reproduction cannot be approached except at far greater cost. L-F unit is the new P12-NL 12" speaker especially designed for this system. In combination with the Bass-Ultraflex cabinet, the system gives full bass response. RP-102 H-F unit handles frequencies above 2000 cycles, providing exceptional smoothness and approaching the upper limits of audibility. H-F Balance Control on cabinet side. New cabinet design reflects fine proportions and clean sculptured appearance. Available in selected Mahogany or Blonde Korina veneers. Reproducer is fully assembled and precisely tested at the factory. Impedance, 16 ohms. Power rating, 25 watts. Ship. Wt., 62 lbs.

MODEL CT-100 "CONCERTO" 2-WAY REPRODUCER

ST-915. Selected Mahogany..... User Net **\$226.20**
 ST-914. Blonde Korina..... User Net **\$231.00**



Jensen TV Duette leads for TRUE High Fidelity... in compactness... in economy

The Duette is an elegant addition to traditional or modern home decor. Handsomely styled chest design is available in both selected Mahogany and Blonde Oak veneers with genuine matching hardwood trim. Fits on bookshelf or table in small space. For a free-standing piece, add the graceful, modern wrought iron legs (not furnished—available separately).

Duette "Treasure Chest" gives the full performance of the true two-way system with its special 8-inch "woofer" and compression driver "tweeter" in an unusually compact, scientifically designed acoustic enclosure. Ideal for small-space hi-fi system, excellent as an improvement addition for true hi-fi from existing radio, TV, phonograph or tape recorder. Capable of adequate bass reproduction, even at low listening levels. Clean, smooth response with the unmistakable presence of the true two-way reproducer. Impedance: 4 and 8 ohms. Power rating: 20 watts maximum speech and music input. Size 11" high, 23 1/4" wide, 10" deep. Shipping Weight: 24 lbs.

MODEL DU-300 DUETTE "TREASURE CHEST" REPRODUCER

ST-861 Mahogany or ST-860 Blonde..... User Net **\$105.20**
 (Order ST-861 for mahogany; ST-860 for blonde oak)
 ST-862 Set of wrought iron legs..... User Net **\$5.85**

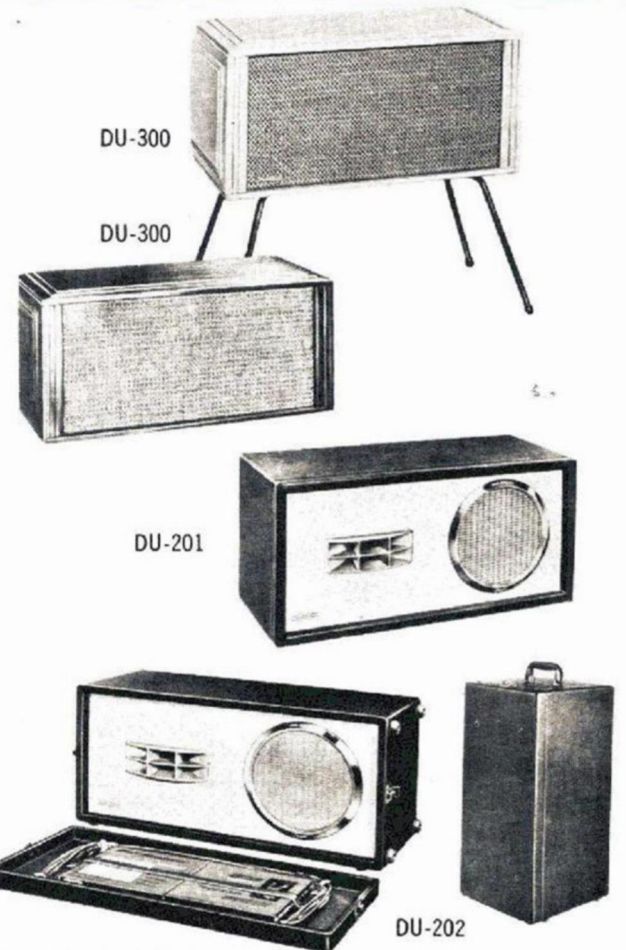
MODEL DU-201 DUETTE REPRODUCER

Rich, attractive burgundy pig-skin-grained Fabrikoid finished cabinet with contrasting front panel and cast metal trim copper finished. Same size and electrical and acoustical specifications as DU-300.

ST-890 DU-201 Reproducer..... User Net **\$85.95**

MODEL DU-202 DUETTE "PORTABLE" REPRODUCER

Black leatherette case with contrasting gray panel. Ideal for use with tape recorders, portable record players, electronic musical instruments, for band sound reinforcement... by professional recording engineers, lecturers, musicians, and hi-fi listeners. Two rugged receptacles on back of case allow you to plug in at either 4 or 8 ohms as needed. Lid holds 25-foot cable with plug, plus handy storage for two 7" or three 5" boxes of tape held by retaining strap. "Carry tested" rattle-proof handle on end of case. Sturdy construction, yet weighs only 21 lbs. ST-890 DU-202 Reproducer..... User Net **\$106.55**



2-WAY SYSTEM COMPONENTS

P12-NL LOW FREQUENCY UNIT

New rugged 12" "woofer" especially designed for 2-way systems. Handles bass up to 2000 cycle crossover. Impedance, 16 ohms. Power rating, 25 watts. Shipping Weight, 10 lbs. ST-912..... User Net **50.20**

RP-102 HIGH FREQUENCY UNIT

A new advanced designed "tweeter" for use in 2-way systems crossing over at 2000 cycles. Reproduces from 2000 cycles to extremely high frequencies with smooth response. Impedance, 16 ohms. Power rating, 35 watts when used with A-204 network. Shipping Weight, 6 1/2 lbs. ST-895..... User Net **39.00**

A204 2000 CYCLE CROSSOVER NETWORK

Two-channel type. High-pass section transmits everything above 2000 cycles; low-pass, everything below 2000 cycles. 180° constant-resistance type. 4 3/8" high, 3 1/2" wide, 3 1/4" deep. Shipping Weight, 3 3/4 lbs. ST-894..... User Net **17.90**

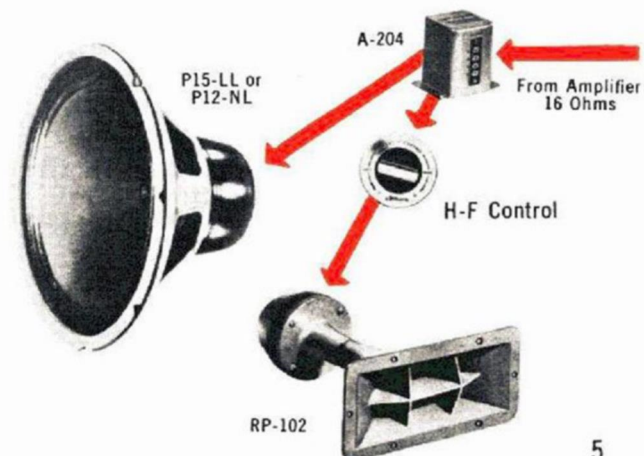
CONTROLS: All controls have flush satin brass cup escuscheons, appropriately marked, with matching bar knobs. Mounts in 1 1/16" hole.

HF Control. For adjusting balance of HF unit. 16 ohms impedance.

ST-901..... User Net **\$5.70**

Level Control. For adjusting overall level at the speaker. 16 ohms impedance

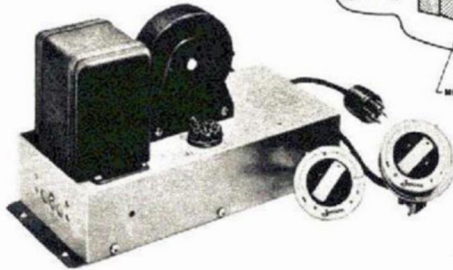
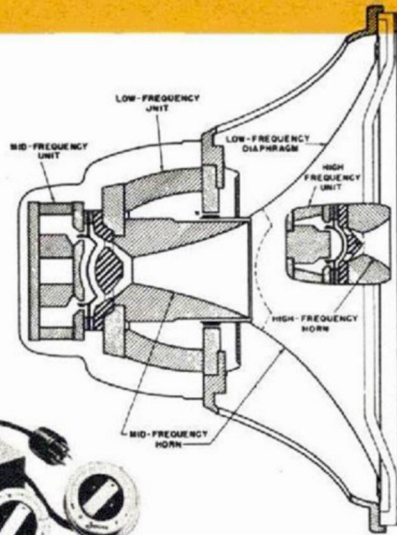
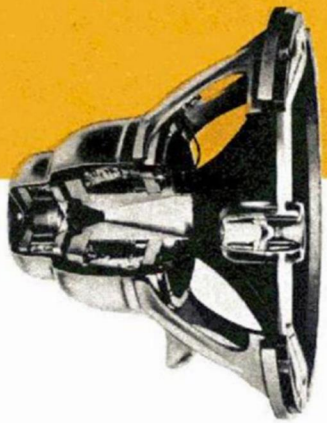
ST-880..... User Net **\$5.95**



THE ORIGINAL AND ONLY UNITARY 3-WAY LOUDSPEAKER

WORLD'S FINEST

Jensen G-610 TRIAXIAL



The G-610 has, by a considerable margin, the widest frequency range of any loudspeaker known. It has a JENSEN Frequency Range Rating of +8 LIM*, the highest that can be applied to a loudspeaker intended for listening purposes. It is the first loudspeaker with efficient response in the upper cut-off region for the best ears. The response is exceptionally smooth over the entire frequency range. The range may be restricted at will by means of the H-F Control.

Radiation covers a relatively wide angle in both vertical and horizontal planes due to special features of the design including the use of a very small horn for the h-f unit.

Efficiency is very high due to high gap densities, light, efficient moving systems and effective horn loading. The total magnetic energy is the highest ever incorporated in a loudspeaker.

With a maximum power rating of 35 watts, the G-610 will be operated far below maximum capacity in most applications. The maximum rating is sufficient for high quality coverage of good sized audiences.

SPECIFICATIONS SPEAKER UNIT

Frequency Range Rating: +8 LIM*.

Input Impedance: 16 ohms at input terminals to system on Network chassis. (See Model T-201 and T-202 Impedance Adjusting Transformer listings on this page for alternative impedances).

Power Rating: 35 watts maximum speech and music signal input.

Dimensions: Baffle opening, 13 1/4" O.D., 15 3/8". Overall depth, 10 3/4".

Finish: Satin brass on h-f unit, yoke and rear cover. Yoke screen, blue enamel. Housing, blue gray.

CROSSOVER AND CONTROL NETWORK

(Furnished with Speaker Unit as a part of G-610 System)

Crossover Frequencies: 600 and 4,000 cycles.

Control Facilities: OVERALL LEVEL CONTROL and 4-position HIGH FREQUENCY CONTROL, for panel mounting, on 36" cords. Flush type satin brass escutcheons and bar knobs. ROOM SIZE AND BRIGHTNESS CONTROL. Under-chassis terminals afford alternative adjustments to suit individual room acoustics. (Shipped adjusted for average conditions. See instructions before making changes).

Terminal Facilities: Barrier type screw terminal strip. Socket for transformer plug; circuit normally closed by shorting plug when transformer is not required. 24" cord and plug for speaker unit connections.

Dimensions: 5" wide by 10 5/8" long (11 3/4" including mounting flanges). Height, 2 5/8" (6 7/8" overall).

Finish: Blue gray hammer with contrasting blue black.

ST-900. G-610 complete with crossover and control network.

User Net **\$347.50**

IMPEDANCE-ADJUSTING TRANSFORMERS

When an impedance other than 16 ohms is required, an impedance-adjusting transformer is necessary. Models T-201 and T-202 are high fidelity units especially designed for use with the G-610 and have the convenient feature of mounting directly on the network chassis. Connections are established by removing a shorting plug and inserting the transformer plug. *If other transformers are used, they should not introduce appreciable frequency discrimination or distortion between 30 and 20,000 cycles or the system performance may be impaired.*

Model T-201 Transformer Assembly. Provides alternative 4 or 8 ohm input, either of which is available by proper selection of terminals on Network chassis. ST-846. User Net **\$17.00**

Model T-202 Transformer Assembly. Provides 500-600 ohm impedance. ST-847. User Net **\$17.00**

*For complete explanation with regard to the Jensen LIM ratings, refer to Technical Monograph No. 4. (See back page).

ACCESSORIES

CROSSOVER NETWORKS

A-402 4000 CYCLE CROSSOVER NETWORK

Two-channel type; high-pass transmits everything above 4000 cycles, low-pass everything below this frequency. 180° constant-resistance type. 4 3/8" high, 3 1/2" wide, 3 1/4" deep. Shipping Weight, 3 lbs.

ST-898. User Net **\$11.30**

A-61 600 CYCLE CROSSOVER NETWORK

Sends frequencies above 600 cycles to A-402 for further division; below 600 cycles to the P15-LL unit. Two-channel, 180° constant-resistance type, with 12db/octave attenuation outside pass band. 5 1/4" high, 7" wide, 4 5/8" deep. Shipping Weight, 5 1/4 lbs.

ST-896. User Net **\$24.10**

A-204 2000 CYCLE CROSSOVER NETWORK

Two-channel type. High-pass section transmits everything above 2000 cycles; low-pass everything below 2000 cycles. 180° constant-resistance type. 4 3/8" high; 3 1/2" wide, 3 1/4" deep. Shipping Weight, 3 3/4 lbs.

ST-894. User Net **\$17.90**



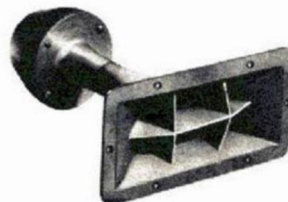
A-204

Z-3422 AUTOTRANSFORMER

A very high quality matching device with extremely wide frequency range. Will effectively match any two of 16/8/4 ohm impedances. (Not required for Jensen three way or two-way systems as listed, but useful when some components of other impedances are to be used with Jensen networks, and other matching problems.)

User Net **\$7.05**

HIGH FREQUENCY UNITS



RP-102



RP-302

RP-201 HIGH FREQUENCY UNIT

Reproduces the range from 600 to 4000 cycles as the mid-channel in a 3-way system. Driver unit loaded by cast aluminum Hypex horn. Coverage angle 115°. Impedance 16 ohms. Power rating with A-61 network, 35 watts speech and music signal input to system. Shipping Weight, 9 lbs.

ST-897. User Net **\$58.60**

RP-302 ULTRA HIGH FREQUENCY UNIT

Covers the top of the range from 4000 cycles to the highest audible frequencies with unexcelled smoothness and freedom from distortion. Coverage angle 120°. Impedance, 16 ohms. Power rating with A-402 network, 35 watts speech and music signal input to system. Mounts in 1 1/8" hole in baffle or on bracket. Furnished with unit. Satin brass finish. Shipping Weight 3 lbs.

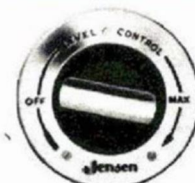
ST-899. User Net **\$46.20**

RP-102 HIGH FREQUENCY UNIT

A new advanced design "tweeter" for use in 2-way systems crossing over at 2000 cycles. Reproduces from 2000 cycles to extremely high frequencies with smooth response. Impedance, 16 ohms. Power rating, 35 watts when used with A-204 network. Shipping Weight, 6 1/2 lbs.

ST-895. Net Price **\$39.00**

HF, MF AND LEVEL CONTROLS



Flush Satin brass cup escutcheons, appropriately marked, mounting in 1 1/8" holes, and matching bar knobs. 25" leads attached.

HF Control. For adjusting balance of HF unit. 16 ohms Impedance. ST-901. User Net **\$5.70**

MF Control. For adjusting balance of mid-channel unit. 16 ohms Impedance. ST-917. User Net **\$5.95**

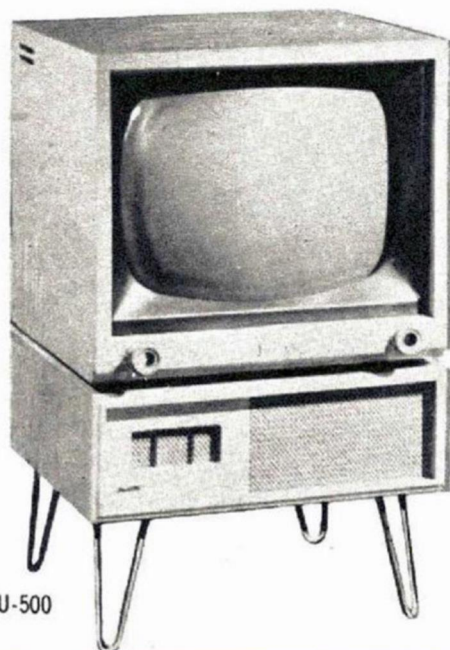
Level Control. For controlling overall level at the speaker. 16 ohms Impedance. ST-880. User Net **\$5.95**

DON'T GET HALF A TV PROGRAM
HEAR IT ALL WITH

Jensen TV Duette



DU-400



DU-500

Never before a hi-fi speaker... so beautiful!... so versatile!... so useful!

1. A genuine high fidelity loudspeaker you can be proud of, in beautiful convenient table form, by Jensen—recognized leader in hi-fi.
2. Uses two different specially-designed speakers in "woofer" and "tweeter" combination like expensive speaker systems.
3. Replaces single small speakers used in most table TV sets. Hear thrilling richly-defined music, live voice quality and realistic picture-centered sound.
4. "Show-off" switch lets your friends hear the before and after difference, also instantly changes from TV to Record Player, Tape or FM.
5. Saves space and money! TV Duette serves for other hi-fi uses, too.

Your TV set has FM sound circuits capable of capturing the wealth of realistic tonal beauty painstakingly transmitted by studio soundmen; but all too often TV sound has only half a chance. A small built-in speaker with muffled tone and sound directed away from you simply won't let you hear all that you can see.

Now you can add *authentic* high-fidelity to your TV with the Jensen TV Duette, a finely engineered hi-fi speaker using the famous Jensen Duette principle of 2-way "tweeter and woofer" units in a special acoustic enclosure. It's easily installed by the serviceman in a few minutes—and you'll be amazed at the richly defined music, come-alive quality of voice and realistic picture-centered sound you now can enjoy.

And that's not all—for the Jensen TV Duette will serve also with convenience and distinction as the basic speaker for your complete hi-fi system! Think of the saving in space and cost... the convenience and utility this double-duty feature means to your home hi-fi system.

MODEL No.	STOCK No.	DESCRIPTION	LEGS	USER NET
DU-500	ST-925	Genuine Mahogany	Mahogany Wood	113.40
DU-500	ST-924	Genuine Blonde Oak	Brass-Plated Hairpin	117.60
DU-400	ST-923	Mahogany Finish	Mahogany Wood	68.10
DU-400	ST-922	Korina Finish	Korina Wood	68.10

DU-400 has direct radiator "tweeter" and oval "woofer".
DU-500 has full compression-driver horn-loaded "tweeter" and concert oval "woofer".
(See page 5 for other duette models.)

Jensen Imperial



IMPERIAL

For those who pursue the ultimate, the Imperial PR-100 bespeaks a place of honor in the distinguished home. There's a totally new, smooth sound, utterly real—the finest sound you've ever heard. Voices come to life and there's a new almost geometrical separation of instruments. A three-way system (six channels would have been used if necessary, but three were far and away the best), with l-f unit loaded by a new-design reactance-annuling trilateral-mouth horn for bass; selected compression-driver horn-loaded mid-channel with intrarange equalizer for a final touch to precise balance and coloration elimination; and superlatively smooth, space-blended supertweeter top. Higher priced it's true... but priceless in performance. Place it on a sidewall or in a corner as you choose. Individually serial numbered, laboratory tested with signed certificate and guarantee of performance, accompanied by handsome descriptive presentation brochure. Impedance 16 ohms, power rating 35 watts, 53 $\frac{1}{4}$ " H.; 32 $\frac{5}{8}$ " W.; 24 $\frac{3}{8}$ " D. Shipping Weight 260 lbs.

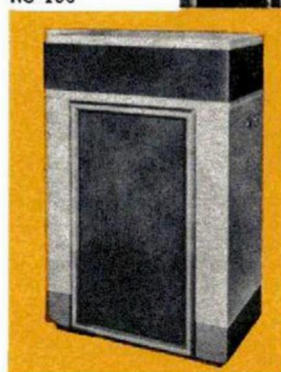
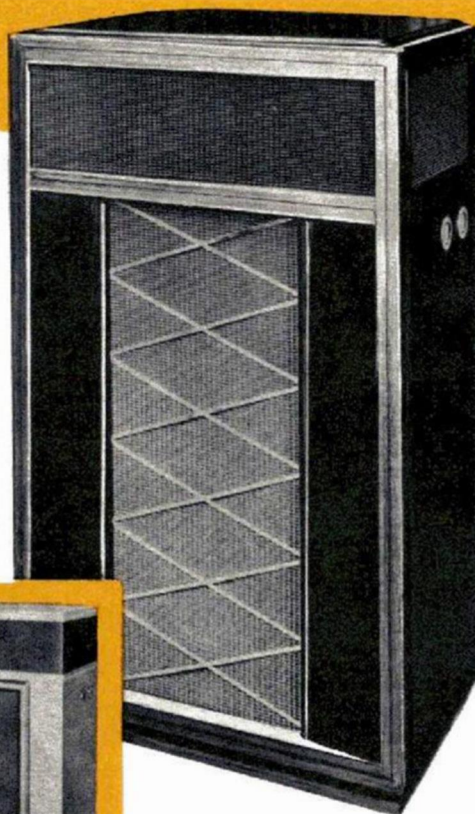
REFERENCE STANDARD

Designed by Jensen engineers for their own use as a reference standard of the highest quality of high-fidelity reproduction, the RS-100 Laboratory Reference Standard Reproducer is an important tool for sound engineers, workers in psychoacoustics and music critics who require an unusually high quality of reproduction. Cabinet is plywood attractively two-toned in blue gray. Same acoustic and electrical specifications as PR-100. Individually laboratory tested, with signed certificate and guarantee of performance, and descriptive brochure. 52 $\frac{3}{8}$ " H.; 32 $\frac{7}{8}$ " W.; 24 $\frac{1}{16}$ " D.

MODEL	STOCK No.	DESCRIPTION	USER NET
PR-100	ST-919	Selected Mahogany	721.90
PR-100	ST-918	Satin Korina	735.65
RS-100	ST-920	Laboratory Reference Standard	643.50

PR-100

RS-100



LABORATORY STANDARD

Jensen CABINETS

NEW TYPE BL 'Bass-Ultraflex' CABINETS



These new Type "BL" Cabinets are beautifully styled loudspeaker enclosures employing the new Bass-Ultraflex principle to give more true balanced bass response than previous methods employed in medium sized cabinets. They achieve a new high in flexible adaptability to mounting of coaxial or Triaxial speakers, mid-channel and high frequency units, woofers, super-tweeters, in any desired combination without sawing or cutting. All units easily mounted from rear of cabinet. Designed to fit corner, or may be placed against sidewall. L-F radiation augmented by acoustic passages opening into the sides of the cabinet. Choice of selected Mahogany or Blonde Korina veneers with genuine matching solid hardwood trim. Concealed cutouts on side for controls.

MODEL BL-250 "BL" CABINET FOR 15-INCH SPEAKERS

ST-856. Blonde Korina. 38 $\frac{5}{8}$ " x 26" x 19 $\frac{1}{16}$ " Deep. User Net.....\$167.85
ST-857. Cordovan Mahogany. Same size as ST-856. User Net.....\$164.10

MODEL BL-220 "BL" CABINET FOR 12-INCH SPEAKERS

ST-852. Blonde Korina. 30 $\frac{1}{2}$ " x 22 $\frac{5}{8}$ " x 17 $\frac{1}{16}$ " Deep. User Net.....\$118.60
ST-853. Cordovan Mahogany. Same size as ST-852. User Net.....\$114.75

ECONOMICAL 'Bass-Reflex' CABINETS



These new Type C enclosures combine acoustically correct performance with attractive modern wood cabinetry at moderate cost. A fine cabinet with Bass-Reflex for low-budget hi-fi audio systems. Models to fit 8", 12" or 15" speakers, in choice of Blonde or Mahogany finishes. Two concealed cut-outs in Model C-151, one cut-out in C-121, for easy installation of flush H-F and Level Controls, or RP-302 "Supertweeter".

MODEL C-151 "C" CABINET FOR 15-INCH SPEAKERS

ST-868. Blonde finish. 32" x 28" x 15" Deep. User Net \$59.45
ST-869. Mahogany finish. Same size as ST-868. " \$59.45

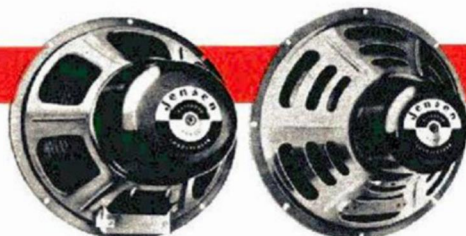
MODEL C-121 "C" CABINET FOR 12-INCH SPEAKERS

ST-866. Blonde finish. 29" x 25" x 13 $\frac{1}{2}$ " Deep. " \$50.50
ST-867. Mahogany finish. Same size as ST-866. " \$50.50

MODEL C-81 "C" CABINET FOR 8-INCH SPEAKERS

ST-864. Blonde finish. 23 $\frac{1}{2}$ " x 20" x 9" Deep. " \$36.90
ST-865. Mahogany finish. Same size as ST-864. " \$36.90

EXTENDED RANGE SPEAKERS



The selection of a direct-radiator loudspeaker from this series, in size or cost appropriate to the application, insures the best quality obtainable in a "one-way" speaker. Alternate models in the same size group differ mainly in efficiency and power rating. JENSEN Extended Range loudspeakers are ideal as replacement-improvement units for less worthy speakers in radio, television and record playing equipment. The logical choice for better reproduction on a low budget.

Nominal Size	Model No.	Stock No.	*Gap Energy Level	Dimensions, Inches			Diam., In.	Voice Coil Imped., Ohms	Power Watts	†Transformer Size	User Net
				O.D.	Depth	Baffle Cutout					
15"	P15-NX	ST-817	6.6	15 $\frac{1}{8}$	8	13 $\frac{1}{4}$	1 $\frac{1}{2}$	6-8	18.0	1" x 1"	63.30
	P12-NX	ST-819	6.6	12 $\frac{1}{4}$	7	10 $\frac{1}{2}$	1 $\frac{1}{2}$	6-8	16.0	1" x 1"	48.50
12"	P12-RX	ST-885	2.2	12 $\frac{1}{8}$	6 $\frac{1}{16}$	10 $\frac{1}{2}$	1	6-8	11.0	$\frac{7}{8}$ " x $\frac{7}{8}$ "	17.05
	P12-SX	ST-821	1.5	12 $\frac{1}{8}$	6 $\frac{1}{16}$	10 $\frac{1}{2}$	1	6-8	9.0	$\frac{7}{8}$ " x $\frac{7}{8}$ "	15.60
10"	P10-SX	ST-823	1.5	10 $\frac{1}{8}$	5 $\frac{1}{4}$	8 $\frac{3}{4}$	1	6-8	8.0	$\frac{3}{4}$ " x $\frac{3}{4}$ "	14.50
8"	P8-RX	ST-887	2.2	8 $\frac{1}{8}$	4	6 $\frac{3}{4}$	1	6-8	8.0	$\frac{3}{4}$ " x $\frac{3}{4}$ "	11.70
	P8-SX	ST-825	1.5	8 $\frac{1}{8}$	3 $\frac{9}{16}$	6 $\frac{3}{4}$	1	6-8	7.0	$\frac{3}{4}$ " x $\frac{3}{4}$ "	10.30
6"	P6-TX	ST-826	1.1	6 $\frac{1}{16}$	3 $\frac{3}{16}$	5 $\frac{1}{4}$	$\frac{3}{4}$	3-4	5.0	$\frac{5}{8}$ " x $\frac{5}{8}$ "	6.95
5"	P5-TX	ST-827	1.1	5	2 $\frac{1}{16}$	4	$\frac{3}{4}$	3-4	4.0	$\frac{1}{2}$ " x $\frac{1}{2}$ "	6.70

*Million of Ergs.

†Size Recommended.

JENSEN TECHNICAL MONOGRAPHS



Everyone interested in the reproduction of sound—engineer, tradesman, instructor, student or layman—should own these five Monographs. Published by the JENSEN Technical Service Department in the interest of improved sound reproduction, these booklets are the first five numbers of a series. Up-to-date in factual information, replete with useful charts, graphs and tables, they supply a world of data, heretofore unobtainable, to guide in the selection, installation and operation of loud speakers. You will want not only these five numbers but the rest of the series as announced from time to time. If your jobber does not have them in stock, order direct from Copper Wire Products Limited, 300 Campbell Ave., Toronto, sending remittance of 25c in coin, stamps or money order for each Monograph desired.

Jensen High Fidelity Loudspeakers and accessories are sold by hi-fi dealers in all principal cities in Canada. If your dealer does not carry the Jensen line, write us and we will be glad to tell you the nearest place to buy. Remember, Jensen has been the world's quality standard for more than a quarter-century.

COPPER WIRE PRODUCTS LIMITED

300 CAMPBELL AVE., TORONTO 9, ONTARIO

SALES OFFICES: 1500 ST. CATHERINE ST. W. MONTREAL, QUE.

RADIOVISION SALES LTD. 325 TENTH AVE. W. CALGARY, ALTA.

492 SOMERSET ST. W. OTTAWA, ONT.