

Jensen

Authentic HIGH FIDELITY LOUDSPEAKERS

REPRODUCERS • COMPONENTS • 2-WAY & 3-WAY SPEAKERS • SPEAKER KITS • CABINETS • EXTENDED RANGE

World's Quality Standard for more than a Quarter Century

In the search for pure high fidelity, completely authentic, with smooth coverage of the complete frequency range from the lowest bass to upper limits of audibility, Jensen designed the RS-100 Laboratory Reference Standard Reproducer (see below) for use as a standard of comparison in high fidelity. For those who pursue the ultimate, the very same reproducer is offered here as the Imperial PR-100 in cabinetry that bespeaks a place of honor in the distinguished home. There's a totally new, smooth sound, utterly real—undoubtedly the finest sound you've ever heard. Voices come to life and there's a new almost geometrical separation of instruments. The I-f unit is loaded by a new-design reactance-annulling trilateral-mouth horn for bass; selected compression-driver horn-loaded mid-channel with intrarange equalizer for a final touch to precise balance and coloration elimination; and a superlatively smooth, space-blended supertweeter top. Expensive to be sure . . . but priceless in performance. Place it on sidewall or in a corner as you choose. Individually serial numbered, laboratory tested with signed certificate and guarantee of performance. Impedance 16 ohms, power rating 35 watts. 54 $\frac{1}{4}$ " H.; 32 $\frac{3}{8}$ " W.; 24 $\frac{3}{8}$ " D. Shipping Weight, 225 lbs.

PR-100 "IMPERIAL" REPRODUCER

Selected Mahogany. Net Price. \$570.00
Satin Blonde Korina. Net Price. \$580.00

Designed by the Jensen engineering staff for their own use as a reference standard of the highest quality of high-fidelity reproduction, the RS-100 Laboratory Reference Standard Reproducer is a new and important tool for sound engineers, workers in psychoacoustics and music critics who require an unusually high quality of reproduction. Some music lovers and audiophiles will undoubtedly want to own an RS-100. Cabinet is plywood attractively two-toned in blue gray. Same acoustic and electrical specifications as PR-100. Individually laboratory tested with signed certificate and guarantee of performance and descriptive brochure. 52 $\frac{5}{8}$ " H.; 33" W.; 25 $\frac{1}{2}$ " D. Shipping Weight, 215 lbs.

RS-100 LABORATORY REFERENCE STANDARD REPRODUCER

Net Price. \$475.00

Outperforms any comparable speaker system. Bass response enhanced with Bass Ultraflex enclosure to give more true balanced response than previous methods. Three completely independent reproducers divide the frequency range (RP-302, RP-201, P15-LL). Individual controls on the side of cabinet for exact adjustment of response balance, presence and brightness. Choice of selected Mahogany or Blonde Korina veneers with genuine matching hardwood trim. Each TRI-PLEX is individually tested and is accompanied by a certificate and guarantee of performance. Impedance, 16 ohms. Power Rating: 35 watts. 38 $\frac{5}{8}$ " H.; 25 $\frac{1}{8}$ " W.; 19 $\frac{3}{8}$ " D. Shipping Weight, 120 lbs.

MODEL TP-200 "TRI-PLEX" REPRODUCER

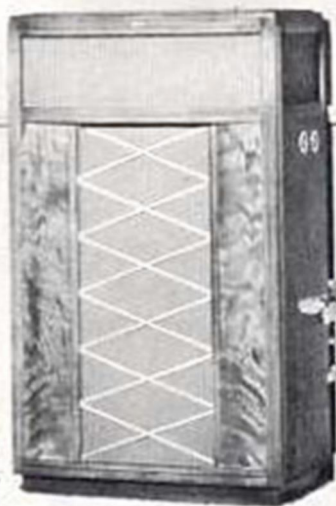
Selected Mahogany. Net Price. \$347.00
Satin Blonde Korina. Net Price. \$352.00

A true two-way system with separate woofer and tweeter—high fidelity reproduction in compact enclosure to fit even the most crowded living space. Finer music reproduction cannot be approached except at far greater cost. I-F unit is the P12-NL, 12" woofer especially designed for this system. In combination with the Bass Ultraflex cabinet, the system gives full bass response. RP-102 H-F unit handles frequencies above 2000 cycles, providing exceptional smoothness and approaching the upper limits of audibility. H-F Balance Control on cabinet side. You can step up performance easily by converting to a three-way system whenever you wish. KTX-1 Range Extender Kit can be installed without cabinet alterations. Available in selected Mahogany or Blonde Korina veneers. Reproducer is fully assembled and carefully tested at the factory. Impedance, 16 ohms. Power rating, 25 watts. 30 $\frac{1}{2}$ " H.; 22 $\frac{3}{8}$ " W.; 17 $\frac{1}{8}$ " D. Shipping Weight 65 lbs.

MODEL CT-100 "CONCERTO" TWO-WAY REPRODUCER

Selected Mahogany. Net Price. \$189.50
Satin Blonde Korina. Net Price. \$194.50

Imperial PR-100



RS-100 LABORATORY
STANDARD

Tri-Plex TP-200



Concerto CT-100





CN-82

CN-83

CONTEMPORARY

2-WAY and 3-WAY LOUDSPEAKER SYSTEMS

These new Contemporary reproducers will thrill you with their elegant simplicity of line and form, executed in fine furniture crafted genuine hardwood veneers, combined with performance which sets a new high standard in modestly dimensioned cabinetry. They are neither too small nor too large for distinguished appearance in a room of any size, and their clean lines with subtle decorative touches make them at home in a wide range of decor schemes. Woods are available in your choice of hand rubbed Selected Mahogany or Blonde Oak. Grille treatment is complimentary textured cloth combining handsome appearance and excellent acoustical properties.

Cabinet acoustics have been carefully coordinated with the characteristics of the heavy duty 8" woofer to achieve more clean extended bass than has been expected in a high efficiency speaker system with these enclosure dimensions (both two-way and three-way systems will give adequate listening levels with one watt or so of input). Duct-loaded Bass Ultraflex is used for bass range extension, with port opening at front near the floor for maximum loading of the woofer. Size overall: 24 1/4" H.; 19" W.; 12 3/8" D. Power rating, 20 watts. Impedance, 8 ohms.

CONTEMPORARY 2-WAY SYSTEM

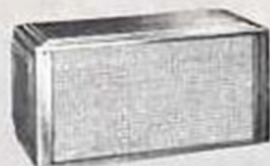
An authentic high fidelity two-way system with heavy duty 8" woofer and compression driver horn loaded tweeter. Reproduction is especially smooth, and free from coloration, with high response approaching the limits of audibility. Makes an excellent modestly priced "starter" system which is easily converted later to a three-way system with the KTX-1 Range Extender Kit without cabinet modifications. Comes fully assembled, wired and factory tested. Shipping Weight, 31 lbs.

MODEL CN-82	
Selected Mahogany, Net Price.....	\$88.75
Blonde Oak, Net Price.....	\$89.75

CONTEMPORARY 3-WAY SYSTEM

For those who want the ultimate response range in the Contemporary design, the three-way version is offered. Similar to the CN-82, except range from 4000 cycles to beyond limits of audibility is smoothly reproduced by means of an RP-302 Super-tweeter in conjunction with an A-402 full Crossover Network. M-F and H-F balance controls in rear of unit. Fully assembled, factory wired and tested. Shipping Weight, 32 3/4 lbs.

MODEL CN-83	
Selected Mahogany, Net Price.....	\$128.75
Blonde Oak, Net Price.....	\$129.75



DU-300



DU-201



DU-202



Duette Treasure Chest

Gives the typical presence and performance of true two-way system. Incorporates a special 8-inch woofer and compression driver tweeter in an unusually compact scientifically designed acoustic enclosure. Capable of adequate bass reproduction, even at low levels. Handsomely styled chest design for table or bookshelf. For a free-standing piece, add the graceful, contemporary wrought iron legs (not furnished—must be ordered separately). Ideal for small space hi-fi system. Impedance 4 and 8 ohms, power rating 20 watts maximum. 11 1/2" H.; 23 1/4" W.; 10" D. Shipping Weight, 23 lbs.

DU-300 DUETTE "TREASURE CHEST" REPRODUCER

Choice of Mahogany or Blonde Oak Veneers, Net Price.....	\$76.50
Set of Wrought Iron Legs, Net Price.....	\$ 4.25

Duette REPRODUCER

The original Duette. High fidelity in a small package for use on table, in bookshelves or on the floor, either on its side or standing on end. Ideal for improving the performance of portable phonographs, radios or TV sets. Remarkable power handling capacity and unmistakable presence of the true two-way system. Comprises a special 8-inch woofer plus a multi-cell horn loaded compression driver tweeter, with built-in frequency division system. Rich, attractive burgundy pigskin grained Fabrikoid finish with contrasting front panel and copper-toned trim. 11 1/2" H.; 23 1/4" W.; 10" D. Shipping Weight, 25 lbs.

DU-201 "DUETTE" REPRODUCER

Net Price.....	\$62.50
----------------	----------------

Duette PORTABLE

The first truly portable two-way loudspeaker system. Ideal for use with tape recorders, portable record players, electronic musical instruments, for lecturers, musicians and hi-fi listeners. Lid holds 25-foot cable with plug. "Carry tested" handle on end of case. Gives full performance of the true two-way system with special 8-inch woofer and multi-cell horn loaded compression driver tweeter. Built-in frequency division system. Two rugged receptacles on back of case for 4- or 8-ohm output as needed. 20 watts. 11" H.; 24 1/4" W.; 10" D. Shipping Weight, 26 lbs.

DU-202 DUETTE "PORTABLE" REPRODUCER

Black Leatherette case with contrasting gray panel, Net Price....	\$77.50
-------------------------------------------------------------------	----------------

3-WAY SYSTEM COMPONENTS**P15-LL LOW FREQUENCY UNIT**
(SEE ALSO P12-NL)

Rugged 15-in woofer handles bass region up to 600 cycles (2000 cycles in two-way system). Edge damping. Resonance, 37 cycles. Power rating, 35 watts. Impedance, 16 ohms. Shipping Weight, 18 lbs. Net Price... **\$56.80**

RP-201 HIGH FREQUENCY UNIT

Reproduces the range from 600 to 4000 cycles as the mid-channel in a three-way system. Driver unit loaded by cast aluminum Hypex* horn. Coverage angle 115°. Impedance 16 ohms. Power rating with A-61 network, 35 watts speech and music signal input to system. Shipping Weight, 9 lbs. Net Price... **\$42.60**

RP-302 ULTRA HIGH FREQUENCY UNIT

Covers the top of the range from 4000 cycles to the highest audible frequencies with unexcelled smoothness and freedom from distortion. Coverage angle 120°. Impedance, 16 ohms. Power rating with A-402 network, 35 watts speech and music signal input to system. Mounts in 1 1/2" hole in baffle or on bracket. Satin brass finish. Shipping Weight, 3 lbs. Net Price... **\$33.60**

A-402 4000 CYCLE CROSSOVER NETWORK

Two-channel type; high-pass transmits everything above 4000 cycles, low-pass everything below this frequency. 180° constant-resistance type. 4 1/2" high, 3 1/4" wide, 4 1/2" deep. Shipping Weight, 3 lbs. Net Price... **\$10.90**

A-61 600 CYCLE CROSSOVER NETWORK

Sends frequencies above 600 cycles to A-402 for further division: below 600 cycles to the P15-LL unit. Two-channel, 180° constant-resistance type, with 12 db/octave attenuation outside pass band. 5 1/4" high, 7" wide, 4 1/4" deep. Shipping Weight, 5 1/4 lbs. Net Price... **\$19.75**

*T.M. reg. Jensen Mfg. Co.

2-WAY SYSTEM COMPONENTS**P12-NL LOW FREQUENCY UNIT**
(SEE ALSO P15-LL)

New rugged 12" woofer especially designed for two-way systems. Handles bass up to 2000-cycle crossover. Impedance, 16 ohms. Power rating, 25 watts. Shipping Weight, 10 lbs. Net Price... **\$36.50**

RP-102 HIGH FREQUENCY UNIT

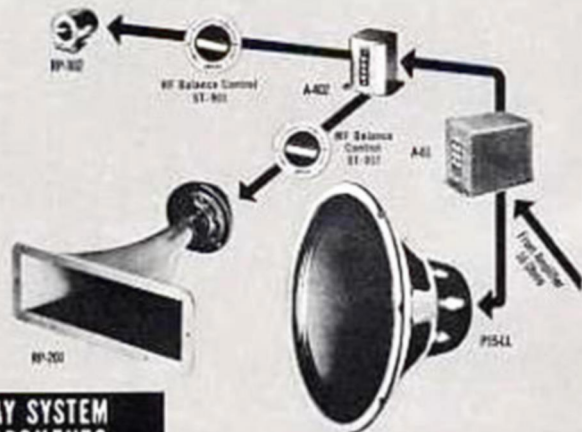
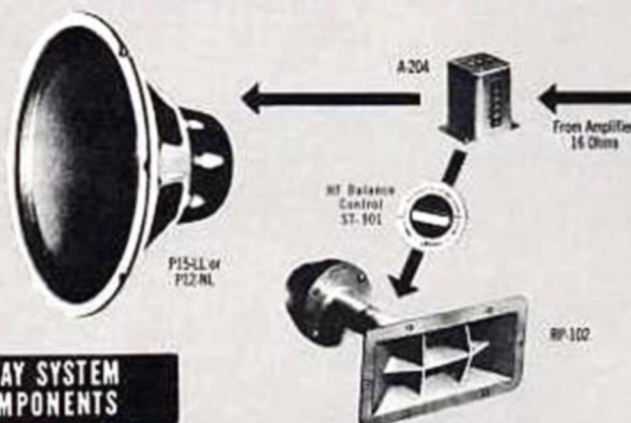
A new advanced design tweeter for use in two-way systems crossing over at 2000 cycles. Reproduces from 2000 cycles to extremely high frequencies with smooth response. Impedance, 16 ohms. Power rating, 35 watts when used with A-204 network. Shipping Weight, 6 1/2 lbs. Net Price... **\$28.35**

A-204 2000 CYCLE CROSSOVER NETWORK

Two-channel type. High-pass section transmits everything above 2000 cycles; low-pass, everything below 2000 cycles. 180° constant-resistance type. 4 1/2" high, 3 1/4" wide, 4 1/2" deep. Shipping Weight, 3 1/4 lbs. Net Price... **\$13.00**

CONTROLS

- H-F BALANCE CONTROL, ST-901.** For adjusting balance of HF unit. 16 ohms impedance. Net Price... **\$5.00**
- M-F BALANCE CONTROL, ST-917.** For adjusting balance of mid-channel unit. 16 ohms impedance. Net Price... **\$3.25**
- LEVEL CONTROL, ST-880.** For controlling overall level at the speaker. 16 ohms impedance. Net Price... **\$5.25**
- Z-3422 AUTOTRANSFORMER.** For matching any two of 16/8/4 ohm impedances. Net Price... **\$5.15**

**3-WAY SYSTEM COMPONENTS****2-WAY SYSTEM COMPONENTS****Duette TABLE****THE SPEAKER THAT DOUBLES AS FURNITURE**

A genuine high fidelity loudspeaker you can be proud of, in beautiful table form. Serves as a useful chairside or coffee table, adds a decorator touch to your home. The versatile Duette table serves as the basic speaker for a complete hi-fi system. Handy switch lets you transfer the Duette from hi-fi system to TV set for an amazing improvement in sound quality. All models incorporate the famous Jensen Duette principle in a true two-way system. Has two different specially-designed speakers in woofer and tweeter combination like more expensive speaker systems.

DU-500 Duette TABLE

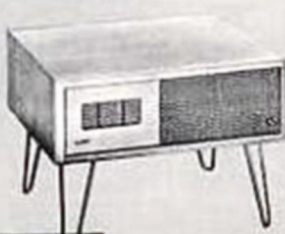
Combining the finest furniture craftsmanship with advanced acoustic design, the DU-500 Duette sets a new high standard of beauty and performance for compact hi-fi loudspeakers. Selected genuine hardwood veneer, matching solid hardwood trim with fine lines and trim proportions, choice of Blonde Oak or Ribbon Striped Mahogany. Genuine gold plated insignia, grille bars and knob. Speaker complement consists of a special 6" x 9" oval woofer plus a full compression driver Hypex horn loaded tweeter with frequency division system—a truly authentic hi-fi speaker system that will serve with distinction for all your hi-fi needs. Size: 24" W. by 22" D.; top 17 1/4" above floor. Impedance, 4 ohms; power rating 20 watts.

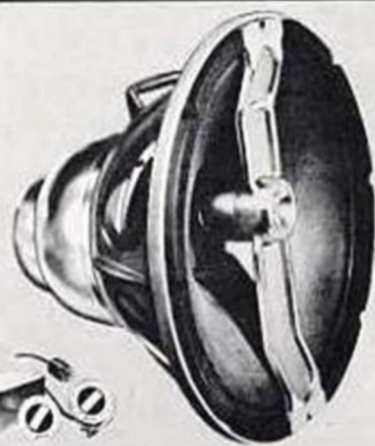
- DU-500.** Blonde Oak, brass hairpin legs. Shipping Wt., 35 lbs. . . . **\$85.50**
Ribbon striped mahogany, wood legs. Shpg. Wt., 31 lbs. **\$82.50**

DU-400 Duette TABLE

An expertly engineered, finely balanced hi-fi speaker system using two different specially designed speaker units in woofer and tweeter combination for full range reproduction. Brings a new dimension to sound . . . gives you authentic high fidelity for records, tape or radio. Size: 24" W.; 22" D.; 17 1/4" H. Impedance, 4 ohms. Power rating, 15 watts. Has 6" x 9" oval woofer and 3" tweeter. Choice of attractive simulated finishes on genuine plywood; matching wood legs with brass ferrules. Shipping Weight, 28 lbs.

DU-400. Korina Blonde, or Ribbon Mahogany simulated finishes. **\$49.50**

**DU-500****DU-400**



G-610 TRIAXIAL®

The only true three-way unitary speaker with three independently driven elements, each covering a portion of the range, plus Crossover and Control network for frequency division at 600 and 4000 cycles. Heavy duty curvilinear diaphragm unit for lows, compression driver unit for middle range and compression driver h-f tweeter at front for high end. Smoothly covers widest range available today. Power rating, 35 watts; impedance, 16 ohms. Mounts in any cabinet for 15" speaker. Baffle opening, 13 1/4"; OD, 15 3/8"; depth 10 3/4". Shipping Weight, 50 lbs.

Net Price..... \$252.75

TRANSFORMERS FOR G-610

Hi-fi units, mounting directly on network chassis, with plug-in connections for alternate impedances.

MODEL T-201. 4 and 8 ohms impedance. Net Price..... \$12.35

MODEL T-202. 500-600 ohms impedance. Net Price..... \$12.35

H-530

2-way coaxial

A true two-way system with two separate and distinct loudspeakers with expertly coordinated performance. In wide range extension, smoothness and fine balance of response, this new coaxial is a milestone in speaker engineering. Highly efficient 15" l-f unit. Upper channel is a precision compression driver horn loaded unit perfectly matched to a multicellular horn to reproduce an unusually wide frequency range above 2000 cycles to the limits of audibility. Complete with separate two-channel 180° constant-resistance type crossover network with 12 db/octave attenuation outside pass band. H-f balance control for precise adjustment of balance without shrillness. Complete with connecting cable harness. Impedance, 16 ohms. Power rating, 30 watts. Baffle opening, 13 1/4"; OD, 15 3/8"; depth, 10 1/2". Shipping Weight, 25 lbs. Net Price..... \$129.50

H-520

2-way coaxial

An economical 15" true coaxial speaker with the smoothness, balance and wide range found only in advanced-design two-way systems. The superior presence and the unusual cleanness and thrilling realism of music reproduction cannot be approached except at far greater cost. Compression driver unit loaded by a six-cell horn reproduces frequencies above 2000 cycles. New improved full frequency dividing network. Highly efficient 15" l-f unit. H-f balance control permits precise adjustment of h-f output for exact balance with l-f output for brilliant reproduction without shrillness. Control equipped with 36" cable, satin brass flush mounting escutcheon cup and bar knob. Impedance, 16 ohms. Power rating, 25 watts. Baffle opening, 13 1/4"; OD, 15 3/8"; depth, 9 3/4". Shipping Weight, 16 lbs. Net Price..... \$79.50

H-222

2-way coaxial

The most popular true coaxial loudspeaker today with added improvements to thrill you! Especially designed to achieve advanced performance where size is limited by enclosure restrictions . . . or your budget. Compression driver tweeter and six-cell h-f horn. Full two-channel dividing network. Power rating, 25 watts. Impedance, 16 ohms. Baffle opening, 10 1/2"; OD, 12 3/8"; depth, 8 3/4". Has H-F Balance Control on 36" cord. Shipping Weight, 13 lbs. Net Price..... \$58.50

K-310A

2-way coaxial

A fine low-cost true two-way 15" high fidelity speaker that will outperform many speakers priced at substantially higher prices. Perfectly matched direct radiator l-f unit covers the upper portion of the frequency range; h-f balance control provides proper balance of high frequencies. Integral frequency division system. Power rating, 16 watts. Impedance, 16 ohms. Baffle opening, 13 1/4"; OD, 15 3/8"; depth, 8 1/8". Shipping Weight, 12 lbs. Net Price..... \$39.75

K-210

2-way coaxial

Provides the excellent high fidelity reproduction of a coaxial two-way system in a unit of small size and amazingly low cost. Matched direct radiator l-f unit; provision for easily adding ST-901 H-F Balance Control. Compactness and low cost make it ideal for modernizing TV and radio sets equipped with 12-inch single-unit speakers. Built-in frequency-dividing system. Power rating, 12 watts. Impedance, 8 ohms. Baffle opening, 10 1/2"; OD, 12 1/8"; depth, 6 3/16". Shipping Weight 7 lbs. Net Price..... \$27.50

K-80

2-way coaxial

A new, economical true two-way coaxial speaker with electrically and acoustically independent woofer and tweeter units. Excellent wherever a small hi-fi speaker with superior performance is needed. Electrical crossover at 3000 cycles to h-f unit with diffraction plate for smooth, wide angle high frequency response. Power rating, 8 watts; impedance 8 ohms; baffle opening 6 3/4"; OD, 8 1/8"; depth, 3 1/2". Shipping Weight, 2 1/2 lbs. Net Price..... \$16.75



EASY TO BUILD HI-FI SPEAKER SYSTEMS WITH JENSEN LOUDSPEAKER KITS

Now you can have famous Jensen authentic high fidelity loudspeaker performance plus the fun and satisfaction of building your own choice of cabinet or built-in unit for your home. You get the same high quality loudspeaker matched components used in Jensen's factory assembled complete reproducers; you "do-it-yourself" and save. Just select the Jensen loudspeaker kit that best fits your needs and budget—follow simplified plans—and enjoy fine sound reproduction.

Jensen speaker kits are complete—every Jensen authentic high fidelity loudspeaker kit comes packed in a single carton with all the matched components, frequency division units, controls, mounting brackets and wiring for easy installation in your own free-standing cabinet or built-in music area. Detailed constructional plans help you build the acoustically correct enclosure.

No technical skill is required. You build the enclosure with confidence that your system will give the excellent reproduction you would expect from Jensen loudspeakers.

36 PAGE JENSEN MANUAL 1060 OF ENCLOSURE DESIGNS FOR "DO-IT-YOURSELF" SPEAKER SYSTEMS

Select the kit and cabinet you want from this complete manual of do-it-yourself designs. Complete instructions for building self-contained or built-in single speaker and two-way and three-way speaker systems; "Duette", Bass-Ultraflex and Back-Loading Folded Horn cabinets.

You can build an authentic hi-fi speaker system of your own selection—from the famous Jensen three-way Imperial to a compact low-cost "Duette" two-way system. Simplified detail enclosure drawings, parts lists, speaker data, exploded views, circuit diagrams and wiring instructions—all planned to help you build your own Jensen speaker system.

JENSEN MANUAL 1060. Net Price 50¢



KT-31 IMPERIAL KIT

Three-way system. The ultimate in performance. Specially designed 15" woofer, compression type mid-range and super-tweeter units, 600- and 4000-cycle crossover networks, intrarange equalizer, special controls, brackets, cables. Recommended enclosure 25 cu. ft. in back-loading folded-horn. 16 ohms. 35 watts. Net... **\$184.50**



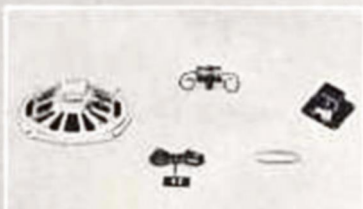
KT-21 CONCERTO-15 KIT

Two-way system. An outstanding system with 15" woofer and compression type tweeter, 2000-cycle crossover network and balance control, bracket and cables. 10 cu. ft. enclosure suggested. 16 ohms. 30 watts. Net Each..... **\$99.50**



KDU-10 TREASURE-CHEST DUETTE KIT

Two-way system. Special 8" woofer, compression driver tweeter and frequency division for compact reproducer (1 1/2 cu. ft. Duette enclosure or 2 1/2 cu. ft. Bass Ultraflex type). Includes wiring materials. 8 ohms. 20 watts. Net... **\$24.75**



KDU-12 BUDGET DUETTE KIT

Two-way system. For maximum results at lowest cost. May be installed in table or 1 1/2 cu. ft. regular Duette or in 2 1/2 cu. ft. Bass Ultraflex enclosures, 6" x 9" woofer, direct radiator tweeter frequency dividing unit plus wiring materials. 3-4 ohms, 15 watts. Net Each..... **\$10.50**

KT-32 TRI-PLEX KIT

Three-way system. Superlative performance in moderate space; approximately 10 cu. ft. suggested in Bass Ultraflex type enclosure. 15" woofer, compression type mid-range and super-tweeter units. 600- and 4000-cycle crossover networks, intrarange equalizer, controls, brackets, cables, 16 ohms, 35 watts. Net Each.... **\$169.50**



KT-22 CONCERTO-12 KIT

Two-way system. Excellent performance in scaled-down size (recommended enclosure as small as 6 cu. ft.). Has same components as KT-21 kit except has 12" woofer. 16 ohms. 25 watts. Net Each... **\$73.00**



KDU-11 TABLE DUETTE KIT

Two-way system. Specially designed for low Table Duette enclosure suitable for chairside use or for supporting table TV set. Heavy duty 6" x 9" woofer, compression driver tweeter, frequency division unit, wiring materials. 3-4 ohms. 20 watts. Net Each..... **\$23.75**

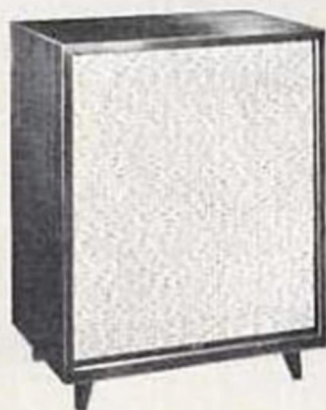


KTX-1 RANGE EXTENDER SUPERTWEETER KIT

Smooth, clean highs from 4000 cycles to limits of audibility. Fidelity greatly enhanced when added to any single unit, coaxial or two-way system. Complete with crossover network, balance control and cable. For systems rated up to 35 watts. Net Each..... **\$43.75**



Jensen-designed Cabinet Basic Cabinet Kits and cabinet Dress Kits are available for most of the above Jensen Speaker Kits. Ask your Dealer or write Cabnart, 99 North 11th St., Brooklyn 11, N. Y.



**CONTEMPORARY
BASS-ULTRAFLEX CABINETS**

Here is the same fine furniture cabinet used for the Contemporary reproducers (see page 2), available for the speaker or system of your choice. Front duct loaded Bass Ultraflex acoustic design. Will accommodate II-80 8" coaxial speaker or any Extended Range 8" speaker. Excellent for KDU-10 Speaker Kit for two-way system; KTX-1 Range Extender Supertweeter Kit may be installed at any time to make a three-way system. All necessary cut-outs for speakers and controls are provided. Dimensions: 24 1/4" H.; 19" W.; 12 3/8" D. Shipping Weight, 25 3/4 lbs.

BL-80 CABINET

Blonde Oak. Net Price..... \$58.00
Selected Mahogany. Net Price.... \$57.00



TYPE BL "BASS ULTRAFLEX" CABINETS

Beautifully styled enclosures with the new Bass-Ultraflex principle. A new high in flexibility for mounting of 12-inch and 15-inch loudspeakers, mid-channel and high frequency units, woofers and tweeters, in any desired combination without sawing or cutting. Designed for use in corner or against sidewall. Side cut-outs for controls.

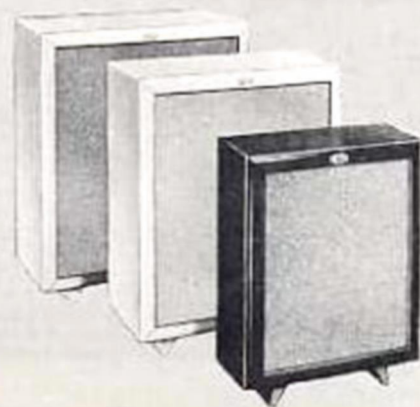
**MODEL BL-250 CABINET
FOR 15-INCH SPEAKERS**

38 3/8" x 25 3/8" x 19 3/8" deep.
Blonde Korina. Net Price..... \$130.90
Mahogany. Net Price..... \$128.00

**MODEL BL-220 CABINET
FOR 12-INCH SPEAKERS**

30 1/2" x 22 3/8" x 17 3/8" deep.
Blonde Korina. Net Price..... \$92.50
Mahogany. Net Price..... \$89.50

BL-250 will accommodate KT-32, KT-21 and KTX-1 Kits;
BL-220 takes KT-22 and KTX-1 Kits.



**ECONOMICAL "BASS REFLEX"
CABINETS TYPE C**

Acoustically correct performance plus attractive wood cabinetry at moderate cost. A fine cabinet with bass-reflex for low-budget hi-fi audio systems. Two concealed cut-outs in Model C-151, one cut-out on Model C-121 for installation of speaker controls. Your choice of simulated mahogany or blonde korina finishes.

**MODEL C-151
FOR 15-INCH SPEAKERS**

32" x 28" x 15" deep.
Net Price..... \$46.35

**MODEL C-121
FOR 12-INCH SPEAKERS**

20" x 25" x 13 1/2" deep.
Net Price..... \$39.40

**MODEL C-81
FOR 8-INCH SPEAKERS**

23 1/2" x 20" x 9" deep.
Net Price..... \$28.75



EXTENDED RANGE SPEAKERS

The selection of a direct-radiator loudspeaker from this series, in size or cost appropriate to the application, insures the best quality obtainable in a "one-way" speaker. Alternate models in the same size group differ mainly in efficiency and power rating. JENSEN Extended Range loudspeakers are ideal as replacement-improvement units for less worthy speakers in radio, television and record playing equipment. The logical choice for better reproduction on a low budget.

Nominal Size	Model No.	Stock No.	*Gap Energy Level	Dimensions, Inches			Voice Coil			†Transformer Size	Net Each
				O.D.	Depth	Baffle Cutout	Diam., In.	Imped., Ohms	*Power Watts		
15"	P15-NX	ST-817	6.6	15 3/4	8	13 3/4	1 3/4	6-8	18.0	1" x 1"	\$46.05
12"	P12-NX	ST-819	6.6	12 3/4	7	10 1/2	1 3/4	6-8	10.0	1" x 1"	35.25
	P12-RX	ST-885	2.2	12 3/4	6 1/2	10 1/2	1	6-8	11.0	3/4" x 3/4"	12.40
	P12-SX	ST-821	1.5	12 3/4	6 1/2	10 1/2	1	6-8	9.0	3/4" x 3/4"	11.35
10"	P10-SX	ST-823	1.5	10 3/4	5 3/4	8 3/4	1	6-8	8.0	3/4" x 3/4"	10.54
8"	P8-RX	ST-887	2.2	8 3/4	4	6 3/4	1	6-8	8.0	3/4" x 3/4"	8.50
	P8-SX	ST-825	1.5	8 3/4	3 3/4	6 3/4	1	6-8	7.0	3/4" x 3/4"	7.48
6"	P6-TX	ST-826	1.1	6 1/4	3 1/4	5 3/4	3/4	3-4	5.0	5/8" x 5/8"	5.05
5"	P5-TX	ST-827	1.1	5	2 1/4	4	3/4	3-4	4.0	1/2" x 1/2"	4.90

*Millions of Ergs.

†Size Recommended.

Jensen MANUFACTURING COMPANY
Division of The Moler Company

6601 S. LARAMIE AVE., CHICAGO 38, ILLINOIS, U.S.A.
In Canada: COPPER WIRE PRODUCTS LTD., Licensee