

INSTRUCTIONS

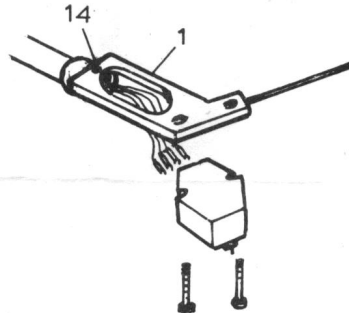
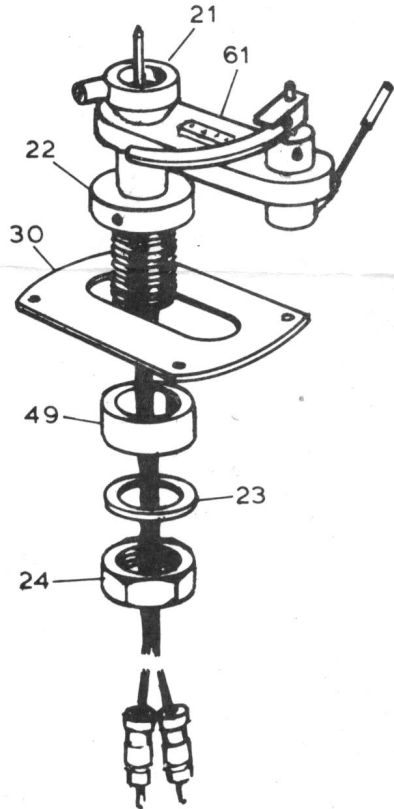
HADCOCK GH 228 'D' TYPE ARM

FITTING THE ARM BASE ASSEMBLY

1. Determine the position of the base support (22) by scribing an arc 8.38" (212.85mm) from the turntable spindle with template A.
Having marked the position drill a 5/8" (15.87 mm) dia. hole through the turntable mounting board. Make sure that the hole position allows free movement of the arm and enough clearance, when the lid of the turntable is closed.

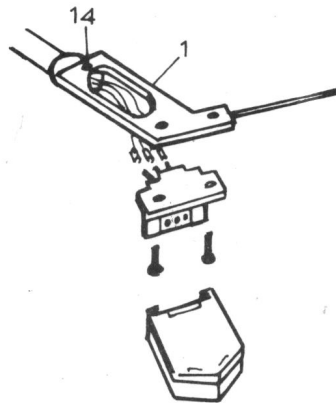
FITTING THE ARM BASE ASSEMBLY WITH THE SME TYPE BASE PLATE

Push the phono plugs through the SME type base plate (30) then through the spacer (49) rubber washer (23) then singly through the nut (24). Determine the position of the pivot pin by using template A.



FITTING THE CARTRIDGE TO THE HEADSHELL

2. First slacken the screw (14) using the smaller allen key provided and the headshell may be removed from the arm tube to make it easier to fit the cartridge. Select screws of suitable length and fit the cartridge to the headshell(1) and tighten the screws into the threaded holes.



FOR DECCA CARTRIDGES

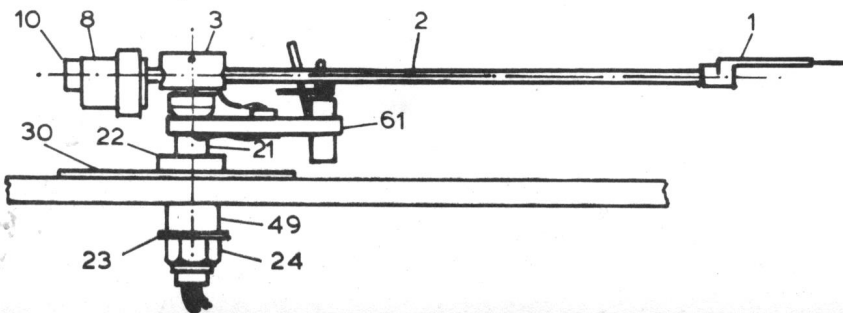
3. Remove the cartridge from the bracket keeping the stylus guard in position. Assemble the bracket with the shortest screws provided as illustrated.

FITTING THE HEADSHELL TO THE ARM

4. Having attached the cartridge to the headshell carefully push the fine wires through the headshell and attach the cartridge tags as follows:

RED - RIGHT
WHITE- LEFT
GREEN- RIGHT GROUND
BLACK- LEFT GROUND

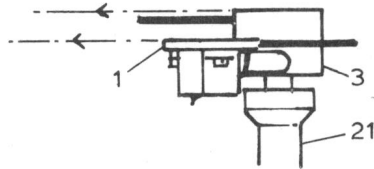
Do not solder direct to the cartridge pins. For Decca London cartridges the green cable tag may be connected direct to the black cable.
When attaching the headshell to the arm tube make sure that the allen screw (14) is slack.



- Having fitted the cartridge to the headshell and to the top arm assembly carefully place the arm locating the bearing on to the pivot pin.

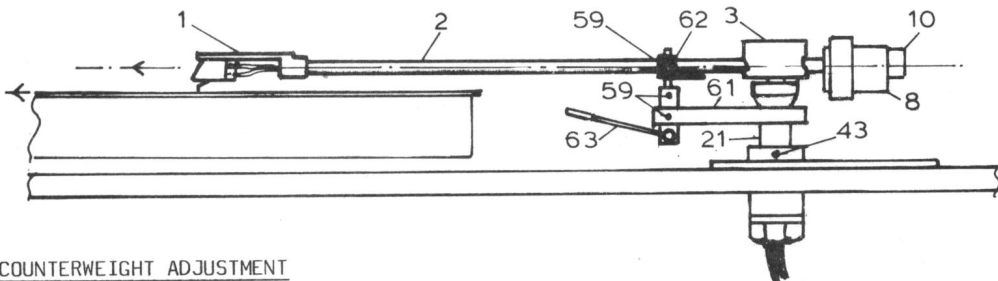
HEADSHELL ADJUSTMENT

- Make sure that the top face of the bearing housing (3) is set level with the top face of the headshell.
Place the template over the turntable spindle and adjust the headshell forwards or backwards backwards along the arm tube until the cartridge is parallel with the lines on the template with the stylus positioned on the mark.



ARM HEIGHT ADJUSTMENT

- Adjust the pivot pillar (21) height using the larger allen key in the screw (43), so that the arm tube is parallel with the record surface, when viewed from the side.



COUNTERWEIGHT ADJUSTMENT

- Make sure that the counterweight/sleeve combination is correct. The main counterweight (8) may be used as follows:

Main counterweight (8)	:	3 - 5 grm	cartridge weight
" "	(8)+(9B):	5 - 8 grm	" "
" "	(8)+(9A):	8 -10 grm	" "
" "	(8)+(9) :	10-13 grm	" "

BALANCE ADJUSTMENT

- The main counterweight (8) can now be set in balance by adjusting the nut (10) until the arm is in balance. The required weight can now be set, so that approximately four complete turns of the nut (10) should give 1 grm. at the stylus point. The ideal position is to have the weights as close as possible to the bearing housing (3).

Position a small flat mirror on the turntable mat and carefully lower the stylus on to it. A plain section of a record may be used if preferred.

The reflection should show if the main counterweight (8) is set correctly. Lift the stylus off the surface. To correct any error twist the main counterweight (8) until the headshell upper face is parallel with the record surface, when viewed from the front.

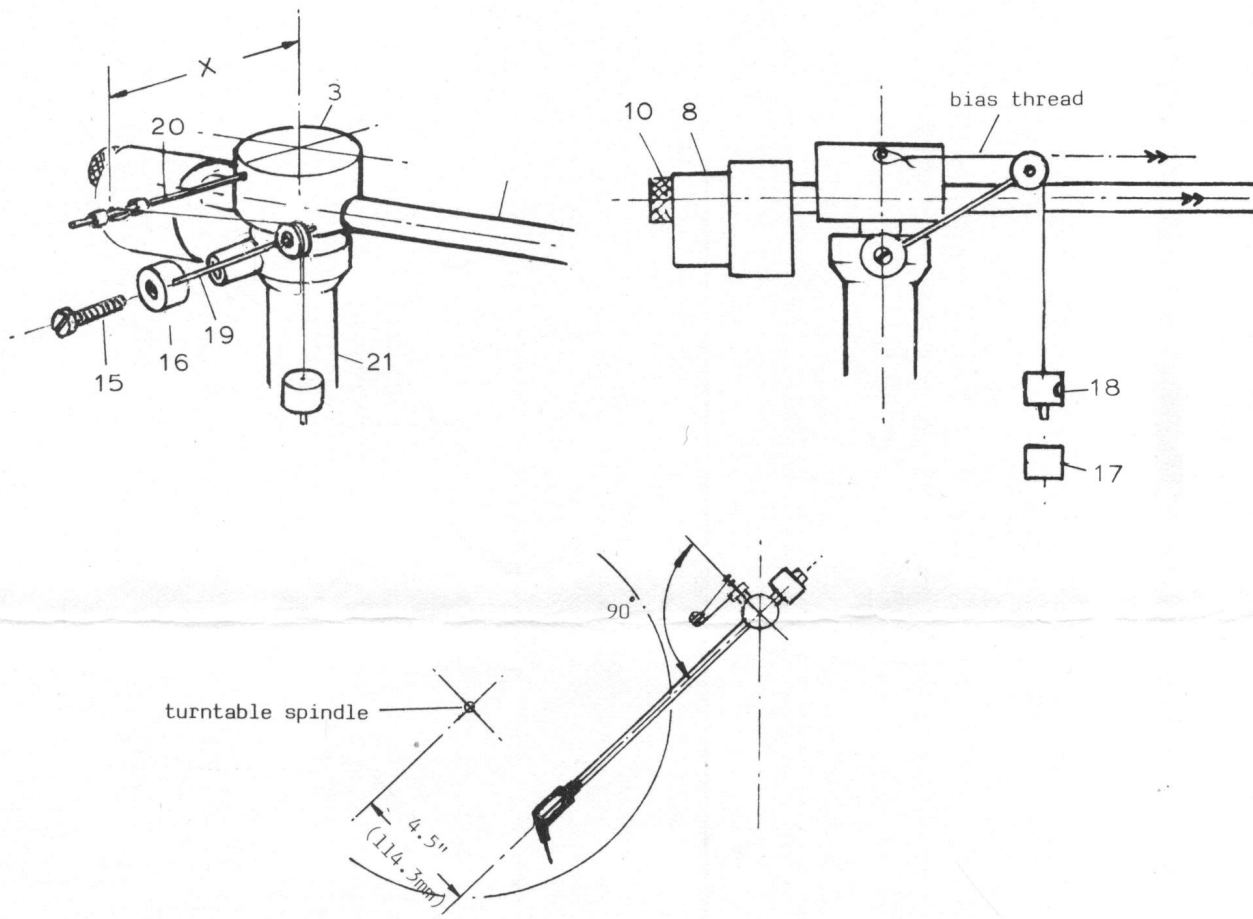
10. DAMPING PROCEDURE

Having completed the setting up, the pillar well (21) may be filled with silicone fluid from the syringe provided.

Pierce the nozzle of the syringe and fill the well to the top. Most cartridges perform better with the well filled.

ADJUSTMENT OF THE GH UNI-LIFT

- Final adjustment of the GH Uni-lift can be set for height and rate of descent. Having completed the arm setting up adjust the arm support/rest (62) and the Uni-lift body (63) within the support plate (61), by slackening the screw (59) and retighten. Make sure that there is enough clearance between the arm tube (2) and the arm support/rest (62), when the cartridge stylus rests on a record. The screw in the Uni-lift body may be adjusted to vary the rate of descent. Make sure that the lever(63) is positioned for ease of movement in relation to the support plate (61).



BIAS KIT ASSEMBLY

1. The bias weight loop should be attached to the bias rod(20) between the plastic spacers.
2. The bias thread support(19) should be set so that the thread is level with the arm tube when the cartridge stylus is resting on a record.
3. The position of the bias thread between the plastic spacers as shown in the illustration is given in the table.
4. The extra bias weight can be pushed on to the stem of the main one(18).
5. Complete the setting up as shown in the illustrations.

playing weight in grms.	Dimn. 'X'	
	1 bias weight	2 bias weights
1.00	.60"(15.2mm)	
1.50	1.10"(27.9mm)	
2.00		.90"(22.8mm)
2.50		1.05"(26.6mm)
3.00		1.20"(30.5mm)

SPECIFICATION

Overall length 289.6mm (11.40")
 Height 43mm (1.70") -- 90mm (3.5")
 Pivot stem length to top of arm 86.4mm (3.4")
 Pivot to stylus point 228.6mm (9.0")
 Pivot to centre of turntable 212.85mm (8.38")

Offset angle 23°
 Rear overhang 60.9mm (2.40") maximum
 Headshell mounting 12.7mm (.50") centres
 Bearing friction 6 mgm



G. F. C. HADCOCK
 AUDIO ENGINEERS SUPPLIES AND DESIGNS