

RPD

Stereo Headphones



FOSTEX

Give a "natural" presentation of musical sound

Smoothly Expanded Highs, Sharply Damped Dynamic Lows, Delicate and Refreshing Tones

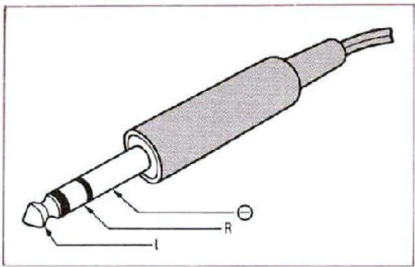
FOSTEX's new headphones are of an RP type, offering superior performance and combining the merits of the electrostatic type and the dynamic type. These headphones naturally produce music by making efficient use of the features of the RP system, such as sharp resolution, wide and dynamic range, and excellent transient response with low distortion. Requiring neither an external power source nor adapter, these models can be used through direct connection to the headphone jack of your amplifier or tape recorder. This is one of the features of the RP type headphones. FOSTEX has integrated soft earpads designed to attach importance to the feeling of snugness, adjustable headband of an efficient and functional design, and adopted the Y-shaped drawing type connection cord in consideration of the balance between the right and left cords.

What is the RP system?

The RP system is an electrically driven electro-acoustic transducer using a plane coil diaphragm. RP is short for REGULAR PHASE, a surface driving system which actuates the whole surface of the diaphragm with the same phase. The RP system is basically so constructed that entire diaphragm is evenly driven by supporting extremely thin plane coils of high density between pairs of powerfully magnetic circuits with identical poles opposed, through a unique holding method. Since the vibratory system is very small in mass and evenly driven, RP type headphones give a superior performance combining the tonal quality of electrostatic type headphones and wide dynamic range of dynamic type headphones. The outstanding features in regards tonal quality and performance are as follows:

1. Fully increased clarity of highs with flat response characteristics.
2. Extremely low distortion.
3. Excellent transient characteristics.
4. Makes possible the manufacture of headphones with outstanding directional characteristics.
5. Extremely wide in the reproduction range of high frequencies.
6. Flat impedance characteristics.
7. Excellent input-proof characteristics.
8. Make possible the manufacture of thin type, lightweight units.
9. Available for a wide range of application, such as squawkers, tweeters, microphones, headphones and the like.

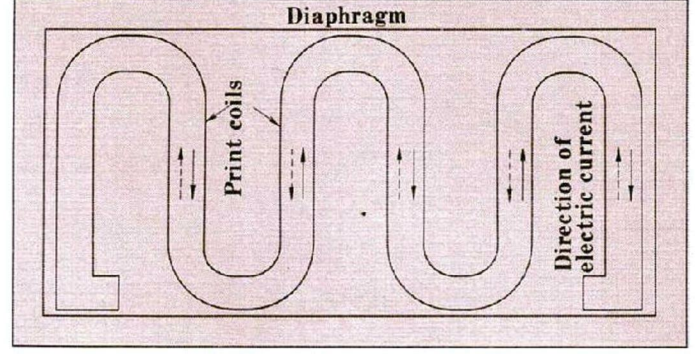
(15 patents pending)



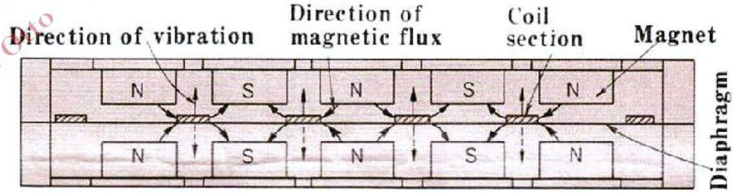
Usage

Unlike electrostatic type headphones the RP type headphones require neither an external power source nor adapter; therefore FOSTEX's RP type headphones may be used by simply inserting the headphones plug into the headphone jack of your amplifier or stereo equipment. Make sure to check the right and left sides (R·L) of the headphones before placing the headphones over the ears.

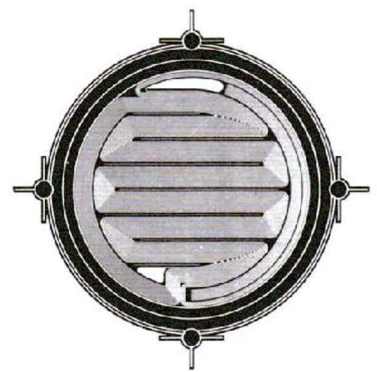
Rear view of diaphragm



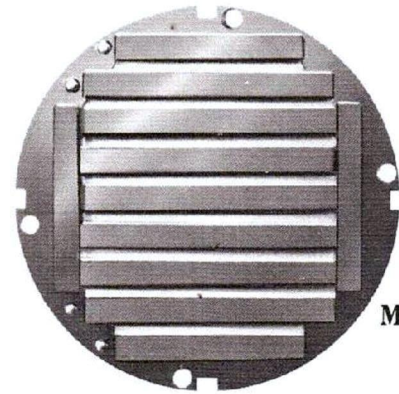
Cross section view of diaphragm



Diaphragm for T50



Diaphragm for T30



Magnet for T50



T50

Specifications

A high-grade model incorporating power with delicacy of tone. Large-size earpads provide a snug feeling. The diaphragm formed of polyamide film and the powerfully magnetic circuits, allow the T50 to display the characteristics of the RP system to the fullest.

Impedance : 60 Ohms at 1KHz
Sensitivity : 94dB at 1mW input
Maximum Power Input : 200mW
Frequency Response: 20~20,000Hz
Cord length : 3m with 1/4" stereo plug
Weight : 400g (without cord)



T30

Specifications

A top-performance model engineered to reproduce sharp tones, sequipped with the soft earpads securely fitted to each unit and an ample length of cord.

Impedance : 50 Ohms at 1KHz
Sensitivity : 96dB at 1mW input
Maximum Power Input : 200mW
Frequency Response: 20~35,000Hz
Cord length : 2.8m with 1/4" stereo plug
Weight : 330g (without cord)



T20

Specifications

A compact and lightweight model designed to provide superior quality and tone equal to the T30. Brilliant and sharp tone reproduction of cheerful music may be enjoyed. The gentle feeling of headphones fitting over the ears is one of the features of the T20.

Impedance : 50 Ohms at 1KHz
Sensitivity : 96dB at 1mW input
Maximum Power Input : 200mW
Frequency Response: 20~30,000Hz
Cord length : 2.8m with 1/4" Stereo plug
Weight : 300g (without cord)



T10

Specifications

An economical, compact and lightweight model making the best use of the superior performance of the RP system. Reproduces refreshing music with bright and delightful tones.

Impedance : 50 Ohms at 1KHz
Sensitivity : 91dB at 1mW input
Maximum Power Input : 200mW
Frequency Response: 20~25,000Hz
Cord length : 2.8m with 1/4" Stereo plug
Weight : 270g (without cord)



Fostex
Authorized Distributor

FOSTEX CORPORATION TOKYO, Japan