

EMPIRE



Archiv Michael Otto



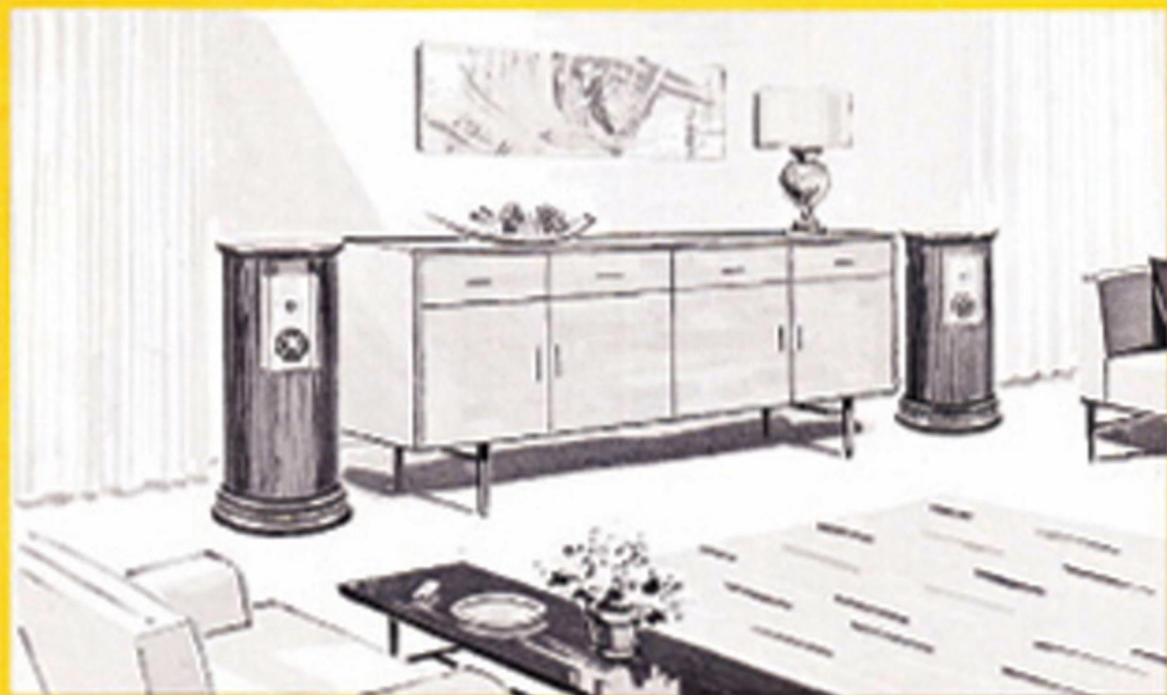
World's most perfect high fidelity components...

the **EMPIRE**

Grenadier MODEL 8000
DIVERGENT LENS SPEAKER SYSTEM

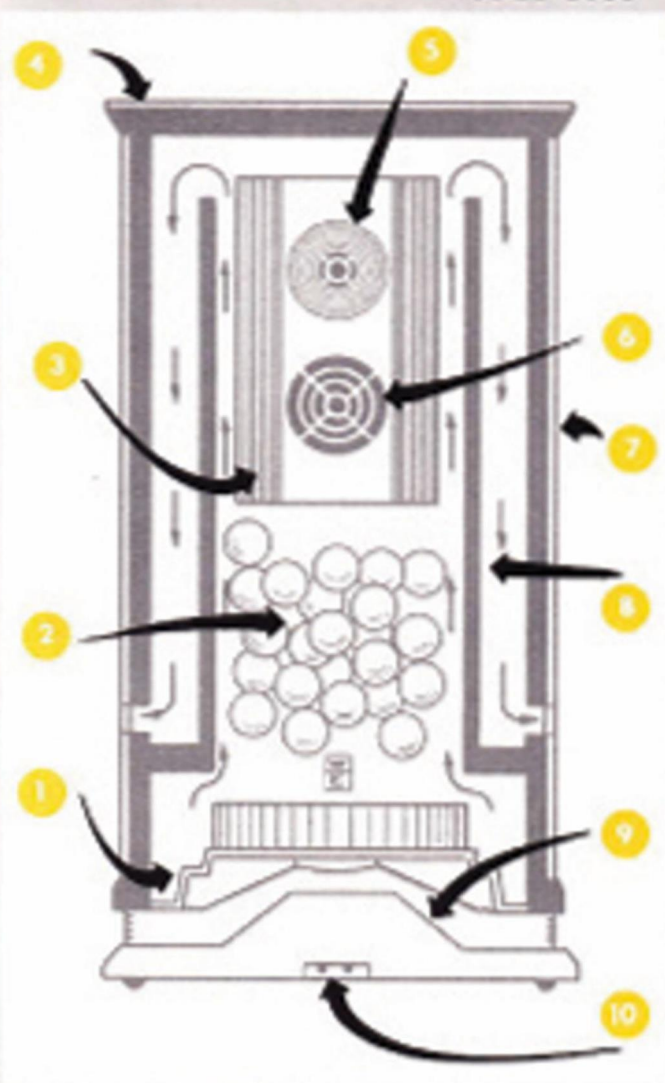
LET'S YOU SIT ANYWHERE . . . HEAR EVERYTHING

Archiv Michael Otto



Acoustically engineered to fit any room layout. Esthetically designed to fit any decor . . . from warm elegance to stark modern. Fits in corners or against walls. Truly a beautiful and functional achievement of sight and sound.





EXCLUSIVE SONIC COLUMN,
TOTALLY RIGID WITHOUT
RESONANCE

WHEN COMPARING EMPIRE'S *Grenadier* MODEL 8000 WITH OTHER SPEAKERS CHECK THESE 10 IMPORTANT FEATURES:

- ✓ 1. 12 inch mass loaded woofer with floating suspension, four inch voice coil and world's largest (18 lbs.) speaker ceramic structure.
- ✓ 2. Sound absorbent rear loading.
- ✓ 3. Die-Cast Mid Frequency-High Frequency full dispersion acoustic lens.
- ✓ 4. Polyester laminate surface—mar-proof and stain-proof.
- ✓ 5. Ultra-Sonic domed tweeter.
- ✓ 6. Full presence mid range direct radiator.
- ✓ 7. Totally damped acoustic fibre enclosure.
- ✓ 8. Exclusive Dynamic Reflex structure for enriched bass response.
- ✓ 9. Front loaded horn with 360 degree aperture throat.
- ✓ 10. Complete symmetry of design with terminals concealed underneath.

Archiv Michael Otto

TECHNICAL SPECIFICATIONS: (MODEL 8000)

FREQUENCY RESPONSE — 30-20,000 cps.

NOMINAL IMPEDANCE — 8 ohms

POWER HANDLING CAPACITY:

Music Power — Maximum undistorted 100 watts

Sine Wave Power — 30-450 cps 60 watts

— 450-5000 cps 40 watts

— 5000-20,000 cps 20 watts

COMPONENTS: Woofer — 12 in. High Compliance with 4 inch voice coil.

Mid Range — Direct Radiator

Tweeter — Ultra Sonic Domed Tweeter

} Coupled to Die-Cast
Acoustic Lenses

TOTAL MAGNETIC POWER — More than one million lines of force.

OVERALL DIMENSIONS — Diameter 15¼". Height 29". Weight 65 lbs.

FINISH — Sable walnut finish.

the newest... **EMPIRE'S**

Royal Grenadier

MODEL 9000*

DIVERGENT LENS SPEAKER SYSTEM



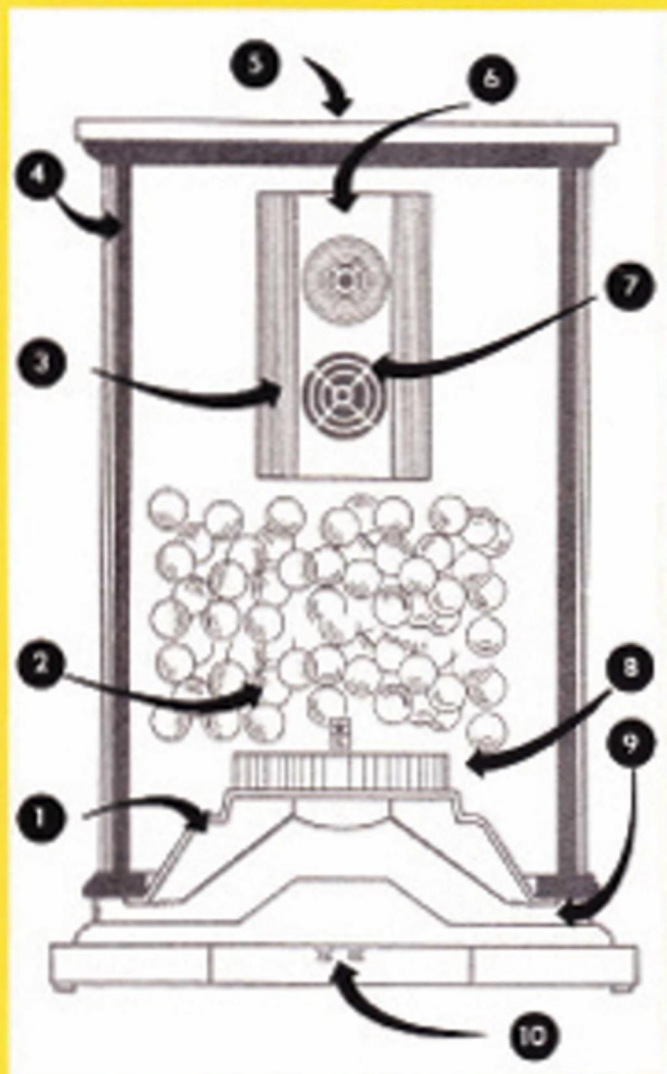
Elegance of sight and sound, styled in classic fashion, the Royal Grenadier is the latest word in high fidelity listening. The Royal Grenadier too, is designed to accentuate or blend with the décor of modern living or old world tradition.



*Model 9000M ROYAL GRENADEIER
is available with imported marble top.

Royal Grenadier

MODEL 9000



THE EMPIRE *Royal Grenadier* MODEL 9000
PROUDLY BOASTS THESE EXTRAORDINARY
FEATURES:

- ✓ 1. 15" mass loaded woofer with floating suspension and 4" voice coil.
- ✓ 2. Sound absorbent rear loading.
- ✓ 3. Die-cast mid frequency-high frequency full dispersion acoustic lens.
- ✓ 4. Hand rubbed satin walnut finish.
- ✓ 5. Imported marble top.
- ✓ 6. Ultra-sonic domed tweeter.
- ✓ 7. Full presence mid range direct radiator.
- ✓ 8. World's largest (18 lbs.) speaker ceramic magnet structure.
- ✓ 9. Front loaded Horn with 360° aperture throat.
- ✓ 10. Complete symmetry of design with terminals concealed underneath.

Archiv Michael Otto

TECHNICAL SPECIFICATIONS: (MODEL 9000)

FREQUENCY RESPONSE — 20-20,000 cps.

NOMINAL IMPEDANCE — 8 ohms

POWER HANDLING CAPACITY:

Music Power — Maximum undistorted 100 watts

Sine Wave Power — 20-450 cps 60 watts

— 450-5000 cps 40 watts

— 5000-20,000 cps 20 watts

COMPONENTS: Woofer — 15 in. High Compliance with 4 inch voice coil.

Mid Range — Direct Radiator } Coupled to Die-Cast

Tweeter — Ultra Sonic Domed Tweeter } Acoustic Lenses

TOTAL MAGNETIC POWER — More than one million lines of force.

OVERALL DIMENSIONS — Diameter 22". Height 29". Weight 85 lbs.

FINISH — Hand rubbed satin walnut finish.

EXCLUSIVE RIGID NON-RESONANT
HEPTAGONAL CONSTRUCTION

presenting . . . **EMPIRE'S**

Imperial Grenadier

MODEL 8200

Designed for bookshelf, or built-in console cabinet style, the truly magnificent Imperial Grenadier is unveiled for the first time. Contemporary in appearance, Empire's Imperial Grenadier is the latest word in better listening enjoyment.

EMPIRE'S EXCLUSIVE DYNAMIC REFLEX CONSISTS OF HIGH Q REFLEX TUNED COLUMNS FOR IN-PHASE



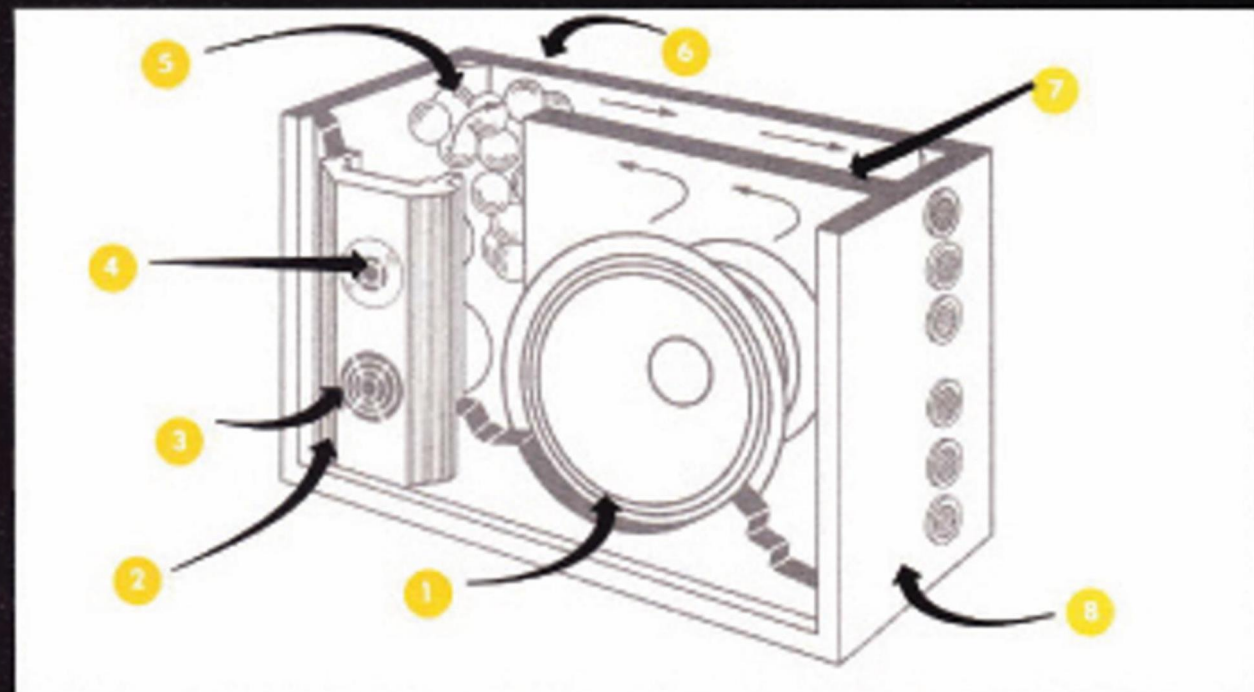
Archiv Michael Otto



THE *Imperial*

- ✓ 1. 12 Inch mass loaded woofer with floating suspension, 4 inch voice coil and world's largest (18 lbs.) speaker ceramic magnet.
- ✓ 2. Die-Cast Mid Frequency-High Frequency full dispersion acoustic lens.
- ✓ 3. Full presence mid range direct radiator.
- ✓ 4. Ultra-sonic domed tweeter.

LOW FREQUENCY REINFORCEMENT. SCIENTIFICALLY ACCURATE GRADIENTS AND VENTED PORTS PROVIDE UNBELIEVABLY ENRICHED BASS RESPONSE.



CUT AWAY DRAWING EMPIRE'S MODEL 8200

Grenadier FEATURES:

- ✓ 5. Sound absorbent rear loading.
- ✓ 6. Extraordinary hardwood construction. Fully rigidized, and internally braced non-resonant enclosure.
- ✓ 7. Exclusive dynamic reflex design for enriched bass response.
- ✓ 8. Hand rubbed satin walnut finish.

TECHNICAL SPECIFICATIONS: (MODEL 8200)

FREQUENCY RESPONSE — 30-20,000 cps.

NOMINAL IMPEDANCE — 8 ohms

POWER HANDLING CAPACITY:

Music Power — Maximum undistorted 100 watts

Sine Wave Power — 30-450 cps 60 watts

— 450-5000 cps 40 watts

— 5000-20,000 cps 20 watts

COMPONENTS:

Woofer — 12 inch High Compliance with 4 inch voice coil.

Mid Range — Direct Radiator

Tweeter — Ultra-Sonic Domed Tweeter

} Coupled to Die-Cast

} Acoustic Lenses

TOTAL MAGNETIC POWER — More than one million lines of force.

OVERALL DIMENSIONS — 24 $\frac{3}{4}$ " W. x 14" H. x 12 $\frac{1}{4}$ " D. Weight: 65 lbs.

FINISH — Satin walnut finish, hand rubbed.



Archiv Michael Otto

the **EMPIRE** *Grenadier*

story



Historically, the shape of a musical instrument came from the requirements of the desired sound . . . thusly, the columnar shape of the Empire Grenadier Speaker system originated with the desire for thrilling sound, and the mechanical and acoustical requirements necessary to achieve it dictated the configuration. Its shape is a function of its performance. Its performance, an achievement of design.

This unusual development of a speaker system, relatively free from room standing waves, approaches acoustically flat frequency response. Sound level and tone remain constant virtually anywhere in the listening area. Its three divergent acoustic lenses achieve phenomenal stereo separation.

With the Empire Grenadier, stereo sounds like stereo in any room, in any arrangement. Superb presence and undeniable realism certainly unlike any speaker you've ever heard, emanate from a speaker unlike any you've ever seen.

Archiv Michael Otto



1. A cylinder within a cylinder. Tuned columns for dynamic reflex enriched bass response. A totally damped—rigidly stiff speaker enclosure. There are no cabinet vibrations. Formed from acoustic material and wrapped with walnut to delight the eye.



2. A massive three driver magnetic structure totaling one million lines of force produces the high efficiency needed to drive easily with any of today's receivers, yet handles up to 100 watts of music power without overload or burnout.



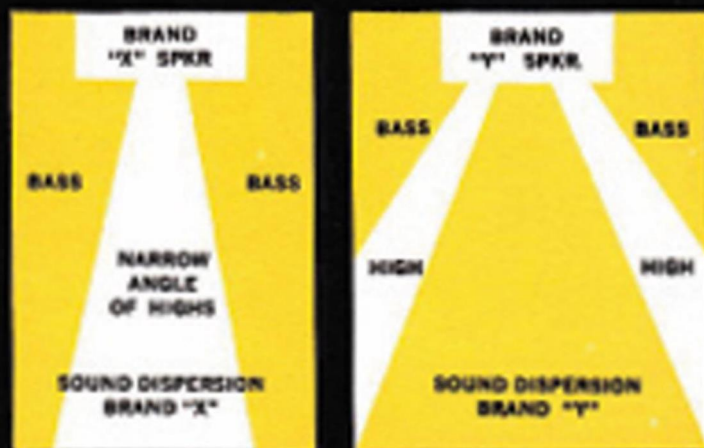
3. The woofer faces downward, close to the reflecting floor surface. It feeds through a front loaded horn with a full circle aperture throat. This provides 360 degree radiation, for full dispersion of sound and prevents standing waves from developing in the room.

TRY THIS SIMPLE TEST!



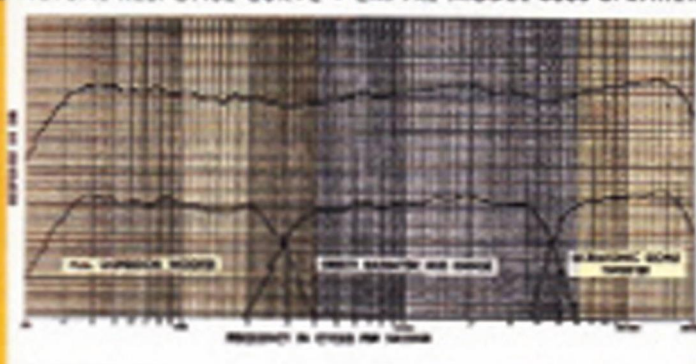
We urge you to take a few moments to try this simple test. Walk around an arc in front of the Empire Grenadier Speaker. You will notice no change in sound level of bass, mid range and highs. No matter in which area you may be located, full frequency and separation is assured by Empire's exclusive divergent acoustic lens system.

Try this test with any other brand of speaker. Some speakers will only have a narrow angle of high frequency sound propagation. Some speakers may have 2 or even 3 bands of high frequency sound. With these or other speakers, slight shifts of position, turning one's head, or even leaning to one side may cause sharp changes in the listening tone and level.

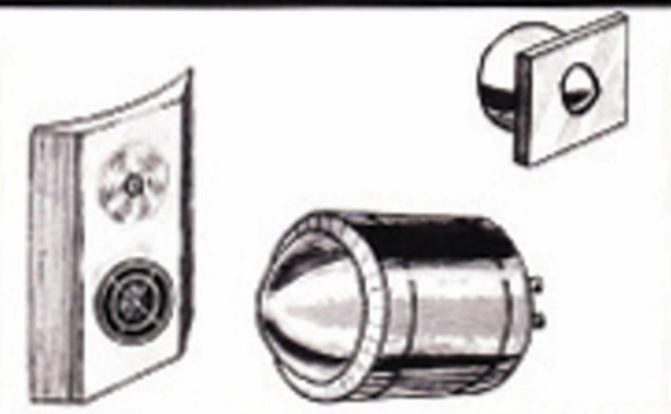


Archiv Michael Otto

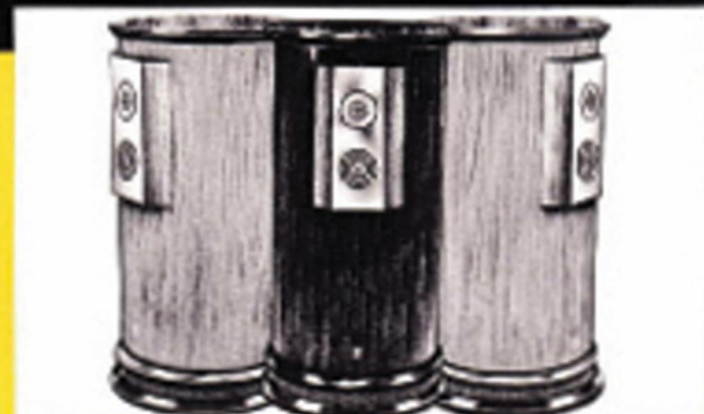
ACTUAL RESPONSE CURVE • EMPIRE MODEL 8000 SPEAKER



4. A unique combination of electrical and acoustic crossovers and cutoffs avoid woofer cone breakup and mid range response dips. The woofer, mid range and tweeter combine at mathematically correct crossover frequencies.



5. The full presence mid-range direct radiator and the low-mass ultrasonic domed tweeter are a modern day engineering miracle. In combination with the die-cast divergent acoustic lens, there is an achievement of broad sound propagation.



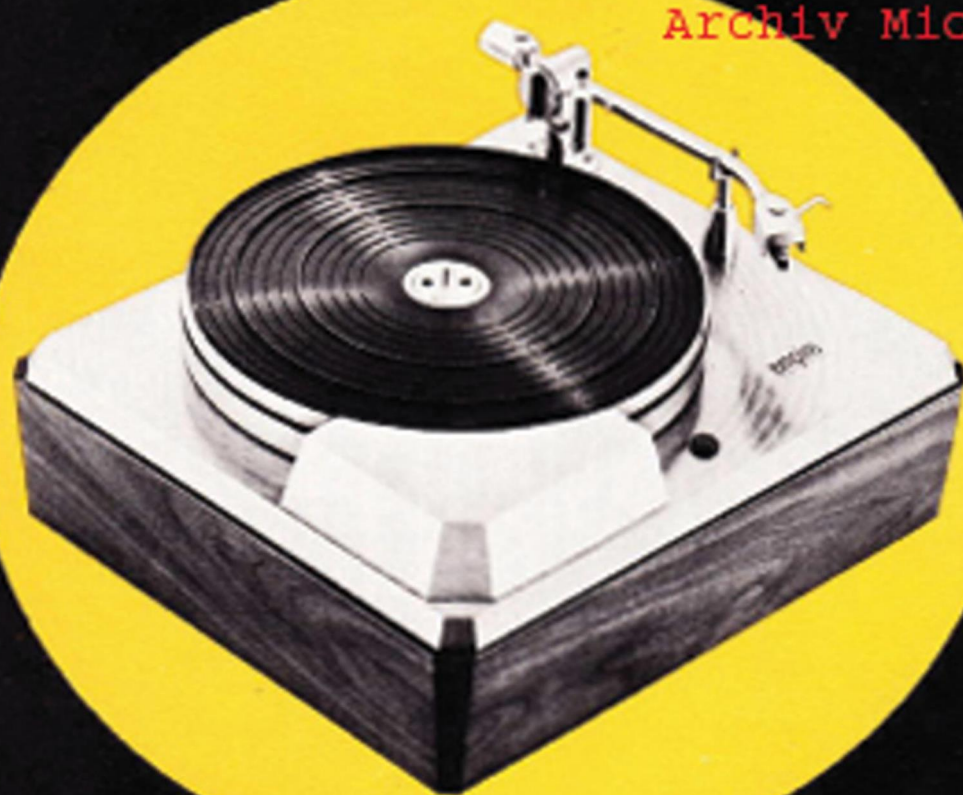
6. Speaker placement is not critical. Move it, turn it, aim it, or bounce it. You get full sound, full separation, full stereo . . . anywhere in your room.



TROUBADOR 398

WORLD'S MOST PERFECT RECORD PLAYBACK SYSTEM

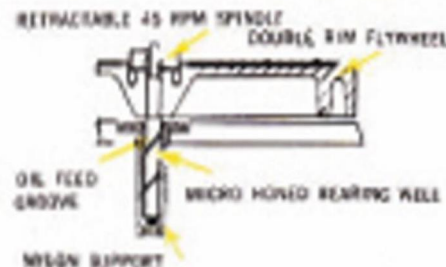
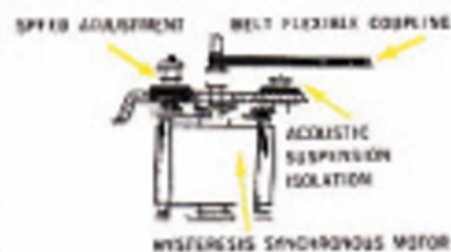
Archiv Michael Otto



THE FAMOUS EMPIRE 398. Outstanding! Too perfectly engineered for even a whisper of distortion . . . too handsomely finished to hide behind cabinet doors. The response of the country's hi fi magazines to the Empire Troubador says it as well as we could. High Fidelity, for example, reports: "The 'Troubador' represents a precision-engineered product of the highest quality . . . wow, flutter and rumble completely negligible . . . speed accuracy very good . . . maximum tracking error of the arm was judged to be negligibly small . . . very low needle talk, minimum hum pick-up . . . clean response . . . one of the finest, handsomest record players available."

TABLE OF CONTENTS: EMPIRE 398 TROUBADOR CONSISTS OF . . .

EMPIRE 208 — 3 speed "silent" turntable . . . Empire 980 dynamically balanced playback arm with the sensational Dyna-Lift* . . . and the new EMPIRE 880P mono-stereo cartridge featuring the virtually indestructible Dyna-Life* stylus. Minimum overall space requirements: Width 17"; Depth 15"; Height 8 3/4". Complete in handsome walnut base. (Troubador 398, without base . . . Minimum space requirements: Width 17"; Depth 15"; Height above mtg. board 4"; depth required below turntable base plate 2 1/2".



- Turntable has only 2 moving parts.
- Resilient nylon "seat" supports and cushions the rest of the main bearing.
- A case hardened, lapped steel shaft fits precisely into the bearing well (honed to micro finish).
- 3 Speeds — 33 1/3, 45, 78 RPM - Constant speed heavy duty, hysteresis-synchronous motor.
- Continuous flexible belt perfectly ground to constant thickness ± .0001 in., couples turntable directly to the motor pulley — no intermediate idlers.



TROUBADOR 488

NO LARGER THAN A RECORD CHANGER

Archiv Michael Otto

EVERY INCH A TROUBADOR. The NEW Empire 488 is tailor-made for console or equipment cabinets. Record playback in console cabinets has special problems. Acoustic feedback for one. Because of the close proximity of turntable to speaker, stereo equipment often "talks back." Recently, Audio Magazine tested the Empire Troubador . . . they reported: "We found the acoustic suspension system one of the stablest mounting systems we have ever encountered to date. This suspension makes the 488 almost impervious to acoustic feedback and shocks.

Other varying factors important to cabinet owners are stability and level surfaces; the jars and jolts of heavy footsteps or accidental bumps can jump some arms even in the most stable cabinets. Stability under virtually any conceivable situation is now assured by Empire's sensational "Dyna-Mount" (vibration-absorbing multiple-floating suspension system) found only in the new Empire 488.



Acoustic isolation motor suspension.
- Highly accurate Fine Speed Control.
- Push button power control with on-off light. - Optimum distribution of turntable mass; 6 lb. heavy machined aluminum, individually balanced to precise concentricity. - Machined heavy aluminum base plate.
- Safety suspension rubber mat. - Retractable 45 RPM adapter. - Rumble better than 65 db. - Wow and flutter less than .05%. - Power: 117 Volt, 60 cycles AC, 30 Watts.

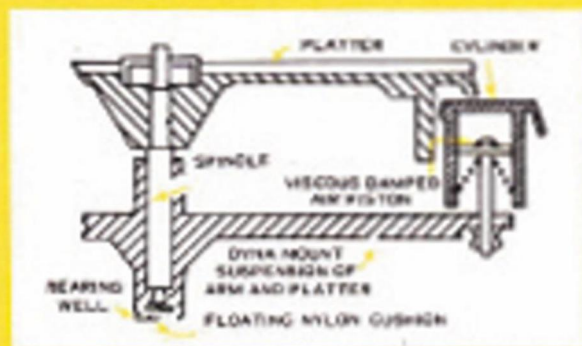
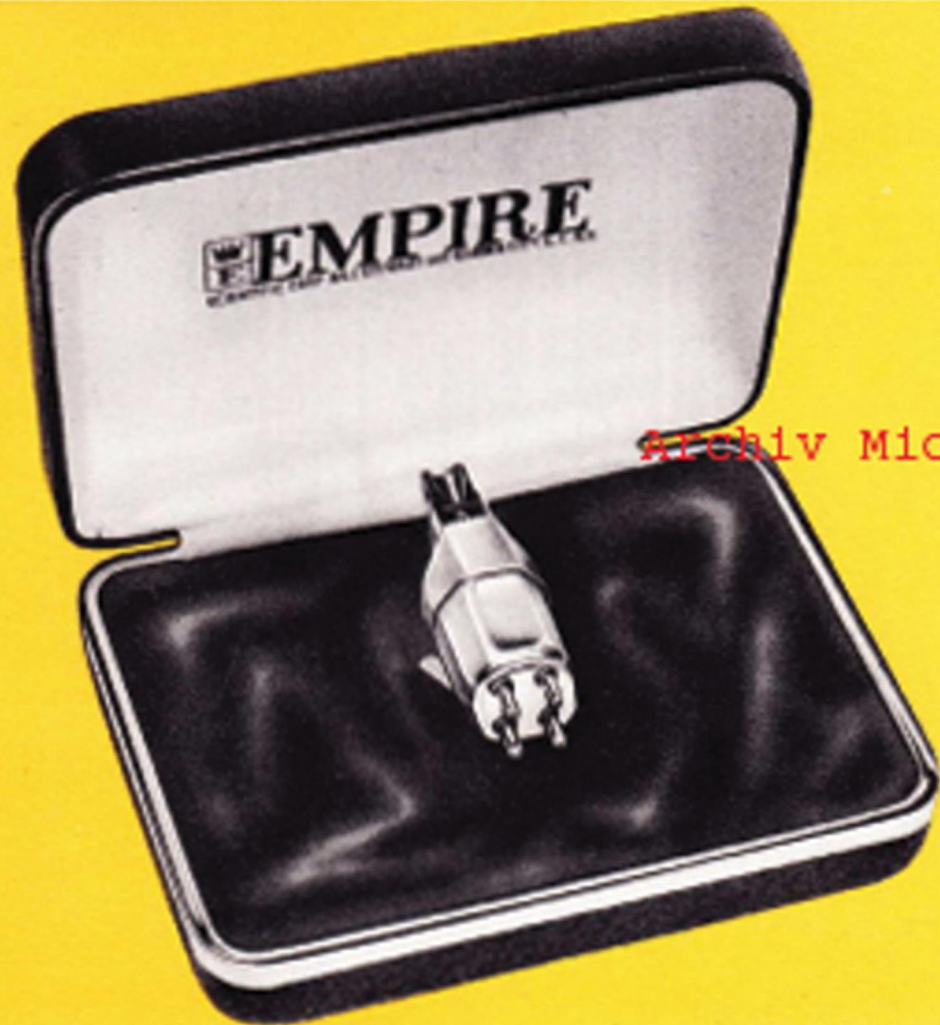


TABLE OF CONTENTS: EMPIRE 488 TROUBADOR CONSISTS OF:

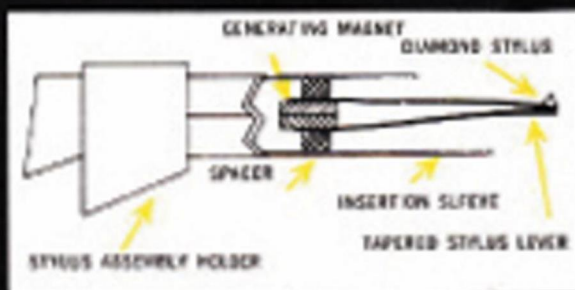
Empire 408 — 3 speed "silent" turntable . . . Empire 980 dynamically balanced playback arm with the sensational Dyna-Lift* . . . and the new Empire 880P mono-stereo cartridge featuring the virtually indestructible Dyna-Life* stylus. Walnut mounting board supplied. Minimum space requirements — less mounting board — Width 15 3/4", Depth 13 1/4" . . . Height required above mounting board 2 3/4", Depth required below turntable base plate 3 1/2". Troubador 488, with Walnut base.



The EMPIRE CARTRIDGE

with exclusive DYNALIFE stylus

World's Most Perfect Mono/Stereo Cartridge . . . engineered to outperform and outlast any cartridge on the market today. Lower dynamic mass and higher compliance than any other cartridge . . . eliminates distortion and makes possible a lighter stylus, better frequency response, greater channel separation, and the remarkable new standard for TRACKING FORCE—AS LOW AS ½ GRAM. At such low tracking force, the EMPIRE 880P not only eliminates record wear, but also eliminates distortion. The amazing Dyna-Life* Stylus is the world's lightest . . . an ultra-sophisticated hand-polished diamond stylus that, coupled with the other cartridge features, assures the longest possible life of the EMPIRE 880P. *Patent Pending.



Following
IS 15 DEGREE VERTICAL TRACKING ANGLE

TECHNICAL SPECIFICATIONS

EMPIRE 880:*

Frequency Response—10 to 25,000 cycles/sec. ■ Output Voltage—10.0 millivolts per channel ■ Channel Separation—more than 30DB ■ Load Impedance—47,000 ohms ■ Weight—10 grams ■ Compliance—Vertical and Horizontal, 10×10^{-8} cm/dyne ■ Tracking Force—¾ to 6 grams ■ Stylus—.7 mil radius hand polished diamond ■ Terminals—4 terminal output ■ Mounting—Standard ⅜ or ½ inch mounting centers.

EMPIRE 880P:*

Frequency Response—10-28,000 cycles/sec. ■ Output Voltage—10.0 millivolts per channel ■ Channel Separation—more than 30DB ■ Load Impedance—47,000 ohms ■ Weight—10 grams ■ Compliance—Vertical and Horizontal, 15×10^{-8} cm/dyne ■ Tracking Force—½ to 4 grams ■ Stylus—.6 mil radius hand polished diamond ■ Terminals—4 terminal output ■ Mounting—Standard ⅜ or ½ inch mounting centers.

EMPIRE 880PE:*

Frequency Response—8 to 30,000 cycles/sec. ■ Output Voltage—10.0 millivolts per channel ■ Channel Separation—more than 30DB ■ Load Impedance—47,000 ohms ■ Weight—10 grams ■ Compliance— 20×10^{-8} cm/dyne ■ Tracking Force—½ to 4 grams ■ Stylus—2 x .9 mil bi-radial elliptical hand polished diamond ■ Terminals—4 terminal output ■ Mounting—Standard ⅜ or ½ inch mounting centers.



980 ARM

THE "NO ACOUSTIC FEEDBACK" ARM. Combines the two most sought-after qualities in arm design: free suspension and dynamic balance. By locating the pivot points at the precise center of the arm mass, dynamic balance is achieved in all planes. Even the application of stylus forces does not upset this balance. A linear-torque coil spring acts directly on the pivot shaft at the center of the arm's mass. Stylus force is "dialed" with a gram-calibrated knob. Yet, for all the rock-steady stability of the Empire 980, its lateral and vertical compliance is almost incredible. Both bearings are suspended in precision steel-ball races. The arm yields to the slightest impulse, responds and moves effortlessly... even with the most severely warped record... even when the turntable is tilted, or upside down. Because of its extreme compliance and low inertia, the 980 tracks any cartridge at a lower stylus force than any manufacturer's prescribed minimum.

Archiv Michael Otto

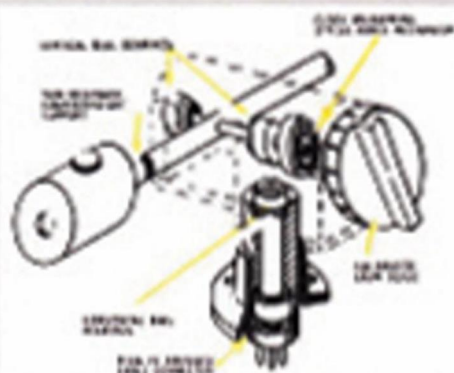
980 ARM TECHNICAL FEATURES:

- More perfect dynamic balance assured by offset pivot design.
- Precise stylus force adjustment from 0 to 8 grams to 0.1 g.
- Maximum vertical and lateral compliance with precision ball bearings.
- Lowest fundamental resonance frequency ever achieved in any arm: 6 cycles per second (inaudible).
- Stylus overhang adjustment — quick-release bracket-mount permits the maintenance of optimum stylus-to-pivot distance, regardless of cartridge make.
- 5-wire circuit eliminates ground loops (and the hum they induce).
- Easy plug-in installation — no wiring, no soldering.
- Vertical Height adjustment for both arm and arm rest: 1 1/2".
- Arm offset angle: 23.8°
- Counterweight zero balance adjustment from 2-25 grams.
- Maximum tracking error: 0.5°
- Over all arm length: 12 1/4".



DYNA-LIFT*

... self-lifting device eliminates stylus abuse and undesirable run out groove sound at the end of the record. Lifts magnetically more delicately than possible with the human hand. *Patent Pending.



FACTS ABOUT PLAYING RECORDS

■ A useful maxim to follow in evaluating a record playback system is not only what are the specifications, but how does it sound. The string instruments should sound clean and unrestrained. Bass unassuming, with no muddying in the mid range for full presence. Can you identify each instrument when several are playing simultaneously.

■ Tracking, is the ability of the stylus to follow the complex record groove accurately and faithfully.

■ To understand this fully, let's look at the forces trying to thrust the stylus away from the walls of the groove.

■ At a frequency of 10,000 cycles per second, the signal on a record groove can subject the cartridge stylus to accelerations of 300 G's (compare this with the acceleration of 20 G's our Astronauts face when projected into space). The vertical component of Force that this acceleration exerts on the dynamic Mass of the cartridge stylus, is trying to expel the stylus from the groove. The counteracting force of stylus pressure exerted by the arm tries to hold the stylus in the groove.

Archiv Michael Otto

■ The question is often asked, why do some records require more tracking force than others. The answer lies in the amount of recorded groove acceleration. Loud passages require higher tracking force.

■ How much tracking force should I use is another question. The answer; The lowest force sufficient for full tracking. Lowering stylus force in half increases record life four fold. Remember, that after only a few years as a high fidelity component owner, your record collection is usually worth more than your equipment.

■ Accumulation of dirt and grime on record surfaces can rapidly deteriorate playback performance. The user should attempt to maintain clean grooves in his record collection. Several very fine record cleaning devices are available today. The most successful are those that combine a pointed bristle sweep brush with destaticizing materials. The bristle of a record cleaning device should be pointed to enable the removal of grit accumulation out of the bottom of the groove. The destaticizing element removes static charges from the surface of the record. This static charge is caused by the friction developed between stylus and vinyl as the record is tracked. Static charges on the record surface, unless removed, will attract dust particles and return the record rapidly to its original dirt packed state.

■ The cartridge of your record playback system should have a fine quality diamond stylus. This type of diamond, if operated with a well engineered arm will permit at least 1000 hours of playing time before the need for replacement. Under any circumstances, the stylus tip should be checked at least once per year for signs of wear. Excessive wear can change the spherical shape of the original stylus tip into a chisel with destructive effects on record groove walls.

BASIC STEREO RECORD LIBRARY (RECOMMENDATIONS)

CONCERTOS

BACH: "Brandenburg" "Concertos Nos. 1 to 6." Manuhin, Bath Festival Chamber Orch. (Capitol SG BR-7217).
BARTOK: "Concerto For Orchestra." Leinsdorf, Boston Sym. (Victor LSC-2643).
BEETHOVEN: "Piano Concerto No. 5." Serkin-Bernstein (Columbia MS 6366).
BRAHMS: "Piano Concerto No. 2." Serkin and Ormandy. (Columbia MS 6156).
BRAHMS: "Violin Concerto." Oistrakh-Klem-

perer. (Angel S 35836).
CHOPIN: "Piano Concerto No. 1, in E Minor." Rubinstein, New Sym. of London under Skrowaczewski (Victor LSC-2575).
GERSHWIN: "Rhapsody in Blue." Bernstein, Columbia Sym. (Columbia MS-6091, with "American in Paris.")
GRIEG: "Piano Concerto in A Minor." Rubinstein. (RCA Victor LSC/2566).
LISZT: "Piano Concertos Nos. 1 and 2."

Richter, London Sym. under Kondrashin. (Philips PHS-900000).
RACHMANINOFF: "Piano Concerto No. 2, in C Minor." Janis, Minneapolis Sym. under Dorati (Mercury SR-90260).
TCHAIKOVSKY: "Violin Concerto in D." Heifetz. (RCA Victor LSC/UM 2129).
TCHAIKOVSKY: "Piano Concerto No. 1, in B-Flat Minor." Cliburn. (RCA Victor LSC/2252).

Archiv Michael Otto

MISCELLANEOUS ORCHESTRAL

BEETHOVEN: "Piano Sonata No. 14." Rubinstein. (RCA Victor LSC/2654).
COPELAND: "Billy The Kid," "Ballet Suite," and "Rodeo." Bernstein, New York Phil. (Columbia MS-6175).
DEBUSSY: "La Mer." Ansermet, Suisse Romande. (London CS-6024).
HANDEL: "Water Music" and "Royal Fireworks Music." Szell, London Symphony.

(London CS-6235).
MUSSORGSKY: "Pictures At An Exhibition." Reiner, Chicago Sym. (Victor LSC-2201).
RAVEL: "La Valse," "Bolero" and "Rhapsodie Espagnole." Bernstein, New York Phil. (Columbia MS-6011).
RIMSKY-KORSAKOV: "Scheherazade." Bee-

cham. (Angel S 35505).
STRAUSS: "Don Juan," "Til Eulenspiegel." Klemperer. (Angel S 35737).
STRAVINSKY: "Petrouchka." Maszel. (London CS 6339).
STRAVINSKY: "Le Sacre du Printemps." Bernstein. (Columbia MS 6010).
TCHAIKOVSKY: "The Nutcracker." Dorati, London Sym. (Mercury SR2-9013-2-12").

SYMPHONIES

BEETHOVEN: "Symphony No. 3." ("Eroica.") Klemperer. (Angel S35853).
BEETHOVEN: "Symphony No. 5." Reiner (RCA Victor LSC/2343).
BEETHOVEN: "Symphony No. 9." Reiner (RCA Victor LSC/6096).
BRAHMS: "Symphony No. 1, in C Minor." Ormandy, Phila. Orch. (Columbia MS-6067).

DVORAK: "Symphony No. 5 in E Minor." ("New World"). Reiner, Chicago Sym. (Victor LSC-2214).
MENDELSSOHN: "Symphony No. 4, in A." (Italian). Steinberg. (Capitol SP/P 8515).
MOZART: "Symphony No. 40, in C Minor." Dorati. (Mercury SR 90280).

SCHUBERT: "Symphony No. 8, in B Minor." ("Unfinished"). Bruno Walter. (Columbia MS 6218).
TCHAIKOVSKY: "Symphony No. 4, in F Minor." Bernstein. (Columbia MS 6035).
TCHAIKOVSKY: "Symphony No. 6, in B Minor." ("Pathetique") Ormandy. Columbia MS 6160).

AUDIO

**AMERICAN
record
guide**

high fidelity

CRITICS CORNER

High Fidelity Magazine:

■ "The Troubador represents a precision-engineered product of the highest quality...wow, flutter and rumble completely inaudible...hum field completely negligible...speed accuracy very good...maximum tracking error negligibly small...very low needle talk, minimum hum pick-up...clean response...one of the finest and handsomest record players available."

Audio Magazine:

■ "Precise performance...an excellent buy for those who want the quality...we tried to induce acoustic feedback by placing the turntable on top of our large speaker system and turning up the gain—we were unsuccessful."

American Record Guide (Larry Zide)

■ "I found speed variations—that is, flutter and wow—to be inaudible...vibration extremely low...Total rumble figures have not been bettered by any turntable I have tested."

Don Hambly, station mgr. KRE AM FM, Berkeley, Calif.

■ "We have long realized that belt driven tables would be the best to use, but had not been impressed with those on the market. The Empire tables, however, have all the basic requirements of design and simplicity of operation and maintenance that we have sought."

Archiv Michael Otto



EMPIRE

SCIENTIFIC CORP.

845 STEWART AVE • GARDEN CITY, L.I., N.Y.

Canada: Empire Scientific Corp. Ltd., 1476 Eglinton West, Toronto, Ontario

Export: EMEC, Inc., Plainview, New York

BULK RATE
U. S. POSTAGE
PAID
GARDEN CITY, N. Y.
PERMIT NO. 17