



**TAKES  
COMPONENT  
QUALITY  
ON  
THE  
INSIDE...**

*to provide the biggest sound in slim-lines!*



New  
Electro-Voice  
**REGINA  
200**



Now! Enjoy a slim-line system that sounds as good as it looks! The new E-V Regina 200 with component-quality speakers expressly designed to meet the challenge of ultra-thin cabinetry!

In the woofer, for example, where some thin-speaker systems use light-weight "radio set" speakers, the new E-V Regina 200 employs a true 10-inch high fidelity speaker... with powerful 1 lb. 6 oz. ceramic magnet, precision edgewise-wound voice coil and specially-tailored low-resonance suspension. This combination guarantees solid response to 50 cps, plus minimum distortion and optimum efficiency — with even the lowest-powered stereo amplifiers!

Now, examine the tweeter! It has the look and sound of fine laboratory equipment! The heavy die-cast frame and jewel-like machining insures a lifetime of uniform response. And note the polyurethane suspension system that's years ahead of the rest! It's the secret of the remarkably smooth

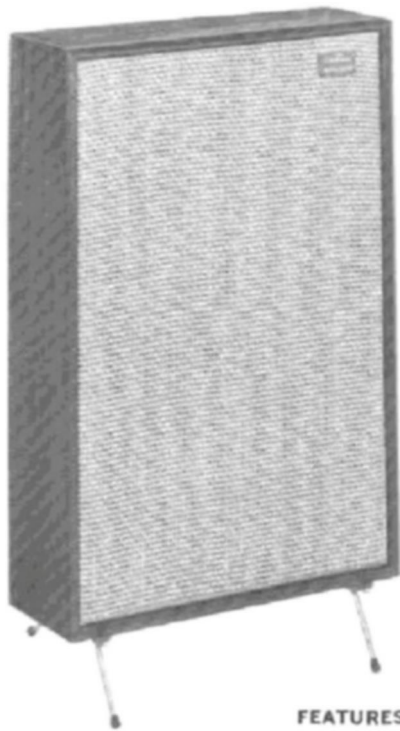
response to 15,000 cps! Note the handy level control on the back of the Regina 200 for exact personal control of tonal balance.

Measuring only 5-5/8 inches deep, 24-3/8 inches high, 16-3/8 inches wide, the new E-V Regina is a beautifully easy answer to your stereo speaker placement problems. And it's easy on the pocketbook, too... just \$89.50 net with oiled walnut finish.

Hear the biggest sound in slim-lines...the new Electro-Voice Regina 200 at your E-V dealer's today!

ELECTRO-VOICE, INC.  
Buchanan, Michigan





New  
Electro-Voice  
**REGINA  
200**

**FEATURES**

- TRUE TWO-WAY SYSTEM with electrical crossover
- ULTRA-COMPACT
- HIGH EFFICIENCY
- FINISHED ON FOUR SIDES for vertical or horizontal placement

The new Electro-Voice Regina 200 is a two-way low-resonance system which, despite its slim contours, provides exceptionally wide-range response. It contains a special 10" woofer, and a 5" extended-range cone-type speaker. These specialized components make it an excellent choice for either monaural or stereo reproduction.

Constructed of fine hardwood veneers, the Regina 200 is finished on four sides to allow use in either vertical or horizontal position. The nameplate may be rotated for vertical placement. The use of heavy, vibration-free  $\frac{3}{4}$ " panels gives it unusual rigidity.

**SPECIFICATIONS**

- Nominal Impedance: 8 ohms
- Power Handling Capacity: 30 watts program
- Frequency Response: 50-15,000 cps
- Components: 10" woofer, 5" mid-range and high frequency speaker, crossover network, and level control
- Size: 5 $\frac{1}{2}$ " D., 24 $\frac{1}{2}$ " H., 16 $\frac{1}{2}$ " W.
- Accessories Available: Brass finished leg set (not provided with unit)

**PLACEMENT**

Nearly any speaker system will sound best if it is placed in or near the corner of the room in which it is to be used. This positioning provides the best coupling between the speakers and the air in the room, the corners and walls acting as a large "horn" for the sound. The small size of the Regina 200 also makes it ideal for bookshelf placement. Best height is at the listener's ear level. Four small self-adhesive felt pads are provided to protect the bottom face of the cabinet.

**OPERATION**

**CONNECTIONS**

Connection of your Regina 200 to the amplifier should be made with No. 18 or larger wire (common lamp cord is good). If you wish to run the lead behind a moulding strip or under a carpet, use 300-ohm TV twin lead. Connect to the 8-ohm and common taps on the back of the amplifier. If the amplifier has a variable damping control, it should be set at 1. Be certain that these connections are secure.

**LEVEL CONTROL**

Your Regina 200 is equipped with a treble adjustment at the rear. Set this control at "Normal" setting indicated. This setting will be found to be the best possible adjustment for most rooms. Further adjustments may be made, however, to compensate for individual room characteristics or to match a speaker of differing efficiency in a stereo arrangement.

**STEREO OPERATION**

Your Regina 200 is designed for professional quality sound reproduction. The same performance features which make this unit outstanding for monaural reproduction will also give superb performance in stereophonic array.

The wiring connections for a pair of Regina 200's in stereo are shown in Fig. 1. When connecting be sure to run the lead from T1 on the Regina 200 to the 8-ohm terminal on the amplifier and from T2 to the COMMON terminal. With this connection both units will then be phased correctly.

**PLACEMENT FOR STEREO**

When arranging a pair of Regina 200's in stereo array, the units should be placed at positions which allow the listener to sit at the apex of a 30° to 40° angle, as shown in Fig. 2. This will provide the best stereophonic effect. If this placement is not possible, you may, by experiment, use room reverberations to advantage in finding other desirable positions.

**SPEAKER REPAIRS**

The Regina 200 system is guaranteed indefinitely against defects in workmanship and materials. Should it become damaged or develop faulty operation from unusual conditions or use, the Electro-Voice service department can return it to factory-new condition. If it becomes necessary to return the equipment for repair, please write for authorization and shipping instructions.

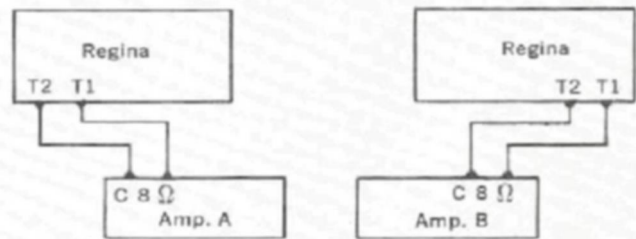


Figure 1 - Stereo Connection

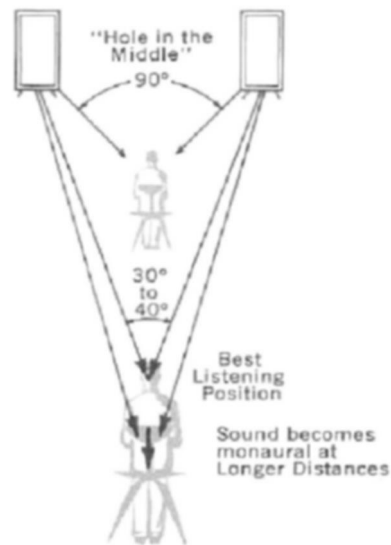


Figure 2 - Placement for Stereo

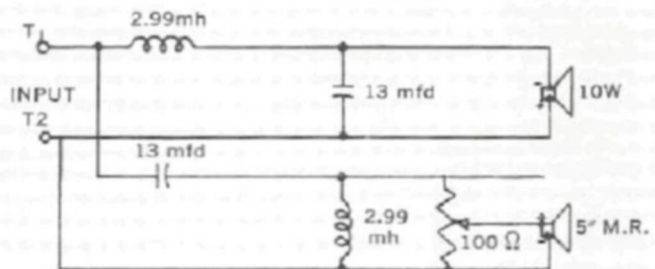


Figure 3 - Schematic

**Electro-Voice®**

ELECTRO-VOICE, INC. BUCHANAN, MICHIGAN