

THE INCOMPARABLE

Patrician IV



As a result of listening tests before a jury of twenty-six audiophiles and components manufacturers, C. G. Burke, recognized authority on High Fidelity Sound Reproduction, makes this unreserved commendation of the Patrician on page 203 of the Saturday Review Homebook of Recorded Music and Sound Reproduction:

"It is paramount, primarily by the excellence of its balanced frequencies: no other speaker system offered such cleanliness of sound over so long a range. It trumpets a vibrant vitality of timbre altogether unique in the reproduction of music."

© beim Hersteller
Archiv Michael-Otto

And now—

The Improved, Augmented Patrician IV 4-Way Speaker System...
for the lasting pleasure and pride
of the most discriminating music lover.

The epitome of tonal realism... design excellence... enduring beauty! Exclusive features, custom construction, and authentic styling are a credit to the owner's taste. Everyone is sure to admire the beautiful inlays, the selected woods, the Heirloom Finish in exquisite hand-rubbed veneers that reflect the personal pride of skilled craftsmen. The authentic French style grille is formed of lacquered metal in brass antique. Tailored to the corner of your living room, the Patrician conserves to the fullest the greater spatial requirements of highest fidelity.

Reproduction is so flawless... so living in its reality... that to hear the Patrician is to undergo a new emotional experience!

Unique in concept, the engineering design by Electro-Voice assures a soul-stirring perfection that will be fully appreciated by those who live most graciously!

The Patrician is made of finest hardwoods with hand-rubbed finish in either lustrous tropical Mahogany or sparkling Korina Blonde veneers.

The Patrician IV is 62 in. high, 39 in. wide and 29 in. deep. Net weight 310 lb, shipping weight 390 lb. Price, audiophile net \$772.50.

Freight is prepaid by the factory to the local dealer or drop shipment by Electro-Voice may be made to the user's address.

HERE ARE THE DETAILS OF PATRICIAN 4-WAY PERFORMANCE

In the design and development of the Patrician 4-way loudspeaker system, Electro-Voice has provided the discriminating listener the very finest loudspeaker system available. The standards of performance in the Patrician are unexcelled. In order to achieve the epitome of cleanliness and range, every design advantage has been exploited in the choice of multiple crossovers, specialized driver components and intricate interior acoustic design. "A majestic bulk of domestic architecture," writes Mr. C. G. Burke describing the Patrician in the Saturday Review Homebook of Recorded Sound and Music Reproduction.

PATRICIAN IV DRIVER COMPONENTS

LOW-BASS SECTION

Employing the Klipsch principle of folded corner-horn loading, the new Patrician IV utilizes an 18-in. low frequency driver, Model 18WK, housed in a "K" type reproducer scaled up 16 $\frac{2}{3}$ percent. The taper rate has been extended to 35 cps. The first three octaves, to the first crossover point at 200 cps, are reproduced by a tremendous bass driving section . . . the largest, most highly developed ever designed for a home audio system. When the Patrician is placed in a corner, the folded throat of the bass horn becomes part of the entire room, allowing the large wave lengths of the second and the upper part of the first audible octave to be formed properly.

MID-BASS SECTION

A separate horn employed as an indirect radiator with its two complementary Model 828HF driver units takes over for only the next 1 $\frac{1}{2}$ octave range to 600 cps. Because no metal horn presently developed satisfactorily reproduces down to 200 cps, the horn load for the intermediate bass drivers is fabricated of wood and phenolic tubes. These are a part of the overall interior assembly.

TREBLE SECTION

From 600 to 3,500 cps or the next 2 $\frac{1}{2}$ octaves, the Electro-Voice Model T25A treble driver exhausts into a 600-cycle Model 6HD diffraction horn. This diffraction horn is the latest design and employs the principles of optical diffraction to disperse high frequencies uniformly, without the losses typical of cellular and lens type horns. Thus, the important "presence" range is assured of complete and proper transmission by this specialized driving unit. Other frequencies, not a part of this range, are completely excluded.

VERY-HIGH RANGE

The range above 3,500 cps, extending beyond the range of hearing, is reproduced by the Model T35 Super-Sonax very-high-frequency driver. This driver, a recent Electro-Voice development, utilizes an integral diffraction horn. Through the Model T35, the remaining octaves of the upper audible register are completely accomplished with practically unmeasurable distortion.

CROSSOVER NETWORK

To allocate the various portions of the spectral energy to the respective driver units, the Model X2635 crossover network divides the amplifier power into four separate portions, and eliminates upper harmonic and intermodulation distortion from one driver in the region covered by the next.

MODEL 18WK
LF DRIVER



MODEL 828HF DRIVERS
WITH A8419 HORNS



MODEL T25A
HF DRIVER
WITH MODEL 6HD HORN



MODEL T35 VHF DRIVER



MODEL X2635
CROSSOVER



LISTENING CHARACTER



MID-BASS
TREBLE
VERY-HIGH
LEVEL CONTROLS

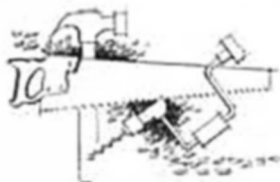
Realizing that the Patrician will be played only at those levels permissible in the living room of the average user, a careful compensation has been made for the sensitivity of the human ear when high orchestral volumes are played back at the lower living room levels. In order to balance the Patrician perfectly to the acoustics of the room and the listeners' taste, three controls are provided. These controls adjust the Very-High, Treble and Mid-Bass ranges to the Low-Bass section, permitting complete compatibility to any room size or condition. The result is a naturalness of reproduction unparalleled in the art today.

RECOMMENDATIONS FOR USE

It is essential that a high quality, distortion-free amplifier be employed with the Patrician system. The general specification for a good amplifier is that it have less than one percent distortion, that the record playback characteristic be capable of selection, and that it have adequate high and low-frequency tone-control boost and attenuation. The amplifier damping factor should be adjusted to 10; because of the high efficiency of the Patrician, no more than 20 watts of amplifier power is actually required, although two or three times this amount may be used if desired to insure ultimate amplifier cleanliness at room playing levels. Poor phonograph records will respond adversely because of the range of the Patrician. Accordingly, it is recommended that only the best and well-cared-for Vinylite phonograph records or tape be used.

ABOUT HOME CONSTRUCTION OF THE PATRICIAN

THE MODEL 103C PACKAGE PATRICIAN DRIVER COMPONENTS



The music lover or "do-it-yourself" audiophile may obtain only the driver components of the Patrician and purchase or fabricate the interior horn assemblies. Complete instructions are included in the 103C package of driver components and hardware, and with reasonable skill and a minimum of equipment the basic operating structure may be completed. The exterior housing is also detailed in these plans, but more skill is required to form the outer decorative enclosure and to apply the furniture finish. Because the outer housing is integrated with the interior assembly in the factory model, this decorative furniture assembly cannot be ordered separately from the factory. Metal grilles are not furnished by the factory as E-V retains these as pieces of its own manufacture; alternates are suggested in the plans.

The factory furnishes gratuitously the design for a 200 cps network to those who wish to use only the 18-in. driver and base section, while employing an existing coaxial driver for the top registers; in this manner, the listener enjoys increasingly fine reproduction while remaining parts of the Patrician are acquired over a period of time. The approach to the ultimate in reproduction is thus accomplished gradually in stride with the budget.

103C PACKAGE, 4-WAY DRIVER COMPONENTS

| | Audiophile Net |
|------------------------------------------------------------------------|-----------------|
| 1 - 18WK very-low-frequency driver..... | \$ 90.00 |
| *2 - A8419 low-frequency phenolic horn sections }..... | 60.00 |
| *2 - 828HF drivers..... | |
| 1 - T25A treble driver..... | 57.00 |
| 1 - 6HD 600 cps diffraction horn..... | 21.00 |
| 1 - T35 very-high-frequency driver..... | 33.00 |
| 1 - X2635 4-way crossover network..... | 72.00 |
| 1 - 8675 cable harness and 3 AT37 level controls and instructions..... | 15.00 |
| PRICE, TOTAL..... | \$348.00 |
| Shipping weight 106 lb | |

MODEL 115 KLIPSCH "K" TYPE BASIC LF DRIVER HORN

Basic very-low-frequency driver horn, including mid-bass exponential horn bell drilled to accept low-frequency horn sections. Black matte stain, will not take a furniture finish. Ready to operate with addition of 103C driver components.

| | |
|------------------------|-------------------------|
| PRICE..... | Audiophile Net \$180.00 |
| Shipping weight 150 lb | |

MODEL 103C-115 PATRICIAN UTILITY SYSTEM

Ready to be assembled with common tools.

| | |
|------------------------|-------------------------|
| PRICE..... | Audiophile Net \$528.00 |
| Shipping weight 256 lb | |

NOTE

Complete specifications on the individual components shown above are to be found in other E-V literature. Performance curves of the Patrician will be found in the forthcoming E-V high-fidelity catalog #117.

*Available only as complete set.

MODEL 103C IN MODEL 115

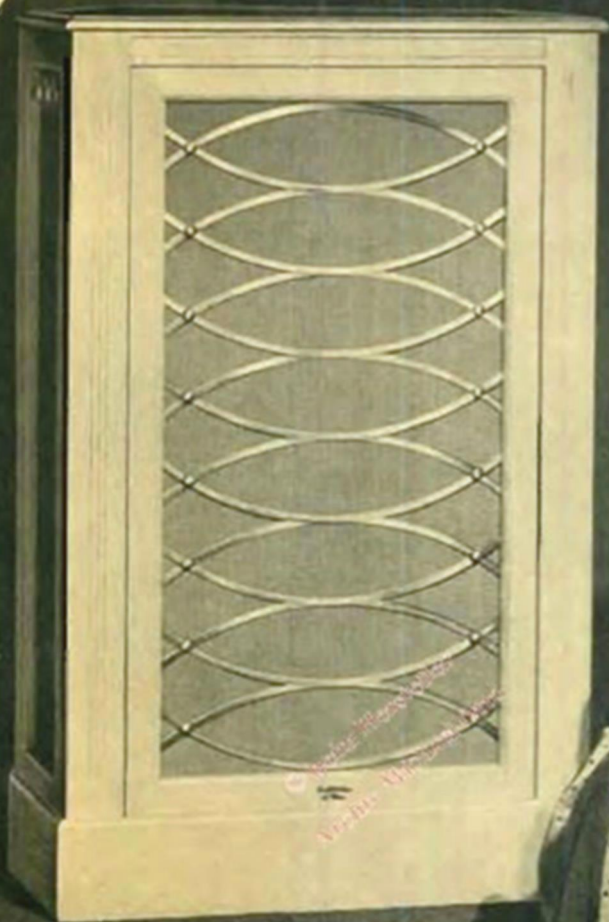


ELECTRO-VOICE, INC.
BUCHANAN, MICHIGAN
BULLETIN No. 220
PART No. 53223
PRINTED IN U.S.A.

THE SUPERB NEW

Patrician IV

4-WAY
LOUDSPEAKER SYSTEM



High Fidelity's Finest... Designed for the Most Discriminating Music Lover

Your living room becomes a concert hall as you listen enthralled to the superb *Patrician IV*. Originally selected by recognized authorities for "the excellence of its balanced frequencies and cleanliness of sound over so long a range"...the new, improved *Patrician IV* is even finer today than ever! Tailored to the corner of the room, the *Patrician IV*, with its folded horn and other E-V features, conserves to the fullest the greater spatial requirements of highest fidelity. With its unique, separate 4-way system, it provides a sweep and brilliance of reproduction that is unsurpassed—minimizes intermodulation and transient distortion—assures smoothest, most efficient handling of the full range of frequencies in the audio spectrum. Three special controls permit proper balance to room acoustics. Designed for enduring beauty in authentic styling—and custom-crafted of finest hardwoods with Blonde or Mahogany veneers in exquisite hand-rubbed finish.

Patrician IV. Complete 4-way speaker system, installed in Korina Blonde or Mahogany enclosure. Size: 62 in. high, 39 in. wide, 29½ in. deep. Audiophile Net: \$772.50

Write for Bulletin No. 220



No Finer Choice Than **Electro-Voice®**

ELECTRO-VOICE, INC. BUCHANAN, MICHIGAN • Export: 13 East 40th St., New York 16, U.S.A. Cables: Arlab
HIGH FIDELITY SPEAKER SYSTEMS, AMPLIFIERS, MICROPHONES, PHONO-CARTRIDGES, AND OTHER ELECTRO-ACOUSTIC PRODUCTS

THE INCOMPARABLE

Patrician IV



4-WAY
SPEAKER SYSTEM



*© beim Hersteller
Archiv Michael-Otto*

Electro-Voice

ELECTRO-VOICE, INC. • BUCHANAN, MICHIGAN