

**FEATURES**

- Flat response throughout the high-frequency range
- Efficiency ideal for compact system or other medium or low efficiency components
- Quick, convenient installation

**SPECIFICATIONS**

FREQUENCY RESPONSE: 1500 to 18,000 cps  
 NOMINAL IMPEDANCE: 8 ohms  
 POWER HANDLING CAPACITY: 20 watts program  
 VOICE COIL DIAMETER: 1"  
 MAGNET: 6.8 Alnico V  
 RECOMMENDED CROSSOVER FREQUENCY: 3500 cps  
 EIA SENSITIVITY RATING: 48 db  
 DIMENSIONS: Fig. 1  
 NET WEIGHT: 1 lb., 13 ozs.  
 SHIPPING WEIGHT: 2 lbs.  
 FINISH: Gold and ivory  
 BAFFLE OPENING: 3-15/16" diameter  
 MOUNTING: 4 1/8" holes equally spaced on 4-7/16" circle

**DESCRIPTION**

The Model TC35 cone-type high-frequency driver was designed in response to the demand for a tweeter with efficiency rating and dimensions compatible with compact loudspeaker systems. The TC35 exhibits a number of quality features which clearly set it apart from other small diameter loudspeakers and identify it as a fine quality reproducer.

The hallmark of any truly fine loudspeaker is a die-cast, rather than a stamped or drawn, frame. The TC35 is constructed in a high-pressure die-cast chassis. Jewel-like precision in final machining and assembly maintains absolute accuracy in positioning the all-important magnetic structure and moving assembly. The voice coil is formed of a double layer of silver-plated aluminum wire. This provides an excellent combination of low mass, excellent electrical conductivity and high efficiency. The voice coil is assembled directly to the one-piece cone and dome assembly, eliminating the necessity of a separate coil form, thus further reducing moving mass. The cone itself is suspended on a layer of polyurethane foam which provides optimum compliance and cone damping for smooth response throughout the very-high-frequency range.

The deluxe features and superb listening quality of the TC35 make it an ideal high-frequency driver for use in new systems or as an addition to existing ones. The solid-backed frame of the TC35 permits its use in the same enclosure used for other loudspeakers in the system, without the necessity for a separate, isolated compartment.

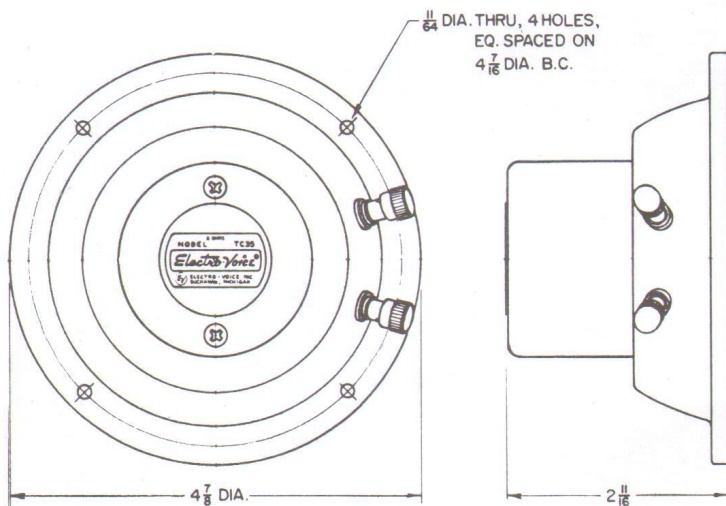


Figure 1 - Dimensions

Flat, peak-free response in the 3500 to 18,000 cps region is extremely important, since the overtones which allow the ear to distinguish between various musical instruments lie in this range. In addition, peakiness in this area will greatly aggravate reproduction of surface noise, tape hiss, etc. Conversely, smooth peak-free response eliminates listener fatigue and insures natural reproduction of all instruments and vocals. Stereophonic reproduction also imposes strict requirements on high-frequency drivers, since the two tweeters in a stereo system must be matched very closely to prevent "wandering instruments" or apparent displacement of the source. The wide, smooth response and uniform dispersion of the TC35 easily meet these requirements.

### INSTALLATION

Mounting of the TC35 requires a circular cutout of 3-15/16" diameter and four 1/8" mounting holes on a 4-7/16" diameter circle. It is not necessary to isolate the TC35 within the enclosure, as it is completely enclosed in the rear.

The mounting gasket and TC35 should be carefully aligned over the mounting holes and secured in place with four No. 6 screws, nuts and washers.

It is desirable to mount high-frequency drivers as near as possible to ear level. Avoid mounting tweeters closer to the floor than necessary, since high frequencies are more readily absorbed by carpets, furniture, etc.

### CONNECTIONS

The TC35 terminals are identified by red and black washers. Proper wiring is shown in Figure 2. For correct phasing, the lead from the black terminal should be connected to the Common crossover terminal, unless specified otherwise in specific system instructions. No. 18 "zip" or lamp cord is recommended for all system wiring.

### OPERATION

It is desirable, but not necessary to employ a level control, or attenuator, to permit adjustment of the TC35's output to match other components in the system. An L-pad such as the Electro-Voice Model AT37 is recommended. This control should be wired as shown in Figure 2 and mounted in a 3/8" hole on the enclosure back panel.

The best guide to proper setting of the control is a familiarity with the sound of live music. Most listeners will find it easy to balance the components of the system to conform to their personal taste. Advancement of the high-frequency level control will increase the output of the TC35 and increase the brilliance of the reproduced sound.

### SERVICE

Your TC35 is packed to provide protection well in excess of shipping requirements of the Interstate

Commerce Commission. In the rare event shipping damage does occur, contact the carrier, requesting inspection and instructions, or the dealer from whom the unit was purchased. The identification number of your TC35 is noted on the warranty registration card. This number should be recorded and used in any correspondence regarding your loudspeaker. The warranty card should be filled out and mailed to the factory within ten days after your purchase. Your TC35 is guaranteed without time limit against defects in original workmanship and materials. Should your loudspeaker become damaged or develop faulty operation from unusual conditions of use, Electro-Voice maintains a complete Service Department to return equipment to factory-new condition. If attention becomes necessary please write the Service Department, requesting return authorization and shipping instructions.

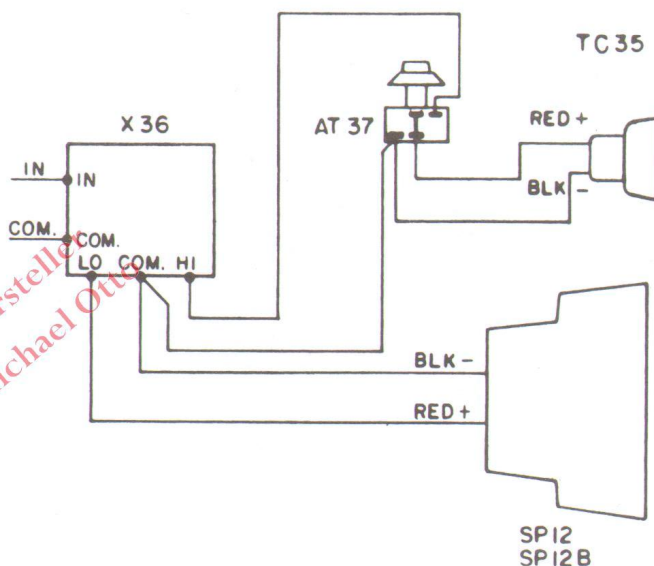


Figure 2 - Schematic of a Two-Way System

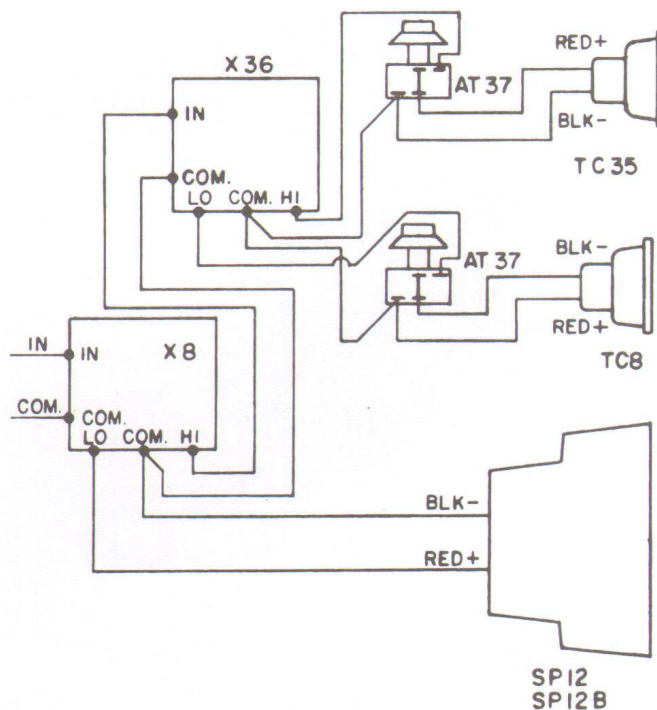


Figure 3 - Schematic Of A Three-Way System

