

**Dokorder**<sup>®</sup>  
DOKORDER HI-FI COMPONENTS

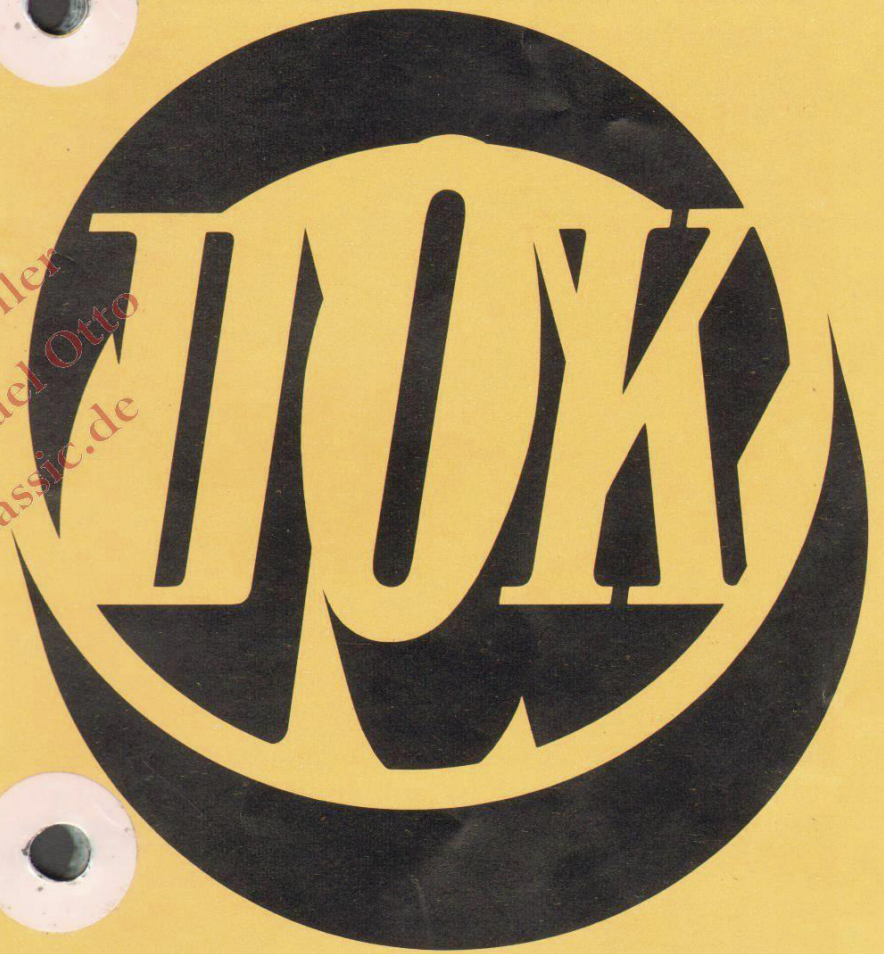
Authorized Agent in West Germany:

**MLC**

**MORITZ L. CHRAMBACH**

2000 Hamburg 1, Monckebergstrasse 17.

© beim Hersteller  
Archiv Michael Otto  
HiFi-Classic.de



*Stereo from the World's Largest Manufacturer of TV Deflection Components.*

**DENKI ONKYO CO., LTD.**

Audio Equipment Division:

1099, Sasabori, Okamura-cho, Isogo-ku, Yokohama, Japan

Head Office: 26-11, 3-chome, Nishi-Rokugo, Ota-ku, Tokyo, Japan

**AMERICAN DOKORDER**

Box 2494 Main P.O. Culver City, Calif. 90230, U.S.A.

Printed in Japan

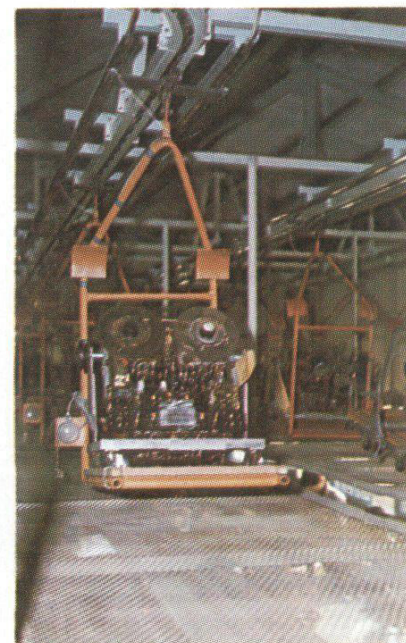
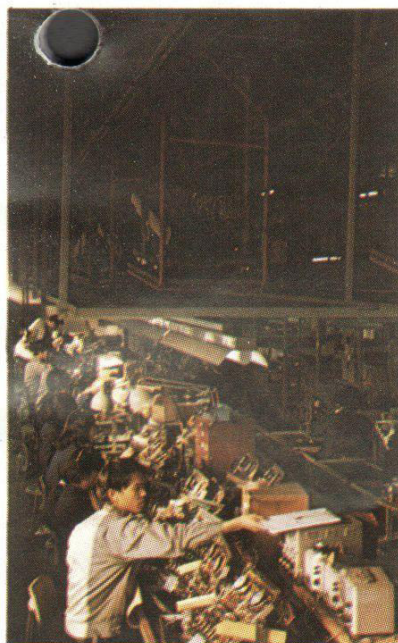
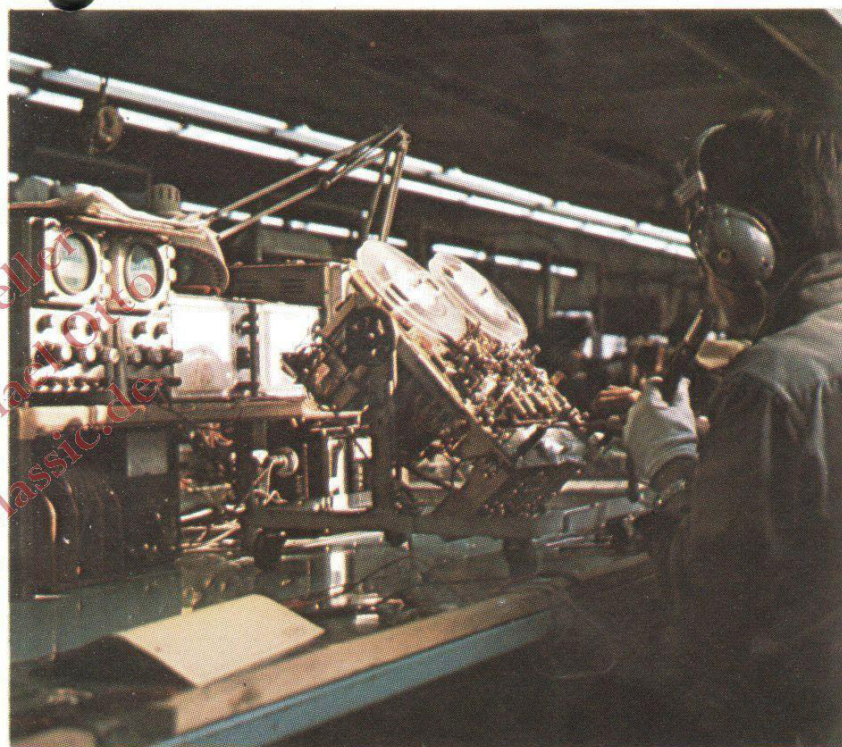
Welcome to the innovative world of Dokorder stereo components and systems. We're confident that after you review our product line on the following pages, you'll agree that ours is indeed an innovative world. One where man's knowledge of electronics is positively asserted in new product features, new designs, and a whole new standard in stereophonic craftsmanship and performance.

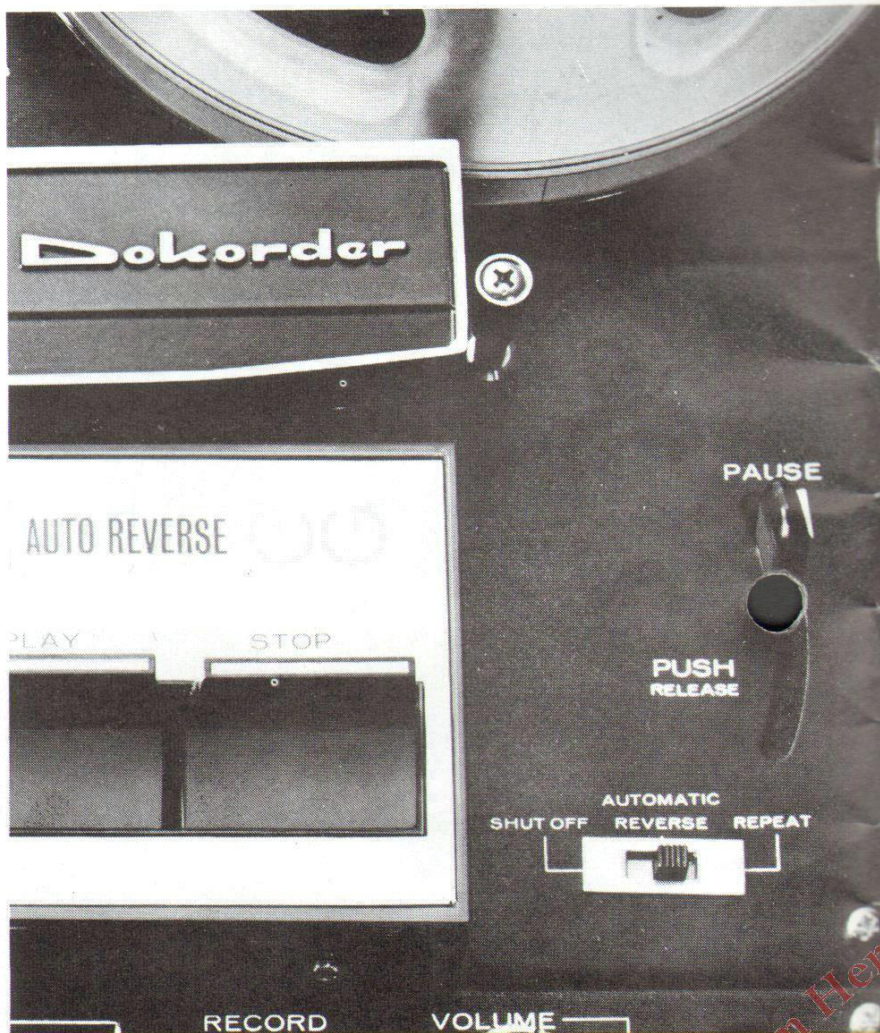
Chances are very strong that you may have already benefitted from our engineering. You see, we're the world's largest maker of precision television parts. We make deflection yokes, flyback transformers, convergence and vidicon yokes, and a lot more of the sophisticated parts that go into better color and black and white TV sets. Since these parts are bought by TV makers all over the world, we may have helped you to enjoy your favorite TV programs over the years.

More than a decade ago we decided to put our electronic knowhow to work for consumers in a more direct manner. We began to make stereo equipment. It proved to be a good decision when our engineers rewarded us with Japan's first transistorized tape recorder in 1958. Four years later, we followed up with another mild sensation: a 3-motor stereo tape recorder that automatically reversed itself in both recording and playback modes. And in 1968, we perfected a stereo tape recorder with a built-in tape dubbing system, an innovation that we felt was long overdue.

Today, of course, we're one of the world's fastest growing stereo makers. But it didn't happen overnight. We put in a lot of long, hard hours in trying to apply our knowledge of electronics to products that offered the consumer important features that other makers overlooked. We think we've succeeded.

After reviewing our full product line for yourself, we hope you'll agree.





# AUTOMATIC REVERSE

## Continuous Automatic Reverse

Developed and brought to perfection by Dokorder engineers, Continuous Automatic Reverse is now standard on many of our fine stereo tape recorder systems. Functioning in the recording as well as in the playback mode, it frees the operator from his "mother hen" role, lets him lean back and enjoy himself. There's no more anxious hovering to watch for tape ends or to reverse a reel. All that's necessary is to attach sensing strips to the tape ends. Then leave it to Dokorder. Another distinct advantage of the Dokorder system over other reversing systems is that we have closed the listening gap. With other systems, there is often a noticeable lag as the reversing process takes place. But Dokorder accomplishes it instantly. In split seconds. Recording or playback continue with virtually no detectable interruption. Another link in our unbroken record of superior stereo engineering achievements.

# DUB-A-TAPE

How original can you get? In tapes, thanks to Dokorder, as original as the original. With our exclusive Dub-A-Tape system, you don't copy tapes, you duplicate them. Precisely. Let's say you've spend hours recording and editing a given tape and you want to give a friend a copy. Or say a friend has a tape with some rare selections that you'd like to have. Until now, such a copy could only be made with the aid of two tape recorders operated so deftly as to achieve complete synchronization. But even then, if the speeds, wow and flutter characteristics of the recorders varied, the copied tape would often sound noticeably different from the original. But with the Dokorder Dub-A-Tape system, the copy tape is driven by a special mechanism built into the recorder itself, so that the copy produced has exactly the same speed, the same wow, the same frequency response characteristics as the original. In fact, it isn't really a copy at all. It's another original.

© beim Hersteller  
 Archiv Michael Otto  
 HiFi-Classic.de

# DCB-800

Four-story stereo. High-rise high fidelity. This is Dokorder's new vertical approach to professional stereo, a unique system that sets four distinguished components in a stack for exceptional operating and space-saving convenience. All components are engineered for superior performance and feature handsome black front panels. At the heart of the system is a fine Dokorder tape deck (Model 8020A) with famed Auto Reverse and Dub-A-Tape systems. The power is supplied by a high-fidelity 100 watt stereo control amplifier (Model 8060A) with the most advanced integrated circuitry. Next, is an AM/FM stereo tuner (Model 8070A) with exquisite FM sensitivity. Then comes a specially developed record player (Model DAC-8) with a moving magnetic cartridge and automatic record changer. In addition, a set of 3-way 4-speaker systems (Model SS-800) in handsome matching enclosures are provided. All components, of course, are designed for complete compatibility with one another. Innovative stereo from Dokorder. A value you can't afford to pass up.

© beim Hersteller  
Archi Michael Otto  
HiFi-Classik.de





## DC-9000

### DC-9000 Professional Fully Integrated Console Stereo System

The innovative world of Dokorder continues with this striking professional console system. It consists of 4-track stereo tape recorder with such refinements as Dokorder's Automatic Reverse System, Current Bias Control, three motors and six heads. It is carefully designed for complete compatibility with the other components in the system: a 100 watt, IC-equipped power amplifier, sensitive AM/FM Multiplex stereo tuner, and a precision turntable featuring a belt-drive system and oil-damped arm lifting mechanism.

#### SPECIFICATIONS

Recording system:	AC bias, 4-track stereo/mono recording and playback
Tape speed:	7½ & 3¾ ips
Frequency response:	20-21,000Hz at 7½ ips
Cross talk:	55dB
Wow & Flutter:	Less than 0.07% WRMS at 7½ ips
Motors & Heads:	three motors, six heads
AM/FM stereo receiver:	
Total music power:	100W at 4 ohms
Harmonic distortion:	0.5% at rated output
Frequency response:	10-100,000Hz 3dB
Turntable speed:	33⅓ & 45 rpm.
Wow & flutter:	Less than 0.08%
Signal to noise ratio:	Better than 45dB
Dimensions:	43¾"W × 25¾"D × 45⅝"H

## SS-9000

### SS-9000 Matching 3-Way 5-Speaker Stereo Speaker Systems

The SS-9000 speaker systems were designed to get the most out of the DC-9000 system. Capable of handling a full 80 watts in input, each enclosure houses five carefully selected speakers. Both console and speaker systems are finished in attractive rosewood.

#### SPECIFICATIONS

Speakers:	Woofer, two 10-inch cone type Midrange, horn type Tweeter, two horn type
Input impedance:	8Ω
Frequency response:	30-22,000Hz
Crossovers network:	3-way 12dB/oct. LC type
Dimensions:	26"W × 18¼"D × 38⅝"H



# 8010A

## 4-Track Stereo Tape Recorder with Continuous Automatic Reverse and Dub-A-Tape System

Never before has any professional quality tape recorder been able to do so much or to do it as well as this attractive 4-motor, 5-head model. Styled in handsome black and walnut, the 8010A features Dokorder's unique Dub-A-Tape system for a whole new standard in tape dubbing quality. To make the most of its Continuous Automatic Reverse feature, the 8010A offers automatic programming for Reverse, Stop and Repeat operations. Other features include solid state circuitry, 12 watts in power output, twin 4" x 6" monitor speakers, lockable pause control and complete compatibility with all other components in Dokorder's 8000 series.



# 8020A

## 4-Track Stereo Tape Deck with Continuous Automatic Reverse and Dub-A-Tape System

This one was designed for the enthusiast who already has a quality stereo system and has need for a tape deck with Dokorder's unique dubbing capability. Almost identical with the Dokorder 8010A in styling, dimensions and performance features, the 8020A comes without built-in monitor speakers and power amplifier. Like the 8010A, this handsome deck is completely compatible with other Dokorder 8000 series components, but it can be used to complete satisfaction in any top-quality stereo system.

© beim Hersteller  
Archiv Michael Otto  
www.HifiClassic.de

# 9010V

## Professional 4-Track Stereo Tape Recorder with Built-in 40 Watt Stereo Amplifier

In tape recorders, the Dokorder 9010V is as far as you can go in quality outside of studio recording equipment. Among its many professional features is a Bias Current Control which lets you control frequency response depending on program material, tape thickness or your own taste. Others include four oscillators, a built-in Demagnetizer, six heads, three motors, Automatic Continuous Reverse system, continuously controllable Fast Forward and Fast Reverse speeds, special tape tension Changeover Switch and many others. To compliment the unit's big 40 watts in power output, Dokorder offers the matching SS-91 2-way 2-speaker speaker systems at optional cost.



# 9020V

## Professional 4-Track Stereo Tape Deck with Bias Current Control

Identical to the Dokorder 9010V in all respects other than built-in 40 watt stereo amplifier, this unit is designed for the enthusiast who already has a stereo system. Among other features both the 9010V and 9020V share in common are: computer-type relay controlled operating buttons, newly designed pause switches, ball bearing tape guides, center capstan drive systems and fast 45 second rewind times for 1,200 foot reels of tape.





# 9050H

## Studio-Type 4-Track Stereo Tape Recorder with Built-in Monitor Speakers

This striking recorder brings you the latest in functional studio layout—fingertip control of all taping functions on the taping console and the overhead control panel—another Dokorder innovative breakthrough. Featuring professional bias control, built-in demagnetizer, mixing, echo and Sound-on-Sound recording capabilities, Automatic Continuous Reverse and all the other important features of the Dokorder 9010V, this recorder has been specially designed for immediate and responsive control. High performing twin 4" x 6" monitor speakers located in the overhead panel and built-in stereo amplifier make this unit an entirely independent recording system.



# 9060H

## Studio-Type 4-Track Stereo Tape Deck with Professional Bias Current Control

Designed as a top performing recording addition to existing stereo systems, the Dokorder 9060H brings all of the highly refined features of Dokorder 9000 series components to you within the latest studio-type design format. It is identical to the 9050H in all features with the exception of built-in stereo amplifier and monitor speakers. An additional feature not to be overlooked in this and all other 9000 series components is a special tape cleaner which has been provided directly in the tape path. This cleaner greatly helps to prevent deterioration of the component's frequency response.

© beim Hersteller  
Archiv Michael Otto  
Hifi Classic.de

# 6010

## 4-Track Stereo Tape Recorder with Built-in Monitor Speakers and Automatic Continuous Reverse System.

For the enthusiast looking for most of Dokorder's 8000 and 9000 recorder series features in a more compact and moderately priced model, the 6010 is it. From its professional styled black front panel to such features as the Dokorder Automatic Continuous Reverse system, Automatic Programming, pushbutton direction changers with indicator lamps, responsive one-touch tape controls, double safety lock system and one-hand tape threading convenience, the 6010 is without peer in its price range. Designed for independent usage or for use in existing stereo systems, the 6010 is equipped with a 12 watt stereo amplifier and built-in 4" x 6" monitor speakers.



© beim Hersteller  
Archiv Michael Otto  
HiFi-Classik.de

# 6020

## 4-Track Stereo Tape Deck with Dokorder's Famed Automatic Continuous Reverse System

Lacking only the 6010's stereo amplifier and built-in monitor speakers, this solid state tape deck brings to your stereo system high priced features without the high price you'd expect to pay for them. In addition to those features listed for the 6010, both models feature a lockable pause control that keeps both of the operator's hands free of the unit during pauses, both feature built-in stereo-phone amplifiers for private listening with headphones, each is equipped with a four digit tape counter and both are housed in handsome walnut cabinets.



### SPECIFICATIONS OF MODEL 8010A AND 8020A

Recording system: AC bias 4-track stereophonic and monophonic  
Tape speed: 7½ ips and 3¾ ips  
Frequency response: 20–20,000Hz at 7½ ips, 40–12,000Hz at 3¾ ips  
Signal to noise ratio: Better than 50dB at 7½ ips  
Crosstalk: 55dB  
Wow and flutter: Less than 0.12% WRMS at 7½ ips  
Less than 0.15% WRMS at 3¾ ips  
Bias frequency: 70,000Hz  
Tone control: Two separate treble control  
Power output: Model 8010A 12 watts music power  
Monitor speaker: Model 8020A 2 speakers, 4×6 inches  
Circuit compliment: Model 8010A 22 transistors, 7 diodes  
Model 8020A 14 transistors, 7 diodes  
Level indicators: Dual illuminated VU meters  
Heads: Five, 2 rec/play, 2 erase, 1 dubbing  
Motors: Four, 1 synchronous capstan, 2 capacitor reel and 1 capacitor dubbing  
Max. reel size: 7 inches  
Power requirement: 100, 110-117, 125, 200, 220, 240V AC  
50 or 60Hz  
Dimensions: 14½"W×7½"D×21¼"H  
Weight: Model 8010A 48 lbs. Model 8020A 45 lbs.

### SPECIFICATIONS OF MODEL 9050H AND 9060H

Recording system: AC bias, 4-track stereo/mono recording and playback  
Tape speed: 7½ ips and 3¾ ips  
Reel capacity: 7" or smaller  
Frequency response: 20–21,000Hz at 7½ ips, 40-15,000Hz at 3¾ ips  
Signal-to-noise ratio: Better than 50dB at 7½ ips  
Crosstalk: 55dB  
Wow and flutter: Less than 0.07% WRMS at 7½ ips  
Less than 0.12% WRMS at 3¾ ips  
Power requirement: AC 100, 110-117, 125, 200, 220 or 240V;  
50 or 60Hz; 160 watts  
Bias frequency: 100,000Hz  
Power output: Model 9050H 4 watts music power  
Circuit complement: Model 9050H 35 transistors, 9 diodes  
Model 9060H 27 transistors, 8 diodes  
Fast forward and rewind time: Less than 45 seconds (1,200-foot tape/60Hz),  
with sliding control at maximum position  
Level indication: 2 illuminated VU meters  
Heads: Six, 2 erase, 2 record, 2 playback  
Motors: Three, 1 synchronous capstan and  
2 capacitor reel  
Weight: Model 9050H 55 lbs.  
Model 9060H 47.3 lbs.  
Dimensions: Model 9050H 17¾"W×15¼"D×18½"H  
Model 9060H 17¾"W×15¼"D×23¾"H

### SPECIFICATIONS OF MODEL 9010V AND 9020V

Recording system: AC bias, 4-track stereo/mono recording and playback  
Tape speed: 7½ ips and 3¾ ips  
Reel capacity: 7" or smaller  
Frequency response: 20–21,000Hz at 7½ ips, 40-15,000Hz at 3¾ ips  
Signal to noise ratio: Better than 50dB at 7½ ips  
Crosstalk: 55dB  
Wow and flutter: Less than 0.07% WRMS at 7½ ips  
Less than 0.12% WRMS at 3¾ ips  
Power requirement: AC 100, 110-117, 125, 200, 220 or 240V; 50 or  
60Hz, 160 watts  
Bias frequency: 100,000Hz  
Power output: Model 9010V 40 watts music power  
Circuit complement: Model 9010V 35 transistors, 9 diodes  
Model 9020V 27 transistors, 8 diodes  
Fast forward and rewind time: Less than 45 seconds (1,200-foot tape/60Hz),  
with sliding control at maximum position  
Level indication: 2 illuminated VU meters  
Heads: Six, 2 erase, 2 record, 2 playback  
Motors: Three, 1 synchronous capstan and  
2 capacitor reel  
Weight: Model 9010V 48.4 lbs.  
Model 9020V 47.3 lbs.  
Dimensions: 17½"W×7"D×19½"H

### SPECIFICATIONS OF MODEL 6010 AND 6020

Recording system: AC bias, 4-track stereo/mono recording and playback  
Tape speed: 7½ ips and 3¾ ips  
Reel capacity: 7" or smaller  
Frequency response: 20–20,000Hz at 7½ ips  
40–12,000Hz at 3¾ ips  
Signal-to-noise ratio: Better than 50dB at 7½ ips  
Cross talk: 55dB  
Harmonic distortion: Less than 2.5% at normal recording level  
Wow and flutter: Less than 0.12% WRMS at 7½ ips  
Less than 0.15% WRMS at 3¾ ips  
Power requirement: AC 100, 110-117, 125, 200 or 240V; 50 or 60Hz  
Model 6010 100 watts  
Model 6020 90 watts  
Bias frequency: 70,000Hz  
Power output: 12 watts music power (Model 6010 only)  
Circuit complement: Model 6010 22 transistors, 7 diodes  
Model 6020 14 transistors, 7 diodes  
Level indication: Dual illuminated VU meters  
Heads: Four, 2 erase and 2 rec/play  
Motors: Three, 1 synchronous capstan and  
2 capacitor reel  
Dimensions: 14½"W×7½"D×16"H  
Weight: Model 6010 38 lbs. Model 6020 35 lbs.

© beim Hersteller  
Archiv Michael Otto  
HiFi-Classic.de



# 8080A

## Solid State Stereo Cartridge Tape Player

Simplicity is the key to the design of this high-performing 8-track stereo cartridge component. There are only two controls on the front panel: a selector switch which allows you to choose any one of the four programs in a tape cartridge, and an Auto/Repeat switch which allows you to play all four programs consecutively or to repeat the same program over and over. Just insert a cartridge into the 8080A's dust-proof cartridge compartment, push the program selector button, using the indicator lamps as a guide, then program the unit's Auto/Repeat switch as desired.

### SPECIFICATIONS

Track system:	8-track, 2-channel
Track changing:	Automatic (sensing pole system) and manual
Tape speed:	3 $\frac{3}{4}$ ips
Line output:	2 line (0.775V)
Frequency response:	40-8,500Hz
Power requirement:	100, 110-117, 125, 200, 220, 240V AC, 50 or 60Hz
Dimensions:	14 $\frac{1}{2}$ "W x 7 $\frac{1}{2}$ "D x 4 $\frac{1}{8}$ "H
Weight:	12 lbs.



# 8090A

## Solid State Stereo Cassette Tape Recorder

Cassette convenience and Dokorder quality are yours in this highly functional 8000 series component. Just insert your favorite pre-recorded stereo cassette tape and hear it better than ever before. Or, record your own stereo selections directly off the air (when the 8090A is used with models 8060A and 8070A), or make your own stereo recordings utilizing the 8090A's twin microphone jacks. Convenient pushbutton operation and professional VU meters optimum recording quality.

### SPECIFICATIONS

Recording system:	AC bias
Erasing system:	AC erase
Track system:	4-track stereo cassette
Tape speed:	1 $\frac{7}{8}$ ips
Circuit complement:	14 transistors, 6 diodes
Frequency response:	40-10,000Hz
Power requirement:	100, 110-117, 125, 200, 220, 240V AC, 50 or 60Hz
Dimensions:	14 $\frac{1}{2}$ "W x 7 $\frac{1}{2}$ "D x 4 $\frac{1}{8}$ "H
Weight:	12 lbs.

© beim Hersteller  
Archiv Michael Otto  
HiFi-Classic.de

# 8060A

## 100 Watt Solid State Control Amplifier with IC Circuitry

This is the heart of all the components in the Dokorder 8000 series. Connect all the others to it and you have the world's most complete and versatile stereo system. Incorporating a pair of ICs for greater stability and lower distortion, the 8060A offers 100 watts in power output at 4 ohms, an exceptionally wide 15 to 50,000Hz power bandwidth and a harmonic distortion factor of a miniscule 0.5% at rated output. In addition, it offers six outputs and four inputs, a two speaker system selector, a power transistor protection circuit and easy to use controls, including the latest sliding graphic type for independent volume control of each channel.

### SPECIFICATIONS

Music power:	50W/50W at 4 ohms
Continuous power:	40W/40W at 4 ohms
Harmonic distortion:	0.5% at rated output
Frequency response:	10-100,000Hz $\pm$ 3dB
Input:	Phono, Tuner, Tape, Aux, DIN
Tone control:	Bass, Treble
Low filter:	50Hz -10dB
High filter:	10KHz -10dB
Power requirement:	100, 110-117, 125, 200, 220, 240V AC, 50 or 60Hz
Dimensions:	14½"W x 7½"D x 4¾"H
Weight:	14 lbs.



# 8070A

## Solid State AM/FM Stereo Tuner with FET Circuitry and Automatic Stereo Switching

Special silicon transistors and the latest FET circuitry combine to make this sensitive tuner at home in either highly congested signal areas, or in areas where signals are extremely weak. Its long tuning scales, complete with spotlight dial and separate fine tuning meter, make both AM and FM station selection more accurate and convenient than ever. An advanced FM MPX circuit lets the 8070A switch from FM Mono to FM Stereo broadcasts automatically, and in the process, activates a stereo indicator lamp. For improved quality of broadcasts being received, the 8070A also features built-in muting and AFC circuits.

### SPECIFICATIONS

Frequency range:	FM: 88-108MHz AM: 535-1,605KHz
Usable sensitivity (I.H.F.):	FM: 4 $\mu$ V AM: 10 $\mu$ V
Frequency response:	FM: 20-20,000Hz $\pm$ 2dB
Harmonic distortion:	FM: 1%
Signal to noise ratio:	FM: 55dB 500 $\mu$ V, 400Hz, 100% Mod.
Stereo separation:	FM: 35dB
Antenna input:	FM: 300 ohms (balanced)
Power requirement:	100, 110-117, 125, 200, 220, 240V AC, 50 or 60Hz
Dimensions:	14½"W x 7½"D x 4¾"H
Weight:	10 lbs.



© beim Hersteller  
Archiv Michael Otto  
HiFi-Classic.de

# 800X

## World's Most Complete Stereo Receiver

200 Watt AM/FM Multiplex Stereo Receiver with IC and FET Circuitry. This is perhaps the greatest single value in all of stereo today. A 200 watt receiver with elaborate IC, FET and all-silicon transistor circuitry, the 800X features a "pull-out" control panel that houses Bass and Treble, Mode, Loudness, High and Low Filter, AFC, Muting and Speaker Selector controls. It also features pushbutton function controls and the latest graphic type for Volume and Balance. Altogether the 800X is capable of driving up to five speaker systems, plus all the other components that make up a great stereo system. In performance, the 800X is peerless. Check out the specifications for yourself.

### SPECIFICATIONS

#### TUNER SECTION

Frequency range: FM: 88-108MHz / AM: 535-1,605KHz  
Sensitivity (I.H.F.): FM: 1.5 $\mu$ V / AM: 5 $\mu$ V  
Stereo separation: 35dB at 1KHz

#### AUDIO SECTION

Total music power (I.H.F.): 200W  $\pm$ 1dB (4ohms)  
Continuous power (per channel): 75W/75W  $\pm$ 1dB (4ohms)  
Harmonic distortion: Less than 0.8% at rated output  
Frequency response: 15-100KHz  $\pm$ 3dB (AUX)  
High filter, Low filter:  
Dimensions: 20"W  $\times$  14"D  $\times$  6 $\frac{3}{4}$ "H  
Weight: 33 lbs.

# MS-301

## Dokorder Compact Components

40 Watt Modular Stereo System with Built-in AM/FM Stereo Tuner, Turntable and Cassette Tape Recorder. Nowhere will you find a modular stereo system that is quite as complete as the Dokorder MS-301. In addition to a 3-FET Tuner section, 4-speed record changer and matching 2-way speaker systems, the MS-301 features a built-in stereo cassette tape recorder. With it, you can record FM stereo broadcasts directly off the air, you can tape your favorite stereo records, or you can plug in a pair of microphones and make your own stereo recordings. In addition to its unquestionable versatility, the MS-301 offers a big 40 watts in rich music power and is so compact that it is the closest thing yet to a portable stereo system.

### SPECIFICATIONS

#### TUNER AMP. SECTION

Circuit: Quasi complementary single ended push-pull circuit 3 FET, 23 silicon transistors, 16 diodes  
Tuning range: FM 88-108MHz / AM 535-1,605KHz  
Sensitivity: FM 5 $\mu$ V (S/N 30dB)  
AM 40 $\mu$ V (S/N 20dB)  
Separation FM, MPX: Better than 25dB  
Output: 20W + 20W peak music power  
10W + 10W continuous power  
30-50KHz  $\pm$ 3dB

#### CASSETTE SECTION

Recording system: AC Bias, AC Erase  
Wow and flutter: less than 0.25%  
Frequency response: 30-10KHz  
Signal to noise ratio: Better than 40dB





# SS SERIES

## Dokorder SS Series Speaker Systems

Even the finest audio components will not perform up to specifications if they are not properly matched with equally good speaker systems. And Dokorder engineering assures that this will never happen to people who buy and use Dokorder products. Innovation and craftsmanship are an important part of each of the speaker systems in the Dokorder line. From the omni-directional SS-200 and SS-202, to the attractive SS-312, SS-310 and SS-308, there's a custom-crafted system for every stereo need.

### SS-200 Powerful 60 Watt Omni-Directional 4-Way 5-Speaker Systems:

Speakers: Woofer, 12-inch cone type  
Midrange, two 5-inch cone type  
Tweeter, 3-inch cone type  
Super Tweeter, 3-inch horn type

Input impedance: 8Ω  
Frequency response: 30–20,000Hz  
Crossovers: 600, 3,300 & 6,600Hz  
Dimensions: 22" in diameter × 26"H  
Weight: 66 lbs.

### SS-202 Omni-Directional 30 Watt 3-Way 3-Speaker System

Speakers: Woofer, 10-inch cone type  
Midrange, 5-inch cone type  
Tweeter, 3-inch horn type

Input impedance: 8Ω

Frequency response: 30–20,000Hz  
Crossovers: 1,500 & 5,000Hz  
Dimensions:  
Weight:

### SS-312 Powerful 60 Watt 4-Way 5-Speaker System

Speakers: Woofer, 10-inch cone type  
Midrange, 5-inch cone type  
Tweeter, two 3-inch cone type  
Super Tweeter, 3-inch horn type

Input impedance: 8Ω  
Frequency response: 35–20,000Hz  
Crossovers: 750, 3,000 & 6,000Hz  
Dimensions: 15¾"W × 12"D × 26⅝"H

### SS-310 40 Watt 3-Way 3-Speaker System

Speakers: Woofer, 12-inch cone type  
Midrange, 5-inch cone type  
Tweeter, Super type

Input impedance: 8Ω  
Frequency response: 40–20,000Hz  
Crossovers: 800 & 5,000Hz  
Dimensions: 13¼"W × 11⅝"D × 22¼"H  
Weight: 26.4 lbs.

### SS-308 25 Watt 3-Way 3-Speaker System

Speakers: Woofer, 8-inch cone type  
Midrange, 5-inch cone type  
Tweeter, Super type

Input impedance: 8Ω  
Frequency response: 45–20,000Hz  
Crossovers: 1,500 & 5,000Hz  
Dimensions: 13"W × 10"D × 20¼"H  
Weight: 19.8 lbs.



# HS-303D

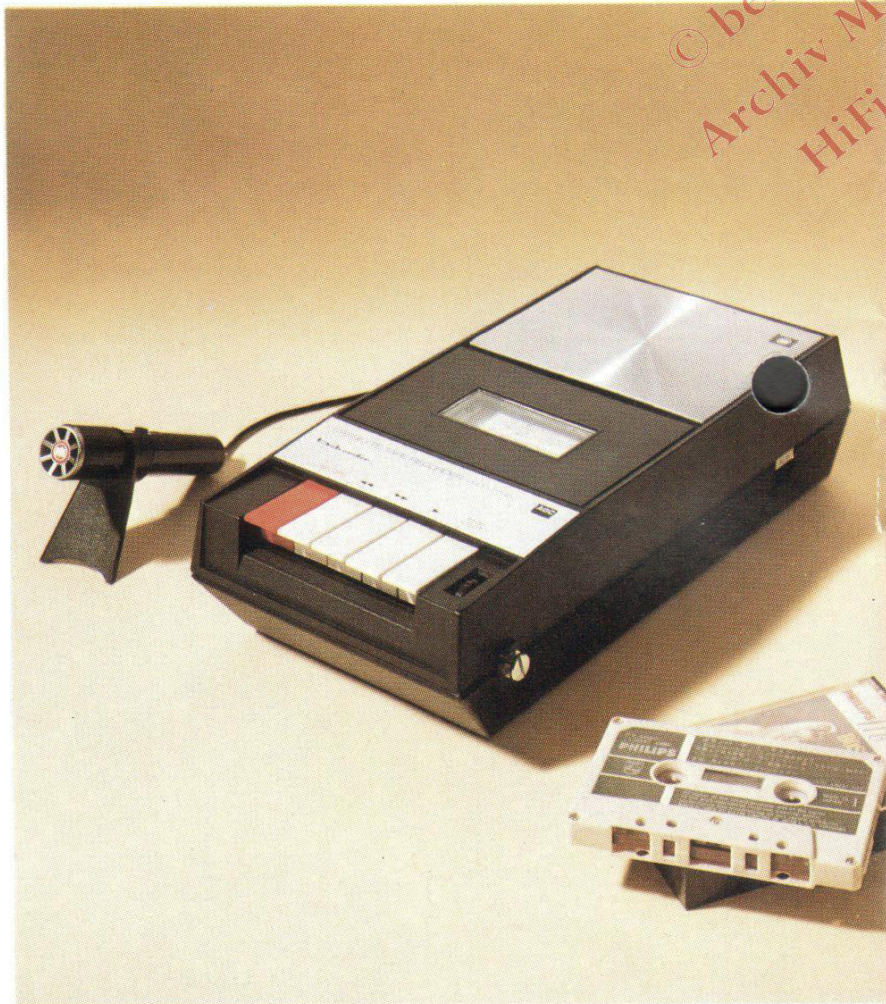
## Dokorder Options that Make a Difference Super-Sensitive 2-Way Stereo Headphone Set

Plug this attractive unit into your Dokorder system for greater sound realism at every frequency level. Stereo for your ears alone. The HS-303D gives you a wide frequency response range, higher sensitivity, independent volume control of each channel and optimum wearing comfort.

### SPECIFICATIONS

Sensitivity:	Better than 100dB at 1,000Hz, 1mW
Frequency response:	15-23,000Hz
Impedance:	Switchable 8-16 ohms, 20 Kohms, each channel
Volume control:	40 ohms, 1W in each phone
Weight:	1 lbs. (with connectig cord)

© beim Hersteller  
Archiv Michael Otto  
HiFi-Classic.de



# PT-45

## Portable Cassette Tape Recorder that Operates on Three Different Power Sources

Here's a convenient cassette recorder that's at home wherever you go because it gives you the same high performance whether you use regular batteries, a 12 volt car or boat battery, or economical house current. And it gives it to you instantly, without requiring any warm-up time. Responsive piano-key control or one-finger remote control via a switch on the microphone. A special AGC circuit is built-in to automatically adjust for optimum sound level during recording. For private listening, an earphone is provided. Other accessories include a microphone with remote switch, a C-30 cassette tape, four "C" size batteries and attractive carrying.

### SPECIFICATIONS

Recording system:	AC bias, Automatic gain control
Tape speed:	1 $\frac{7}{8}$ " ips
Frequency response:	100-10,000Hz
Wow & Flutter:	Less than 0.25% WRMS
Output:	2W (peak music power)
Power requirement:	AC 100-120/200-240V, 50 or 60Hz DC 6V (Four C size dry batteries) DC 12V (Car battery available through adaptor)
Dimensions:	3 $\frac{5}{8}$ "W x 16"D x 2 $\frac{3}{4}$ "H
Weight:	4 lbs.

# DX-205 <sup>1</sup>

## Sensitive Non-Directional Microphone

Impedance: 600Ω  
Sensitivity: -76dB  
Frequency response: 80-12,000Hz

# DX-195D <sup>2</sup>

## Versatile Uni-Directional Microphone

Impedance: 10kΩ  
Sensitivity: -60dB  
Frequency response: 100-12,000Hz

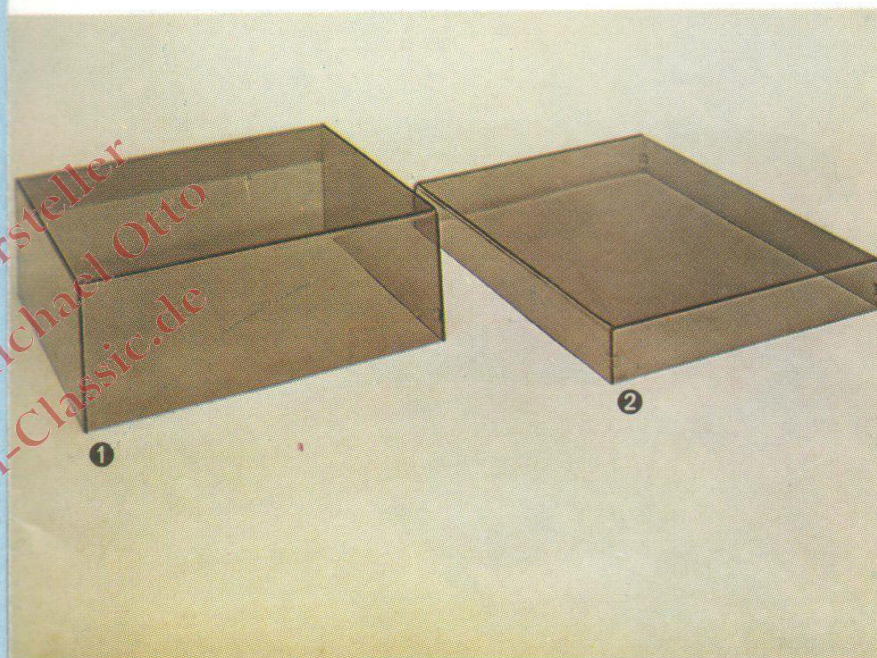


# D-9 <sup>1</sup>

Acryl Dust Cover for 9000 Series Tape Recorders and Decks

# D-8C <sup>2</sup>

Acryl Dust Cover for Model DCB-800



© beim Hersteller  
Archiv Michael Otto  
HiFi-Classic.de

# RC-9 <sup>1</sup>

## Remote Control Unit for 9000 Series Components

Designed especially for all Dokorder components in the 9000 series, this remote control device gives added versatility during taping assignments.

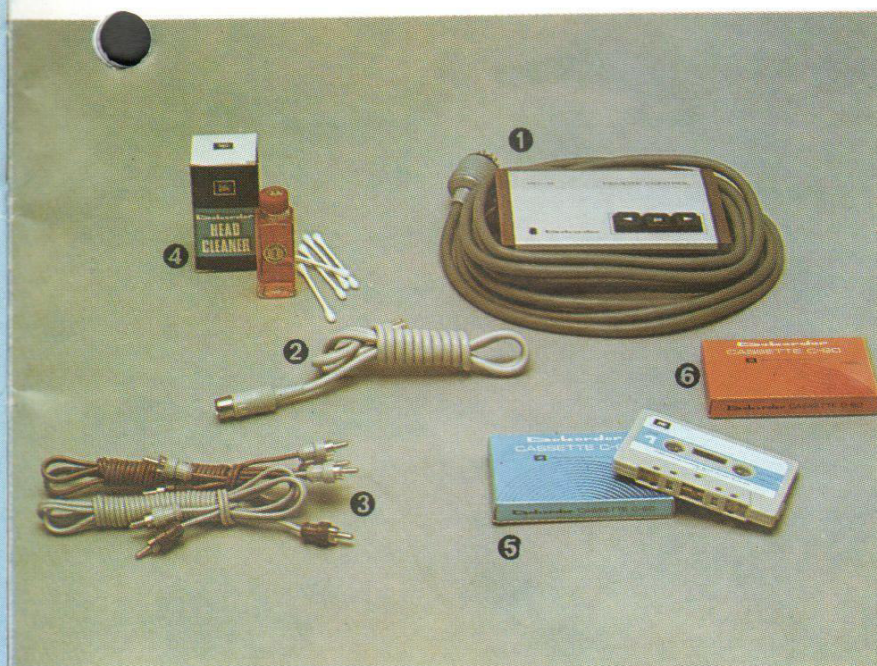
# CC-10 <sup>2</sup> DIN Connector Cable

# CC-20 <sup>3</sup> Pin Plug Cable

# HC-401 <sup>4</sup> Tape Head Cleaner

# C-60 <sup>5</sup> 60-Minute Cassette Tape

# C-90 <sup>6</sup> 90-Minute Cassette Tape



MEMO

MEMO

© beim Hersteller  
Archiv Michael Otto  
HiFi-Classic.de

AVAILABLE COMBINATIONS OF

TAPE DECKS

AMPLIFIERS  
&  
RECEIVERS

TUNER

8020A

6020

9020V

9060H

8080A

8090A

8060A

800X

8070A

DOKORDER HI-FI COMPONENTS

TURNTABLE

SPEAKER  
SYSTEMS

HEADPHONES

SS-200

SS-202

SS-308

SS-310

SS-312

DAC-8

HS-303D

© beim Hersteller  
Archiv Michael Otto  
HiFi-Classic.de