

CORAL

# FLAT SERIES

FLAT-5 / FLAT-6 / FLAT-8 / FLAT-10



Models FLAT-5 and FLAT-6 are the result of a wealth of experience and many years of fundamental research by CORAL—a specialized maker of acoustic equipment. The excellent acoustic performance of CORAL speakers have been highly appreciated by open-comparison audition with competitive brands. Responding to public encouragement and user demands, the CORAL engineering staff developed the FLAT-8 and FLAT-10 through their superior technical know-how.

# FLAT SERIES

1. A speaker's acoustic performance is greatly effected by vibration characteristics of its system component. Among all the components, the paper cone plays a particularly important role. The FLAT Series employ paper cones made of pulp mixed with chemical fibers, specially molded by a most advanced molding machine. Combined with its large diameter, these excellent-quality paper cones deliver rich, full-bodied bass and distortion-free, sonorous midrange realism.
2. Copper-clad aluminum wire, employed with

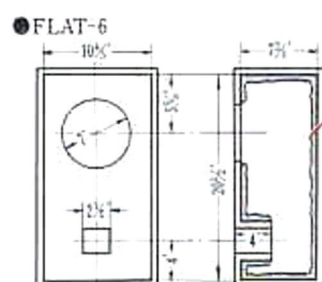
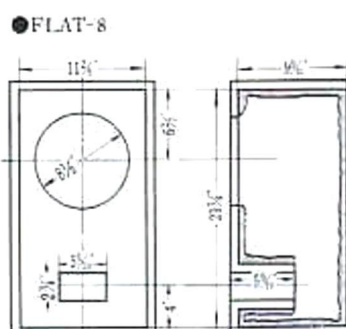
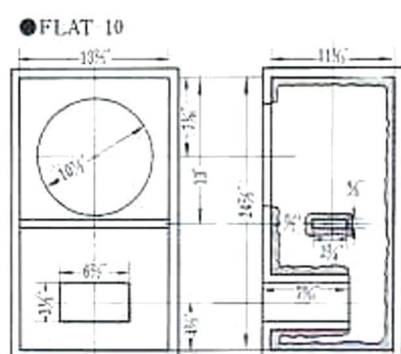
good results in the CORAL Beta Series, has made it possible to use long voice coils, thus reducing amplitude distortion, and definitely eliminating cross-modulation distortion.

3. Thanks to the use of a powerful ceramic magnet, the FLAT Series boast high-efficient, outstanding transient characteristics.
4. The diaphragm employs a dome made of hard-but-lightweight alloy, improving directional characteristics in the extrahigh-frequency range, offering excellent tonal

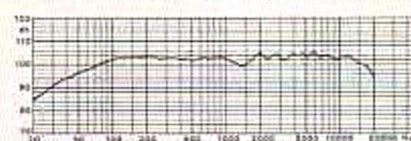
rendition which never "fatigues" the listener over long periods.

5. The conventional method of mounting a speaker on a baffle results in generation of cavity resonance, because of the depth of holes on the baffle, which in turn causes dips and peaks in midrange reproduction. To solve this problem, a flat mounting method based on using a prominent frame has been adopted for the FLAT Series. Consequently, distortionless reproduction is achievable over the area from midrange to high frequency.

## CABINET DIMENSIONS:



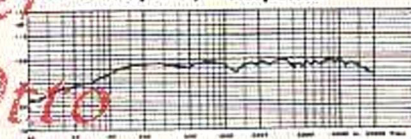
FLAT-10 Frequency Response



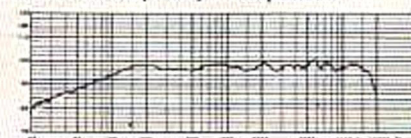
FLAT-8 Frequency Response



FLAT-6 Frequency Response



FLAT-5 Frequency Response

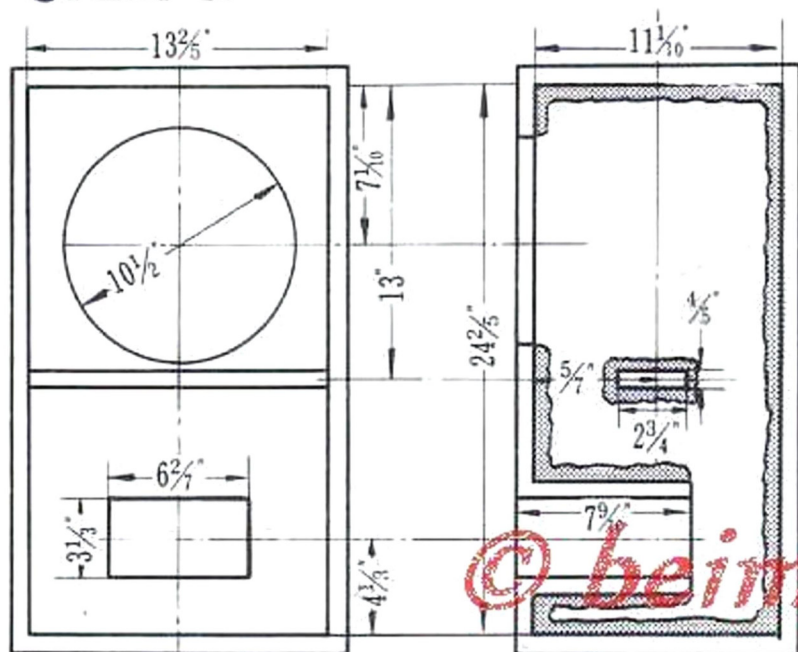


Apply acoustic material (glass wool or felt) all over the interior in wavy form. Use Saran net which is small in acoustic absorptivity. Install the Saran net tightly to prevent its vibrating from sound pressure.

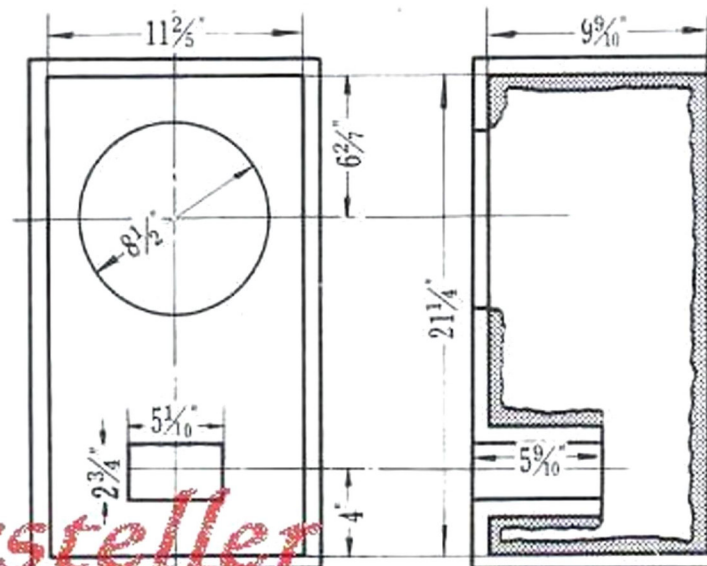
*© beim Hersteller Archiv Michael-Otto*

Specifications	FLAT-10	FLAT-8	FLAT-6	FLAT-5
Nominal size	10"	8"	6-1/2"	5"
Impedance	8 Ω	8 Ω	8 Ω	8 Ω
Min. resonance frequency (fo)	35 Hz	40 Hz	45 Hz	70 Hz
Power input	20 W	15 W	10 W	8 W
Sensitivity	102 dB	101 dB	98 dB	97 dB
Frequency response	35 ~ 20,000 Hz	40 ~ 20,000 Hz	45 ~ 20,000 Hz	70 ~ 18,000 Hz
Magnetic flux density	12,000 gauss	12,000 gauss	11,000 gauss	11,000 gauss
Qo	0.5 (35 Hz)	0.5 (40 Hz)	0.52 (45 Hz)	0.55 (70 Hz)
Equivalent mass	0.62 oz	0.36 oz	0.23 oz	0.11 oz
Diameter	11-9/10"	9-3/4"	8"	6-1/3"
Depth	4-1/8"	3-7/10"	2-9/10"	2-1/6"
Dimension of baffle opening	8-9/10" (10-2/5")	7-1/10" (8-1/2")	5-3/5" (7")	4-1/4" (5-1/2")
Mounting hole dimension	9-1/2" (11")	7-3/5" (11-4/5")	6-1/10" (7-2/5")	4-7/10" (5-4/5")
Magnet weight	1 lb 10 oz	1 lb 4 oz	14 oz	8 oz
Total weight	6 lbs 30 oz	4 lbs 7 oz	3 lbs 1 oz	1 lb 11 oz

● FLAT-10



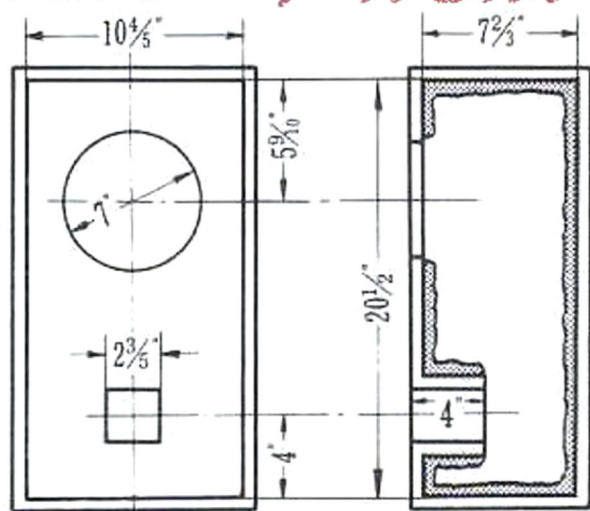
● FLAT-8



*© beim Hersteller*

*Archiv Michael Otto*

● FLAT-6



● FLAT-5

