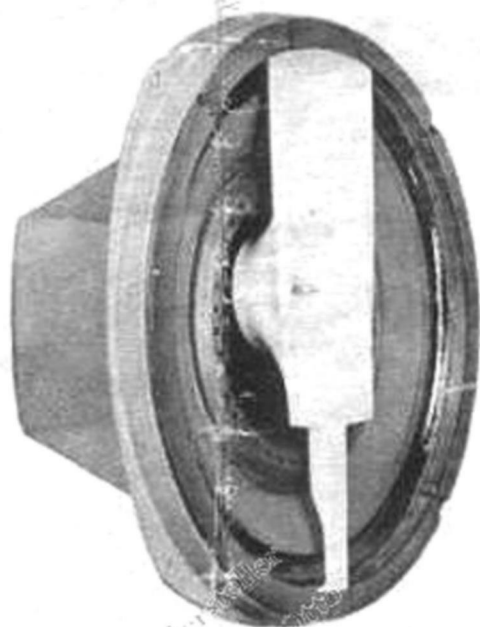


Coral[®]

12-inch 3-way Hi-Fi Speaker

12TX-50



CORAL Model 12TX-50 is literally an extra special loud speaker that is engineered and completed for use with the highest grade home and professional hi-power system. The CORAL'S exclusive mechanical two-way construction of the midrange and the bass plus the highly durable super horn type tweeter make the 12TX-50 the world best ever made in its price range. Indeed, durability and hi-fidelity coexist in 12TX-50.

GENERAL

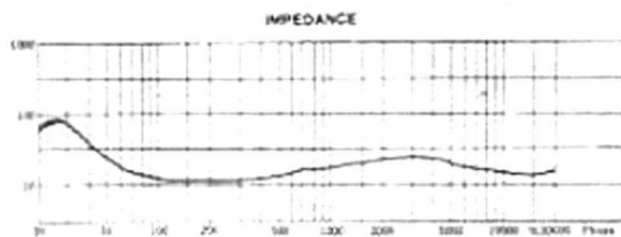
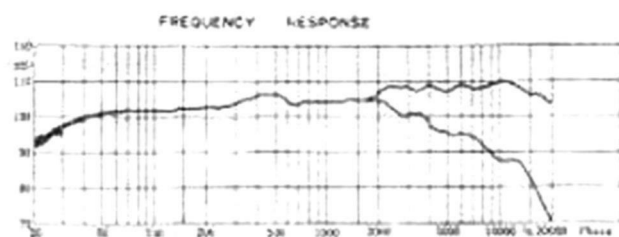
CORAL's experience and technique in the field of large size loud speaker have completed this superior product, which features:

- 1) Bass Speaker (Woofers) The most important part of the bass unit in the multi speaker, that is the cone diaphragm, is exclusively developed by CORAL, and its special "Skiver" edge suspension driven by the powerful magnetic circuit helps deliver perfectly damped heavy bass.
- 2) Midrange (Squawker) The specially designed and treated midrange cone with multi holes that damp the harmful and delicate resonance smoothly bridge the heavy bass and the super sonic high range, eliminating the undesirable distortion inherent to conventional compound type speakers.
- 3) Super Sonic (Tweeter). The 12TX-50's super high is a real thrill. The secret of 12TX-50's super high lies in the specially developed Edge-wise wound, 20 Micron super duralmine diaphragm.
- 4) Built-in Net-work. The bass range and the midrange are mechanically and smoothly crossed-over and the midrange and the high are electrically bridged by the built-in dividing net-work, ensuring dip-free and peak-free, straight characteristics.
- 5) Attenuator. The super high pitch from the speaker must be controlled according to the condition of listening room and the program sources to please the ears of listeners. The constant impedance type attenuator is provided for the purpose.

12TX-50

SPECIFICATIONS ON CORAL 12TX-50

Nominal Diameter	: 12-inch (30cm)	Flux Density	: Woofer-9,800 Gauss Tweeter 13,000 Gauss
Resonance	: 15-28c/s	Total Flux	: Woofer-160,000 Maxwell
Frequency Range	: 18-22,000c/s	Outside Diameter	: 13.3/4" (347mm)
Cross-over Frequencies	: 400c/s/mechanical -midrange 2,500c/s/electrical -tweeter	Mounting Pitch	: 13" (330mm) for prominent mounting 11 1/2" (292mm) for conventional mounting
Music Power Handlig	: 25Watt	Baffle Opening	: 12 1/4" (310mm) for prominent mounting 10 1/2" (267mm) for conventional mounting
Sensitivity	: 102dB	Depth	: 6.3/4" (170mm)
Voice Coil Impedance	: 16ohm	Net Weight	: 9.16lbs. (3.8kgm)
Effective Vibration Mass	: 35grm.	Shipping Weight	: 12.1 lbs. (5.5kgm)
Q ^o 20c/s	: 0.454	Shipping Measurement	: 0.93cft



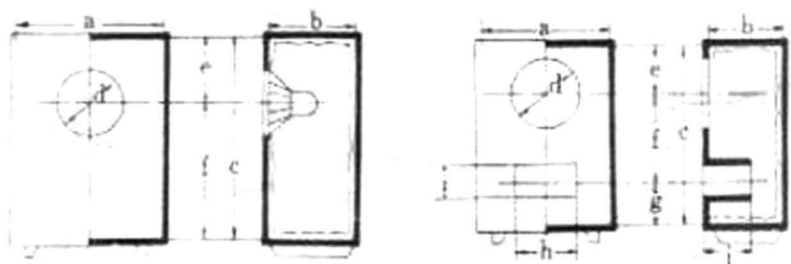
INSTRUCTION

Care must be taken so that the input terminals of 12TX-50 are connected with the 16 ohm. output terminals of your amplifier; no other line should be wired. An erroneous hooking of house line, for instance, immediately result in destroying the voice coil of the speaker. When using more than two 12TX-50, particularly in case of use for STEREO, the voice coil impedance and the phase (plus and minus) matching must be done properly. The red terminal of 12TX-50 is the plus terminal.

Mounting. With the view to obtaining the best result from 12TX-50, the Prominent Mounting as illustrated below is highly recommended, although the conventional type mounting would not hurt the performance too much. The port hole diameter of baffle board for Prominent mounting is 13", for conventional mounting, 10 1/2".

ENCLOSURE.

No matter how good a speaker Model 12TX-50 is, housing it in or mounting on a properly made enclosure or heavy baffle board is the absolutely indispensable condition. In order to let 12TX-50 demonstrate all what it is capable of, put it in the sturdily constructed enclosure according to or close to the following dimensions (Infinite baffle board is impracticable for home use). The enclosure must be made of heavy and thick material; hard veneer or solid wood of at least 1 inch (25mm), and the inside walls of the enclosure must be lined with soft, sound absorbing materials like felt or glass wool.



	a	b	c	d	e	f	g	h	i	j	in (cm)
closed	66	50	100	31	30	70					330/ 40
	54	40	80	31	25	55					170/ 50
Bassreflex	62	55	100	31	30	50	20	28	14	38	340/ 30

ATTENUATOR

The attenuator of 12TX-50 should be tightly put on the back or the side of the enclosure; both the inner and the outer Nuts must be as tightly fastened as possible; lose nuts lead a killing resonance. Applying small amount of paint or glue on the nuts after fastening helps nuts stay in position.