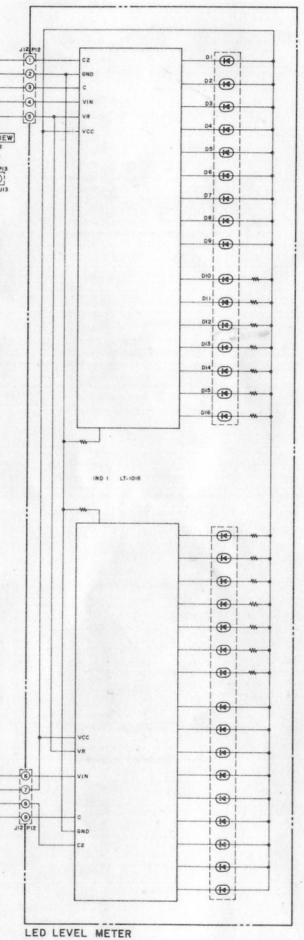
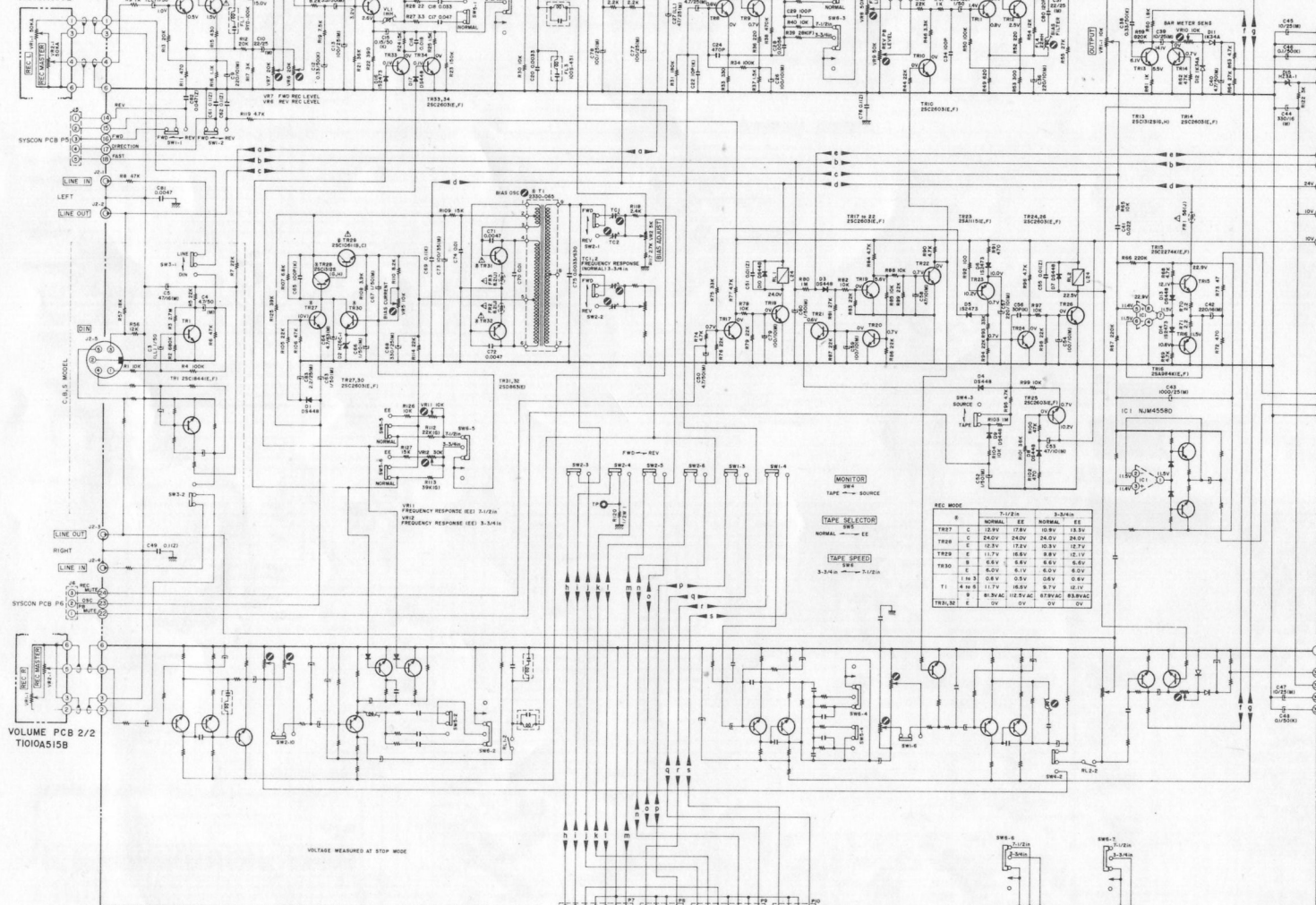


GX-77

A B C D E F G H I J K

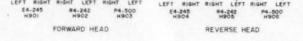
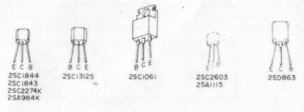
1
2
3
4
5
6
7
8

VOLUME PCB 1/2
T1010A515B



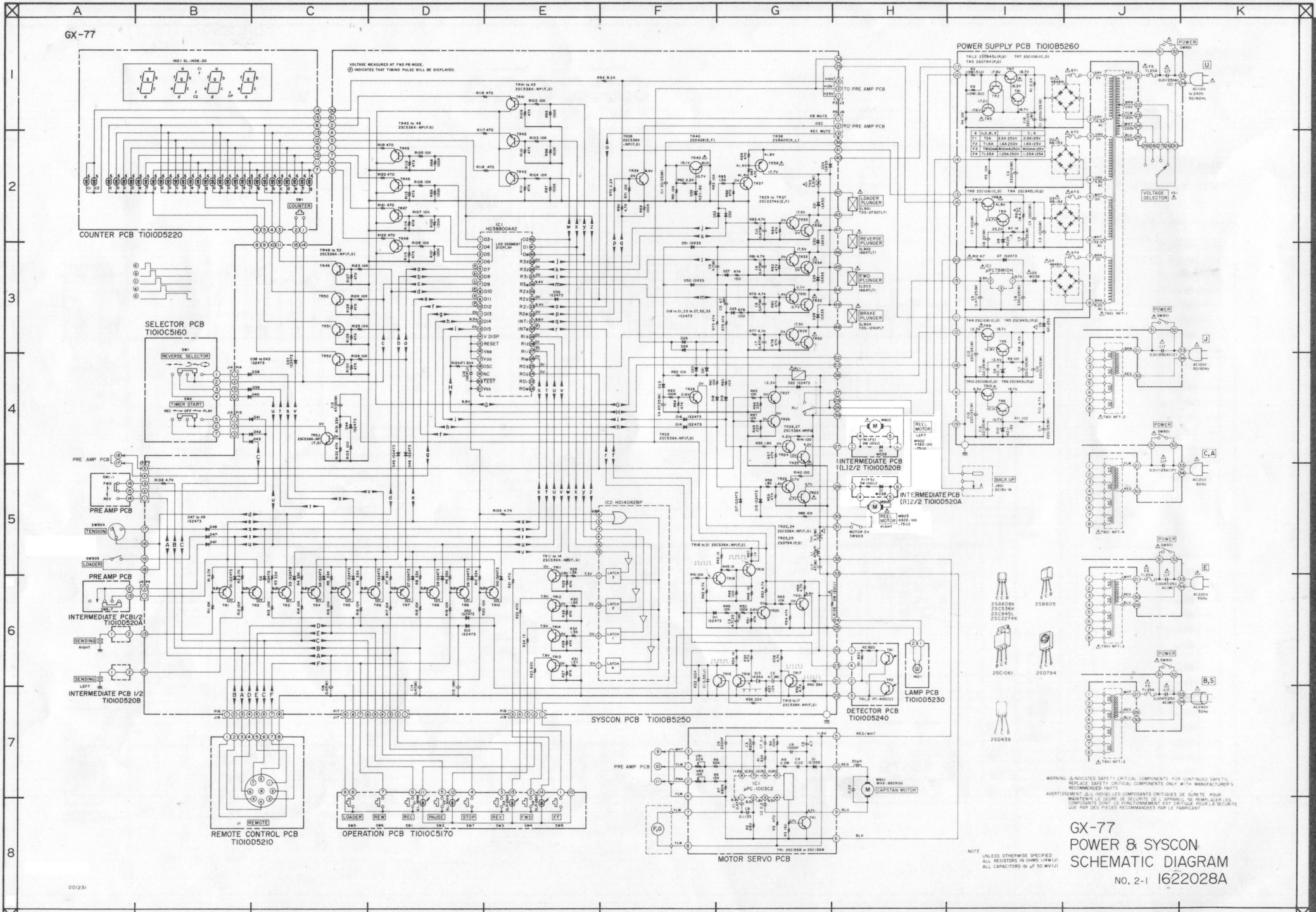
WARNING: INDICATES SAFETY CRITICAL COMPONENTS. FOR CONTINUED SAFETY, REPLACE SAFETY CRITICAL COMPONENTS ONLY WITH MANUFACTURER'S RECOMMENDED PARTS.
 AVERTISSEMENT: INDICATE LES COMPOSANTS CRITIQUES DE SÛRETÉ. POUR MAINTENIR LE DEGRÉ DE SÛRETÉ DE L'APPAREIL, NE REMPLACEZ LES COMPOSANTS QU'AVEC LE FONCTIONNEMENT EST CRITIQUE POUR LA SÛRETÉ QUE PAR DES PIÈCES RECOMMANDÉES PAR LE FABRICANT.

NOTE: UNLESS OTHERWISE SPECIFIED, ALL RESISTORS IN OHMS (R/W/L); ALL CAPACITORS IN µF (50 WV/L); (F/S) FULF SAFE RESISTORS.



GX-77 AMP
 SCHEMATIC DIAGRAM
 No. 2-2 1622033A

GX-77



GX-77
 POWER & SYSCON
 SCHEMATIC DIAGRAM
 NO. 2-1 1622028A

NOTE
 UNLESS OTHERWISE SPECIFIED
 ALL RESISTORS IN OHMS UNLESS
 ALL CAPACITORS IN UF 50 WV/VI