

AKAI

INTRODUCING THE EXCLUSIVE AKAI SUPER GX HEAD

In 1969 AKAI introduced one of the most important technological advances in tape recording history — the exclusive Glass and Crystal Ferrite GX Head. The head is guaranteed* for over 150,000 hours — the equivalent of over 17 years of continuous use.

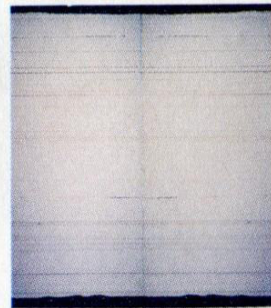
Now AKAI makes a great thing even better with the introduction of two new Super GX Heads. These revolutionary heads are designed to improve frequency response by 2,000 Hz, improve S/N ratio 4 to 6 dB, improve the dynamic range of all types of tapes and deliver optimum performance with metal tape.

The new **Super GX Combo Head**, combined with a high current erase head to accommodate metal tape, gives you all the elements of a true 3-head deck with tape/source monitoring.

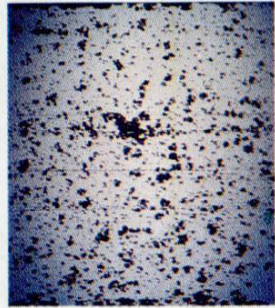
The **Super GX Twin Field Head** incorporates two gaps mounted in a single head — an optimum wide gap for recording and an optimum narrow gap for playback. AKAI has eliminated the necessity of the compromise gap usually found in a conventional record/playback head. With the exception of tape monitoring, the Super GX Twin Field Head gives you the performance found only in 3-head function decks.

Both new Super GX Heads offer a 150,000 hour guarantee, and the dramatically new state-of-the-art specifications you've come to expect from AKAI.

Gap environs of
Single Crystal
Ferrite Head



Gap environs of
Poly-Ferrite Head



*After equal use/Enlarged to 800 times actual size.

*limited warranty

Super GX/GX Head Warranty*

150,000 hours the equivalent of almost 17½ years of continuous play.

AKAI CASSETTE DECKS

When it comes to a convenient way to add tape to your system, the cassette format is unmatched because it is compact and relatively simple to operate. Cassette decks offer quality reproduction and the flexibility of creating your own programming. There is no tape threading or handling of reels, and the space requirement for tape storage is minimal.

AKAI manufactures the broadest line of front-loading cassette decks on the market, and while models vary in features and price, they all have the AKAI tradition of hand-crafted workmanship and quality.

Wow and Flutter—Fluctuations in speed of turntable or tape transport that cause pitch distortions; wow refers to slow, repeated fluctuations; flutter to short, rapid fluctuations.

Signal-To-Noise Ratio (S/N Ratio)—The relative amount of signal to undesired and extraneous noises in the output of a tape deck.

Frequency Response—The range from the lowest to the highest pitch frequencies that the tape deck is able to produce.

Distortion—Unwanted noise or sound that did not exist in the original recording.

Harmonic Distortion—distortion between naturally related tones. **Intermodulation Distortion**—new tones caused by the mixing of two or more original tones.

IPLS—(Instant Program Location System) searches a pre-recorded tape at high speed (both in fast forward and reverse), locates the beginning of a program, then plays that program at normal speed.

IPSS™—(Instant Program Search System) allows you to search out and play any one of 9 selections on a cassette tape.

NOTE: See page 13 for additional terms.

GX-F90 Amplifier Style Front Load Stereo Cassette Deck With IPLS

Dual Process Dolby,* Super GX Combo Head and High Current Erase Head to Accommodate Metal Tape, Tape/Source Monitoring, 2-Color Fluorescent VU/Peak Bar Meters, 2 Motors, Direct Drive DC Servo Motor plus DC Motor for Tape Handling, Mic/Line Mixing, Multiplex Filter, Lighted 4-Position Tape Selector, Memory Rewind and Auto-Repeat, Remote Control with Optional RC-18/RC-70, Illuminated Feather Touch Full Logic Solenoid Function Controls, Instant Program Location System (IPLS).

Wow/Flutter—Less than 0.03% WRMS; **S/N Ratio**—Better than 62 dB (without Dolby*) weighted, at Metal position with peak level, Dolby* on improves up to 10 dB above 5 kHz; **Frequency Response**—25-21,000 Hz (± 3 dB using Metal Tape); **Distortion**—Less than 0.6% (1,000 Hz, "0" VU) at Metal Position; **Dimensions**—17.3" (W) x 4.1" (H) x 14.6" (D); **Weight**—22 lbs.



GX-F80 Amplifier Style Front Load Stereo Cassette Deck

Dual Process Dolby,* Super GX Combo Head for Tape/Source Monitoring plus High Current Erase Head to Accommodate Metal Tape, Left and Right 2-Color Fluorescent Bar Meters, 2 Motors – 1 Electronic Speed Controlled DC Motor for Capstan Drive and 1 DC Motor for Tape Handling, Memory Rewind, Mic/Line Mixing, Multiplex Filter, Tape Selector for LN/LH/CrO₂/Metal, Remote Controllable with Optional RC-18/RC-70, Illuminated Feather Touch Full Logic Solenoid Function Controls, Output Level Control, Record Mute.

Wow/Flutter—Less than .035% WRMS; **S/N Ratio**—Better than 62 dB (without Dolby*) weighted, at Metal position with peak level, Dolby* on improves up to 10 dB above 5 kHz; **Frequency Response**—25-21,000 Hz (± 3 dB using Metal Tape); **Distortion**—Less than 0.6% (1,000 Hz, "0" VU) at Metal Position; **Dimensions**—17.3" (W) x 5.3" (H) x 13.4" (D); **Weight**—20 lbs.



GX-M50 Amplifier Style

Front Load Cassette Deck With IPLS

Super GX Combo Head For Record/Playback and Tape/Source Monitoring plus High Current Erase Head for Metal Tape, Instant Program Location System (IPLS), 4-Position Tape Selector Switch, Fine Bias Adjustment, Dual Color Peak/VU Fluorescent Bar Meters, Timer Recording and Playback Capability, Dual Process Dolby* Noise Reduction, Auto Stop, Mic/Line Mixing, Memory Rewind, Output Level Control, Auto Play, Master Record Volume Control for Fade In and Fade Out.

Wow/Flutter—Less than 0.04% WRMS; **S/N Ratio**—Better than 62 dB (without Dolby*) weighted, at Metal position with peak recording level, Dolby* on improves up to 10 dB above 5 kHz; **Frequency Response**—25-21,000 Hz (± 3 dB using Metal Tape); **Distortion**—Less than 0.6% (1,000 Hz, "0" VU); **Dimensions**—17.3" (W) x 6.2" (H) x 10.9" (D); **Weight**—16 lbs.

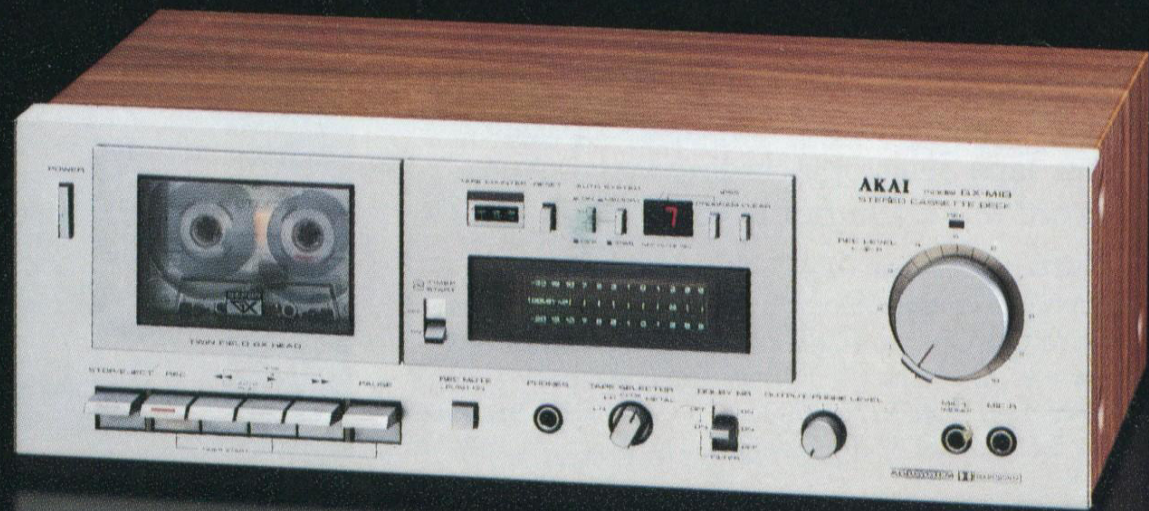


GX-M10

Front Load Cassette Deck With IPSS™

Twin Field Super GX Head plus High Current Erase Head to Accommodate Metal Tape, Instant Program Search System (IPSS)-9 Program Selection, Fluorescent Display Bar Meters, Dolby* Noise Reduction, Multiplex Filter, Timer Record/Playback Capability, 4-Position Tape Selector including Metal, Record Mute, Auto Stop, Memory Rewind, Output Level Control.

Wow/Flutter—Less than 0.04% WRMS; **S/N Ratio**— Better than 61 dB (without Dolby*) using metal tape (Dolby* on improves up to 71 dB above 5 kHz); **Frequency Response**— 30-19,000 Hz (± 3 dB using metal tape); **Distortion**—Less than 0.6% (1,000 Hz "0" VU); **Dimensions**—17.3" (W) x 5.6" (H) x 9.8" (D); **Weight**—13 lbs.



CS-M02

Front Load Stereo Cassette Deck

Dolby* Noise Reduction System, Multiplex Filter, Sendust Record/Playback Head with High Current Erase Head for Metal Tape, Fluorescent Display Bar Meters, Timer Record/Playback Capability, 3-Position Tape Selector including Metal, Auto Play, Record Mute, Output Level Control.

Wow/Flutter—Less than 0.045% WRMS; **S/N Ratio**—Better than 60 dB (without Dolby*) weighted at metal position (Dolby* on improves up to 70 dB above 5 kHz); **Frequency Response**—30-18,000 Hz (± 3 dB using metal tape); **Distortion**—Less than 0.7% (1,000 Hz "0" VU); **Dimensions**—17.3" (W) x 5.6" (H) x 9.8" (D); **Weight**—12 lbs.



CS-M01

Front Load Stereo Cassette Deck

Dolby* Noise Reduction System, Multiplex Filter, Tape Selector Switch, Auto Stop, Timer Record/Playback Capability, Large Vertical VU Meters, Walnut Grain Vinyl Finish.

Wow/Flutter—Less than 0.05% WRMS; **S/N Ratio**—Better than 57 dB using FeCr tape with peak level at 3% THD, (Dolby* on improves up to 67 dB above 5 kHz); **Frequency Response**—30-17,000 Hz (± 3 dB using FeCr tape); **Distortion**—Less than 0.7% using FeCr tape (1,000 Hz "0" VU); **Dimensions**—17.3" (W) x 5.6" (H) x 9.8" (D); **Weight**—11 lbs.



GXC-735D

Deluxe Amplifier Style Bi-Directional Record/Playback Stereo Cassette Deck

GX Head, Auto/Manual Reverse Record/Playback, Two Capstans Used Alternately For Superior Tape Control in Both Directions, Quick Reverse Continuous Play, Timer Start for Record and Playback, Memory Rewind, Illuminated Feather Touch Full Logic Solenoid Controls, Four Position Tape Selector, Dolby* Noise Reduction System, ADR® System, Two Step Peak Level Indicator (+ 3 dB and + 7 dB).

Wow/Flutter – Less than 0.045% WRMS; **S/N Ratio** – Better than 56 dB at CrO₂ position with peak level at 3% THD, Dolby* on improves up to 10 dB above 5 kHz; **Frequency Response** – 35-17,000 Hz (\pm 3 dB using FeCr Tape); **Distortion** – Less than 1.0% using LN Tape (1,000 Hz, "0" VU); **Dimensions** – 17.3" (W) x 5.9" (H) x 11.4" (D);

Weight – 21.4 lbs.



CS-732D

Amplifier Style Bi-Directional Record/ Playback Stereo Cassette Deck

Auto/Manual Reverse Record/Playback, Two Capstans Used Alternately for Superior Tape Control in Both Directions, Quick Reverse Continuous Play, Four Position Tape Selector, Dolby* Noise Reduction System, Peak Level Indicator, Output Level Control, Direction Indicator.

Wow/Flutter – Less than 0.06% WRMS; **S/N Ratio** – Better than 56 dB, weighted, at CrO₂ position, with peak level at 3% THD, Dolby* on improves up to 10 dB above 5 kHz; **Frequency Response** – 35-16,000 Hz (± 3 dB using FeCr Tape); **Distortion** – Less than 1.3% (1,000 Hz, "0" UV); **Dimensions** – 17.3" (W) x 6.3" (H) x 11.4" (D); **Weight** – 17.7 lbs.



CR-83D

8 Track Stereo Record/Playback Deck

Illuminated Elapsed Time Indicator for Recording Timing, Locking Pause, Fast Forward, Independent Dual Record Level Controls, Dust-Free Combination Record/Play and Erase Head, Auto-Stop and Continuous Playback Selector Switch, DC Motor, Illuminated Record Interlock, Automatic AC on when cartridge is inserted.

Wow/Flutter – Less than 0.15% WRMS; **S/N Ratio** – Better than 53 dB, weighted, with peak level at 3% THD;

Frequency Response – 60-14,000 Hz (± 3 dB) using low noise tape; **Distortion** – Less than 2% (1,000 Hz, "0" VU);

Dimensions – 16.5" (W) x 4.3" (H) x 9.6" (D); **Weight** – 12 lbs.



AKAI REEL-TO-REEL TAPE DECKS

Reel-to-Reel (or "open reel") tape is still the format preferred by professional and serious amateur recordists because, at faster speeds, it is capable of greater frequency response. This format offers you maximum flexibility and versatility relative to editing, mixing, special effects for your own programming and productions.

AKAI manufactures a full range of two channel reel-to-reel tape decks designed for true-to-life sound at all price ranges, with the designs and features you need to get the maximum performance out of your equipment. Models range from the GX-4000D,

the lowest priced 3-head, reel-to-reel deck on the market, to the studio quality PRO-1000.

Hertz—The number of vibrations or cycles per second in the electrical signal (Hz).

Limiters—Device that suppresses short duration of peaks in audio signal. Prevents over-recording at high volume level.

Dolby*—Device that boosts level of high frequencies during quiet passages of recording and lowers them to their original levels during playback mode; reduces unwanted tape hiss by up to 10 dB above 5 kHz.

Mic/Line Mixing—The ability to mix an existing recording (line input) with live material (mic. input).

Pause Control—Allows you to stop the tape without switching the machine out of record or play mode.

Tension Arm—Device that tightens tape between capstan and take-up reel to minimize tape slippage.

Capstan—Rotating shaft, driven by a motor that helps move tape at a constant speed.

*Dolby is a trademark of Dolby Labs, Inc.

NOTE: See page 3 for additional terms.

PRO-1000

AC Servo Direct Drive Capstan Motor plus 2 Reel Motors, 4 Heads (3 GX), 10½" Reel Capacity, Large Illuminated 40 dB Meters, Read Peak, VU and Bias, Panpots, 4 In/2 Out Mixer, Variable EQ and Bias Controls, Special Inputs for Outboard Noise Reduction Units, i.e., Dolby,* DBX, Cue Position for Editing, Double Capstan Closed Loop Drive System, Tape/Source Monitoring, Remote Control and Timer Operation (optional RC-17, RC-18 or RC-70), Feather Touch Full Logic Solenoid Control System, Fade-In and Fade-Out Controls.

Tape Speed – 15, 7½, 3¾ ips; **Wow/Flutter** – 15 ips: 0.025% WRMS, 7½ ips: 0.04% WRMS; **S/N Ratio** – Better than 60 dB, weighted, at Wide Range Tape position, with peak level at 3% THD; **Frequency Response** – 15 ips @ "0" VU: 50-20 kHz ± 1 dB, 7½ ips @ "0" VU: 40-24 kHz ± 3 dB; **Overall Distortion** – Not more than 1% @ 1 kHz @ "0" VU for all speeds; **Dimensions** – Tape Drive Section – 18" (W) x 8" (D) x 16¼" (H), Amplifier Section – 18" (W) x 9" (D) x 9" (H); **Weight** – Tape Drive Section – 62.5 lbs., Amplifier Section – 22.5 lbs.

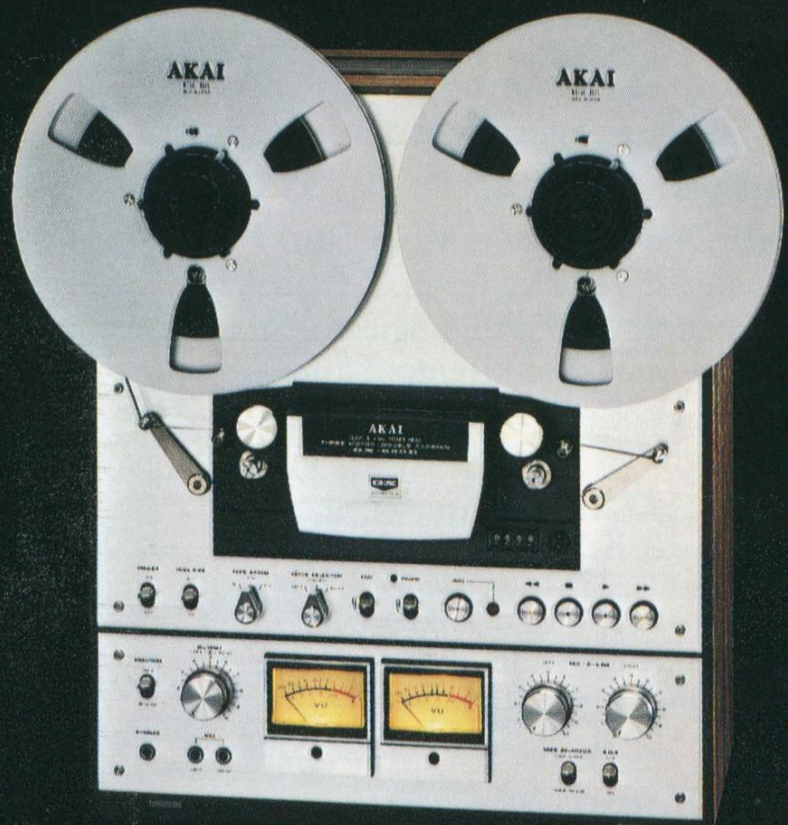


GX-650D

4 Track 2 Channel Stereo/Mono 10½" Deck

AC Servo Direct Drive Capstan Motor and 2 Reel Motors, Closed Loop Double Capstan Drive, 3 GX Heads, Full Logic Solenoid Function Controls, Dual Monitoring, Mic/Line Mixing, Sound on Sound.

Tape Speed – 15, 7½, 3¾ ips; **Wow/Flutter** – 0.04% RMS (15 ips); **S/N Ratio** – Better than 60 dB, weighted, at Wide Range Tape position, with peak level at 3% THD, **Frequency Response** – 30-30,000 Hz ± 3 dB (15 ips); **Distortion** – 0.4% at 15 ips (1,000 Hz, "0" VU); **Dimensions** – 20.6" (H) x 17.4" (W) x 10" (D); **Weight** – 60 lbs.



GX-635D

4 Track 2 Channel Automatic Reverse Record/Playback Stereo/Mono 10½" Deck

AC Servo Direct Drive Capstan Motor and 2 Reel Motors, 6 Heads (4 GX Heads, 2 Erase Heads), Pitch Control $\pm 6\%$, Full Logic Solenoid Function Controls, Mic/Line Mixing, Timer—Record and Playback, Real Time Counter, Record Mute Switch.

Tape Speed—7½, 3¾ ips; **Wow/Flutter**—Less than 0.03% WRMS at 7½ ips; **S/N Ratio**—Better than 62 dB, weighted, at Wide Range Tape Position with Peak Level at 3% THD; **Frequency Response**—30-27,000 Hz ± 3 dB using Wide Range Tape); **Distortion**—0.5% at 7½ ips (1,000 Hz, "0" VU); **Dimensions**—17.4" (W) x 19" (H) x 10.1" (D); **Weight**—46.4 lbs.



GX-620

4 Track 2 Channel Stereo/Mono 10½" Deck

AC Servo Direct Drive Capstan Motor and 2 Eddy-Current Reel Motors, 3 Heads (2 GX Heads and 1 Erase Head), Illuminated Full Logic Solenoid Function Controls with "Standby" Indicator Lights, Dual Monitoring, Mic/Line Mixing, Timer Recording and Playback Capability, Stereo or Mono Recording, Variable Pitch Control, Auto Stop, Output Level Control.

Tape Speed—7½, 3¾ ips; **Wow/Flutter**—Less than 0.03% RMS (7½ips); **S/N Ratio**—Better than 62 dB weighted, with low noise tape and peak recording level at 3% THD; **Frequency Response**—30-26,000 Hz ± 3 bD (7½ips); **Distortion**—0.5% at 7½ ips (1,000 Hz, "0" VU); **Dimensions**—17.4" (W) x 17.6" (H) x 9.5" (D); **Weight**—39 lbs.



GX-267D

4 Track 2 Channel 6 Head Auto Reverse Stereo/Mono 7" Deck

Automatic/Manual Reverse Record/Playback, AC Servo Direct Drive Capstan Motor and 2 Reel Motors, Dual Monitoring, Feather Touch Solenoid-Operated Direct Function Control, Mic/Line Mixing and Record Mute Switch.

Tape Speed – 7½, 3¾ ips; **Wow/Flutter** – Less than 0.06% RMS (7½ ips); **S/N Ratio** – Better than 60 dB, weighted, at Wide Range Tape position, with peak level at 3% THD; **Frequency Response** – 30-25,000 Hz (± 3 dB) at 7½ ips; **Distortion** – Less than 0.5% (1,000 Hz, "0" VU); **Dimensions** – 17.3" (W) x 18.5" (H) x 9.8" (D); **Weight** – 45.5 lbs.



GX-255

4 Track 2 Channel Stereo/Mono 7" Deck

Automatic/Manual Reverse Playback, AC Servo Direct Drive Capstan Motor and 2 Eddy-Current Reel Motors, 3 GX Heads (4-Head Function), Dual Monitoring, Illuminated Full Logic Solenoid Function Controls with "Standby" Indicator Lights, Mic/Line Mixing, Output Level Control.

Tape Speed—7½, 3¾ ips; **Wow/Flutter**—Less than 0.04% RMS (7½ ips); **S/N Ratio**—Better than 61 dB weighted, with low noise tape and peak level at 3% THD; **Frequency Response**—30-24,000 Hz ± 3 dB (7½ ips); **Distortion**—Less than 0.5% at 7½ ips (1,000 Hz, "0" VU); **Dimensions**—17.3" (W) x 16.5" (H) x 9.5" (D); **Weight**—35 lbs.



GX-4000D

4 Track 2 Channel Stereo/Mono 7" Deck

3 Heads (1 GX Record Head, 1 GX Playback Head and 1 Erase Head), Tape/Source Monitoring, Mic/Line Mixing, Sound-On-Sound, Sound-With-Sound, Track Selector Switch, Auto-Stop, Output Control.

Tape Speed—7½, 3¾ips; **Wow/Flutter**—Less than 0.08% RMS (7½ips); **S/N Ratio**—Better than 60 dB, weighted at Wide Range Tape position, with peak level at 3% THD; **Frequency Response**—30-24,000 Hz ± 3 dB (7½ips); **Distortion**—Less than 1% (1,000 Hz, "0" VU); **Dimensions**—17.3" (W) x 12.4" (H) x 9.1" (D); **Weight**—29 lbs.

GX-4000DB available with Dolby*



1722 II 4 Track 2 Channel 7" Portable Stereo Deck with Built-In Amplifiers and Speakers

Two 5" Speakers, Public Address Provisions,
Independent Tone/Volume Controls, Direct
Input for Magnetic Phono Cartridge, Tape Select
Switch, Stereo/Mono Switch, Auto-Stop.

Tape Speed – 7½, 3¾ ips; **Wow/Flutter** – 0.14% RMS (7½
ips); **S/N Ratio** – Better than 56 dB, weighted, at Wide Range
Tape position, with peak level at 3% THD; **Frequency
Response** – 30-21,000 Hz ± 3 dB (7½ ips); **Distortion** – 2%
at 7½ ips (1,000 Hz, "0" VU); **Dimensions** – 14" (W) x 14.1"
(H) x 9.8" (D); **Weight** – 29 lbs.



AKAI TURNTABLES

For many audiophiles, the turntable is the primary component in a system because they prefer records to FM radio or tape.

When selecting an AKAI turntable, it's important to keep in mind that it is actually a system, consisting of the turntable itself and the tone arm. AKAI turntables are designed to produce a constant, accurate movement, calling on AKAI's 30 years of expertise in motors. And, because they are set in a solid base, rumble levels are reduced. AKAI tone arms are designed to support the cartridge at the proper angle to the disc, guide it accurately across the record, apply the proper tracking and anti-skating forces, be physically inert and not apply excessive drag to the motion. And naturally, while

a good turntable sounds better, it protects your record investment, as well.

AKAI offers 6 turntables in a variety of configurations: fully-automatic, semi-automatic, direct drive, belt-driven and quartz lock.

Wow and Flutter — Fluctuations in speed of turntable that cause pitch distortion; wow refers to slow repeated fluctuations; flutter to short rapid fluctuations.

Anti-Skating — Arrangement, usually mechanical, intended to defeat tendency of the tone arm to drift toward the center of the record.

Rumble — Low frequency noise from turntable.

Tracking — Ability of a cartridge stylus to follow the configurations in a record groove.

Cartridge — Record player cartridge or pickup is the voltage-generating device with stylus assembly.

Stylus — Assembly in record player cartridge that engages record groove.

Oil Damped Cueing — A method of precisely placing stylus on the record in order to avoid damage to the record or stylus.

AP-307

Quartz Lock Direct Drive, Full-Automatic Turntable

Static Balanced Tone Arm, Oil Damped Cueing,
Stylus Overhang Adjustment, Anti-Skating
Control, Auto Repeat, Electronic Speed Change,
Variable Pitch Control, Built-in Strobe Light,
Vibration-Absorbing Insulated Legs and Hinged,
Removable Smoked Dust Cover.

Motor — DC Servo; **Speeds** — $33\frac{1}{3}$, 45 (r.p.m.); **Wow/Flutter** —
0.035% (Din); **Rumble** — 70 dB (Din-B); **Dimensions** — $6\frac{7}{32}$ " (H)
x $17\frac{5}{11}$ " (W) x $13\frac{3}{4}$ " (D); **Weight** — 18.9 lbs.



AP-Q50

Quartz Lock Direct Drive, Semi-Automatic Turntable With Front-Panel Controls

Static Balanced Tone Arm, Oil Damped Cueing, Stylus Overhang Adjustment, Anti-Skating Control, Electronic Speed Change, Variable Pitch Control, Built-in Strobe Light, Auto Return, Vibration Absorbing Insulated Feet, Hinged Dust Cover.

Motor—DC Servo; Speeds— $33\frac{1}{3}$, 45 (r.p.m.); **Wow/Flutter**—0.05% (DIN); **Rumble**—70 dB (DIN B); **Dimensions**—17.3" (W) x 5.5" (H) x 15.9" (D); **Weight**—13 lbs.



AP-207

Direct Drive, Full-Automatic Turntable

Static Balanced Tone Arm, Oil Damped Cueing, Anti-Skating Control, Electronic Speed Change, Independent Variable Pitch Controls, Auto Repeat, Built-in Strobe Light, Stylus Overhang Adjustment, Vibration-Absorbing Insulated Legs and Hinged, Removable Smoked Dust Cover.

Motor — DC Servo; **Speeds** — $33\frac{1}{3}$, 45 (r.p.m.); **Wow/Flutter** — 0.035% (Din); **Rumble** — 70 dB (Din-B); **Dimensions** — $6\frac{7}{32}$ " (H) x $17\frac{5}{16}$ " (W) x $13\frac{3}{4}$ " (D); **Weight** — 17.8 lbs.



AP-D30 Direct Drive, Semi-Automatic Turntable With Front-Panel Controls

Static Balanced Tone Arm, Oil Damped Cueing,
Anti-Skating Control, Electronic Speed Change,
Variable Pitch Control, Auto Return, Strobe Light,
Stylus Overhang Adjustment, Vibration Absorbing
Insulated Feet, Removable Hinged Smoked
Dust Cover.

Motor—DC Servo; Speeds— $33\frac{1}{3}$, 45 (r. p. m.); **Wow/Flutter**—
0.05% (DIN); **Rumble**—70 dB (DIN B); **Dimensions**—17.3"
(W) x 5.5" (H) x 15.9" (D); **Weight**—12 lbs.



AP-B20

Belt Drive, Semi-Automatic Turntable

Stylus Overhang Adjustment, Oil Damped Cueing Control, "S" Shaped Low Resonance Tone Arm, Auto Return, Anti-Skating Control, Vibration Absorbing Insulated Feet, Removable Hinged Smoked Dust Cover.

Motor—4 Pole Synchronous Motor; **Speeds**— $33\frac{1}{3}$, 45 (r.p.m.); **Wow/Flutter**—0.05% (DIN); **Rumble**—65 dB (DIN B); **Dimensions**—17.3" (W) x 5.3" (H) x 14" (D); **Weight**—13 lbs.



AP-B10C

Belt Drive Turntable with Cartridge

Stylus Overhang Adjustment, Low Mass "Straight" Tone Arm, Damped Cueing Control, Anti-Skating Control, Vibration Absorbing Insulated Feet, Hinged Removable Smoked Dust Cover, Magnetic Cartridge.

Motor—4 Pole Synchronous Motor; **Speeds**—33 $\frac{1}{3}$, 45 (r.p.m.); **Wow/Flutter**—0.5%; **Rumble**—65 dB (Din-B); **Dimensions**—5.3" (W) x 17.3" (H) x 14" (D); **Weight**—13 lbs.



AKAI RECEIVERS, INTEGRATED AMPLIFIERS AND TUNERS

Probably the most popular stereo component today is the all-in-one receiver, with a tuner, power amplifier and pre-amplifier in one unit. Still, for the more serious audiophile, separate components (integrated amplifier and tuner) are the only way to go.

AKAI offers a complete range of both receivers and separate components, with a wide variety of features and prices. The AKAI receiver series consists of four models, with popular power ranges from 26 to 62 watts per channel. All are designed for

better tuner sensitivity and less distortion at all levels.

If you prefer separates, you'll find that AKAI's integrated amplifiers and tuners provide a combination of systems perfectly matched for clean, clear power and sound improvements you can hear.

Tuner—High fidelity component containing radio receiving circuits.

Amplifier—Electronic device for magnifying (and usually controlling) electrical signals.

Watts Per Channel—Measure of electrical power delivered per channel, RMS (Root Mean Square).

Ohms—Unit used for measuring resistance.

Power Bandwidth—Two frequency extremes at which an amplifier will produce

its rated continuous power per channel at rated distortion.

Capture Ratio—Ability of tuner to reject FM stations and interference on the same frequency as a desired one.

Distortion—Unwanted noise that did not exist on the original sound. **Harmonic Distortion**—distortion between naturally related tones. **Intermodulation Distortion**—new tones caused by the mixing of two or more original tones.

Sensitivity—Tuner's ability to receive weak or distant signals.

Selectivity—Tuner's ability to distinguish between two different stations placed closely on the dial.

AA-R50 AM/FM Stereo Receiver

62 Watts/Channel, Min. RMS at 8 ohms from 20 to 20,000 Hz with no more than 0.04% Total Harmonic Distortion, Loudness Control, FM Mute, FM Dolby* De-emphasis, Bass, Mid-Range & Treble Controls, Dual LED Power Indicators, DC Amplification, 2 Tape Inputs, Tape Dubbing Facilities and Tape Monitors. 2 AC Convenience Outlets, Multiple Speaker Switching, High & Low Filters, Illuminated Signal Strength & Tuning Meters, Walnut Grain Vinyl Cover.

FM Sensitivity (IHF)—1.7 μ V; **FM Selectivity (IHF)**—More than 70 dB; **Dimensions**—18.9" (W) x 5.9" (H) x 14.2" (D); **Weight**—25 lbs.



AA-R40 AM/FM Stereo Receiver

50 Watts/Channel, Min. RMS at 8 ohms from 20 to 20,000 Hz with no more than 0.04% Total Harmonic Distortion, Loudness Control, FM Mute, DC Amplification, FM Dolby* De-emphasis, Dual LED Power Indicators, 2 Tape Inputs, High and Low Filters, Tape Dubbing Facilities and Tape Monitors. 2 AC Convenience Outlets, Multiple Speaker Switching, Illuminated Signal Strength & Tuning Meters, Walnut Grain Vinyl Cover.

FM Sensitivity (IHF)—1.8 μ V; **FM Selectivity (IHF)**—More than 70 dB; **Dimensions**—18.9" (W) x 5.9" (H) x 14.2" (D); **Weight**—24 lbs.



AA-R30 AM/FM Stereo Receiver

38 Watts/Channel, Min. RMS at 8 ohms from 20 to 20,000 Hz with no more than 0.05% Total Harmonic Distortion, Illuminated Signal Strength and Tuning Meters, Loudness Control, FM Mute, FM Dolby* De-emphasis, Stereo Beacon, LED Power Indicators, 2 Tape Inputs with Dubbing Facilities, Tape Monitor, Stereo/Mono Switch, 2 AC Convenience Outlets, Walnut Grain Vinyl Cover.

FM Sensitivity (IHF)—1.8 μ V; **FM Selectivity (IHF)**—More than 60 dB; **Dimensions**—17.3" (W) x 5.6" (H) x 12.2" (D); **Weight**—20 lbs.



AA-R20 AM/FM Stereo Receiver

26 Watts/Channel, Min. RMS at 8 ohms from 20 to 20,000 Hz with no more than 0.05% Total Harmonic Distortion, Illuminated Signal Strength and Tuning Meters, Loudness Control, FM Mute, Multiple Speaker Switching, Stereo Beacon, Detent Volume Control, FM Dolby* De-emphasis, LED Power Indicator, Tape Monitor, 2 AC Convenience Outlets, Walnut Grain Vinyl Cover.

FM Sensitivity (IHF)—1.9 μ V; **FM Selectivity (IHF)**—More than 60 dB; **Dimensions**—17.3" (W) x 5.6" (H) x 12.2" (D); **Weight**—19 lbs.



AM-U06

Deluxe Stereo Integrated DC Amplifier With Pulsed Power Supply

68 Watts/Channel, Min. RMS at 8 ohms from 20-20,000 Hz with no more than 0.008% Total Harmonic Distortion, Separate Subsonic/High Frequency Filters, Audio Mute, Clipping Indicator Light, 2-Color Fluorescent Power Indicators with x1/x0.1 Selector Switch, Bass, Midrange and Treble Controls with Individual Built-in Defeat Circuitry, Slide Volume Control, 3-Position Magnetic Cartridge Impedance Selector with Moving Coil Cartridge Head Amp Position.

Dimensions—17.3" (W) x 4.1" (H) x 12" (D); **Weight**—18 lbs.



AM-U04

DC Stereo Integrated Amplifier

48 Watts/Channel, Min. RMS at 8 ohms from 20-20,000 Hz with no more than 0.008% Total Harmonic Distortion, Dual Power Supply, Separate Subsonic/High Frequency Filters, Clipping Indicator Light, Fluorescent Power Indicators with x1/x0.1 Selector Switch, 3-Position Loudness Control Switch, Bass, Midrange and Treble Controls with Individual Built-in Defeat Circuitry, Tape Dubbing Facilities, Slide Volume Control, Multiple Speaker Systems A/B/A+B, 3 AC Convenience Outlets, Walnut Grain Vinyl Cover.

Dimensions—17.3" (W) x 4.1" (H) x 12" (D); **Weight**—22 lbs.



AM-U03

DC Stereo Integrated Amplifier

37 Watts/Channel, Min. RMS at 8 ohms from 20-20,000 Hz with no more than 0.008% Total Harmonic Distortion, Separate Subsonic/High Frequency Filters, Bass/Treble Controls with Individual Built-in Defeat Circuitry, 3-Position Loudness Control, Clipping Indicator Light, Fluorescent Power Indicators with x1/x0.1 Selector Switch, Tape Dubbing Facilities, Slide Volume Control, Multiple Speaker Systems A/B/A+B, 3 AC Convenience Outlets (2 Switched, 1 Unswitched), Walnut Grain Vinyl Cover.

Dimensions—17.3" (W) x 4.1" (H) x 11.8" (D); **Weight**—19 lbs.



AT-V04

AM/FM Digital Synthesizer Tuner

Automatic Digital Tuning, Manual Digital Tuning for Picking Up Weak Stations, 7-Station Preset Memory System, Stereo/Mono Mode Switch, Signal Strength Meter, FM Tuning Indicator for Manual Tuning.

Sensitivity—1.6 μ V; **Capture Ratio**—1.2 dB; **Stereo Separation**—More than 54 dB; **Dimensions**—17.3" (W) x 3" (H) x 13.1" (D); **Weight**—12 lbs.



AT-K03 AM/FM Stereo Digital Tuner

Signal Strength Meter, Stereo/Mono Mode Switch, FM Tuning Indicator, FM Stereo Indicator, Large Digital Frequency Display, AM/FM Band Switch, Walnut Grain Vinyl Finish.

Sensitivity—1.9 μ V; **Capture Ratio**—1.2 dB; **Stereo Separation**—More than 52 dB; **Dimensions**—17.3" (W) x 3.1" (H) x 13.4" (D); **Weight**—11 lbs.



AKAI SPEAKERS

Until it gets to the speaker, music is merely a "signal"—an electrical replica of sound. Consequently, the speaker has the critical job of translating that signal into living sound.

AKAI's two and three-way speaker systems are engineered and designed to faithfully reproduce clean, full, true-to-life sound throughout the entire audio spectrum.

Tweeters are equipped with a specially-designed sound radiation lens for excellent high-range directivity. Rolled edge woofers extend the low frequency response and assure a smoother tonal quality in the lower bass ranges.

Perfect speaker size and cabinet volume

make the AKAI series an excellent choice for virtually any room.

Bass Reflex—Type of speaker enclosure in which speaker's rear wave emerges from critically-dimensioned auxiliary opening or port to reinforce bass tones.

Infinite Baffle—Loudspeaker enclosure that absorbs completely or dissipates speaker's rear sound waves.

Driver Unit—Individual speaker within speaker system.

Tweeter—High frequency speaker specializing in treble reproduction.

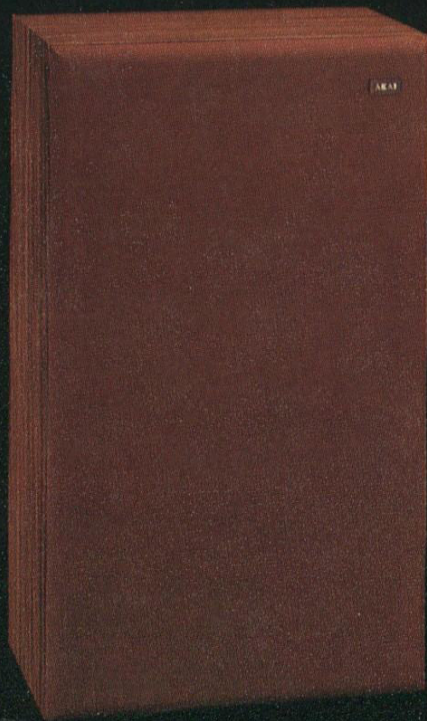
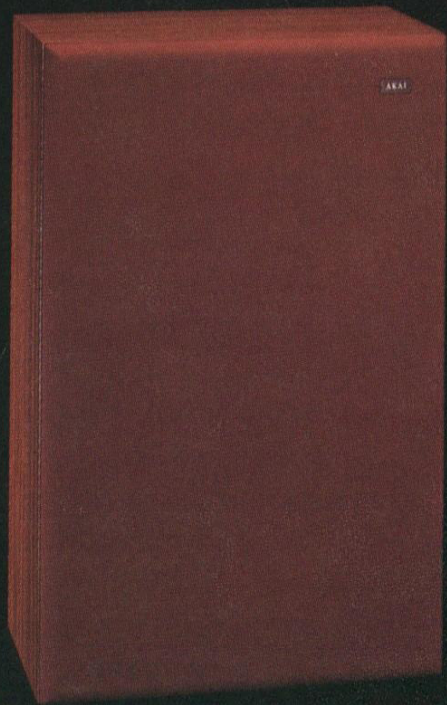
Woofers—Low frequency speaker specializing in bass reproduction.

Crossover—Frequency at which other frequencies above and below it are separated.

Direct Radiating—Speaker system that uses drivers to disperse sound forward from front panel of cabinet.

Efficiency—Ratio, expressed in percentage, of signal output to input; most often used to estimate power needed to drive loudspeaker.

Speaker Enclosure—Acoustically-designed housing or structure for loudspeaker.





SW-137 II

SW-177

System: 3 way, 4 speaker system

Speakers: Woofer 15", Midrange 5 1/4", Two Tweeters 1 3/4" ea.

Rated Impedance: 8 ohms

Maximum Power Input:

100 Watts

Frequency Response:

25 Hz to 20,000 Hz

Crossover Frequencies:

700 Hz and 5 kHz

Level Controls:

(1) High Range, (1) Midrange

Dimensions: **Weight:**

17.2" x 27.3" x 12.2" 46 lbs.

SW-157 II

System: 3 way, 3 speaker system

Speakers: Woofer 12", Midrange 5", Tweeter 1 3/4"

Rated Impedance: 8 ohms

Maximum Power Input: 60 Watts

Frequency Response:

30 Hz to 20,000 Hz

Crossover Frequencies:

1.2 kHz and 5 kHz

Level Controls:

(1) High Range, (1) Midrange

Dimensions: **Weight:**

15.7" x 26.9" x 11.8" 36 lbs.

SW-137 II

System: 3 way, 3 speaker system

Speakers: Woofer 10", Midrange 5", Tweeter 1 3/4"

Rated Impedance: 8 ohms

Maximum Power Input: 40 Watts

Frequency Response:

40 Hz to 20,000 Hz

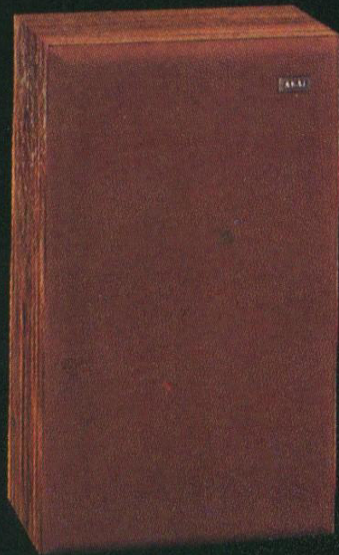
Crossover Frequency:

1.2 kHz and 5 kHz

Level Control: (1) Midrange

Dimensions: **Weight:**

13.5" x 23.3" x 11.8" 26 lbs.



EQ-100

Component Equipment Cabinet

Basic Equipment Cabinet accented with a tempered, smoked glass door; Cabinet and adjustable shelves are finished in rich hickory-grain vinyl laminates. Ample storage area with removable record dividers for versatility. Packed flat. (Easy assembly requires only a standard screwdriver.)

Overall Dimensions — 41⁷/₈" (H) x 15⁷/₈" (D) x 20¹/₂" (W);

Weight — 78 lbs.



EQ-200

Rack-Type Component Equipment Cabinet

Finished in rich hickory-grain vinyl laminates, this professional-looking rack meets 19" EIA rack-mount standards. Moves easily on deluxe dual-wheel hooded casters. Unit comes complete with simple-to-assemble instructions (requires only a standard screwdriver).

Overall Dimensions – 44" (H) x 20" (D), 21 1/8" (W);

Weight – 68 lbs.



EQ-300

Hi-Boy Component Equipment Cabinet

This versatile unit is designed for the audio buff and is laminated in rich hickory-grain vinyl. The turntable area is large enough to handle most turntables available today. Its shelving, also in rich hickory-grain vinyl, meets virtually all audio needs. An optional rack mount kit (RMK-300) is available for the top section, in place of the shelf. Unit has a lift-up slide-back door covering the record and tape storage area. Comes with easy-to-assemble instructions (requires only a standard screwdriver).

Overall Dimensions — 63½" (H) x 19½" (D) x 21½" (W); **Turntable Area** — 19½" (W) x 19¾" (D); **Shelf Areas** — 19½" (W) x 14½" (D) (top) — 19½" (W) x 19¾" (D) (bottom); **Weight** — 101 lbs.



EQ-400

Lo-Boy Component Equipment Cabinet

Cabinet and shelves are completely finished in rich hickory-grain vinyl laminates. This sturdy lo-boy styled cabinet is designed to handle most audio equipment. It can even accommodate an open reel tape deck, plus a turntable. The storage area has a lift-up slide-back door for storing records and tapes. Moves easily on five dual-wheel hooded casters. Unit comes with easy-to-assemble instructions (requires only a standard screwdriver).

Overall Dimensions – 30" (H) x 19 3/4" (D) x 41 1/4" (W);

Weight – 89 lbs.



EQ-500

Deluxe Component Equipment Cabinet

This professional-looking cabinet is laminated in rich hickory-grain vinyl and features a tempered smoked-glass door and deluxe dual-wheel hooded casters. Shelves are of hickory-grain vinyl and are adjustable for virtually any audio need. There is ample storage area for records and tapes. Unit comes with easy-to-assemble instructions (requires only a standard screwdriver).

Overall Dimensions—44" (H) x 20" (D) x 23 1/4" (W);

Shelf Area—21 1/4" (W) x 17 3/8" (D); **Weight**—89 lbs.

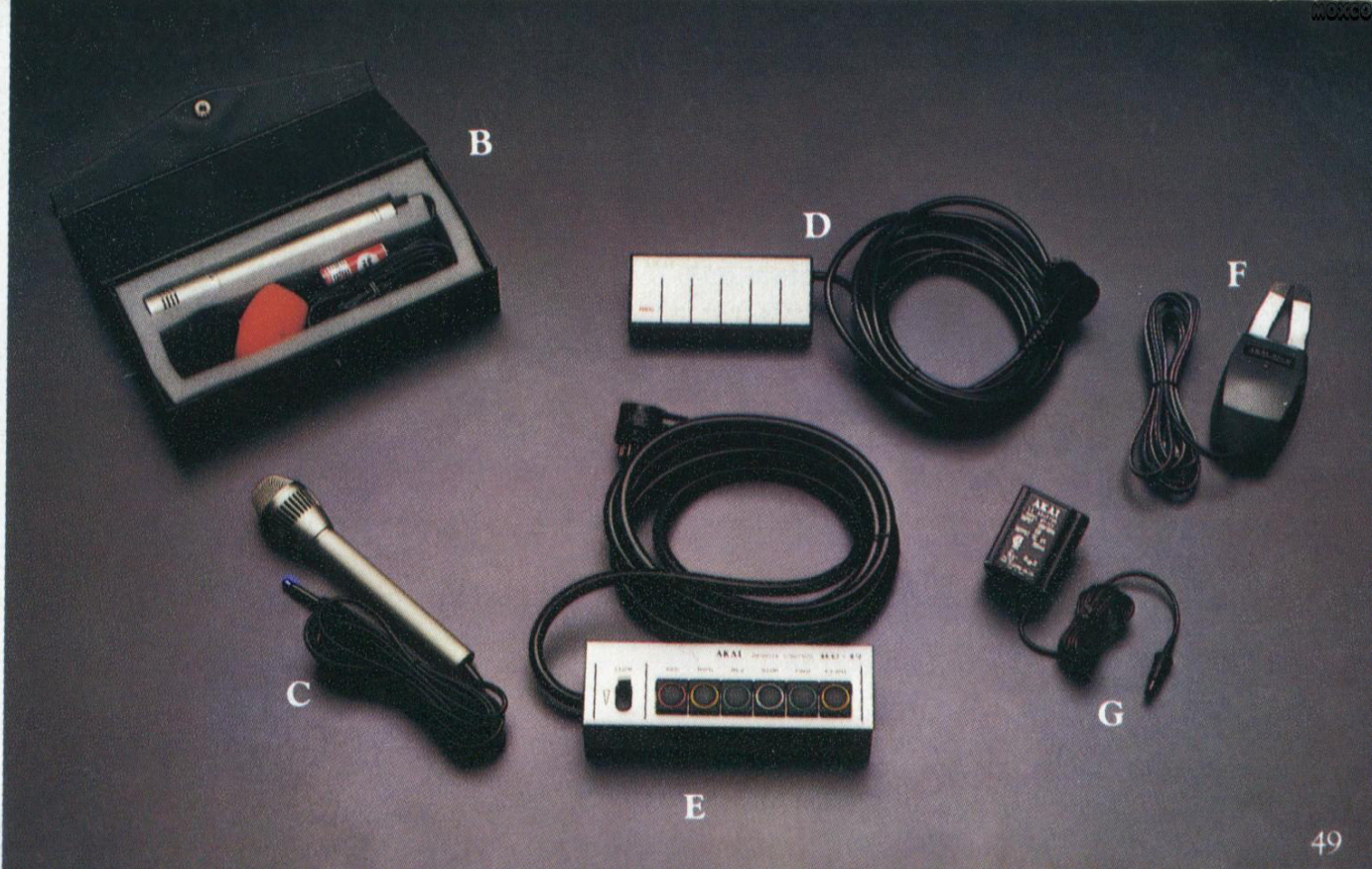




A

ACCESSORIES

- (A) **RC-70** Full Function Wireless Remote Control for GX-P90/P80/GX-650D/635D/630DSS/270D/DSS/PRD-1000
- (B) **ACM-100** Electret Condenser Mic, Hi Z
- (C) **ACM-80** Electret Condenser Mic, Med. Z
- (D) **RC-18** Remote Control for GX-P90/P80/GXC-750D/GX-650D/635D
- (E) **RC-17** Remote Control for GX-400D/DSS/270D/630 Series/650D/GXC-570D



B

D

F

C

E

G

- (F) **AH-15** Tape Head Demagnetizer for GX Heads
- (G) **MP-120** AC Adapter for MM-62 Mixer
- (H) **DC-230** Dust Cover for GX-230D/265D/270D/650D
- (I) **DC-44** Dust Cover for 4000DB/DS/4400
- (J) **R-10M** 10½" Empty Reel (Aluminum)
- (K) **R-7M** 7" Empty Reel (Aluminum)
- (L) **RH-12** 10½" Reel Holders (NAB) Pair
- (M) **MM-62** Portable Mic/Line Mixer
 - DC-4000** Dust Cover for GX-4000D/DB (Not Shown)
 - DC-635** Dust Cover for GX-635D/DB
 - DC-630** Dust Cover for GX-630D/DB/270DSS
 - DC-630S** Dust Cover for GX-630DSS
 - DC-620** Dust Cover for GX-620
 - DC-255** Dust Cover for GX-255
 - DC-1722** Dust Cover for 1722
 - HS-10** Headshell for AP-B10C
 - HS-30** Headshell for AP-100/206/306/207/307



Dear Customer:

Thank you for your interest in AKAI. Should you desire additional information on any particular product, please complete the following and return to: AKAI AMERICA, LTD., P.O. Box 6010, 2139 E. Del Amo Blvd., Compton, CA 90224.

Send Detail Information on: MODEL # _____ MODEL # _____
 MODEL # _____ MODEL # _____

Name _____

Street _____

City _____

State _____ Zip _____

NOTE: All features and specifications subject to change without notice.

