

Hi-Fi Music Centers



Speakers are not included

AC-3750S/L

FM/AM HI-FI MUSIC CENTER

Features: Semi-automatic turntable with MM cartridge, Built-in Dolby NR circuit, FM mute switch, Tape selector switches **Rated Output Power:** 2×28 watts at 8 ohms (40–20,000 Hz, T.H.D. 0.3%) **Music Power:** 82 watts **FM Sensitivity (IHF):** 1.9 μV **FM S/N Ratio:** 70 dB **Wow and Flutter:** 0.2% (DIN 45500), 0.08% **WRMS Frequency Response:** 35–14,000 Hz (±3 dB, SA) **S/N Ratio:** 52 dB, Dolby NR switch ON: Improves up to 10 dB above 5 kHz **Connections:** Tape deck ×1, DIN jack ×1, Speaker ×2, Headphone ×1, Microphone ×2 **Dimensions:** 707 (W) × 203 (H) × 489 (D) mm (27.8" × 8.0" × 19.3") **Weight:** 18 kg (39.6 lbs) **AC-3750S:** FM/MW/SW₁/SW₂, **AC-3750L:** FM/MW/SW/LW

*Black panel model is also available.

Hi-Fi Compacts



Speakers are not included

AC-3400S/L

FM/AM HI-FI COMPACT

Features: Built-in Dolby NR circuit, FM mute switch, Tape selector switches **Rated Output Power:** 2×28 watts at 8 ohms (40–20,000 Hz, T.H.D. 0.3%) **Music Power:** 82 watts **FM Sensitivity (IHF):** 1.9 μV **FM S/N Ratio:** 70 dB **Wow and Flutter:** 0.2% (DIN 45500), 0.08% **WRMS Frequency Response:** 35–14,000 Hz (±3 dB, SA) **S/N Ratio:** 52 dB, Dolby NR switch ON: Improves up to 10 dB above 5 kHz **Connections:** Tape deck ×1, DIN jack ×1, Speaker ×2, Headphone ×1, Microphone ×2 **Dimensions:** 707 (W) × 148 (H) × 489 (D) mm (27.8" × 5.8" × 19.3") **Weight:** 13.0 kg (28.6 lbs) **AC-3400S:** FM/MW/SW₁/SW₂, **AC-3400L:** FM/MW/SW/LW

*Black panel model is also available.

AKAI

AUDIO EQUIPMENT

AKAI

EQUIPMENT AUDIO

AKAI

AUDIO ANLAGE

AKAI

AUDIO UTRUSTING

AKAI

AUDIO UTRUSTNING

AKAI

EQUIPO AUDIO

AKAI

© beim Hersteller
Archiv Michael Otto
Hifi Classic.de

Radio Cassette Recorders



AJ-500FS/FL

STEREO 4 BAND RADIO CASSETTE RECORDER

Features: 2-WAY 4-SPEAKER, IPLS (Instant Program Locating System), Multi-mixing system, Recording mute circuit, 4-way LED indicators, Absentee recording, Sensitive FM/MW/SW/LW (AJ-500FL), FM/MW/SW₁/SW₂ (AJ-500FS), NORM/CrO₂/FeCr tape selector, Mic. mixing jack, Built-in electret condenser mic x 2, Built-in phono equalizer amp. **Maximum Output Power:** 2 x 6,000 mW **Speakers:** Woofer 16 cm x 2, Tweeter 5 cm x 2 **Power Supply:** AC/DC (12 V) **Dimensions:** 500 (W) x 323 (H) x 162 (D) mm (19.7" x 12.7" x 6.4") **Weight:** 6.5 kg (14.3 lbs)



AJ-490FS/FL

STEREO 4 BAND RADIO CASSETTE RECORDER

Features: 2-WAY 4-SPEAKER, Cue and Review, 4-way LED indicators, Absentee recording, Sensitive FM/MW/SW₁/SW₂ (AJ-490FS), FM/MW/SW/LW (AJ-490FL), NORMAL/CrO₂ tape selector, Built-in electret condenser mic. x 2, Built-in phono equalizer amp. **Maximum Output Power:** 2 x 3,800 mW **Speakers:** Woofer 12 cm x 2, Tweeter 4 cm x 2 **Power Supply:** AC/DC (9 V) **Dimensions:** 440 (W) x 260 (H) x 162 (D) mm (17.3" x 10.2" x 6.4") **Weight:** 5.0 kg (11 lbs)



AJ-360FS/FL/MS

3 BAND RADIO CASSETTE RECORDER

Features: One-push recording button system, Cue and Review, Built-in electret condenser microphone, Beat cut switch, Auto-stop, Sensitive FM/MW/SW (AJ-360FS) FM/MW/LW (AJ-360FL), MW/SW₁/SW₂ (AJ-360MS) **Maximum Output Power:** 5,000 mW **Speakers:** 16 cm x 1 **Power Supply:** AC/DC (7.5 V) **Dimensions:** 383 (W) x 243 (H) x 106 (D) mm (15.1" x 9.6" x 4.2") **Weight:** 3.5 kg (7.5 lbs)



GX-15D

3-HEAD 3-MOTOR STEREO TAPE DECK

Features: Automatic/manual forward and reverse playback, 4-track 2-channel stereo system, GX heads, Auto stop, Pause lever, Tape selector, Hysteresis synchronous motor x 1, Eddy current outer rotor motor x 2 **Tape Speed:** 19, 9.5 cm/sec **Wow and Flutter:** 0.09% RMS at 19 cm/sec **Frequency Response:** 30-25,000 Hz (±3 dB, 19 cm/sec) **S/N Ratio:** 56 dB **Dimensions:** 380 (W) x 390 (H) x 295 (D) mm (15.0" x 15.4" x 11.6") **Weight:** 15.7 kg (34.6 lbs)

* Black panel model is also available.



1722II

STEREO TAPE RECORDER

Features: Built-in Phono amplifier and Main amplifier, PA system, Built-in two speakers (Left and Right), Tape selector, Mute switch, 4-track 2-channel stereo system, 2-speed induction motor x 1 **Continuous Power Output:** 2 x 3 watts at 8 ohms **Music Power:** 2 x 5 watts at 8 ohms **Tape Speed:** 19, 9.5 cm/sec **Wow and Flutter:** 0.14% RMS at 19 cm/sec **Frequency Response:** 30-21,000 Hz (±3 dB, 19 cm/sec) **S/N Ratio:** 50 dB **Dimensions:** 358 (W) x 360 (H) x 248 (D) mm (14.0" x 14.1" x 9.8") **Weight:** 13.2 kg (29 lbs)

Cartridge Tape Deck



CR-83D

8-TRACK STEREO CARTRIDGE DECK

Features: Elapsed time tape counter, Automatic stop and continuous playback, Fast forward and pause controls, Long scale VU meters **Track System:** 8-track 2-channel stereo system **Wow and Flutter:** 0.15% WRMS **Frequency Response:** 60-14,000 Hz (±3 dB) **S/N Ratio:** 48 dB **Dimensions:** 420 (W) x 110 (H) x 245 (D) mm (16.5" x 4.3" x 9.6") **Weight:** 5.3 kg (11.7 lbs)



GX-4000D

GX-4000D/DB

3-HEAD STEREO TAPE DECK

Features: GX heads, 4-track 2-channel stereo system, Sound on sound recording, Mic and Line mixing, Tape monitor switch, Tape selector, Output level control, Pause lever, 4-pole induction motor, Track selector, Dolby NR system (GX-4000DB only) **Tape Speed:** 19, 9.5 cm/sec **Wow and Flutter:** 0.08% WRMS at 19 cm/sec **Frequency Response:** 30-24,000 Hz (±3 dB, 19 cm/sec) **S/N Ratio:** 60 dB, (Dolby NR switch ON: Improves up to 10 dB above 5 kHz, GX-4000DB only) **Dimensions:** 440 (W) x 315 (H) x 230 (D) mm (17.3" x 12.4" x 9.1") **Weight:** 13.2 kg (29.1 lbs)

* Black panel model is also available.

© beim Hersheller
Archiv Michael Otto
HiFi-Classic.de

Quick Cassette Decks



GXC-704D

STEREO CASSETTE DECK

Features: GX head, Dolby NR system, Four position tape selector, Peak level indicator, Large recording level controls, Output level control **Wow and Flutter**: 0.14% (DIN 45500), 0.05% WRMS **Frequency Response**: 35–15,000 Hz (± 3 dB, CrO₂, SA) **S/N Ratio**: 56 dB, Dolby NR switch ON: Improves up to 10 dB above 5 kHz **Dimensions**: 380 (W) x 150 (H) x 295 (D) mm (15.0" x 5.9" x 11.6") **Weight**: 5.2 kg (11.4 lbs)

*Black panel model is also available.



CS-703D

STEREO CASSETTE DECK

Features: IC equipped Dolby NR system, Tape selector, Left and right Recording level controls, Extra wide piano type control keys, Speed electrically controlled DC motor x 1 **Wow and Flutter**: 0.16% (DIN 45500), 0.06% WRMS **Frequency Response**: 45–15,000 Hz (± 3 dB, CrO₂, SA) **S/N Ratio**: 56 dB, Dolby NR switch ON: Improves up to 10 dB above 5 kHz **Dimensions**: 380 (W) x 150 (H) x 266 (D) mm (15.0" x 5.9" x 10.5") **Weight**: 5.1 kg (11.2 lbs)

*Black panel model is also available.



GXC-706DX

ADRES SYSTEM STEREO CASSETTE DECK

Features: ADRES System, GX head, Four-position tape selector, Peak level indicator, Input selector, Large recording level controls, Output level control **Wow and Flutter**: 0.16% (DIN 45500), 0.05% WRMS **Frequency Response**: 35–15,000 Hz (± 3 dB, CrO₂, SA) **S/N Ratio**: 76 dB (ADRES ON) **Dynamic Range**: (1 kHz): 100 dB (ADRES ON), 77 dB (ADRES OFF) **Dimensions**: 440 (W) x 150 (H) x 290 (D) mm (17.3" x 5.9" x 11.4") **Weight**: 6.5 kg (14.4 lbs)



GX-735D

HIFI QUICK REVERSE STEREO CASSETTE DECK

Features: Quick reverse and hifi reverse recording/playback, Both way recording/playback, Continuous playback, Repeat playback with memory rewind, Feather-touch IC logic controls GX head, Two motor drive system, Two peak level indicators, Timer start switch, REC mute switch, Output level control **Wow and Flutter**: 0.12% (DIN 45500), 0.045% WRMS **Frequency Response**: 35–16,000 Hz (± 3 dB, FeCr) **S/N Ratio**: 56 dB, Dolby NR switch ON: Improves up to 10 dB above 5 kHz **Dimensions**: 440 (W) x 150 (H) x 290 (D) mm (17.3" x 5.9" x 11.4") **Weight**: 9.7 kg (21.4 lbs)

*Black panel model is also available.



CS-732D

HIFI QUICK REVERSE STEREO CASSETTE DECK

Features: Quick reverse and hifi reverse recording/playback, Both way recording/playback, Continuous playback, Dolby NR system, Peak level indicator, Input selector, Output level control **Wow and Flutter**: 0.15% (DIN 45500), 0.06% WRMS **Frequency Response**: 35–15,000 Hz (± 3 dB, FeCr) **S/N Ratio**: 56 dB, Dolby NR switch ON: Improves up to 10 dB above 5 kHz **Dimensions**: 440 (W) x 150 (H) x 290 (D) mm (17.3" x 5.9" x 11.42") **Weight**: 8.0 kg (17.7 lbs)

*Black panel model is also available.

10 1/2" Open Reel Tape Decks

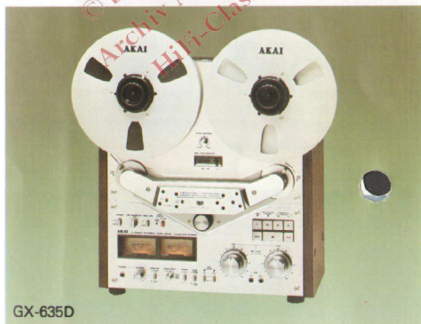


GX-650D

3-HEAD 3-MOTOR STEREO TAPE DECK

Features: 10-1/2" reel capacity, 4 track 2 channel stereo system, GX heads, Mic and Line mixing, Sound-on-sound, Cue switch, Remote control jack (remote control unit RC-70 or RC-18), C.P.G. AC servo motor for closed loop double capstan drive, Eddy current outer rotor motor x 2 **Tape Speed**: 38, 19, 9.5 cm/sec **Wow and Flutter**: 0.04% RMS at 38 cm/sec **Frequency Response**: 30–30,000 Hz (± 3 dB, 38 cm/sec) **S/N Ratio**: 58 dB **Dimensions**: 440 (W) x 524 (H) x 258 (D) mm (17.3" x 20.6" x 10.1") **Weight**: 16.2 kg (35.7 lbs)

*Black panel model is also available.



GX-635D

GX-635D/DB

AUTO REVERSE RECORDING/PLAYBACK SYSTEM

Features: 10-1/2" reel capacity, 6-head 3-motor system, 4-track 2-channel stereo system, GX heads, Mic and Line mixing, Memory marker, Feather-touch IC logic controls, REC mute switch, Real time counter, Remote control jack for RC-70 or RC-18, Timer start switch (GX-635D only), Dolby NR system (GX-635DB only), MPX filter switch (GX-635DB only), C.P.G. AC servo motor with sample and hold circuit, Eddy current outer rotor motor x 2 **Tape Speed**: 19, 9.5 cm/sec **Wow and Flutter**: 0.08% (DIN 45500), 0.03% WRMS (19 cm/s) **Frequency Response**: 30–27,000 Hz (± 3 dB, 19 cm/sec) **S/N Ratio**: 62 dB, (Dolby NR switch ON: Improves up to 10 dB above 5 kHz, GX-635DB only) **Dimensions**: 440 (W) x 483 (H) x 256 (D) mm (17.3" x 19.0" x 10.1") **Weight**: 21 kg (46.4 lbs) *Black panel model is also available.



GX-630D

GX-630D/DB

3-HEAD 3-MOTOR STEREO TAPE DECK

Features: Dolby NR circuit (GX-630DB only), 10-1/2" reel capacity, 4-track 2-channel stereo system, GX heads, C.P.G. AC servo motor for direct capstan drive, Eddy current outer rotor motor x 2, Mic and Line mixing, Remote control jack (remote control unit RC-70 or RC-18) **Tape Speed**: 19, 9.5 cm/sec **Wow and Flutter**: 0.06% RMS at 19 cm/sec **Frequency Response**: 30–25,000 Hz (± 3 dB, 19 cm/sec) **S/N Ratio**: 57 dB (Dolby NR Switch ON: Improves up to 10 dB above 5 kHz ... GX-630DB only) **Dimensions**: 440 (W) x 465 (H) x 240 (D) mm (17.3" x 18.3" x 9.4") **Weight**: 19 kg (41.8 lbs) ... GX-630D, 19.5 kg (42.9 lbs) ... GX-630DB

*Black panel model is also available.



GX-620

3-HEAD 3-MOTOR STEREO TAPE DECK

Features: 10-1/2" reel capacity, 4-track 2-channel stereo system, GX heads, Mic and Line mixing, Track selector switches, Feather-touch IC logic controls, Remote control jack for RC-70 or RC-18, C.P.G. AC servo motor for direct capstan drive with sample and hold circuit, Eddy current outer rotor motor x 2 **Tape Speed**: 19, 9.5 cm/sec **Wow and Flutter**: 0.08% (DIN 45500) at 19 cm/sec, 0.03% WRMS **Frequency Response**: 30–26,000 Hz (± 3 dB, 19 cm/sec, WR tap) **S/N Ratio**: 62 dB at 19 cm/sec **Dimensions**: 440 (W) x 446 (H) x 241 (D) mm (17.3" x 17.6" x 9.5") **Weight**: 17.6 kg (38.9 lbs)

*Black panel model is also available.

7" Open Reel Tape Decks



GX-266II

AUTO REVERSE RECORDING/PLAYBACK STEREO TAPE DECK

Features: Auto reverse recording, 6-head 3-motor system, 4-track 2-channel system, Feather-touch IC logic controls, Timer start switch, REC mute switch, Mic and Line mixing, Memory marker, Pitch control, Remote control jack for RC-70 or RC-18 **Tape Speed**: 19, 9.5 cm/sec **Wow and Flutter**: 0.09% (DIN 45500), 0.03% WRMS at 19 cm/sec **Frequency Response**: 30–26,000 Hz (± 3 dB, 19 cm/sec) **S/N Ratio**: 62 dB **Dimensions**: 440 (W) x 470 (H) x 250 (D) mm (17.3" x 18.5" x 9.8") **Weight**: 18.7 kg (41.3 lbs)

*Black panel model is also available.



GX-255

4-HEAD 3-MOTOR STEREO TAPE DECK

Features: Auto and manual reverse playback, 4-track 2-channel stereo system, GX-heads, Feather-touch IC logic controls, Track selector switches with indicator, Mic and Line mixing, Remote control jack for RC-70 or RC-18 **Tape Speed**: 19, 9.5 cm/sec **Wow and Flutter**: 0.10% (DIN 45500), 0.04% WRMS at 19cm/sec **Frequency Response**: 30–24,000 Hz (± 3 dB, 19 cm/sec) **S/N Ratio**: 61 dB **Dimensions**: 440 (W) x 419 (H) x 242 (D) mm (17.3" x 16.5" x 9.5") **Weight**: 16 kg (35.3 lbs)

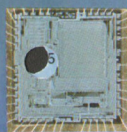
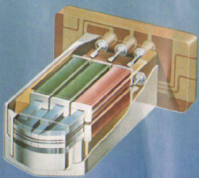
*Black panel model is also available.

Akai Rushes On Into The Future

The reputation and the position of Akai in the field of audio equipment remains as high as ever. A total of fifty years has gone by since the establishment of Akai in 1929, years which have witnessed the invention of the crossfield head, the GX head and now, today, to match the vastly improved tapes on the market sees the advent of the Super GX Head. The twin field Super GX Head incorporated in cassette decks delivers the same performance as the three head system and maintains Akai's leadership in the field of tape decks.

Akai has not been left behind in other fields either and offers many top class models; Digital Quartz Synthesizer Tuners using micro-computers, DC Amplifiers with a greatly reduced TIM distortion, Direct Drive Quartz Lock Turntables featuring a discolith coil DC motor to name but a few.

Twin Field Super GX Head



Micro-computer

Discolith Motor



"Dolby" and the Double D symbol are trademarks of Dolby Laboratories (Manufactured under license from Dolby Laboratories).

Stereo Cassette Decks



GXC-570DII 3-HEAD 3-MOTOR STEREO CASSETTE DECK

Features: Dual monitoring, GX heads, Closed loop double capstan drive system, Sensi-touch IC logic controls, Dolby NR, A.D.R. system, Repeat playback, Memory rewind, Recording calibration controls, Peak/VU meter, Pitch control, Mic and Line mixing, Output level control, Phone level control, FG servo DC motor x1, DC motor x2, Remote control jack (remote control unit RC-70, or RC-18) **Wow and Flutter:** 0.06% WRMS, 0.17% (DIN 45500) **Frequency Response:** 35-19,000 Hz (± 3 dB, FeCr) **S/N Ratio:** 52 dB (Dolby NR Switch ON: Improves up to 10 dB above 5 kHz) **Dimensions:** 440 (W) x 255 (H) x 255 (D) mm (17.3" x 10.0" x 8.9") **Weight:** 9.5 kg (21.0 lbs)



GX-F90 3-HEAD 2-MOTOR STEREO CASSETTE DECK

Features: Dual monitoring, Super GX heads, Metal tape compatibility, Recording calibration controls, Dolby NR system, I.P.L.S. system, A.D.R. system, Repeat playback, Memory rewind, Switchable peak/VU FL display bar meters, Feather-touch IC logic controls, REC mute switch, Rec cancel switch, Timer start switch, Remote control jack for RC-70 or RC-18, Direct capstan drive system **Wow and Flutter:** 0.03% WRMS, 0.08% (DIN 45500) **Frequency Response:** 25-21,000 Hz (± 3 dB, Metal) **S/N Ratio:** 62 dB, Dolby NR switch ON: Improves up to 10 dB above 5 kHz **Dimensions:** 440 (W) x 105 (H) x 370 (D) mm (17.3" x 4.1" x 14.6") **Weight:** 9.8 kg (21.6 lbs)

*Black panel model is also available.



GX-30 3-HEAD 2-MOTOR STEREO CASSETTE DECK

Features: Dual monitoring, Super GX heads, Metal tape compatibility, Feather-touch IC logic controls, Dolby NR system, MPX filter switch, A.D.R. system, Repeat playback, Memory rewind, FL display bar meters with peak level indicator, Mic and Line mixing, Output level control, Remote control jack for RC-70 or RC-18, Timer start switch, REC mute switch, Mono mic recording **Wow and Flutter:** 0.09% (DIN 45500), 0.03% WRMS **Frequency Response:** 25-21,000 Hz (± 3 dB, metal) **S/N Ratio:** 62 dB, Dolby NR switch ON: Improves up to 10 dB above 5 kHz **Dimensions:** 440 (W) x 135 (H) x 340 (D) mm (17.3" x 5.3" x 13.4") **Weight:** 8.9 kg (19.6 lbs)

*Black panel model is also available.



GX-M50 3-HEAD STEREO CASSETTE DECK

Features: Dual monitoring, Super GX heads, Metal tape compatibility, I.P.L.S. (Instant Program Locating System), Dolby NR system, Memory rewind, Switchable peak/VU FL display bar meters, Recording master volume, REC mute switch, Mic and Line mixing, Output level control **Wow and Flutter:** 0.14% (DIN 45500), 0.04% WRMS **Frequency Response:** 25-21,000 Hz (± 3 dB, metal) **S/N Ratio:** 62 dB, Dolby NR switch ON: Improves up to 10 dB above 5 kHz **Dimensions:** 440 (W) x 158 (H) x 276 (D) mm (17.3" x 6.2" x 10.9") **Weight:** 8.0 kg (17.6 lbs)

*Black panel model is also available.



GX-M30 STEREO CASSETTE DECK

Features: Twin field super GX head, Metal tape compatibility, Dolby NR system, A.D.R. system, I.P.L.S. (Instant Program Locating System), Memory rewind, Peak/VU FL display bar meters, REC mute switch, Mic and Line mixing, Output level control, Mono mic recording **Wow and Flutter:** 0.14% (DIN 45500), 0.04% WRMS **Frequency Response:** 30-19,000 Hz (± 3 dB, metal) **S/N Ratio:** 61 dB, Dolby NR switch ON: Improves up to 10 dB above 5 kHz **Dimensions:** 440 (W) x 158 (H) x 276 (D) mm (17.3" x 6.2" x 10.9") **Weight:** 8.0 kg (17.6 lbs)

*Black panel model is also available.



GXC-750D 3-HEAD 3-MOTOR STEREO CASSETTE DECK

Features: Dual monitoring, GX heads, closed loop double capstan drive system, Feather touch IC logic circuit controls, Dolby NR, A.D.R. system, Recording calibration controls, Peak/VU meter, memory rewind, Mic and Line mixing, Output level control, Remote control jack (remote control unit RC-70, or RC-18), FG servo DC motor x1, DC motor x2 **Wow and Flutter:** 0.06% WRMS, 0.17% (DIN 45500) **Frequency Response:** 35-18,000 Hz (± 3 dB, FeCr) **S/N Ratio:** 56 dB (Dolby NR Switch ON: Improves up to 10 dB above 5 kHz) **Dimensions:** 440 (W) x 157 (H) x 218 (D) mm (17.3" x 6.2" x 12.5") **Weight:** 9.5 kg (21.0 lbs)

*Black panel model is also available.



GXC-725D 3-HEAD STEREO CASSETTE DECK

Features: Dual monitoring, GX heads, Dolby NR, MPX filter switch, Peak level indicator, Output level control, Four position tape selector, Speed electronically controlled DC motor x1 **Wow and Flutter:** 0.06% WRMS, 0.18% (DIN 45500) **Frequency Response:** 35-17,000 Hz (± 3 dB, FeCr) **S/N Ratio:** 51 dB (Dolby NR Switch ON: Improves up to 10 dB above 5 kHz) **Dimensions:** 440 (W) x 165 (H) x 285 (D) mm (17.3" x 6.5" x 11.2") **Weight:** 6.9 kg (15.2 lbs)

*Black panel model is also available.



GXC-715D STEREO CASSETTE DECK

Features: GX head, Dolby NR system, A.D.R. system, Two peak level indicators, Mic and Line mixing, Feather-touch IC logic controls, Repeat playback, Memory rewind, REC mute switch, Timer start switch, Two motor system, Output level control **Wow and Flutter:** 0.12% (DIN 45500), 0.04% WRMS **Frequency Response:** 35-16,000 Hz (± 3 dB, FeCr) **S/N Ratio:** 56 dB, Dolby NR switch ON: Improves up to 10 dB above 5 kHz **Dimensions:** 440 (W) x 138 (H) x 273 (D) mm (17.3" x 5.4" x 10.8") **Weight:** 8.5 kg (18.8 lbs)

*Black panel model is also available.



GXC-709D FRONT LOADING STEREO CASSETTE DECK

Features: GX head, Dolby NR, A.D.R. system, Line and Mic mixing, Two peak level indicators, Four position tape selector, MPX filter switch, Limiter, Memory rewind, Output level control **Wow and Flutter:** 0.06% WRMS, 0.18% (DIN 45500) **Frequency Response:** 35-16,000 Hz (± 3 dB, FeCr) **S/N Ratio:** 51 dB (Dolby NR Switch ON: Improves up to 10 dB above 5 kHz) **Dimensions:** 440 (W) x 165 (H) x 285 (D) mm (17.3" x 6.5" x 11.2") **Weight:** 6.5 kg (14.4 lbs)

*Black panel model is also available.



GXC-706D FRONT LOADING STEREO CASSETTE DECK

Features: GX head, Dolby NR system, Four position tape selector, Peak level indicator, Input selector, Large recording level controls, Output level control **Wow and Flutter:** 0.055% WRMS, 0.17% (DIN 45500) **Frequency Response:** 35-15,000 Hz (± 3 dB, SA) **S/N Ratio:** 56 dB (Dolby NR Switch ON: Improves up to 10 dB above 5 kHz) **Dimensions:** 440 (W) x 150 (H) x 290 (D) mm (17.3" x 5.9" x 11.4") **Weight:** 6.5 kg (14.4 lbs)

*Black panel model is also available.

PS-Series



PS-200M/120M PS-200M

STEREO DC POWER AMPLIFIER

Features: Completely DC power amplifier, Cut-core power transformer (PS-200M only), Separate two power supply system, Subsonic filter switch, Peak power output meter x2, LED peak level indicators, Input level controls
Rated Power Output: 220 watts at 8 ohms (20–20,000 Hz, T.H.D. 0.008%), (130 watts; PS-120M) **Signal to noise ratio (IHF "A"):** 115 dB **Damping Factor (IHF "A"):** 350 **Subsonic Filter:** 12 dB/Oct. at 18 Hz **Dimensions:** 440 (W) x 198 (H) x 459 (D) mm (17.3" x 7.8" x 18.1") **Weight:** 30 kg (66 lbs)

*Black panel model is also available.



PS-200C

STEREO DC PREAMPLIFIER

Features: DC No head amplifier, DC phono equalizer amplifier, Cut-core transformer, MM cartridge impedance switch, Attenuator volume control, Loudness switch, Subsonic filter switch, Bass and Treble tone controls, 5-position tape monitor switch, Muting switch, Tone switch **Phono max. input level (1 kHz):** PHONO 1/2 450 mV, PHONO 3 10 mV **Phono RIAA curve deviation:** PHONO 1/2/3 30–15,000 Hz ± 0.2 dB **Input sensitivity/impedance/signal to noise ratio:** PHONO 1 (MM) 2.5 mV/33, 47, 100 kohms/88 dB, PHONO 2 (MM) 2.5 mV/33, 47 kohms/88 dB, PHONO 3 (MC) 0.07 mV/10 ohms/72 dB **Dimensions:** 440 (W) x 90 (H) x 457 (D) mm (17.3" x 3.5" x 17.8") **Weight:** 7.5 kg (16.5 lbs)

*Black panel model is also available.



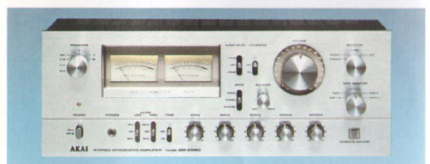
PS-200T

FM/AM DIGITAL QUARTZ SYNTHESIZER TUNER

Features: Microcomputer operation system, Auto scanning system, Auto preset address scanning system, Preset address (FM, 15, AM, 15), FM muting circuit, fixed and variable, FM IF band selector switches, Multipath indicator, FL digital display, Sensi-touch buttons **FM sensitivity (IHF):** 0.8 μ V (75 ohms), **FM capture ratio:** 1.0 dB **FM selectivity (IHF):** 100 dB **FM Spurious Rejection:** 110 dB (98 MHz) **FM Stereo Separation:** 50 dB (1 kHz) **FM Signal to Noise Ratio:** 75 dB **Dimensions:** 440 (W) x 90 (H) x 443 (D) mm (17.3" x 3.5" x 17.4") **Weight:** 7.8 kg (3.5 lbs)

*Black panel model is also available.

Stereo Integrated Amplifiers



AM-2950

STEREO INTEGRATED AMPLIFIER

Features: DC main amplifier section, Power output level meter x2, 100/400/1 k/4 k/10 kHz graphic equalizer, -15 dB/0 dB/-30 dB audio mute switch, Loudness switch, High and low filter switches, Tone switch, 5-position tape monitor switch, Cartridge impedance selector switch **Rated Output Power:** 2 x 120 watts at 8 ohms (20–20,000 Hz, T.H.D. 0.06%) **Connections:** Phono x2, Tuner x1, Aux x1, Tape deck x2, DIN jack x1, Pre out x1, Main in x1, Speaker x3, Headphone x1 **Dimensions:** 440 (W) x 170 (H) x 430 (D) mm (17.3" x 6.7" x 16.9") **Weight:** 17.8 kg (39.2 lbs)

*Black panel model is also available.

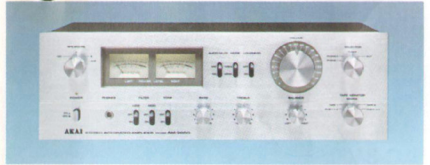


AM-2850

STEREO INTEGRATED AMPLIFIER

Features: DC main amplifier section, Power output level meter x2, Audio mute switch, Tone switch, Bass/Midrange/Treble tone controls, Loudness switch, 5-position tape monitor switch, High and low filter switches, Click type main volume control, Mono/Stereo mode switch, Cartridge impedance selector switch **Rated Output Power:** 2 x 85 watts at 8 ohms (20–20,000 Hz, T.H.D. 0.08%) **Connections:** Phono x2, Tuner x1, Aux x1, Tape deck x2, DIN jack x1, Speaker x3, Main in x1, Pre out x1, Headphone x1 **Dimensions:** 440 (W) x 170 (H) x 430 (D) mm (17.3" x 6.7" x 16.9") **Weight:** 15.7 kg (34.5 lbs)

*Black panel model is also available.



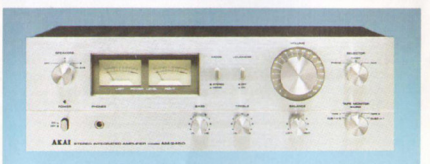
AM-2650

STEREO INTEGRATED AMPLIFIER

Features: Power output level meter x2, Audio mute switch, Tone defeat switch, Bass/Treble tone controls, Loudness switch, 5-position tape monitor switch, High and Low filter switches, Click type main volume control Mono/Stereo mode switch, Cartridge impedance selector switch **Rated Output Power:** 2 x 65 watts at 8 ohms (20–20,000 Hz, T.H.D. 0.08%) **Connections:** Phono x2, Tuner x1, Aux x1, Tape deck x2, DIN jack x1, Speaker x2, Headphone x1 **Dimensions:** 440 (W) x 144 (H) x 345 (D) mm (17.3" x 5.7" x 13.6") **Weight:** 10.9 kg (23.5 lbs)

*Black panel model is also available.

FM/AM Stereo Tuner



AM-2450

STEREO INTEGRATED AMPLIFIER

Features: Bass tone control, Treble tone control, Loudness switch, Stereo/Mono mode switch, 5-position tape monitor switch, Click type main volume control **Rated Output Power:** 2 x 45 watts at 8 ohms (20–20,000 Hz, T.H.D. 0.1%) **Connections:** Phono x1, Tuner x1, Aux x1, Tape deck x2, DIN jack x1, Speaker x2, Headphone x1 **Dimensions:** 440 (W) x 144 (H) x 345 (D) mm (17.3" x 5.6" x 13") **Weight:** 9.9 kg (20 lbs)

*Black panel model is also available.



AM-2350

STEREO INTEGRATED AMPLIFIER

Features: Output level meter x2, Tape monitor switch, Loudness switch, Bass and Treble tone controls, Balance control **Rated Output Power:** 2 x 35 watts at 8 ohms (20,000 Hz, T.H.D. 0.2%) **Connections:** Phono x1, Tuner x1, Aux x1, Tape x2, DIN jack x1, Speaker x2, Headphone x1 **Dimensions:** 380 (W) x 123 (H) x 241 (D) mm (15" x 4.8" x 9.5") **Weight:** 7 kg (15.4 lbs)

*Black panel model is also available.



AM-2250

STEREO INTEGRATED AMPLIFIER

Features: Tape monitor switches for dubbing, Bass and Treble tone controls, Loudness switch, Balance control, Click type main volume control **Rated Output Power:** 2 x 25 watts at 8 ohms (20–20,000 Hz, T.H.D. 0.2%) **Connections:** Phono x1, Tuner x1, Aux x1, Tape deck x2, DIN jack x1, Speaker x2, Headphone x1 **Dimensions:** 380 (W) x 130 (H) x 220 (D) mm (15" x 4.7" x 10.3") **Weight:** 6.2 kg (13.7 lbs)

*Black Panel model is also available.

FM/AM Stereo Tuner



AT-S08

FM/AM DIGITAL QUARTZ SYNTHESIZER TUNER

Features: Micro computer operation system, Auto scanning system, Auto preset address scanning system, Preset address (FM, 10, AM, 10), FM variable muting circuit, FL digital display **FM Sensitivity (IHF):** 0.9 μ V (75 ohms) **FM Capture Ratio:** 1 dB **FM Selectivity (IHF):** 100 dB **FM Spurious Rejection:** 110 dB **FM Stereo Separation:** 50 dB **FM Signal to Noise Ratio:** 75 dB **Dimensions:** 440 (W) x 90 (H) x 457 (D) mm (17.3" x 3.5" x 17.4") **Weight:** 7.7 kg (3.5 lbs)

*Black panel model is also available.



AT-2650

FM/AM STEREO TUNER

Features: Noise canceller, Signal/strength meter, Variable FM muting circuit, Tuning meter, Output level control **FM Sensitivity (IHF):** 1.6 μ V **FM Capture Ratio (IHF):** 1.2 dB **FM Selectivity (IHF):** 80 dB **FM Stereo Separation:** 45 dB at 1 kHz **FM S/N Ratio:** 75 dB **Dimensions:** 440 (W) x 144 (H) x 368 (D) mm (17.3" x 5.7" x 14.5") **Weight:** 7.5 kg (16.5 lbs)

*Black panel model is also available.



AT-2450

FM/AM STEREO TUNER

Features: Variable FM muting circuit, Output level control, Signal strength meter, Tuning meter **FM Sensitivity (IHF):** 1.7 μ V **FM Capture Ratio (IHF):** 1.2 dB **FM Selectivity (IHF):** 80 dB **FM Stereo Separation:** 45 dB at 1 kHz **FM S/N Ratio:** 75 dB **Dimensions:** 440 (W) x 141 (H) x 336 (D) mm (17.3" x 5.7" x 14.5") **Weight:** 7.3 kg (16.1 lbs)

*Black panel model is also available

*AT-2450L FM/MW/LW Stereo Tuner is also available.

FM/AM Stereo Receivers



AT-2250

FM/AM STEREO TUNER

Features: FM muting circuit, Output level control, Signal strength meter, Tuning meter **FM Sensitivity (IHF):** 1.9 μ V **FM Capture Ratio (IHF):** 1.3 dB **FM Selectivity (IHF):** 80 dB **FM Stereo Separation:** 42 dB at 1 kHz **FM S/N Ratio:** 70 dB **Dimensions:** 380 (W) x 118 (H) x 263 (D) mm (15" x 4.7" x 16.6") **Weight:** 4.2 kg (9.2 lbs)

*Black panel model is also available.

*AT-2200L FM/MW/LW Stereo Tuner is also available.

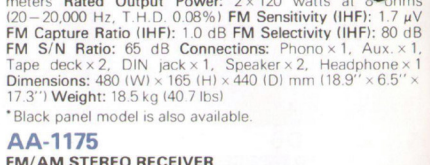


AA-1200

FM/AM STEREO RECEIVER

Features: 2-power supply system, 150 W/3 W watt meter x2, Variable FM muting circuit, Bass/Midrange/Treble tone controls, High and Low filter switches, Loudness switch, Stereo/Mono mode selector switch, 5-position tape monitor switch, Long scale, Large tuning knob, Signal and tuning meters **Rated Output Power:** 2 x 120 watts at 8 ohms (20–20,000 Hz, T.H.D. 0.08%) **FM Sensitivity (IHF):** 1.7 μ V **FM Capture Ratio (IHF):** 1.0 dB **FM Selectivity (IHF):** 80 dB **FM S/N Ratio:** 65 dB **Connections:** Phono x1, Aux x1, Tape deck x2, DIN jack x1, Speaker x2, Headphone x1 **Dimensions:** 480 (W) x 165 (H) x 440 (D) mm (18.9" x 6.5" x 17.3") **Weight:** 18.5 kg (40.7 lbs)

*Black panel model is also available.



AA-1175

FM/AM STEREO RECEIVER

Features: 2-power supply system, Variable FM muting circuit, Bass/Midrange/Treble tone controls, High and Low filter switches, Loudness switch, Stereo/Mono mode selector switch, 5-position tape monitor switch, Long scale, Large tuning knob, Signal and Tuning meters **Rated Output Power:** 2 x 75 watts at 8 ohms (20–20,000 Hz, T.H.D. 0.08%) **FM Sensitivity (IHF):** 1.7 μ V **FM Capture Ratio (IHF):** 1.0 dB **FM Selectivity (IHF):** 80 dB **FM S/N Ratio:** 65 dB **Connections:** Phono x1, Aux x1, Tape deck x2, DIN jack x1, Speaker x2, Headphone x1 **Dimensions:** 480 (W) x 165 (H) x 440 (D) mm (18.9" x 6.5" x 17.3") **Weight:** 16.5 kg (36.3 lbs)

*Black panel model is also available.



AA-1150

AA-1150

FM/AM STEREO RECEIVER

Features: Variable FM muting circuit, High and Low filter switches, Loudness switch, 5-position tape monitor switch
Rated Output Power: 2 x 50 watts at 8 ohms (20–20,000 Hz, T.H.D. 0.1%)
FM Sensitivity (IHF): 1.7 µV
FM Capture Ratio (IHF): 1.3 dB
FM Selectivity (IHF): 70 dB
FM S/N Ratio: 65 dB
Connections: Phono x 1, Aux. x 1, Tape deck x 1, DIN jack x 1, Speaker x 2, Headphone x 1
Dimensions: 480 (W) x 155 (H) x 345 (D) mm (18.9" x 6.1" x 13.6")
Weight: 11.7 kg (25.7 lbs)
*Black panel model is also available.

AA-1135

FM/AM STEREO RECEIVER

Features: FM mute switch, Loudness switch, PLL MPX circuit, 5-position tape monitor switch
Rated Output Power: 2 x 35 watts at 8 ohms (20–20,000 Hz, T.H.D. 0.2%)
FM Sensitivity (IHF): 1.8 µV
FM Capture Ratio (IHF): 1.3 dB
FM Selectivity (IHF): 70 dB
FM S/N Ratio: 65 dB
Connections: Phono x 1, Aux. x 1, Tape deck x 2, DIN jack x 1, Speaker x 2, Headphone x 1
Dimensions: 480 (W) x 155 (H) x 345 (D) mm (18.9" x 6.1" x 13.6")
Weight: 10.8 kg (23.8 lbs)

AA-1135L FM/MW/LW STEREO RECEIVER

*Black panel model is also available.



AA-1125

AA-1125

FM/AM STEREO RECEIVER

Features: Tape monitor switch x 2, Built in FM mute circuit, Tuning and signal meter
Rated Output Power: 2 x 25 watts at 8 ohms (20–20,000 Hz, T.H.D. 0.3%)
FM Sensitivity (IHF): 1.9 µV
FM Capture Ratio (IHF): 1.3 dB
FM Selectivity (IHF): 70 dB
FM S/N Ratio: 65 dB
Connections: Phono x 1, Aux. x 1, Tape deck x 2, DIN jack x 1, Speaker x 2, Headphone x 1
Dimensions: 480 (W) x 123 (H) x 268 (D) mm (18.9" x 4.8" x 10.6")
Weight: 6.8 kg (15 lbs)
*Black panel model is also available.

AA-1115

FM/AM STEREO RECEIVER

Features: Tuning and signal meter, Tape monitor switch, Built-in FM mute circuit, PLL MPX circuit
Rated Output Power: 2 x 15 watts at 8 ohms (20–20,000 Hz, T.H.D. 0.5%)
FM Sensitivity (IHF): 1.9 µV
FM Capture Ratio (IHF): 1.3 dB
FM Selectivity (IHF): 70 dB
FM S/N Ratio: 65 dB
Connections: Phono x 1, Aux. x 1, Tape deck x 1, DIN jack x 1, Speaker x 2, Headphone x 1
Dimensions: 480 (W) x 123 (H) x 268 (D) mm (18.9" x 4.8" x 10.6")
Weight: 5.8 kg (12.8 lbs)
*Black panel model is also available.

Turntables



AP-306C

AP-307

DIRECT DRIVE QUARTZ LOCK TURNTABLE

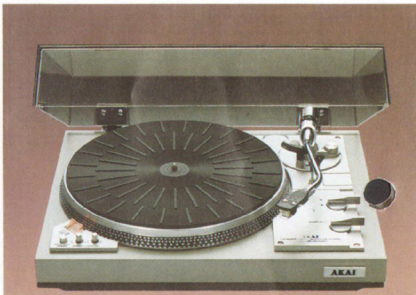
Features: Automatic start, stop, tonearm return and repeat playback, Stroboscope and strobe light, Pitch controls, Quartz Locked PLL circuit, Hinged smoked acrylic dust cover
Motor: DC servo motor x 1
Speed: 33-1/3, 45 r.p.m.
Wow and Flutter: 0.035% (DIN), 0.025% (JIS)
Rumble: 49 dB (DIN A), 70 dB (DIN B)
Tone arm: Static balance type
Dimensions: 440 (W) x 158 (H) x 350 (D) mm (17.3" x 6.2" x 13.8")
Weight: 8.6 kg (18.9 lbs)

AP-306 AUTOMATIC TONE ARM RETURN SYSTEM

AP-306C AUTOMATIC TONE ARM RETURN SYSTEM

With Tri-pole Induced Magnet Cartridge PC-100

*Black panel models are also available.



AP-206C

AP-207

DIRECT DRIVE FULLY AUTOMATIC TURNTABLE

Features: Automatic start, stop, tone arm return and repeat playback, Stroboscope and strobe light, Pitch controls, Hinged, smoked acrylic dust cover
Motor: DC servo motor x 1
Speed: 33-1/3, 45 r.p.m.
Wow and Flutter: 0.035% (DIN), 0.025% (JIS)
Rumble: 49 dB (DIN A), 70 dB (DIN B)
Tone arm: Static balanced type
Dimensions: 440 (W) x 158 (H) x 350 (D) mm (17.3" x 6.2" x 13.8")
Weight: 7.9 kg (17.4 lbs)

AP-206 AUTOMATIC TONE ARM RETURN SYSTEM

AP-206C AUTOMATIC TONE ARM RETURN SYSTEM

With Tri-pole Induced Magnet Cartridge PC-100

*Black panel models are also available.



AP-B20/C

AUTO-RETURN TURNTABLE

Features: Auto-stop and tone arm return, Anti-skating adjuster, Dual magnet type cartridge (AP-B20C only)
Motor: 4-pole synchronous motor for belt drive
Speed: 33-1/3, 45 r.p.m.
Wow and Flutter: 0.05% (DIN)
Rumble: 65 dB (DIN B)
Tone Arm: Static-balanced type
Dimensions: 440 (W) x 355 (D) mm (17.3" x 5.3" x 14.0")
Weight: 5.9 kg (13.1 lbs)
*Black panel model is also available.



AP-B10/C

MANUAL TURNTABLE

Features: Anti-skating adjuster, Smoked acrylic dust cover, Dual magnet type cartridge (AP-B10C only)
Motor: 4-pole synchronous motor for belt drive
Speed: 33-1/3, 45 r.p.m.
Wow and Flutter: 0.05% (DIN)
Rumble: 65 dB (DIN B)
Tone Arm: Static-balanced type
Dimensions: 440 (W) x 355 (D) mm (17.3" x 5.3" x 14.0")
Weight: 5.8 kg (12.8 lbs)
*Black panel model is also available.



AP-100/C

SEMI AUTOMATIC TURNTABLE

Features: Automatic stop, Automatic tone arm return, Anti-skating adjuster, Smoked acrylic dust cover, Tri-pole IM type cartridge (AP-100C only)
Motor: 4-pole synchronous motor
Speed: 33-1/3, 45 r.p.m.
Wow and Flutter: 0.05% WRMS (JIS)
Rumble: 53 dB (JIS), 64 dB (DIN B)
Tone Arm: S-shaped static-balanced type
Dimensions: 440 (W) x 145 (H) x 355 (D) mm (17.3" x 5.7" x 14.0")
Weight: 6.1 kg (13.4 lbs)
*Black panel model is also available.

Speaker Systems



SW-187

3-WAY 3-SPEAKER SYSTEM

Features: High and Midrange level controls, Large capacity and heavy enclosure
Maximum Input Power: 120 watts (DIN)
Rated Input Power: 80 watts (DIN)
Speakers: Woofer 30 cm x 1, Midrange 12 cm x 1, Tweeter 4 cm x 1
Sensitivity: 91 dB/Watt/m
Frequency Response: 35–20,000 Hz (DIN)
Rated Impedance: 8 ohms
Enclosure: Closed type, walnut finish with removable saran front grille
Dimensions: 376 (W) x 730 (H) x 275 (D) mm (14.8" x 28.7" x 27.5")
Weight: 22 kg (48.4 lbs)



SW-177

3-WAY 4-SPEAKER SYSTEM

Features: Acoustic lens, High and Midrange level controls, One-touch push-button speaker terminals
Maximum Input Power: 100 watts
Rated Input Power: 40 watts
Speakers: Woofer 30 cm x 1, Midrange 13 cm x 1, Tweeter 4.4 cm x 2
Sensitivity: 94 dB/Watt/m
Frequency Response: 25–20,000 Hz
Rated Impedance: 8 ohms
Enclosure: Closed type, walnut finish with removable saran front grille
Dimensions: 424 (W) x 670 (H) x 300 (D) mm (17.3" x 27.3" x 12.2")
Weight: 21 kg (46.3 lbs)



SW-157II

3-WAY 3-SPEAKER SYSTEM

Features: Acoustic lens, High and Midrange level controls, One-touch push-button speaker terminals
Maximum Input Power: 60 watts
Rated Input Power: 30 watts
Speakers: Woofer 30 cm x 1, Midrange 12 cm x 1, Tweeter 4.4 cm x 1
Sensitivity: 92 dB/Watt/m
Frequency Response: 30–20,000 Hz
Rated Impedance: 8 ohms
Enclosure: Bass reflex, walnut finish with removable saran front grille
Dimensions: 385 (W) x 660 (H) x 290 (D) mm (15.7" x 26.9" x 11.8")
Weight: 16.4 kg (36.1 lbs)



SW-137II

3-WAY 3-SPEAKER SYSTEM

Features: Acoustic lens, Midrange level control, One-touch push-button speaker terminals
Maximum Input Power: 40 watts
Rated Input Power: 20 watts
Speakers: Woofer 25 cm x 1, Midrange 12 cm x 1, Tweeter 4.4 cm x 1
Sensitivity: 92 dB/Watt/m
Frequency Response: 40–20,000 Hz
Rated Impedance: 8 ohms
Enclosure: Bass reflex, walnut finish with removable saran front grille
Dimensions: 330 (W) x 570 (H) x 290 (D) mm (13.5" x 23.3" x 11.8")
Weight: 11.7 kg (25.8 lbs)



SW-650S

3-WAY 3-SPEAKER SYSTEM

Features: Acoustic lens, High and Midrange level controls, One-touch push-button speaker terminals
Maximum Input Power: 70 watts
Rated Input Power: 40 watts
Speakers: Woofer 30 cm x 1, Midrange 12 cm x 1, Tweeter 4.4 cm x 1
Sensitivity: 92 dB/Watt/m
Frequency Response: 30–20,000 Hz
Rated Impedance: 8 ohms
Enclosure: Bass reflex, silver tone finish with removable saran front grille
Dimensions: 385 (W) x 660 (H) x 290 (D) mm (15.7" x 26.9" x 11.8")
Weight: 16.4 kg (36.1 lbs)



SW-350S

3-WAY 3-SPEAKER SYSTEM

Features: Acoustic lens, Midrange level control, One-touch push-button speaker terminals
Maximum Input Power: 50 watts
Rated Input Power: 30 watts
Speakers: Woofer 25 cm x 1, Midrange 12 cm x 1, Tweeter 4.4 cm x 1
Sensitivity: 92 dB/Watt/m
Frequency Response: 40–20,000 Hz
Rated Impedance: 8 ohms
Enclosure: Bass reflex, silver tone finish with removable saran front grille
Dimensions: 330 (W) x 570 (H) x 290 (D) mm (13.5" x 23.3" x 11.8")
Weight: 11.7 kg (25.8 lbs)



SW-127
2-WAY 2-SPEAKER SYSTEM
 Features: Acoustic lens, Distributed port system **Maximum Input Power:** 30 watts **Rated Input Power:** 15 watts **Speakers:** Woofer 20 cm x 1, Tweeter 4.4 cm x 1 **Sensitivity:** 92 dB/Watt/m **Frequency Response:** 40-20,000 Hz **Rated Impedance:** 8 ohms **Enclosure:** Bass reflex, walnut finish with removable saran front grille **Dimensions:** 300 (W) x 500 (H) x 220 (D) mm (12.2" x 20.4" x 9.0") **Weight:** 7.4 kg (16.4 lbs)



SR-1400
3-WAY 3-SPEAKER SYSTEM
 Features: Acoustic lens, One touch push-button speaker terminals **Maximum Input Power:** 100 watts **Rated Input Power:** 90 watts **Speakers:** Woofer 25 cm x 1, Midrange 10 cm x 1, Tweeter 4.4 cm x 1 **Sensitivity:** 89 dB **Frequency Response:** 30-20,000 Hz **Rated Impedance:** 8 ohms **Enclosure:** Closed type, Walnut finish (SR-1400), black (SR-1400BL), silver (SR-1400S) with removable saran front grille **Dimensions:** 320 (W) x 610 (H) x 265 (D) mm (12.6" x 24.0" x 10.4") **Weight:** 13.9 kg (30.6 lbs)



SW-117
2-WAY 2-SPEAKER SYSTEM
 Features: Acoustic lens, Distributed port system **Maximum Input Power:** 25 watts **Rated Input Power:** 15 watts **Speakers:** Woofer 16 cm x 1, Tweeter 4.4 cm x 1 **Sensitivity:** 89 dB/Watt/m **Frequency Response:** 50-20,000 Hz **Rated Impedance:** 8 ohms **Enclosure:** Bass reflex, walnut finish (SW-117), silver (SW-117S), black (SW-117BL) with removable saran front grille **Dimensions:** 260 (W) x 478 (H) x 184 (D) mm (10.2" x 18.8" x 7.2") **Weight:** 5 kg (11 lbs)



SW-7
2-WAY 2-SPEAKER SYSTEM
 Features: Mini size bookshelf type **Maximum Input Power:** 82 watts **Speakers:** Woofer 12.7 cm x 1, Tweeter 5 cm x 1 (Horn type) **Sound Pressure Level:** 92 dB/W/m **Frequency Response:** 55-22,000 Hz **Impedance:** 4 ohms **Enclosure:** Acoustic suspension type, black matt finish **Dimensions:** 138 (W) x 220 (H) x 125 (D) mm (5.3" x 8.6" x 4.8") **Weight:** 2.35 kg (5.3 lbs)



SR-1300
3-WAY 3-SPEAKER SYSTEM
 Features: Acoustic lens, One touch push-button speaker terminals **Maximum Input Power:** 60 watts **Rated Input Power:** 50 watts **Speakers:** Woofer 20 cm x 1, Midrange 7.6 cm x 1, Tweeter 4.4 cm x 1 **Sensitivity:** 89 dB **Frequency Response:** 40-20,000 Hz **Rated Impedance:** 8 ohms **Enclosure:** Closed type, walnut finish (SR-1300), black (SR-1300BL), silver (SR-1300S) with removable saran front grille **Dimensions:** 280 (W) x 547 (H) x 262 (D) mm (11.0" x 21.5" x 10.3") **Weight:** 9.82 kg (21.6 lbs)



SR-1200
2-WAY 2-SPEAKER SYSTEM
 Features: Acoustic lens, One touch push-button speaker terminals **Maximum Input Power:** 50 watts **Rated Input Power:** 40 watts **Speakers:** Woofer 20 cm x 1, Tweeter 4.4 cm x 1 **Sensitivity:** 88 dB **Frequency Response:** 45-20,000 Hz **Rated Impedance:** 8 ohms **Enclosure:** Closed type, Walnut finish (SR-1200), black (SR-1200BL), silver (SR-1200S) with removable saran front grille **Dimensions:** 260 (W) x 480 (H) x 257 (D) mm (10.2" x 18.9" x 10.1") **Weight:** 8.1 kg (17.8 lbs)



SR-1100
2-WAY 2-SPEAKER SYSTEM
 Features: Acoustic lens, One touch push-button speaker terminals **Maximum Input Power:** 40 watts **Rated Input Power:** 30 watts **Speakers:** Woofer 20 cm x 1, Tweeter 4.4 cm x 1 **Sensitivity:** 87 dB **Frequency Response:** 45-20,000 Hz **Rated Impedance:** 8 ohms **Enclosure:** Closed type, walnut finish (SR-1100), black (SR-1100BL), silver (SR-1100S) with removable saran front grille **Dimensions:** 260 (W) x 410 (H) x 235 (D) mm (10.2" x 16.1" x 9.2") **Weight:** 6.57 kg (14.5 lbs)

Pro-Series



PRO-400
AP-306C Direct Drive Quartz Lock Turntable **AM-2650** Stereo Integrated Amplifier **AT-2450** FM/AM Stereo Tuner **GXC-725D** 3-Head Stereo Cassette Deck **System Rack...** **RM-H400**
SR-1400 3-Way 3-Speaker or **SW-650S** 3-Way 3-Speaker Systems are recommended
 *Black panel model is also available.

PRO-300
AP-206C Direct Drive Turntable **AM-2450** Stereo Integrated Amplifier **AT-2450** FM/AM Stereo Tuner **GXC-706D** Stereo Cassette Deck **System Rack...** **RM-H300**
SR-1300 3-Way 3-Speaker or **SW-650S** 3-Way 3-Speaker Systems are recommended
 *Black panel model is also available.



PRO-200
AP-206C Direct Drive Turntable **AM-2350** Stereo Integrated Amplifier **AT-2250** FM/AM Stereo Tuner **GXC-704D** Stereo Cassette Deck **System Rack...** **RM-H100**
SR-1200 2-Way 2-Speaker or **SW-350S** 3-Way 3-Speaker Systems are recommended
 *Black panel model is also available.

PRO-100
AP-100C Auto Return Turntable **AM-2250** Stereo Integrated Amplifier **AT-2250** FM/AM Stereo Tuner **CS-703D** Stereo Cassette Deck **System Rack...** **RM-H100**
SR-1100 2-Way 2-Speaker or **SW-350S** 3-Way 3-Speaker Systems are recommended
 *Black panel model is also available.

Models	AKAI Models DIMENSION COMPARISON			
	300mm	400mm	500mm	700mm
PS-Series				
PS-200M/120M				440mm
PS-200C				
PS-300T				
Stereo Integrated Amplifiers				
AM-2950				440mm
AM-2850				
AM-2650				
AM-2450				
AM-2350				
AM-2250				
FM/AM Stereo Tuners				
AT-S08				440mm
AT-2650				
AT-2450				
AT-2250			390mm	
FM/AM Stereo Receivers				
AA-1200				480mm
AA-1150				
AA-1125				
Turntables				
AP-307				440mm
AP-207				
AP-820/C				
AP-810/C				
AP-100/C				
Stereo Cassette Decks				
GXC-570DII				440mm
GX-F90				
GX-F90				
GX-M50				
GX-M30				
GXC-750D				440mm
GXC-725D				
GXC-716D				
GXC-709D				
GXC-706D				
GXC-704D			390mm	
CS-703D				440mm
GXC-706DX				
Quick Reverse Cassette Decks				
GXC-736D				440mm
CS-732D				
10-1/2" Open Reel Tape Decks				
GX-650D				440mm
GX-636D/DB				
GX-630D/DB				
GX-620				
7" Open Reel Tape Decks				
GX-266II				440mm
GX-265				
GX-215D			380mm	440mm
GX-4000D/DB			358mm	440mm
1722II				
Cartridge Tape Deck				
CR-83D				420mm
Radio Cassette Recorders				
AJ-900				500mm
AJ-490				440mm
AJ-360			363mm	
HIFI Music Centers & HIFI Compacts				
AC-3750S/L				707mm
AC-3400S/L				

* For improvement purpose, specifications and design are subject to change without notice.

MANUFACTURED & DISTRIBUTED BY
AKAI ELECTRIC CO., LTD.

12-14, 2-chome, Higashi-Kojiya,
 Ohta-ku, Tokyo, Japan