



La Stèle Sub Bass Triphonic

TRIPHONIC[®] 100



teller
Michael Otto
Classic.de

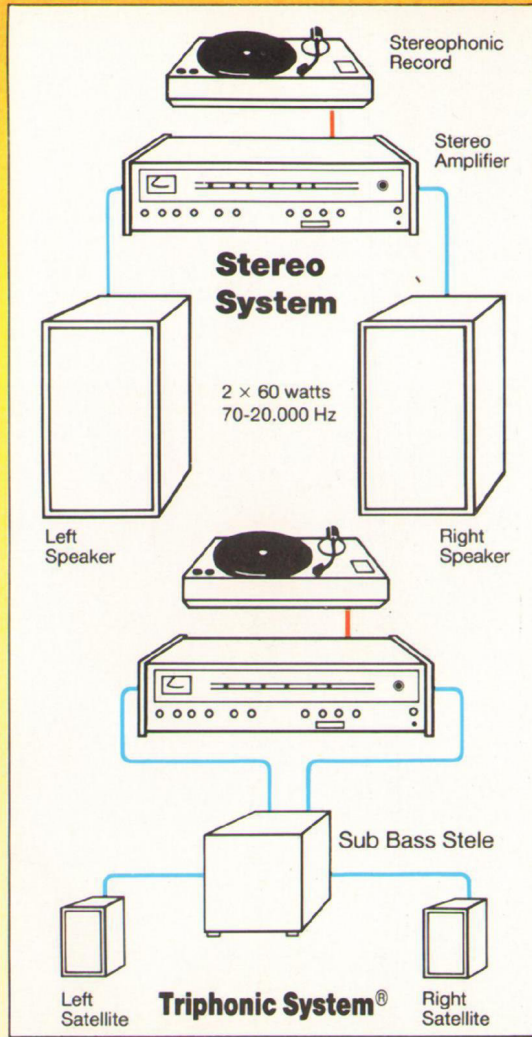
© beim Hersteller
Archiv Michael Otto
HIFI-Classic.de

LOOK

THE SUB BASS "TRIPHONIC STELE"

This acoustic system enables speakers to be blended in with living room decor without the slightest compromise to technical perfection, because sound reproduction is unbeatable up to 30 Hz, the lowest audible frequencies. Equivalent reproduction would normally need two speakers taking up a cubic meter each !!! The principle is that of building the bass speakers into a decorative stele. Given the weakness of stereophonic perceptibility above 150 Hz, the mixing of right and left channels in the one cabinet has no adverse effect. Obviously, the mid and high ranges are not mixed, in order to preserve the stereophony, and the separation of the two channels is identical to that of a traditional stereo system.

The **Sub Bass Triphonic Stele** can be integrated with any existing stereo system. Compatibility is guaranteed. The Sub Bass can be sold separately to give your present installation the deep bass ranges: disconnect your present speakers, connect the stele to your amplifier, connect the speakers to the stele and... listen. Last but not least, if you place the stele with the satellites 1.20 to 1.50 meters apart, your system will be perfectly in phase including the extreme bass... something no traditional speaker can offer.



THE SUB BASS "TRIPHONIC STELE"

- DEEP BASS STELE EASILY BLENDING WITH YOUR DECOR

- MAXIMUM POWER 300 W

- MINIATURE MULTI-POSITION SATELLITES

- Plexiglass wall brackets
- Suspended
- On legs
- On shelf or bookcase
- On mantelpiece
- In wall niche

- INCREDIBLY SIMPLE TO INSTALL, NO ADJUSTMENT NECESSARY

- THE "SUB BASS" STELE CAN BE USED WITH ANY "MIDI" HI-FI SYSTEM TO ADD BASS AND VERY LOW BASS

3A Audio design reserve the right to modify the above specifications without notice, with the sole aim of improving its products.

9 EXAMPLES OF HARMONIUS DECORATION PLUS THE 10



LISTEN

Reflections on the best of reflected sound

With a small speaker and good 2 way coupling, power response in a normally reverberant room (typical living room) remains constant up to 10 KHz, whether the speaker be facing the listener (fig. 5), at 45° (fig. 6) or turned to face the walls (fig. 7).

Besides, it is common knowledge that direct sound is only perceived very close to the speaker. At distance over 1 meter, only reflected sound matters (fig. 8), whatever the position of the emitting source.



ATOM 100
height 22 cm
width 13 cm

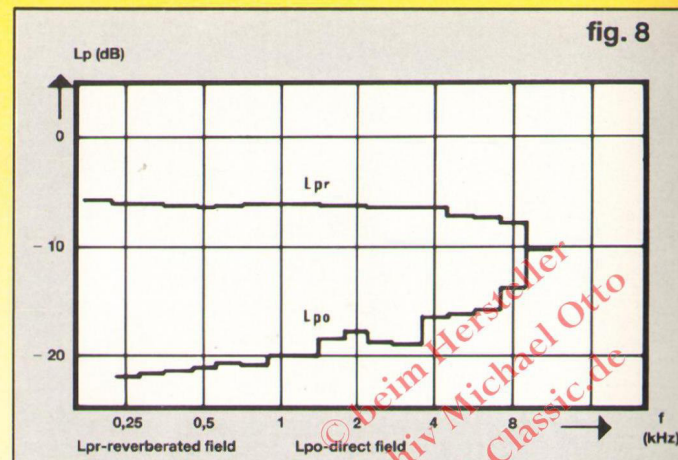
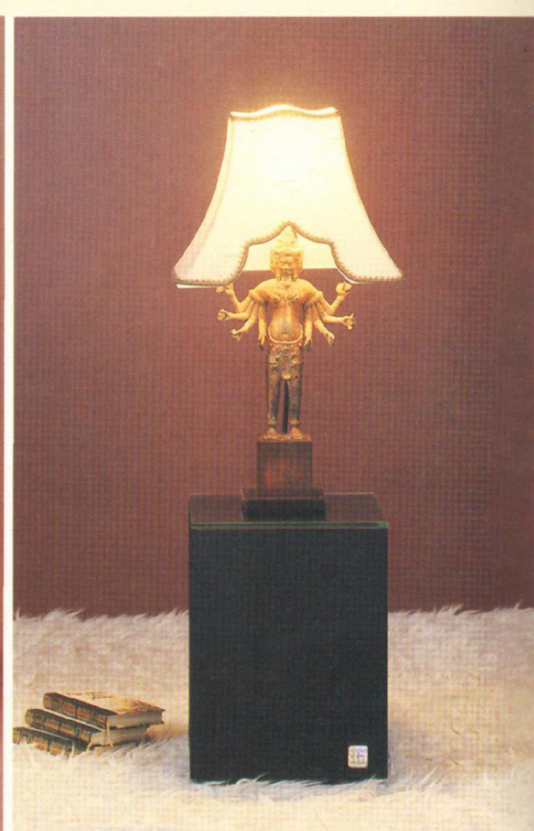
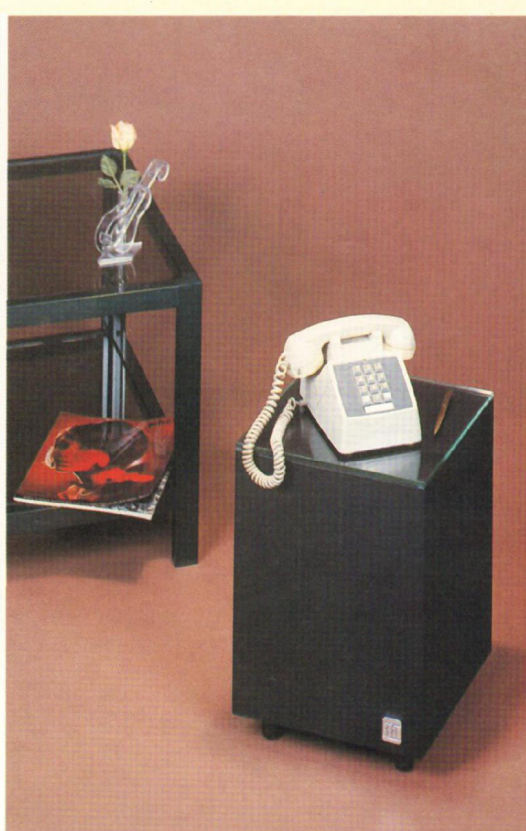


fig. 8

Relative importance of direct and reverberated fields according to frequency.

The essential conclusion to be drawn from this graph is that, up to about 8 KHz, the reverberated field is preponderant; it is therefore imperative up to this frequency, to use the power response curve.

th.... CAMOUFLAGE

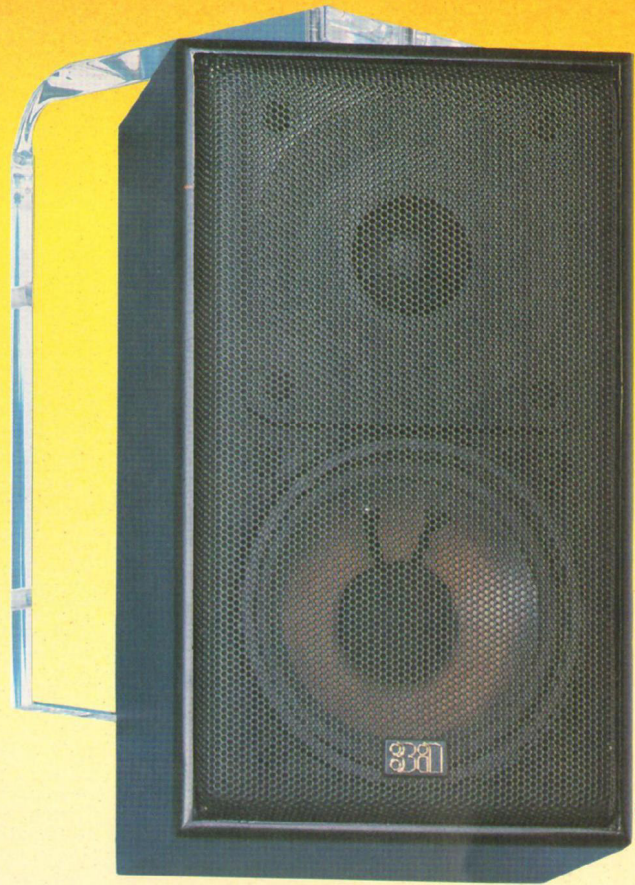
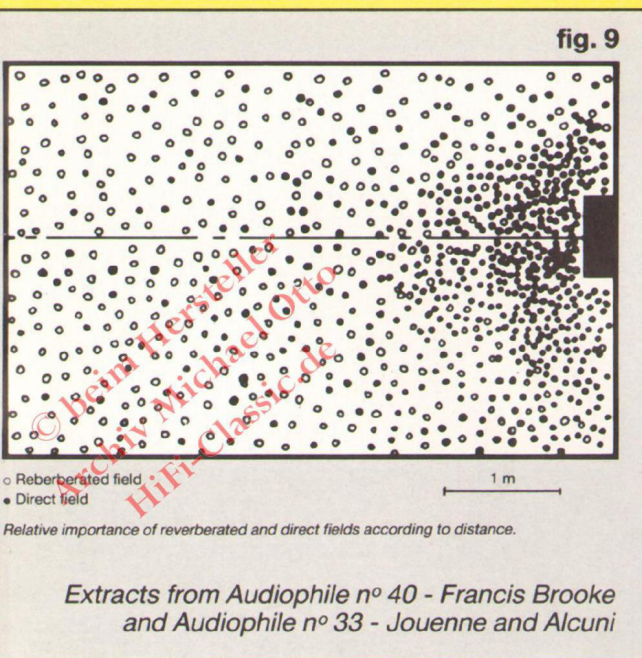


BELIEVE

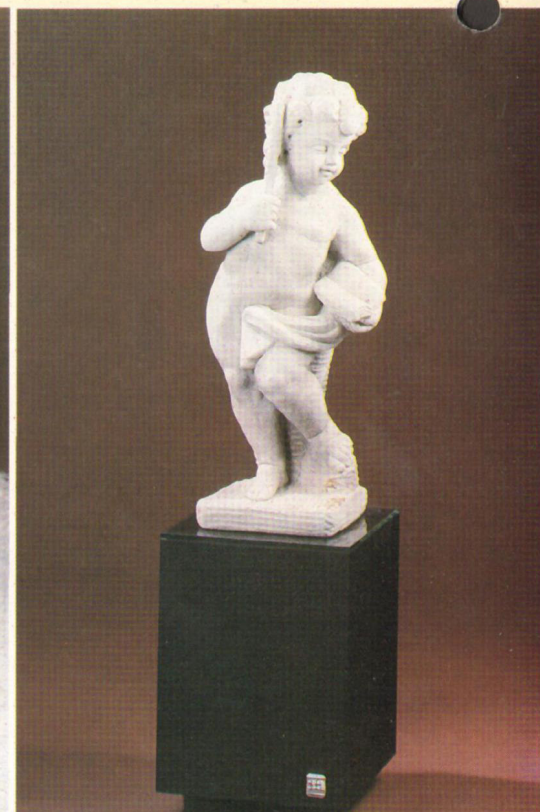
Francis Brook in Audiophile
N° 40 remarked...

In the figure 8, the reverberated field is 10 times
more powerful than the direct field up to 8 KHz.
This means in effect, that **only reverberated
sound is perceived**.

In figure 9 it can be seen that under 1 meter away
from the speaker, direct sound (black dots) is
preponderant. 2,3 or 4 meters away, only indirect
sound is present... and yet, the speaker is on the
wall face to face with the listener !!!
It's worth a thought...



**ATOM 100
wall hanging**



3A PATENTED PUSH PULL ACOUSTIC COUPLING SYSTEM

SUB BASS STELE

Each channel comes through a 8 inch. high power woofer (150 W). Both booms are set in a symetrically damped speaker.

The maximum power in the bass is 300 W.

There is:

No electrical connection between the 2 channels

No risk of overloading

No possibility of short circuiting between the 2 channels.

If one of the channels is connected out of phase, (inverted or badly connected).

No diaphony linked to an active or passive addioner.

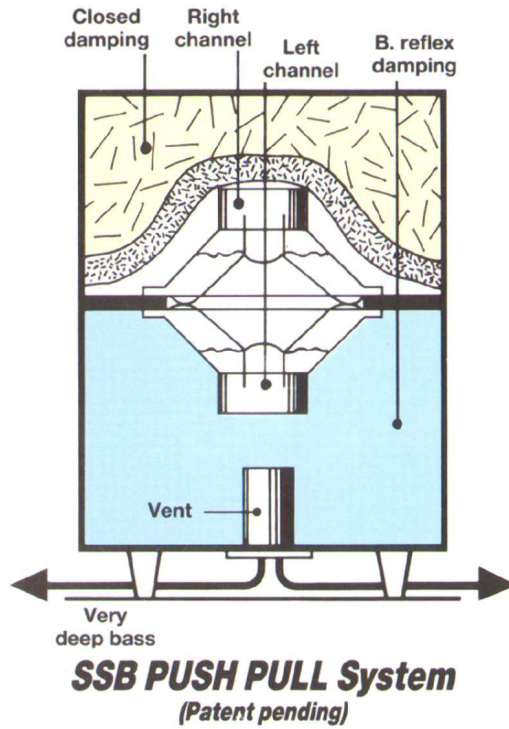
No distortion in the very low bass.

The 2 loudspeakers work on a push-pull system - one advances while the other goes back. There is total compensation of non linearities.

Dimensions in cms:

30 x 30 height 38 + legs.

Can be "disguised" in a room, used as a "table" for lamps, telephone, ashtrays, ornaments, vase, plants, etc...



ATOM 100 SATELLITES

- High power ferrofluid dome tweeter
- 10 cm high definition polypropylene midrange
- Thick high density inert wooden cabinet
- Dimension: 13 cm, W, 22 cm, H, 10 cm, D.

Specification of the TR 100 system

- 3 way triphonic system
- Efficient power 100 Watts/channel
- Maximum power 150 Watts/channel
- use with power amplifiers from 30 to 120 Watts.

The system is delivered with plexiglass brackets for satellites, and 8 mm thickness glass cover for Sub Bass.

Response curve:

Bass speaker: 50 Hz-150 Hz at -3 dB
Whole system: 40-25000 Hz CEI.

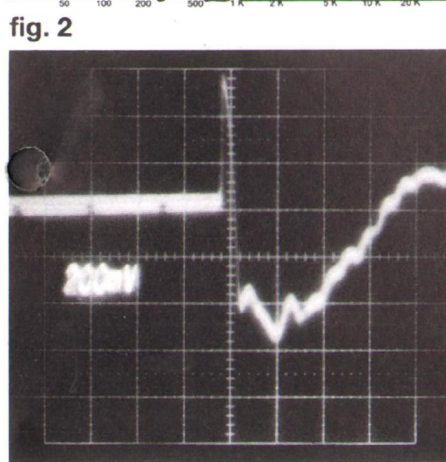
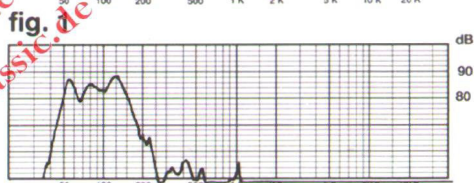
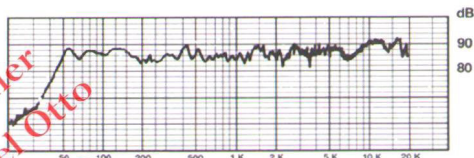


fig. 3

TESTING THE SYSTEM

Fig. 1: Response curve of complete system in anechoic chamber (1 w - 1 m)

Thanks to the elaborate filter in the medium bass, there is no weakening in this register when compared to the control, a top quality speaker. The neighborhood of resonance of the midrange speaker is protected.

The response is totally linear from 40 Hz to 25 KHz.

Fig. 2: Response of SSB alone

A truly amazing level of bass with almost nil distortion.

Fig. 3: Impulsion response of Atom 100 satellite (100 μs by division)

Almost perfect response.

Raised time shorter than 20 μs !!

Fig. 4: Response curve of system in auditorium (30 m² semi reverberant)

The bass comes out stronger than in the anechoic chamber. The highs are slightly subdued by reflection.

Figs 5, 6, 7: Reflection on the best of reflected sound...

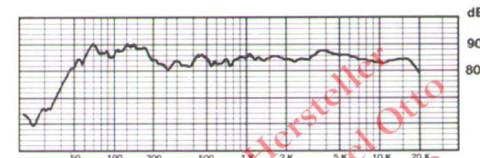


fig. 4

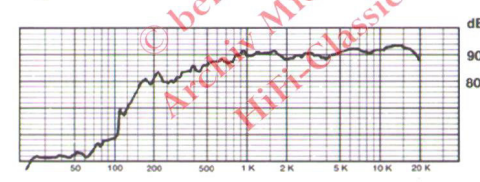


fig. 5 Anechoic response on axis (A)

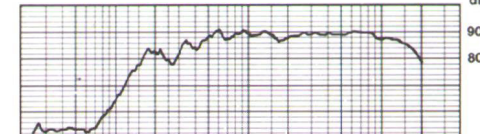


fig. 6 Anechoic response with 45° satellite deviation (B)

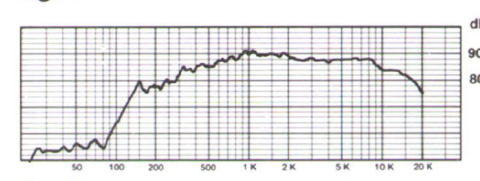
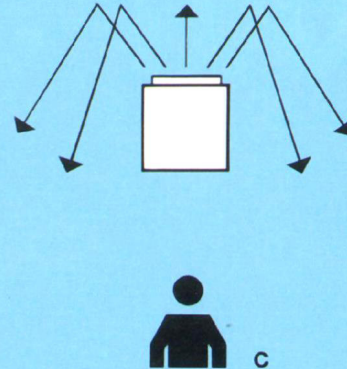
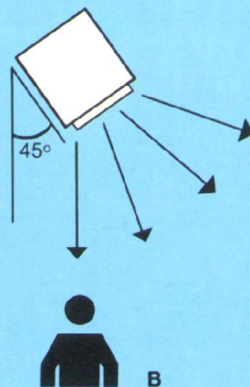
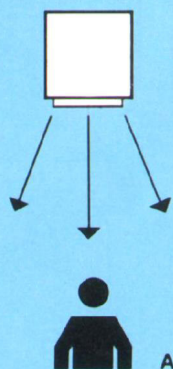


fig. 7 Anechoic response with satellite facing wall (C)





© beim Hersteller
Archiv Michael Otto
HiFi-Classic.de

© beim Hersteller
Archiv Michael Otto
HiFi-Classic.de

“SUB BASS TRIPHONIC”[®] STELE

100 W - R M S

150 W MAXIMUM

- *NON DIRECTIONAL BASS SPEAKER*
- *CAN BE PLACED ANYWHERE IN THE ROOM*
- *CAN BE CONNECTED TO ANY SATELLITES...*
(Midi systems, miniature speakers),
... TO ADD VERY LOW BASS,
(satellite filters built into stele)

“C’est génial”

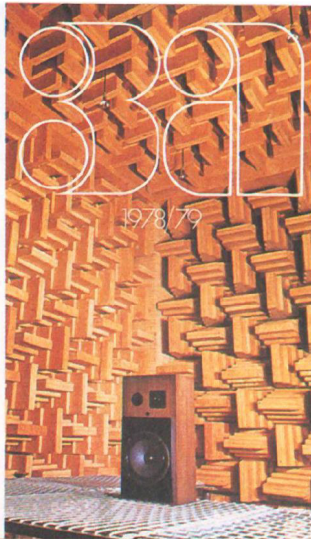


steller
Michael Otto
Classic.de

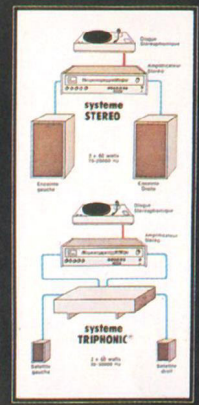
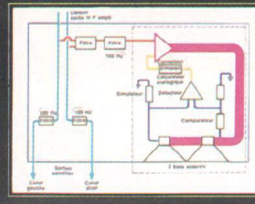
© beim Hersteller
Archiv Michael Otto
HiFi-Classic.de

IN 1978

3A WAS ALREADY 10 YEARS AHEAD OF ITS PRESENT COMPETITORS



- La table «Sub base Triphonic» peut être incorporée dans tous les systèmes stéréophoniques existants sans aucune incompatibilité (garantie).
- L'asservissement en pression (APF 1.1) de 2 haut-parleurs basses permet la réduction du volume acoustique et l'intégration dans une table basse de haute décoration.
- L'asservissement de la voie grave centrale vous reproduit enfin l'extrême grave sans distorsion et au même niveau acoustique que les autres fréquences (30 Hz à 3 dB).
- La phase est totalement respectée car il n'existe aucun effet stéréo au dessous de 150 Hz. Il a été choisi pour votre confort aussi 100 Hz de fréquence de transition.
- Les deux satellites «Atom 2 et Atom 3» respectent totalement les phases acoustiques - décalages spatiaux des 2 ou 3 haut-parleurs, (HP connectés en phase).
- Le sub bass peut être vendu seul pour donner des basses et de l'extrême grave à votre installation actuelle: débranchez vos enceintes actuelles, connectez la table à votre ampli stéréo. Rebranchez les enceintes sur la table, et écoutez.



La TRIPHONIC est un canal additionnel ajouté à votre installation stéréophonique.

les caissons-basses (Sub-bass)

Triphonic® 800 80 watts

- 30 Hz - 150 Hz ± 3 dB
- 2 basses Ø 28 cm, asservies en pression
- Amplificateur intégré de 120 watts
- Dimensions: table basse d'angle 150 x 600
- Poids: 10 kg (avec câble de liaison vers l'amplificateur)

Triphonic® 1000 100 watts

- 30 Hz - 150 Hz ± 3 dB
- 2 basses Ø 28 cm, asservies en pression
- Amplificateur intégré de 120 watts
- Dimensions: table basse de salon 170 x 680
- Poids: 10 kg (avec câble de liaison vers l'amplificateur)

les satellites

Tous les enceintes traditionnelles peuvent être utilisées en satellites de façon à renforcer la réponse dans toutes les gammes de son. Cependant nous avons conçu spécialement des satellites ATOM 2 (2 voies) et ATOM 3 (3 voies) pour constituer l'installation au TRIPHONIC par une meilleure intégration des diverses gammes que la réduction de volume obtenue.

Atom 2

- Deux voies - 50 watts
- 150 Hz - 20.000 Hz ± 3 dB
- Médium à cône et aigu à coupé
- Impédance de charge 16 Ohm

Atom 3

- Trois voies - 80 watts
- 150 Hz - 20.000 Hz ± 3 dB
- Médium à cône et aigu à coupé Ø 13 cm
- Haut médium HP à cône Ø 50 mm
- Aigu - cône Ø 13 mm
- Impédance de charge 16 Ohm

le système complet

- Triphonic® 802 (800 + 2 Atom 2)
- Triphonic® 803 (800 + 2 Atom 3)
- Triphonic® 1002 (1000 + 2 Atom 2)
- Triphonic® 1003 (1000 + 2 Atom 3)

Brevet 3A TRIPHONIQUE

1977 - n° 7711085'

TRIPHONIE marque déposée 3A

TRIPHONIQUE marque déposée 3A

TRIPHONIC® U.S. Registered Trade Mark

Extract from 3A catalogue
1978/79

3A AUDIO DESIGN
Z.I. ANTIBES
06600
Tél. 93.33.24.01 +
Télex 470 060 F

L'AVANCE TECHNOLOGIQUE