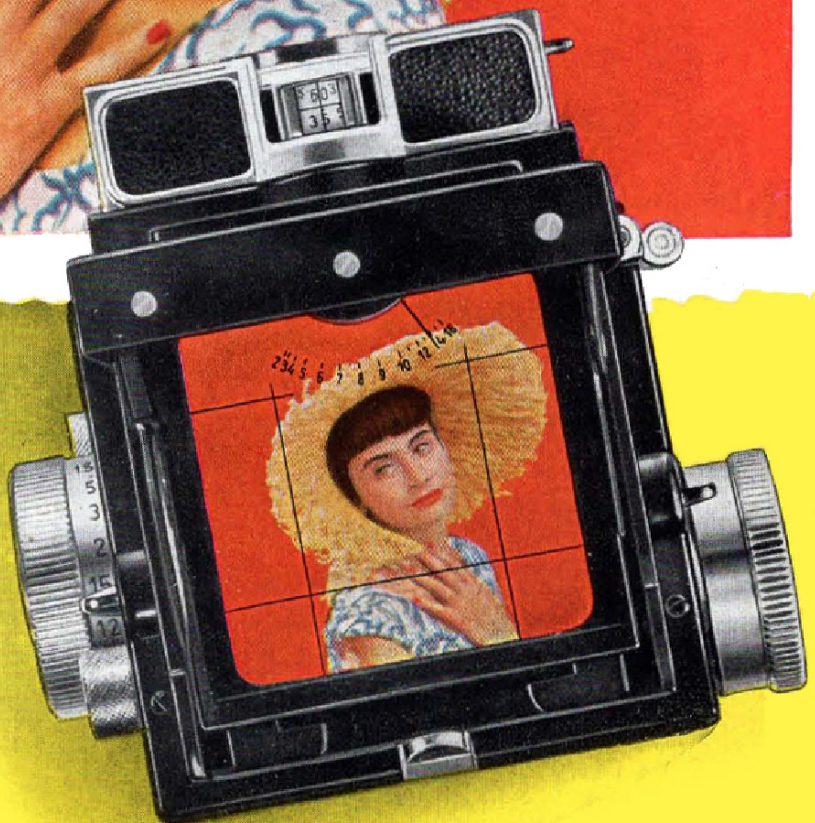


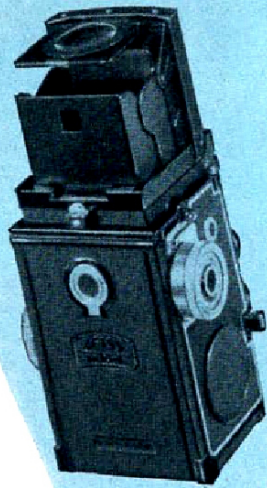
ZEISS
IKON

2 1/4 x 2 1/4 IKOFLEX

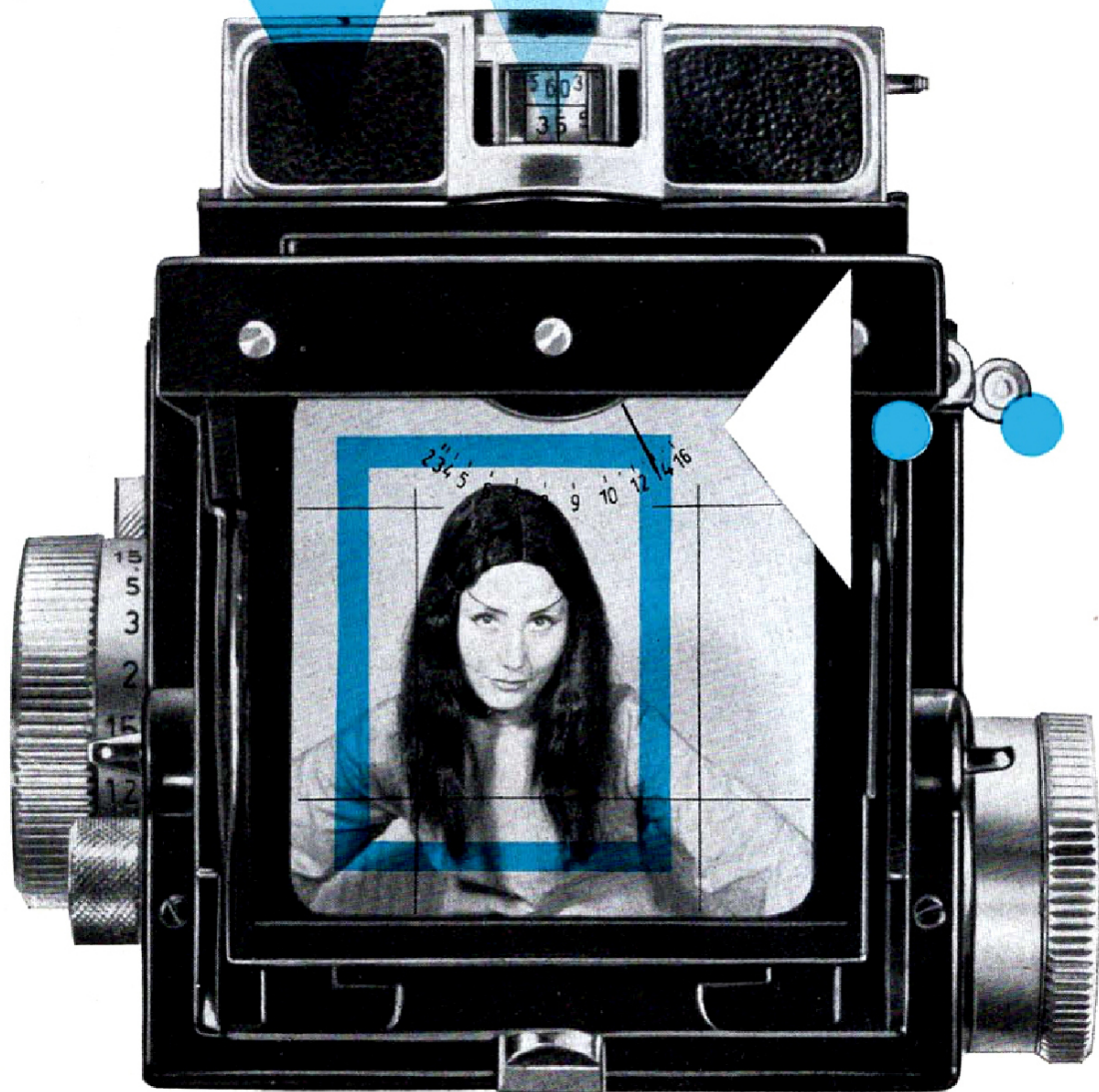


and
Ikoflex Favorit

A Lot Depends on the Photographer



However attractive the subject, only an action shot will make a good picture. The Ikonflex shows you how the subject will look in the picture, before you press the button. You can judge in advance just how much of the view you cover, the proper composition, and whether you are holding the camera straight. In the finder you see a full-size image, evenly brilliant right into the corners.



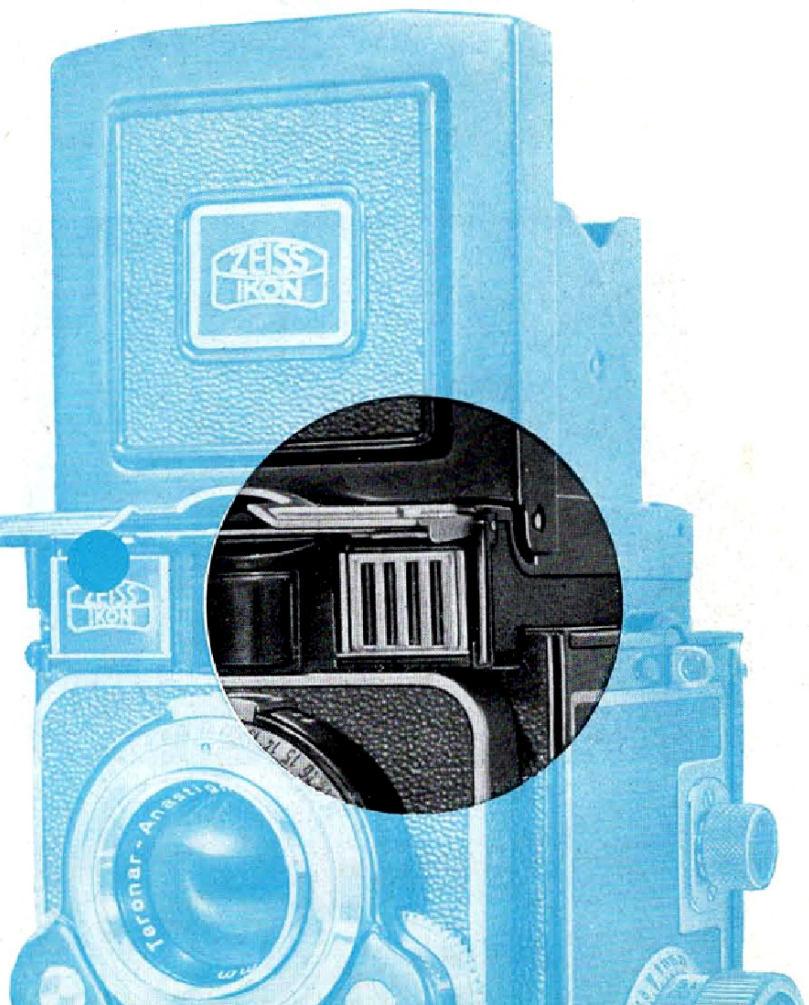
ZEISS
IKON

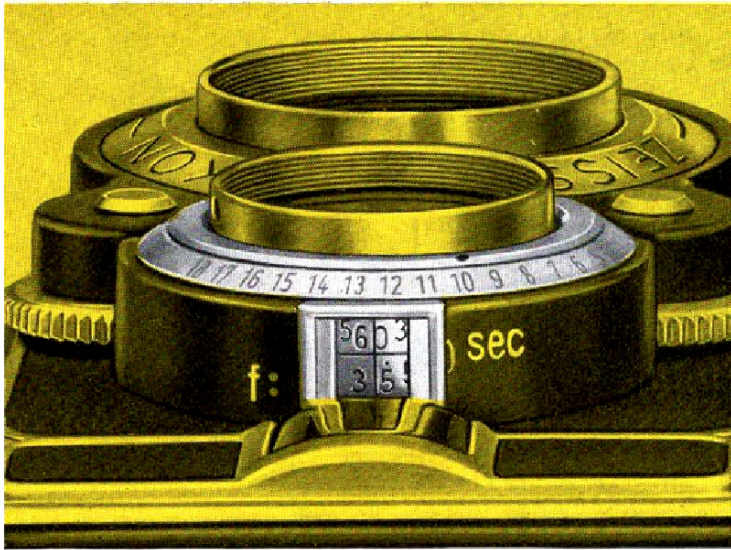
The powerfully brilliant finder image, produced by the Fresnel-type field lens combined with the ground glass screen, is an important feature of all Ikonflex models. The finder of this 2¼ x 2¼-inch twin-lens reflex camera shows, however, not only a view of the subject; it exactly indicates also the sharpness of the image, and the reading of the built-in Zeiss Ikon photo-electric exposure meter. At a glance into the viewfinder hood you see everything you need for a successful picture. The smooth movement of the handy focusing knob on the left-hand side of the Ikonflex virtually snaps the image into sharpness. At the same time the taking lens is automatically focused at the correct distance. To assist in judging the definition, a hinged magnifier lens is provided; this is interchangeable for near-or far-sighted users. A scale at the focusing knob, easily visible from above, also indicates the depth of field at any aperture.

While you watch the finder image, the pointer of the exposure meter shows every change in lighting conditions. The meter itself is an integral part of the camera body, and is well protected against shocks. Even in poor light it will still yield reliable readings for black-and-white and colour film. It has been developed by Zeiss Ikon over more than twenty years, and tested under all climatic conditions all over the world.

The finder has other points worth knowing: you can open and close the hood with one movement. You can also fold the front panel inwards, to convert it into an eye-level frame finder—a useful feature for sports photography.

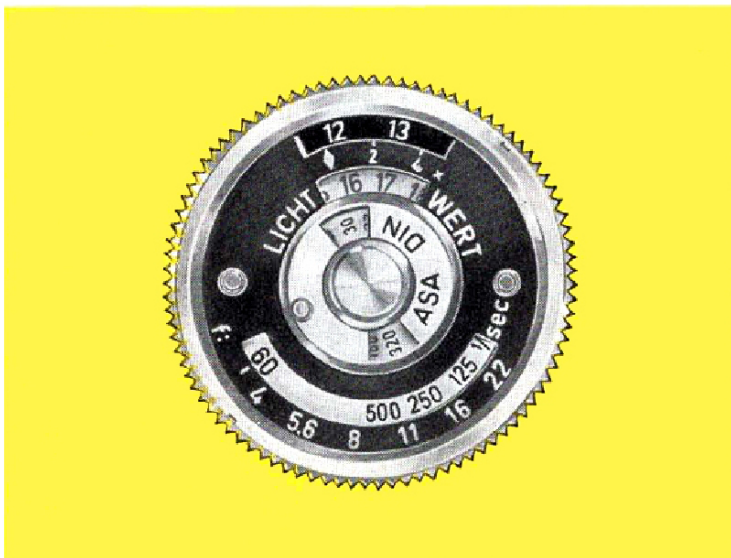
The Photo-Electric Exposure Meter





Speed

is important for successful action shots. The controls are therefore handy and clearly arranged. In the Ikoflex Favorit all scales are visible from above (see top illustration). All three models carry the shutter release on the side of the body for convenient and shake-free exposure. The lever folds back and locks to prevent accidental releasing. The focusing knob incorporates the calculator for the exposure meter (centre illustration). ASA and DIN film speed scales are provided. The corresponding shutter speed can be read off for each aperture, and vice versa. A filter compensator eliminates calculations even when using colour filters. The Ikoflex Favorit in addition indicates exposure values.



Next to speed,

Certainty

of operation is important. The film transport of the Ikoflex cameras is therefore automatic: after exposure you simply turn the transport knob until it locks, without worrying about any red window. The film counter advances at the same time; the system makes double exposures and blank frames impossible. A film indicator in the transport knob (bottom illustration) acts as a useful memory aid. The Ikoflex yields 12 album-size pictures, $2\frac{1}{4}$ inches square, on each roll of No. 120 film.





Catalog No. 887/16 Lcms

Ikoflex *favorit*

The Ikoflex Favorit is the most advanced model of the Zeiss Ikon range of twin-lens reflex cameras. The taking lens is the world-famous 75-mm Tessar f/3.5, of unsurpassed pin-sharp definition. Its high speed and outstanding colour correction make it specially suitable for colour photography. The Synchro-Compur-MXV shutter provides speeds from 1 to $1/500$ second and time exposures of any duration. It has a built-in self-timer and is synchronized for all types of flash. Apertures and shutter speeds are coupled by the exposure-value setting. An additional lock prevents blank frames with long-time exposures. If desired, apertures and shutter speeds can, of course, also be set separately. The exposure meter shows the appropriate settings for both methods of working. The film transport permits even automatic loading. After inserting the film and closing the back, you simply turn the knob until it locks; the film counter then indicates "No. 1", and the camera is ready for action, for the transport is also coupled to the shutter winding mechanism. You can therefore devote your attention to the subject. The Ikoflex Favorit is truly a camera for photographic masterpieces.

Ikoflex Ic

This model also incorporates the Zeiss Ikon photo-electric exposure meter with its pointer visible inside the focusing hood.

The shutter is the Prontor-SVS with speeds from 1 to $\frac{1}{3000}$ second and long-time exposures. It includes a self-timer and is fully synchronized for flash. Apertures and shutter speeds can be read off from the front in magnifying peep-windows. The camera is available with the 75-mm Novar anastigmat f/3.5 (Catalog No. 886/16 Fpms), or with the famous 75-mm Zeiss Tessar f/3.5.

Catalog No. 886/16 Lpms



Ikoflex Ib

This twin-lens reflex camera has the same-features as the Ikoflex Ic, except for the exposure meter. It thus represents particularly good value for the money. For colour photography you can always buy a Zeiss Ikon Ikophot Rapid photo-electric exposure meter later on. This is illustrated on the last page of this brochure. The Ikoflex Ib is fitted with the well-known 75-mm Novar anastigmat f/3.5.

Catalog No. 856/16 Fpms



Ikoprox

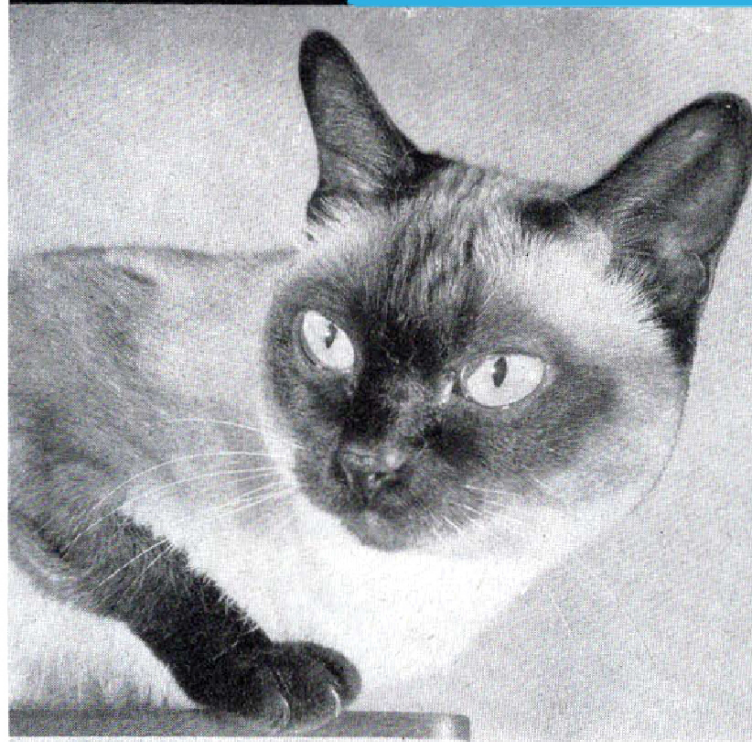
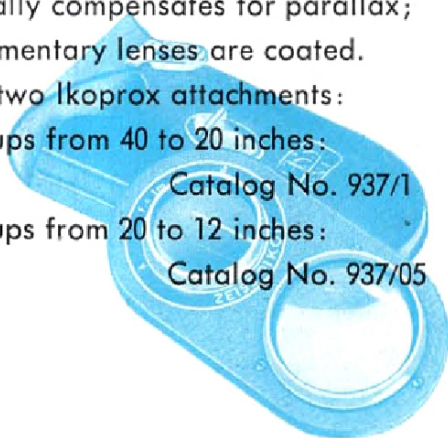
Close-up subjects make interesting pictures. Their attraction lies in the unusually large view of small objects. The Ikoprox close-up attachment makes such pictures very easy to take. You simply fit it over both lenses, and then focus and arrange the picture in the normal way on the ground glass screen. The attachment automatically compensates for parallax; the supplementary lenses are coated.

There are two Ikoprox attachments:
For close-ups from 40 to 20 inches:

Catalog No. 937/1

For close-ups from 20 to 12 inches:

Catalog No. 937/05



This is a polarizing filter unit which shows the effect on the viewing screen. It can be used for black-and-white and colour shots, and subdues or eliminates disturbing reflections from spectacle lenses, windows, smooth water, ice, polished furniture, and other non-metallic reflecting surfaces. Under certain circumstances it also reduces the blue cast in landscapes taken on colour film, and thus yields a more realistic colour rendering. In addition, the Ikopol can darken blue skies to produce dramatic thunderstorm effects.

Catalog No. 337

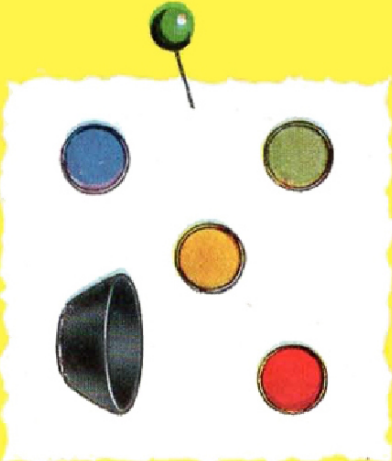
Ikopol



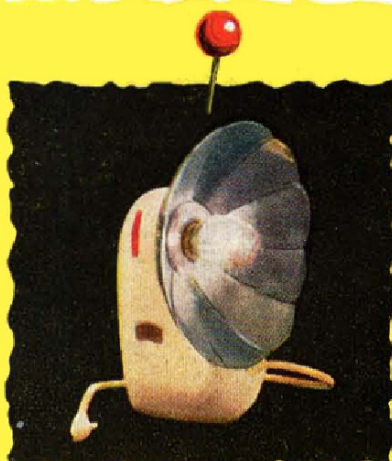


Accessories

The **ever-ready case** protects the camera at all times:
For Ikoflex Ib Catalog No. 1245/16
For Ikoflex Ic Catalog No. 1249/16
For Ikoflex Favorit Catalog No. 1250/16



Zeiss Ikon precision filters are available in seven colours: yellow, yellow-green, orange, red, UV, Ikolor B (blue), and Ikolor A (Ikolor filters not suitable for Kodak and Ansco colour films)



Catalog No. 371
Lens hood for against-the-light shots and in bad weather (can also be screwed into a filter)
Catalog No. 1121
Leather case for lens hood
Catalog No. 780

Supplied by:



The Ikoflex is made, in their Goerz Works, West-Berlin, by



For flash shots the following efficient capacitor flash guns are available:
folding-Ikoblitz, takes up no more room than a soap box when collapsed
Catalog No. 1318
Leather case for above
Catalog No. 730

Ikoblitz 0 with case
Catalog No. 1316

Ikophot Rapid exposure meter (for use with Ikoflex Ib)
Catalog No. 1329

Cable release, locking
Catalog No. 1312/24
Neck strap with lock Tr. 500

ZEISS IKON AG. STUTTGART