

ZEISS IKON

Contaflex

New Model:

Contaflex super **BC**



LENS ANGLE METER ANGLE



Angular Field = Meter Angle

An exposure system perfect by any light

Precisely the light falling on the film through the interchangeable lens you happen to be using is measured by the modern cadmium sulfide exposure meter of the new CONTAFLEX super BC. But ZEISS IKON's designers have added still another attribute to this metering system: the measuring range is so large that even the mere glow of a match is enough for the recording of exact exposure values, and automatically at that. This means greater perfection and less bother with exposures than ever before.

Every critical amateur looking for an ideal camera for his hobby and profession will enthusiastically welcome this decisive advantage in the CONTAFLEX, the world's most famous single-lens reflex camera. The mirror reflex system affords great advantages because the viewfinder shows exactly the picture recorded by the film. This is just as true in the case of interchangeable lenses as it is for close-ups, which can be made even larger than life with the CONTAFLEX.



Contaflex

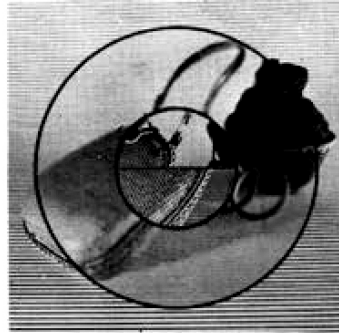
... more than a camera

Whatever model you choose - every CONTAFLEX is more than a camera! It is the heart of the universal CONTAFLEX system, the applications of which are described in detail on the fold-outs of this brochure.

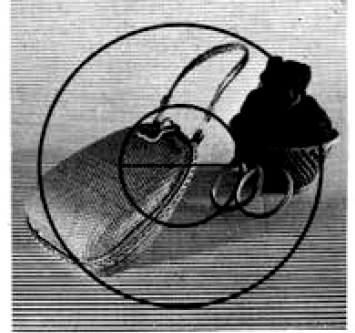
Two rangefinders for dependable focusing

In all CONTAFLEX models a very happy solution has been found for the focusing problem - two complementary special systems: a split-image rangefinder and a ground glass ring. You always have the right rangefinder for every subject. In every case - even for shots with interchangeable lenses and close-up attachments - with the CONTAFLEX a glance and brief finger-tip adjustment are enough to focus reliably and exactly.

unsharp



sharp



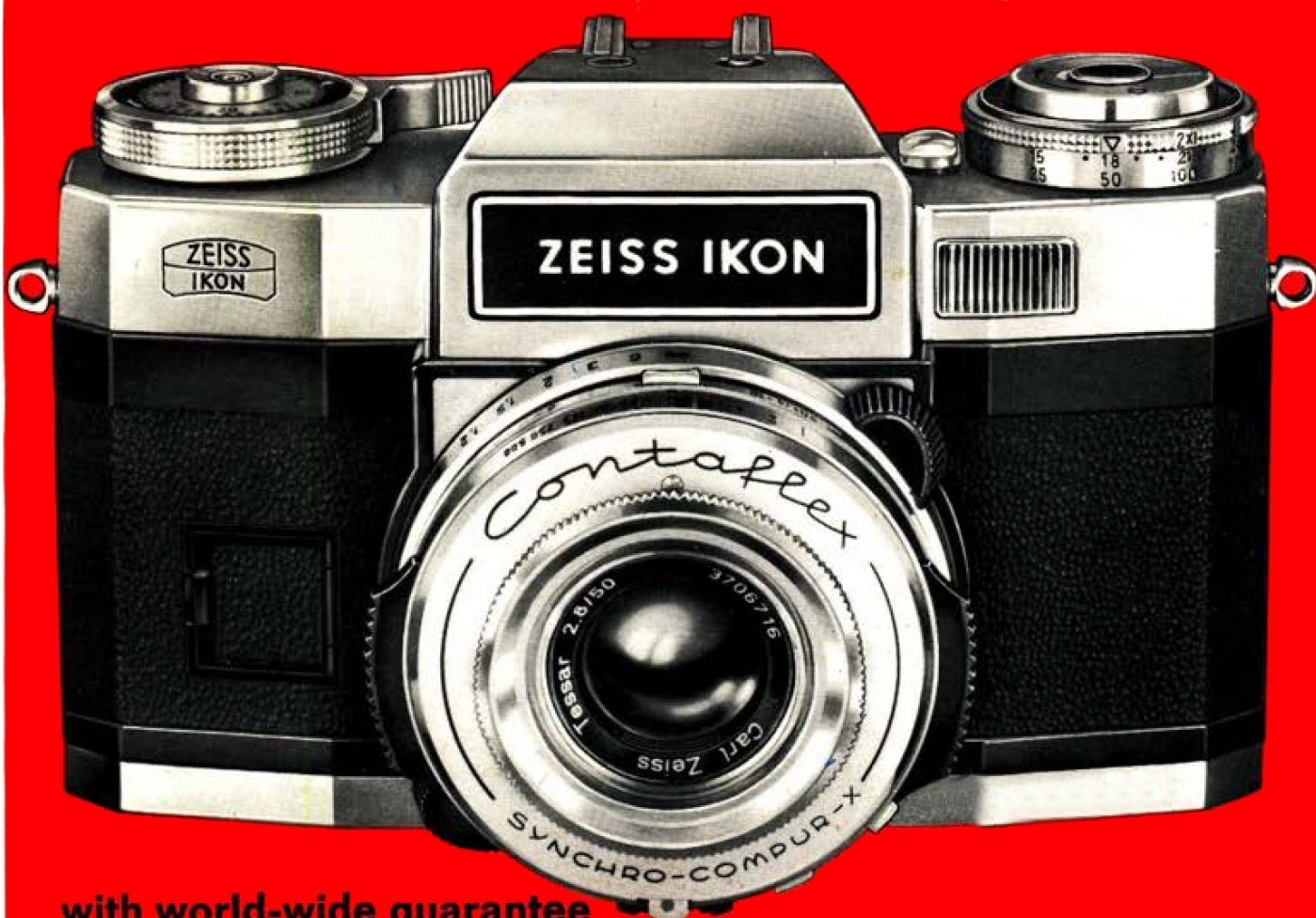
The most modern model of the world-famous CONTAFLEX line

The new CONTAFLEX super BC is an extraordinary camera. It combines all the time-tested benefits of the single-lens reflex principle with the advantages of modern through-the-lens CdS exposure measurement. It is very easy to handle. Even difficult shots are sure to succeed. The outstanding optical equipment ensures brilliant photos, whether black-and-white or coloured. The CONTAFLEX super BC will fully satisfy even the hypercritical.

Technical data of the CONTAFLEX super BC:

Outstanding optical system - the world-famous "eagle-eye" 50 mm ZEISS TESSAR f/2.8 · CdS exposure meter behind the lens, can be read in the finder and on top of the camera · fully automatic exposure control with override · filter, dull weather and backlight corrector · automatic flash control · command panel in the finder for all settings · rapid wind with double-exposure lock · rewind crank · film type indicator · film counter ·

Contaflex super BC



with world-wide guarantee

Fully Automatic Exposure and Automatic Flash Control

SYNCHRO-COMPUR shutter, 1 to 1/500 sec. · self-timer · surefire cordless flash contact · mount for interchangeable magazine backs · bayonet mount for interchangeable lenses · facilities for mounting on copying attachments and microscopes.

It is so simple to photograph with the CONTAFLEX super BC: preselect shutter speed, focus, trip the shutter. The correct aperture is set automatically. For special effects the automatic controls can be overridden.

And for flash? The automatic flash control saves complicated figuring. For flash shots, too, the right f = stop is set automatically.

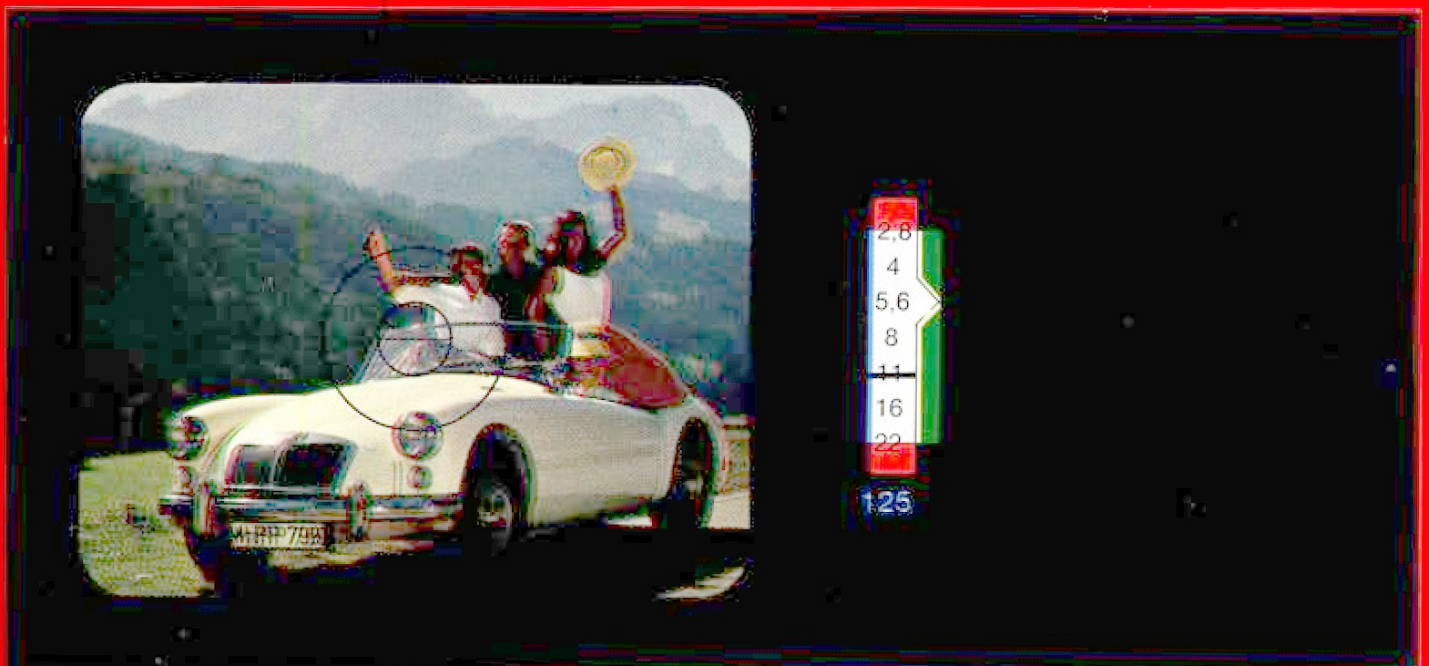
Anybody can learn the simple handling rules in seconds.

Viewfinder with Command Panel

The finder image of every CONTAFLEX – uninverted, radiantly bright right out to the corners, needle-sharp, almost life-size and – even with interchangeable lenses and close-up attachments – parallaxfree.

Framing? Image sharpness? F = stop and shutter speed? Too much or too little light? Automatic or manual?

Camera ready for shooting? All this can be seen at a glance in the viewfinder of the CONTAFLEX super BC with its command panel.



The CONTAFLEX system paves the

**ZEISS interchangeable lenses
open up for the CONTAFLEX
a vast photographic field**

The ZEISS PRO-TESSAR lenses have bayonet mounts. Interchanging is a matter of seconds. It is an important advantage of the CONTAFLEX that camera operation always remains the same. The comparative pictures clearly illustrate how much lovelier some subjects can be made with lenses of different focal lengths. In each case the upper picture was taken with the standard lens and

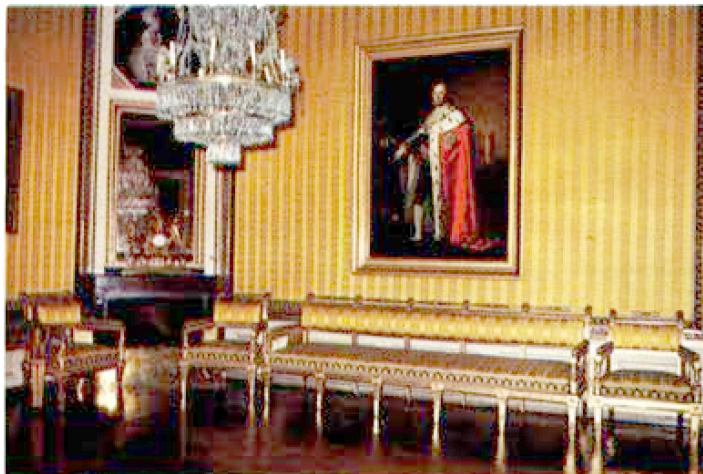
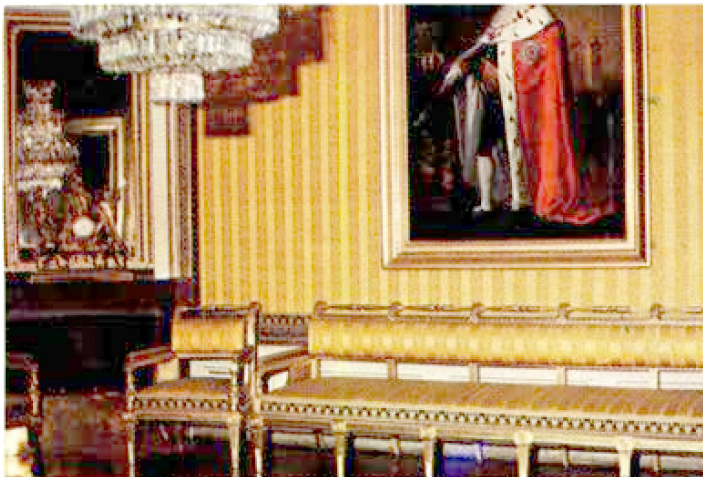
1

ZEISS PRO-TESSAR
f/3.2, 35 mm
Angular field 60°



2

ZEISS PRO-TESSAR
f/3.2, 85 mm
Angular field 28°



way to new photographic horizons

the lower one with a more effective focal length.

1 The 35 mm wide-angle ZEISS PRO-TESSAR f/3.2 is a big help when the standard lens fails to cover the full subject. Owing to its great depth of field, it is also excellent for candid series.

2 The 85 mm ZEISS PRO-TESSAR f/3.2 brings distant subjects close to the camera.

3 With the 115 mm ZEISS PRO-TESSAR f/4 the telephoto effect is even greater.

4 The ZEISS Monocular 8 x 30 B pulls far-distant subjects in almost to arm's length. It eats up ground in leaps and bounds. It pushes the focal length up to a full 400 mm. The handy ZEISS monocular is also a practical pocket field glass.

3

ZEISS PRO-TESSAR
f/4, 115 mm
Angular field 21 °



4

ZEISS Monocular
8 x 30 B
Angular field 6 °



All the advantages of the reflex system

The CONTAFLEX super, despite its lower price, is also a top-quality single-lens reflex camera with all the fine features of the CONTAFLEX system. The correct exposure values are determined with the built-in photoelectric exposure meter. It is coupled with the shutter-speed and aperture setting rings. Its needle can be observed on top of the camera and in the finder while framing the subject. This guarantees that every shot is correctly exposed. The CONTAFLEX super is fitted with the same out-

standing lens as the superlative super BC – the world-famous ZEISS TESSAR, which always gives brilliant, needle-sharp pictures in black-and-white and colour.

Technical data of the CONTAFLEX super:

50 mm ZEISS TESSAR f/2.8 lens, the world-famous "eagle-eye" · Coupled exposure meter can be read in the finder and on top of the camera · filter, dull weather and backlight corrector · dual cou-

Contaflex super



with world-wide guarantee

pled rangefinders · rapid wind with double-exposure lock · rewind crank · film type indicator · film counter · SYNCHRO-COMPUR shutter, 1 to 1/500 sec. · selftimer · sure-fire cordless flash contact · mount for interchangeable magazine backs · bayonet mount for interchangeable lenses · facilities for mounting on copying attachments and microscopes.



All settings at a glance

In the radiantly bright reflex viewfinder the CONTAFLEX super has indicator marks for filter, dullweather and backlit exposures alongside the needle of the exposure meter. This enables exactly the right exposure values to be set even under unusual and difficult light conditions. The two rangefinder images for focusing are in the middle of the finder.



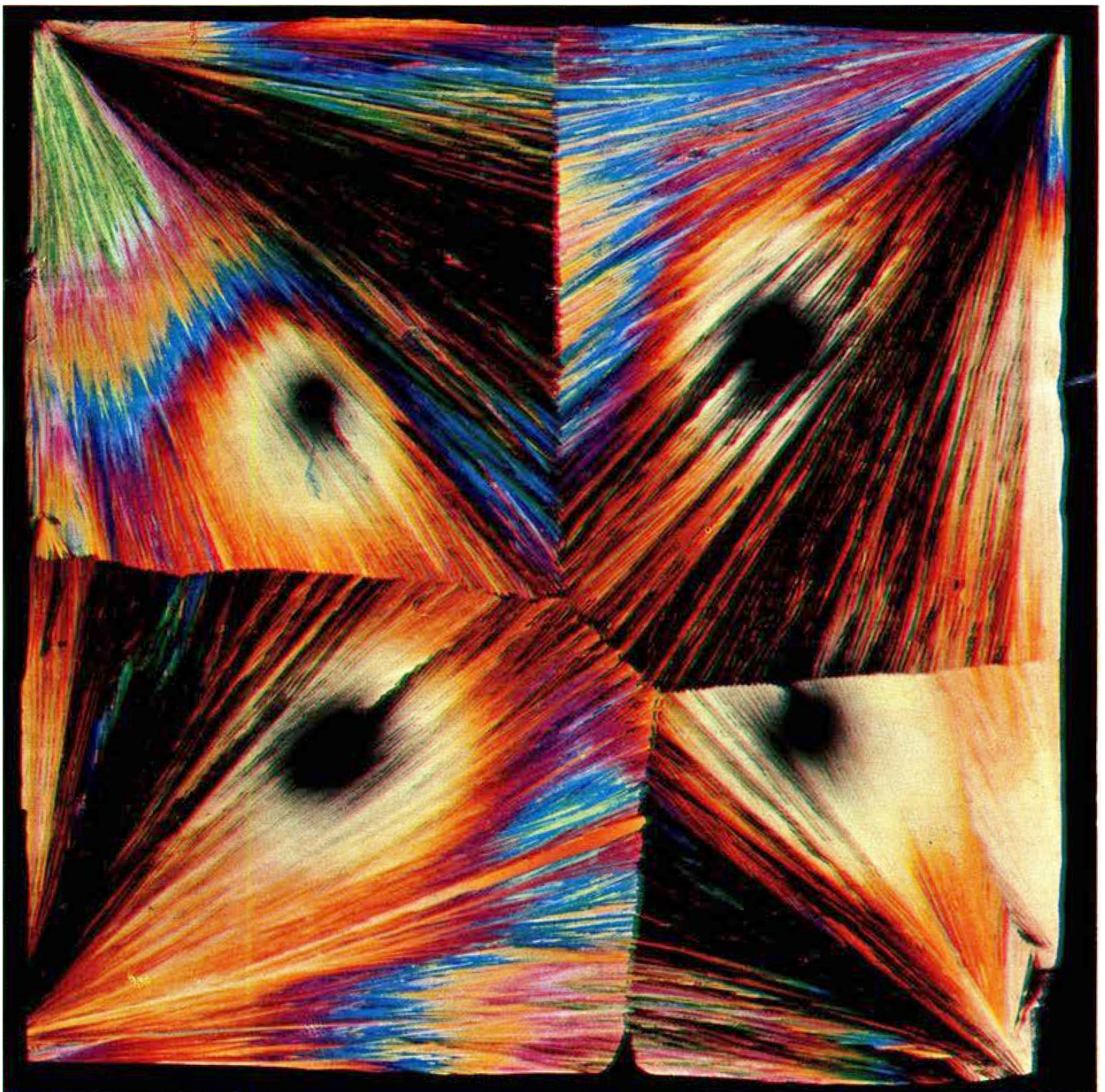
The special-purpose camera for exceptional applications

The optical brilliance, technical precision and easy handling of the CONTAFLEX make it an ideal camera for special applications. There is a **table copying stand** for accurate copying work. Stamps, coins and larger objects can be conveniently photographed with it. The additional **lighting set** provides uniform illumination. The CONTAFLEX also opens up the fascinating field of photomicrography in the simplest possible manner. Two low-priced adapter rings are all that is needed to

mount your CONTAFLEX ready for action on any conventional microscope.

The new **REPROPHOT Universal Copying Stand** was designed especially for single-lens reflex cameras. It permits photography of copy ranging from $8\frac{1}{4} \times 11\frac{3}{4}$ in. down to a scale of 1:1. The REPROPHOT also enables duplicate slides and internegatives to be made very easily. The REPROPHOT can be easily folded up for convenient transport.

The **right-angle viewer** for the viewfinder simpli-



Photomicrograph of a Salol crystal

Accessories for copying and photomicrography

fies observation of the subject when using a copying stand or microscope. It is also very handy for framing inaccessible subjects and worm's eye views.

With just a few accessories the CONTAFLEX is a versatile, special-purpose camera for professional work, spare-time and experimental photography, and for every conceivable special application.



CONTAFLEX
on microscope



REPROPHOT

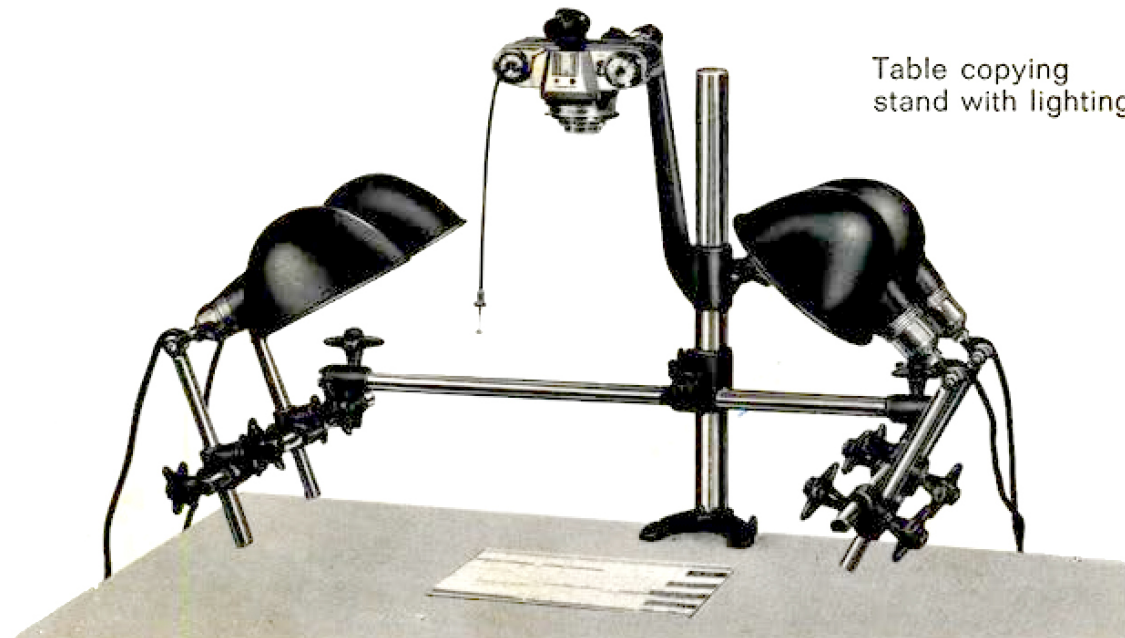


Table copying
stand with lighting set

We will be glad to advise you at any time.

	Cat. No.
CONTAFLEX super BC with ZEISS TESSAR f/2.8, 50 mm	10.1273
CONTAFLEX super with ZEISS TESSAR f/2.8, 50 mm	10.1262

Accessories for all CONTAFLEX models

Eveready, case, real leather	23.0007
Universal case, real leather	23.0206
Interchangeable magazine back	20.0302
Case for 1 interchangeable magazine back ...	20.7855
Case for 2 interchangeable magazine backs ..	23.0201
Filters G-GR-O-R-UV, Ikolor-B, -C and -F, 27 mm diam.	20.1000
1 filter set (G-GR-O-UV), 27 mm diam., with case	20.7071
Sun shade (rubber), 27 mm diam.	20.0713
ZEISS PROXAR lenses, A 28.5 mm diam. for ranges down to 15½, 11, 8½ and 6½ ins.	20.0800-03
ZEISS DOUBLE PROXAR lens, S 27 mm diam., down to 3½ in.	20.0804
1 ZEISS PROXAR lens set with depth-of-field calculator and case	20.7070
CONTAPOL polarizing filter, S 27 mm diam.	20.1200
REPROPHOT universal copying stand	20.1853
Table copying stand	20.1850
Lighting set for above	20.1852
Adapter ring for micro attachment	20.1620
Attachment head for micro attachment	20.1616
Right-angle viewer	20.1614
Cassette with spool and case	20.0300

**ZEISS interchangeable lenses and accessories for
CONTAFLEX super and super BC**

PRO-TESSAR f/3.2, 35 mm, with case	11.1201
PRO-TESSAR f/3.2, 85 mm, with case	11.1202
PRO-TESSAR f/4, 115 mm, with case	11.1205
PRO-TESSAR M 1:1, with leather case	11.1204
ZEISS Monocular 8 x 30 B (f=400 mm)	20.1629
Filters for 35 and 85 mm PRO-TESSARS, S 60 mm diam. G-GR-O-R-UV, Ikolor-C, -F	20.1009
Filters for 115 mm PRO-TESSAR, G-UV, Ikolor-C, S 67 mm diam.	20.1017
Supplementary lens for 85 mm PRO-TESSAR, f=1.3 m, S 60 mm diam.	20.0841
Supplementary lens for 115 mm PRO-TESSAR, f=2 m, S 67 mm diam.	20.0842
Adapter ring for using S 67 mm diam. filters on 35 and 85 mm PRO-TESSAR, S 60 mm diam.	20.1643
Sun shade (rubber) for 35 and 85 mm PRO-TESSAR, S 60 mm diam.	20.0716

	Cat. No.
Sun shade for 115 mm PRO-TESSAR, S 67 mm diam.	20.0714
Leather case for 1 PRO-TESSAR and 1 filter ..	23.1001
Leather case for 2 PRO-TESSARS, 2 filters and sun shades	23.1201
Case for ZEISS Monocular	23.1203
Lens case for 3 PRO-TESSARS, 1 interchangeable magazine back and 3 filters	23.0202

Flash Units

IKOBLITZ LD with case	22.0011
IKOBLITZ 6 with tilting reflector	22.0008
IKOBLITZ M: 1 loading - 4 flashes	22.0014
IKOTRON C 1, electronic combination flash	22.0103
IKOTRON S 2 electronic flash unit	22.0102

Also supplementary lenses for ZEISS Monocular,
leathers cases for filters and sun shades, lens caps,
correction lenses for defective eyesight, eyepiece
cups, cable releases etc. on request.

ZEISS IKON