

ZEISS
IKON



Taken with the Contax

Zeiss Tessar $f/3.5$ 2" focal length, $1/50$ th second
at $f/5.6$: Zeiss Ikon Panchrom film.

Guaranteed . . .

is nowadays sometimes an overworked word. With cameras and other scientific instruments, the most satisfactory guarantee is that based on the reputation of the manufacturer, and it need hardly be added that the Zeiss Ikon trade mark on an instrument is itself an assurance of first-class design and construction. With Zeiss Ikon cameras over £10 in value, or fitted with Compur shutters, there is available to the purchaser, on application, a Zeiss Ikon official written three-year guarantee, and guarantee application cards, giving full particulars, are included with every camera to which this guarantee is applicable. No other guarantee is provided.

Shutters fitted to Zeiss Ikon Cameras

Shutter Type.	Time.		Automatic exposures Seconds.
	Long.	Short.	
Box Tengor	—	B	$\frac{1}{25}$.
Automat	T	B	$\frac{1}{25}$ and $\frac{1}{75}$.
Automat S.	T	B	$\frac{1}{25}$ and $\frac{1}{75}$ with delayed-action release.
Derval	T	B	$\frac{1}{25}$, $\frac{1}{50}$, and $\frac{1}{100}$.
Telma	T	B	$\frac{1}{25}$, $\frac{1}{50}$, $\frac{1}{100}$ and $\frac{1}{125}$ with delayed-action release.
Klio OO	T	B	1, $\frac{1}{2}$, $\frac{1}{5}$, $\frac{1}{10}$, $\frac{1}{25}$, $\frac{1}{50}$, $\frac{1}{100}$ and $\frac{1}{175}$ with delayed-action release.
Klio O	T	B	1, $\frac{1}{2}$, $\frac{1}{5}$, $\frac{1}{10}$, $\frac{1}{25}$, $\frac{1}{50}$, $\frac{1}{100}$ and $\frac{1}{150}$ with delayed-action release.
Compur OO	T	B	1, $\frac{1}{2}$, $\frac{1}{5}$, $\frac{1}{10}$, $\frac{1}{25}$, $\frac{1}{50}$, $\frac{1}{100}$ and $\frac{1}{300}$.
Compur OOR	T	B	1, $\frac{1}{2}$, $\frac{1}{5}$, $\frac{1}{10}$, $\frac{1}{25}$, $\frac{1}{50}$, $\frac{1}{100}$, $\frac{1}{250}$ and $\frac{1}{500}$.
Compur OS	T	B	1, $\frac{1}{2}$, $\frac{1}{5}$, $\frac{1}{10}$, $\frac{1}{25}$, $\frac{1}{50}$, $\frac{1}{100}$ and $\frac{1}{250}$ with delayed-action release.
Compur OSR	T	B	1, $\frac{1}{2}$, $\frac{1}{5}$, $\frac{1}{10}$, $\frac{1}{25}$, $\frac{1}{50}$, $\frac{1}{100}$, $\frac{1}{200}$ and $\frac{1}{400}$ with delayed-action release.
Focal-plane shutter ...	—	B	Super Nettel and Nettax, $\frac{1}{5}$, $\frac{1}{10}$, $\frac{1}{25}$, $\frac{1}{50}$, $\frac{1}{100}$, $\frac{1}{200}$, $\frac{1}{500}$ and $\frac{1}{1000}$. Contaflex, $\frac{1}{2}$, $\frac{1}{5}$, $\frac{1}{10}$, $\frac{1}{25}$, $\frac{1}{50}$, $\frac{1}{100}$, $\frac{1}{200}$, $\frac{1}{500}$ and $\frac{1}{1000}$. Contax II and III, $\frac{1}{2}$, $\frac{1}{5}$, $\frac{1}{10}$, $\frac{1}{25}$, $\frac{1}{50}$, $\frac{1}{125}$, $\frac{1}{250}$, $\frac{1}{500}$ and $\frac{1}{1250}$. Contax II and III and Contaflex possess a built-in delayed-action release, which also can be operated to give one second exposure.
A special form of wire release is provided without extra cost to give long time exposures with cameras fitted with double exposure prevention device.			

All prices are current from 1st April, 1939, and are subject to alteration without notice.



Box Tengor . . .

The Box Tengor is the aristocrat of box cameras. It is made in three sizes, for $1\frac{5}{8}'' \times 1\frac{1}{4}''$, $2\frac{1}{4}'' \times 1\frac{3}{4}''$, and $3\frac{1}{4}'' \times 2\frac{1}{4}''$ pictures.

A special de luxe pattern (Model II) is also available, which incorporates a device to prevent unintentional double exposures. With this camera (illustrated on right), even if one forgets to wind on the film it is impossible to release the shutter, and a signal shows whether the film has been wound on.

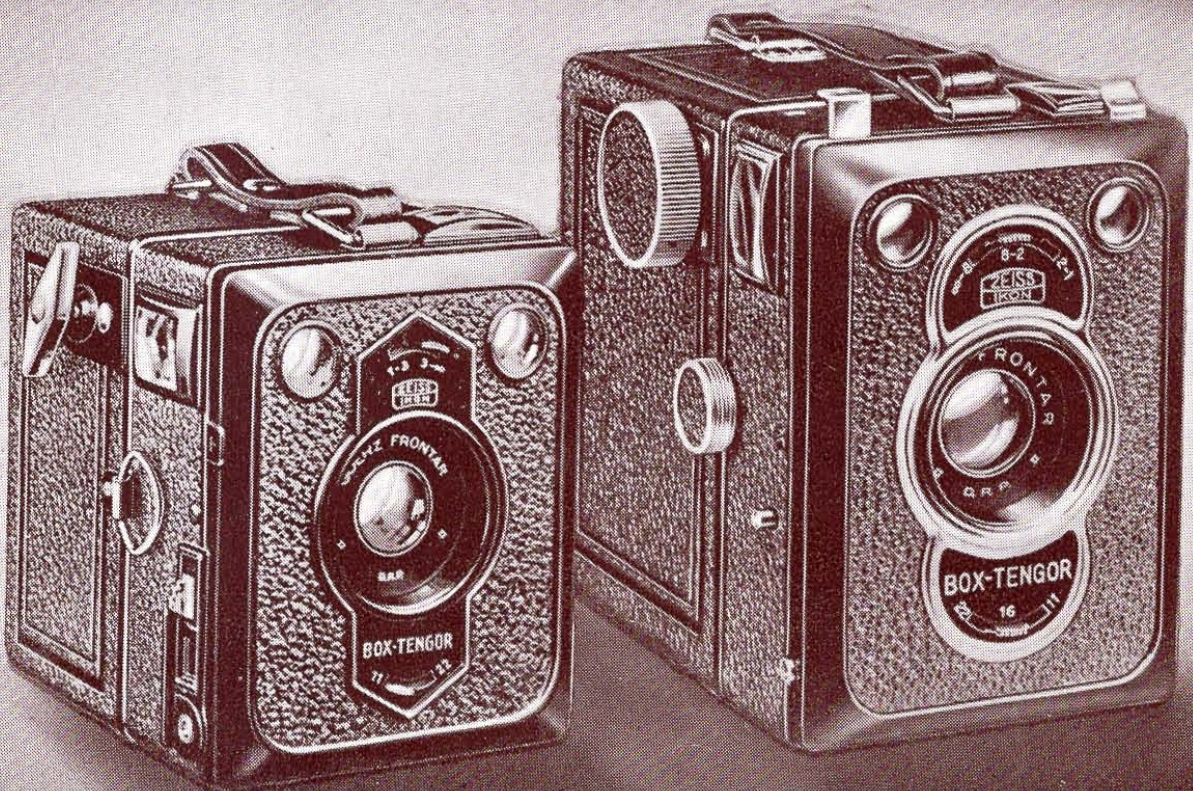
The Frontar lens $f/11$ gives sharp pictures of all subjects over approximately 20 feet from the camera, and built in supplementary lenses are provided for closer distances. The shutter gives snapshot exposures of $1/25$ th second, or time exposures of any duration, and is provided with a locking device which prevents it being operated accidentally.

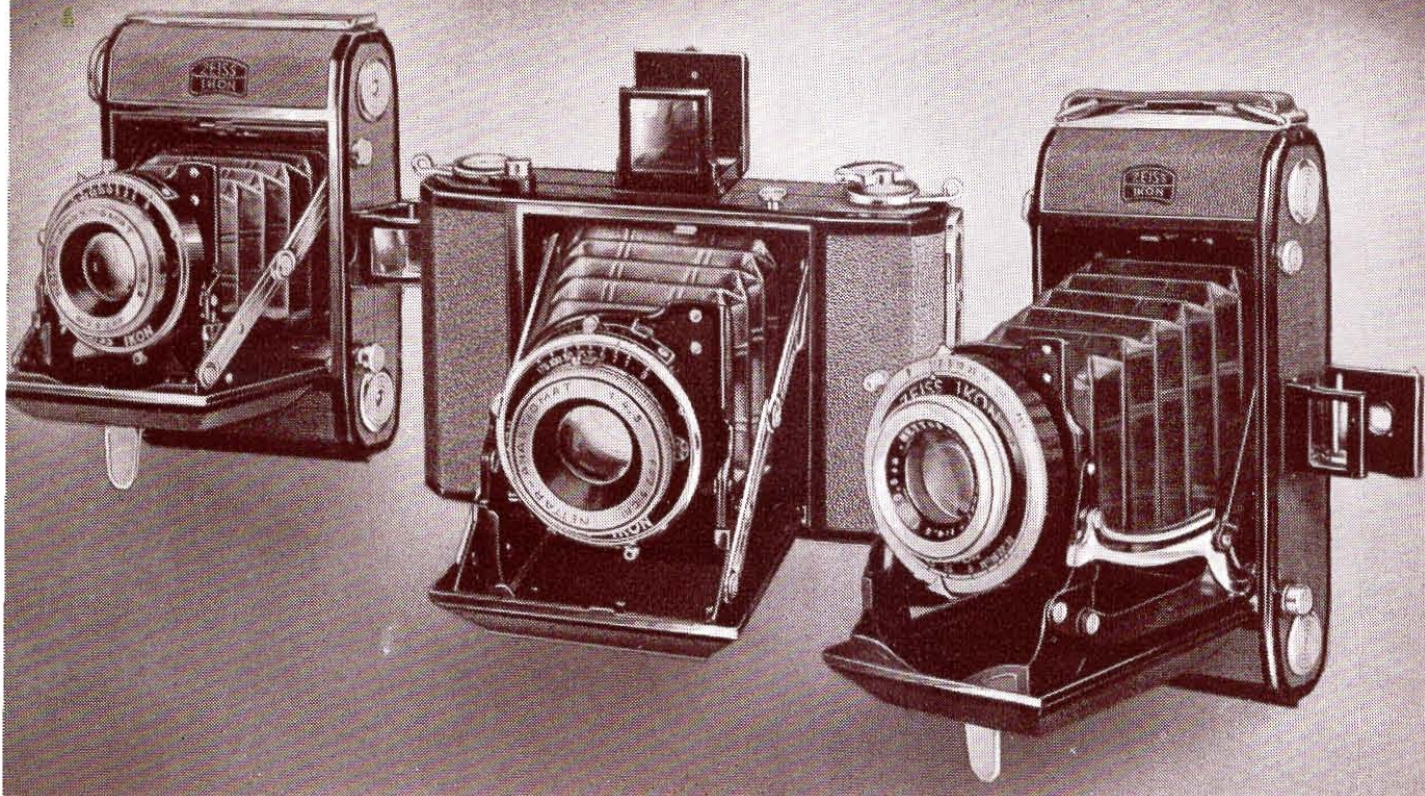
The Baby Box Tengor has a direct vision finder and no supplementary lenses are provided as all objects from about 5 feet are in focus. Other models are provided with large brilliant finders.

Box Tengor with Frontar $f/11$ and Special shutter.

For pictures	$1\frac{5}{8}'' \times 1\frac{1}{4}''$ (16 exp.)	$2\frac{1}{4}'' \times 1\frac{3}{4}''$ (16 exp.)	$3\frac{1}{4}'' \times 2\frac{1}{4}''$ (8 exp.)	$3\frac{1}{4}'' \times 2\frac{1}{4}''$ Model II†
			£ s. d.	£ s. d.	£ s. d.	£ s. d.
Price	1 0 0	1 5 0	1 7 6	1 12 6
Leather Case	0 3 0	0 6 0	0 7 0	0 7 0
Yellow Filter	0 4 6	0 6 9	0 6 9	0 6 9

†With double exposure prevention device.





Nettar . . .

The Nettar is the high grade camera at a popular price, and with its fine lenses and shutters, sound constructional features and handsome finish, is an instrument that will give many years' satisfactory service. The Nettar is always ready for use. It springs open at the touch of a button. Thanks to the Zeiss Ikon two-point setting it is as easy to use as a box camera, but with its range of Zeiss Ikon lenses and high grade shutter equipment gives much wider scope.

The Zeiss Ikon two-point setting of focussing scale and iris diaphragm is provided. When the focussing distance and diaphragm are set to these two points respectively, everything over about 12 ft. will be sharp and correctly exposed with 1/25th second in a reasonably bright light. Thus the Nettar can be carried ready for a quick snap without having to worry whether the picture will be sharp.

The smooth working shutter release on the camera body permits even comparatively long instantaneous exposures to be made with the camera held in the hand, and the danger of blurred pictures from camera shake is greatly reduced.

The Nettar is obtainable in three sizes—for sixteen pictures, $2\frac{1}{4}'' \times 1\frac{3}{4}''$, for twelve pictures, $2\frac{1}{4}'' \times 2\frac{1}{4}''$ on the usual $3\frac{1}{4}'' \times 2\frac{1}{4}''$ spool, and for eight pictures, $3\frac{1}{4}'' \times 2\frac{1}{4}''$,

In models fitted with Derval, Telma and Klio shutters, all the settings for shutter speeds and focussing distances can be read off from above the camera. All models fitted with $f/4.5$ lenses have a special screw-on filter mount, and the screw over filters need not be removed when the camera is closed. Direct vision finders for eye-level pictures are standard with all Nettar models, and a large slip-on brilliant finder is also available with all models (except those marked thus †) at 12/6 extra.

For the photographer who requires a really good camera at a moderate price, there is nothing better than the Nettar series.



Nettar for $2\frac{1}{4}'' \times 1\frac{3}{4}''$ pictures—16 exposures.

Dimensions, $1\frac{1}{4}'' \times 3'' \times 4\frac{1}{2}''$ —Weight, $14\frac{1}{2}$ – $15\frac{1}{4}$ ozs.

Lens	Focal Length	Shutter	Code No.	£	s.	d.
Nettar f/6.3 ...	3"	Derval ...	515/Cd ...	3	7	6
Nettar f/6.3 ...	3"	Telma ...	515/Ct ...	4	0	0
Nettar f/4.5 ...	3"	Telma ...	515/Dt ...	5	0	0
Nettar f/4.5 ...	3"	Klio OO ...	515 Dk ...	5	12	6

Nettar for $2\frac{1}{4}'' \times 2\frac{1}{4}''$ pictures—12 exposures.

Dimensions, $1\frac{1}{4}'' \times 3'' \times 5\frac{1}{4}''$ —Weight, 19 ozs.

Nettar f/6.3 ...	3"	Telma ...	515/16 Ct ...	4	17	6
Nettar f/4.5 ...	3"	Klio OO ...	515/16 Dk ...	6	7	6

Nettar for $3\frac{1}{4}'' \times 2\frac{1}{4}''$ pictures—8 exposures.

Dimensions, $1\frac{3}{8}'' \times 3\frac{1}{8}'' \times 6''$ —Weight, 20–23 ozs.

†Nettar f/7.7 ...	$4\frac{1}{8}''$	Automat ...	510/2Aa ...	2	12	6
†Nettar f/7.7 ...	$4\frac{1}{8}''$	Automat, with delayed action release.	510/2Aas ...	3	5	0
Nettar f/6.3 ...	$4\frac{1}{8}''$	Derval ...	515/2 Cd ...	3	12	6
Nettar f/6.3 ...	$4\frac{1}{8}''$	Telma ...	515/2 Ct ...	4	2	6
†Nettar f/4.5 ...	$4\frac{1}{4}''$	Telma ...	515/2 Dt ...	5	12	6
†Nettar f/4.5 ...	$4\frac{1}{4}''$	Klio O ...	515/2 Dk ...	6	5	0
Nettar f/4.5 ...	$4\frac{1}{8}''$	Compur OS	515/2 Dcs ...	7	5	0
Zeiss Tessar f 4.5 ...	$4\frac{1}{8}''$	Compur OS	515/2 Ucs ...	9	17	6

†Without shutter release on camera body and with frame and brilliant finders.

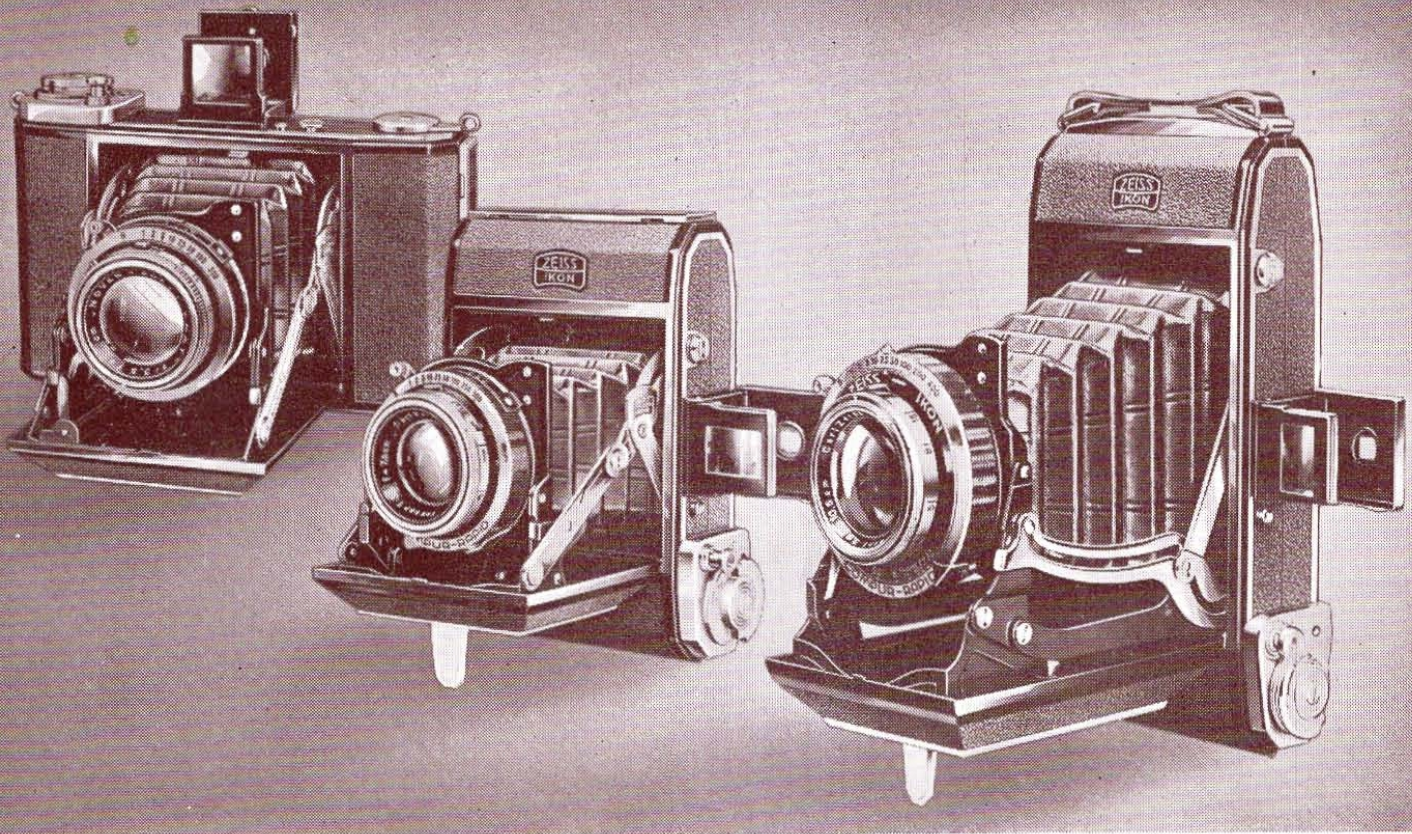
‡This model can also be supplied equipped with both frame and brilliant finders, but without screw over mount.

For filters, leather cases, &c., see pages 20–24.

Taken with Nettar $3\frac{1}{4}'' \times 2\frac{1}{4}''$

Nettar f/3.5, 1/50th second at f/8.





Ikonta . . .

To the photographer who wants the most up-to-date non-range finder roll film camera, the Ikonta will make an immediate appeal. It is equipped with Zeiss Ikon Novars—high grade anastigmats with apertures up to $f/3.5$, or the world-famous Zeiss Tessars, acknowledged to be the finest optical equipment for any camera. Compur shutters are fitted as standard to the Ikonta.

The Ikonta is made in three sizes for $2\frac{1}{4}'' \times 1\frac{3}{4}''$, $2\frac{1}{4}'' \times 2\frac{1}{4}''$, and $3\frac{1}{4}'' \times 2\frac{1}{4}''$ pictures, and embodies many of the latest features in camera design.

A special signal device shows whether the film has been wound on. If a white disc appears in the small aperture by the winding knob, the exposure has been made, and the interlocking arrangement will not permit the negative to be exposed a second time until the film has been wound on. When the film has been advanced for the next exposure, a red disc appears in the opening. This arrangement positively prevents all unintentional double exposures, although double exposures can be made when required, as, for instance, in trick photography, and the colour of the signal will immediately tell the photographer whether a fresh section of the film is in position or not.

All Ikontas spring open at the touch of a button, and the vibrationless shutter release on the camera body does much to eliminate camera shake. The standard view finder fitted to the Ikonta is of the collapsible optical direct vision type, which springs open automatically when the camera is erected for use. In addition, provision is made for attaching a large detachable brilliant finder (12/6 extra) when required. A wide choice of lenses up to the Zeiss Tessar $f/3.5$ are available, and an almost invisible screw thread on the lens cell permits the new Zeiss Ikon screw over filters to be used, which can be closed up in the camera.

The Ikonta is a roll film camera of the highest grade, and its fine chromium finish, modern and scientific design, reveal the skill and craftsmanship devoted to its manufacture.



Ikonta for $2\frac{1}{4}'' \times 1\frac{3}{8}''$ pictures—16 exposures.

Dimensions, $1\frac{1}{4}'' \times 3'' \times 4\frac{1}{2}''$ —Weight, 17 ozs.

Lens.	Focal Length	Shutter	Code No.	£	s.	d.
Novar $f/3.5$...	3"	Compur OO	521/Fc ...	9	12	6
Zeiss Tessar $f/3.5$...	3"	Compur OOR	521/Lcr ...	13	10	0

Ikonta for $2\frac{1}{4}'' \times 2\frac{1}{4}''$ pictures—12 exposures.

Dimensions, $1\frac{1}{4}'' \times 3'' \times 5\frac{1}{4}''$ —Weight, 19 ozs.

Lens.	Focal Length	Shutter	Code No.	£	s.	d.
Novar $f/4.5$...	3"	Klio OO ...	521/16 Ik ...	8	2	6
Novar $f/3.5$...	3"	Compur OO	521/16 Fc ...	10	10	0
Zeiss Tessar $f/3.5$...	3"	Compur OOR	521/16 Lcr ...	13	17	6

Ikonta for $3\frac{1}{4}'' \times 2\frac{1}{4}''$ pictures—8 exposures.

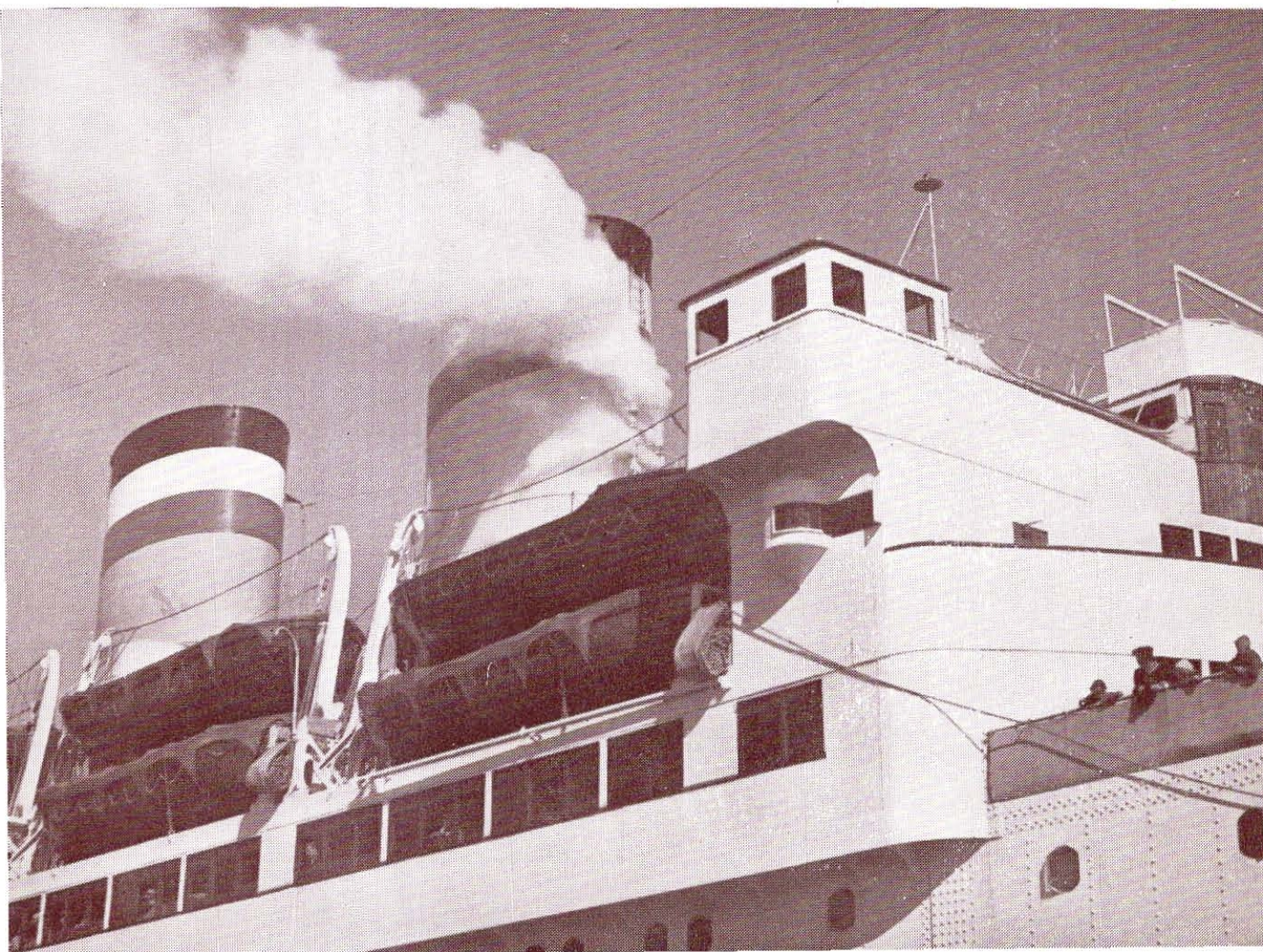
Dimensions, $1\frac{5}{8}'' \times 3\frac{1}{8}'' \times 6\frac{3}{8}''$ —Weight, 24 ozs.

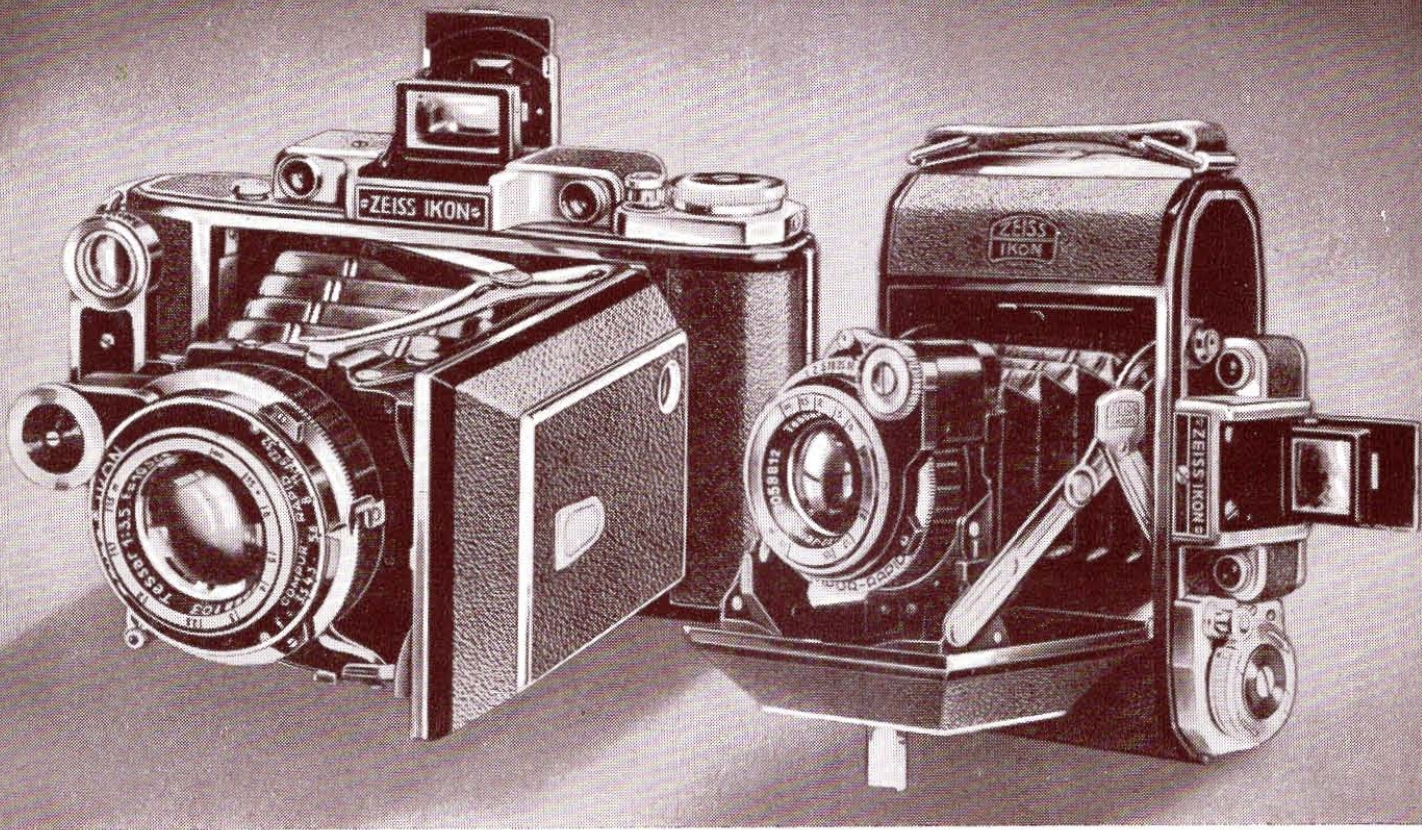
Lens	Focal Length	Shutter	Code No.	£	s.	d.
Novar $f/4.5$...	$4\frac{1}{8}''$	Compur OS	521/2 lcs ...	8	15	0
Novar $f/3.5$...	$4\frac{1}{8}''$	Compur OS	521/2 Fcs ...	9	12	6
Novar $f/3.5$...	$4\frac{1}{8}''$	Compur OSR	521/2 Fcsr ...	10	15	0
Zeiss Tessar $f/4.5$...	$4\frac{1}{8}''$	Compur OS	521/2 Ucs ...	11	10	0
Zeiss Tessar $f/3.5$...	$4\frac{1}{8}''$	Compur OSR	521/2 Lcsr ...	15	5	0

For prices of cases, yellow filters, &c., see pages 20-24.

Taken with Ikonta $2\frac{1}{4}'' \times 1\frac{3}{8}''$

Novar $f/3.5$, $1/100$ th second at $f/11$.





Super Ikonta, Model II

To enable the utmost use to be made of the wonderful definition and speed of the fast Zeiss Tessars fitted to the Super Ikonta, this fine instrument is fitted with a distance meter on the Zeiss Ikon patented rotating wedge system, coupled automatically to the lens focussing. This ensures accurate focus on any desired plane in a moment by rotation of a milled wheel until two similar images coalesce. The shutter equipment is Compur normal to $1/250$ th second or Compur rapid to $1/400$ th second ($1/500$ th second in the $2\frac{1}{4}'' \times 1\frac{3}{4}''$ size).

Except with the $4\frac{1}{4}'' \times 2\frac{1}{2}''$ model, an interlocking device between the film wind and shutter release positively prevents double exposures because the release will not function until the film has been wound on for the next exposure. For trick photography or special effects, however, two exposures can be made on one section of the film if required. A signal is also provided, adjacent to the shutter release, which shows whether the film has been wound on. When the exposure has been made the signal changes to white and remains so until the film is advanced for the next exposure. The shutter release is conveniently placed on the camera body and does much to obviate the liability towards camera shake. A direct vision finder on the Albada principle is provided, except with models with Novar $f/3.5$.

An important new feature is the almost invisible screw thread on the lens cell to accommodate the Zeiss Ikon screw over filters. The camera can be closed with these filters in position and, of course, the Super Ikonta is a fully self-erecting model—springing open at the touch of a button.

The $3\frac{1}{4}'' \times 2\frac{1}{4}''$ and $4\frac{1}{4}'' \times 2\frac{1}{2}''$ sizes are also provided with a mask so that, when desired, sixteen pictures, $2\frac{1}{4}'' \times 1\frac{3}{4}''$ or $2\frac{1}{4}'' \times 2\frac{1}{8}''$ respectively, can be taken instead of the usual eight. The $2\frac{1}{4}'' \times 1\frac{3}{4}''$ Super Ikonta takes sixteen exposures on the usual $3\frac{1}{4}'' \times 2\frac{1}{4}''$ spool.

These Super Ikonta models are elegantly finished in chrome, and their fine optical equipment and modern features entitle them to be considered as the best roll film cameras of their class available at the present day.





Super Ikonta II for $2\frac{1}{4}'' \times 1\frac{3}{4}''$ pictures—16 exposures.

Dimensions, $1\frac{3}{16}'' \times 3\frac{3}{8}'' \times 4\frac{1}{2}''$ —Weight, $20\frac{1}{2}$ ozs.

Lens	Focal Length	Shutter	Code No.	£	s.	d.
†Novar $f/3.5$ 3"	Compur OS	531 Fcs ...	16	17	6
Zeiss Tessar $f/3.5$ 3"	Compur OOR	531 Lcr ...	22	15	0

Super Ikonta II for $3\frac{1}{4}'' \times 2\frac{1}{4}''$ pictures—8 exposures or 16 divided $2\frac{1}{4}'' \times 1\frac{3}{4}''$.

Dimensions, $1\frac{3}{8}'' \times 3\frac{1}{2}'' \times 6''$ —Weight, 29 ozs.

†Novar $f/3.5$ $4\frac{1}{8}''$	Compur OS	531/2 Fcs ...	18	2	6
Zeiss Tessar $f/4.5$ $4\frac{1}{8}''$	Compur OS	531/2 Ucs ...	21	0	0
Zeiss Tessar $f/3.5$ $4\frac{1}{8}''$	Compur OSR	531/2 Lcsr ...	26	5	0

Super Ikonta I for $4\frac{1}{4}'' \times 2\frac{1}{2}''$ pictures—8 exposures or 16 divided $2\frac{1}{2}'' \times 2\frac{1}{8}''$.

Dimensions, $1\frac{5}{8}'' \times 3\frac{3}{4}'' \times 7''$ —Weight, 34 ozs.

*Zeiss Tessar $f/4.5$ $4\frac{3}{4}''$	Compur OSR	530/15 Ucsr ...	21	10	0
---------------------------	----------------------	------------	-----------------	----	----	---

*No double exposure prevention device with this model, and there are other differences as compared with Super Ikonta II.
See next page for Super Ikonta $2\frac{1}{4}'' \times 2\frac{1}{4}''$.

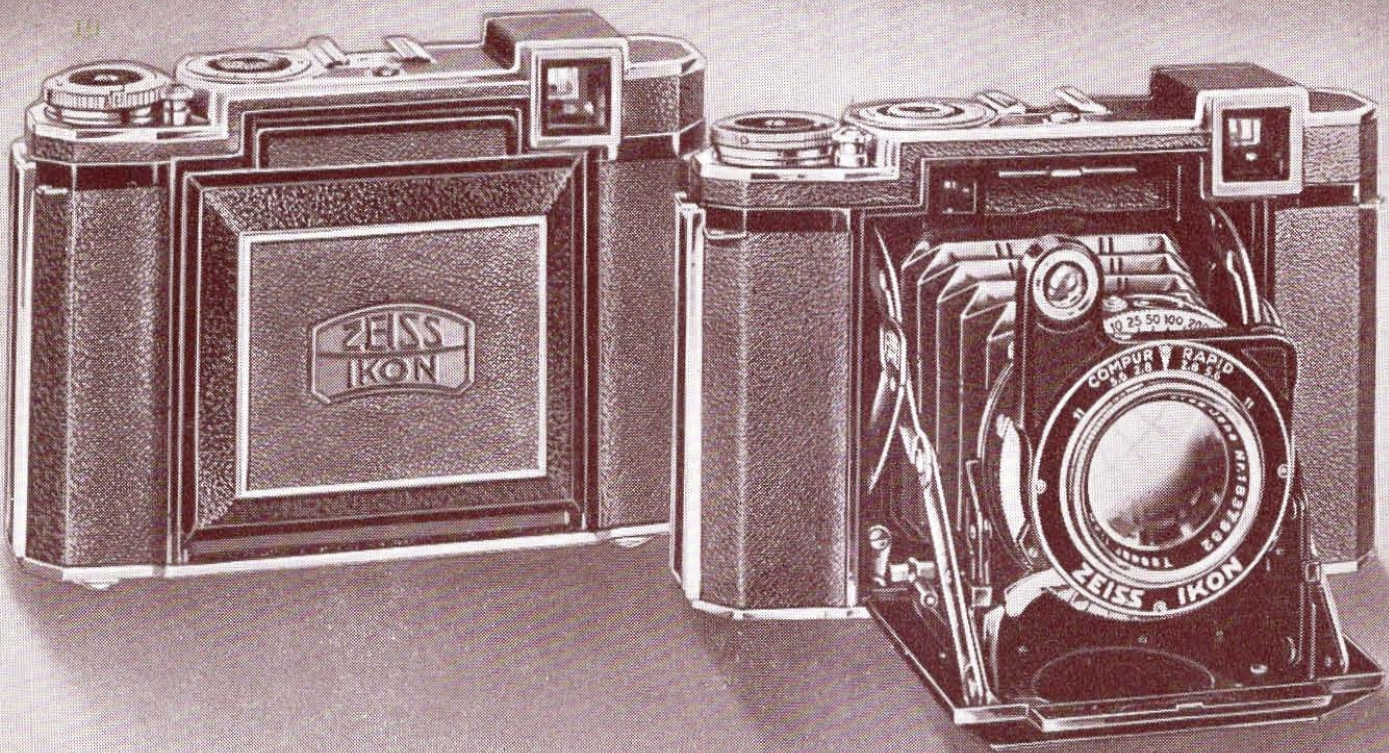
†Delivery April, 1939.

For prices of cases, filters, &c., see pages 20-24.

Taken with Super Ikonta

Zeiss Tessar $f/3.5$, $1/300$ th second at $f/5.6$.





Super Ikonta $2\frac{1}{4}'' \times 2\frac{1}{4}''$...

Probably the most versatile of all roll film cameras is the Super Ikonta taking eleven pictures $2\frac{1}{4}'' \times 2\frac{1}{4}''$ on the usual $3\frac{1}{4}'' \times 2\frac{1}{4}''$ spool. It offers most of the advantages of the miniature camera combined with the larger negative size and is the most advanced of all precision roll film instruments. The optical equipment is the exceptionally rapid Zeiss Tessar $f/2.8$ —automatically focussed by coupled wedge distance meter. The distance meter is combined with the view finder in one eye-piece as with the Contax, thus ensuring unequalled speed and accuracy in manipulation. The Super Ikonta $2\frac{1}{4}'' \times 2\frac{1}{4}''$ is equipped with the Zeiss Ikon double exposure prevention device, which, with this model, also provides a definite stop for each section of the film, and not only prevents unintentional double exposures but makes blank exposures impossible. The exposure counter on top of the camera is automatic so no reference to the usual red window is necessary after the film has been set for the first exposure. Compur Rapid shutter to $1/400$ th second, with delayed action release, is fitted, and there is a shoe to accommodate special finders and other accessories, e.g., the Contameter near focussing device.

Super Ikonta for $2\frac{1}{4}'' \times 2\frac{1}{4}''$ pictures—11 exposures.

Dimensions, $2'' \times 3\frac{3}{4}'' \times 5\frac{7}{8}''$ —Weight, 36 ozs.

Lens	Focal Length	Shutter	Code No.	£ s. d.
Zeiss Tessar $f/2.8$... $3\frac{1}{8}''$	Compur OSR	532/16 Pcsr ...	30 7 6

For prices of cases, filters, &c., see pages 20–24.

Special Super Ikonta catalogue on application.



Ikoflex II (1939 model) . . .

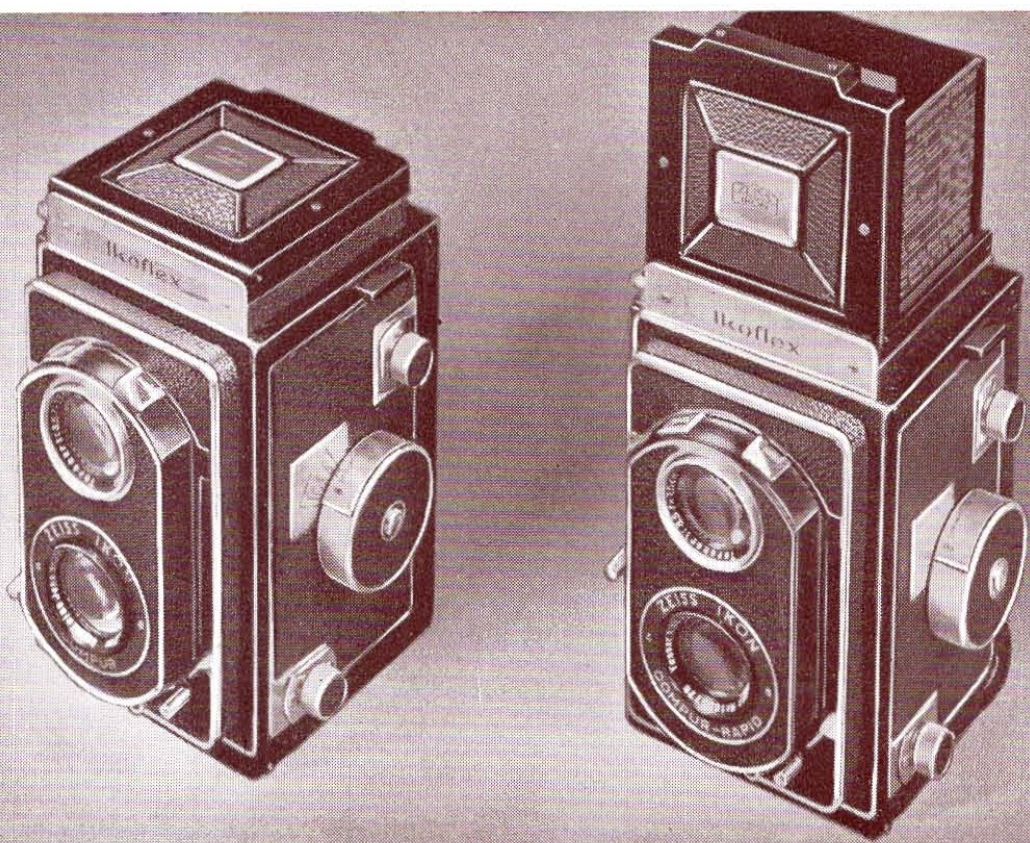
The latest design by Zeiss Ikon in compact twin-lens cameras selling at moderate prices is the Ikoflex II (1939 model). It takes twelve pictures $2\frac{1}{4}'' \times 2\frac{1}{4}''$ on the usual $3\frac{1}{4}'' \times 2\frac{1}{4}''$ spool, and thanks to the special condenser type focussing screen, gives an unusually brilliant viewing image even to the corners. A large diameter focussing knob, upon which a depth of focus scale is engraved, adjusts both viewing and taking lenses simultaneously. For critical focussing a supplementary magnifier fitted into the finder hood can be brought into action, and the front and back of the hood also form a direct vision finder for eye-level pictures. The Ikoflex is fitted with a double exposure and blank exposure prevention device, in which respect it operates on the same principle as Super Ikonta $2\frac{1}{4}'' \times 2\frac{1}{4}''$. The lens aperture and shutter speeds appear in a protected window, and can be read off from the top of the camera. The shutter release on the body of the instrument follows the modern Zeiss Ikon practice that has fully justified itself by practical experience.

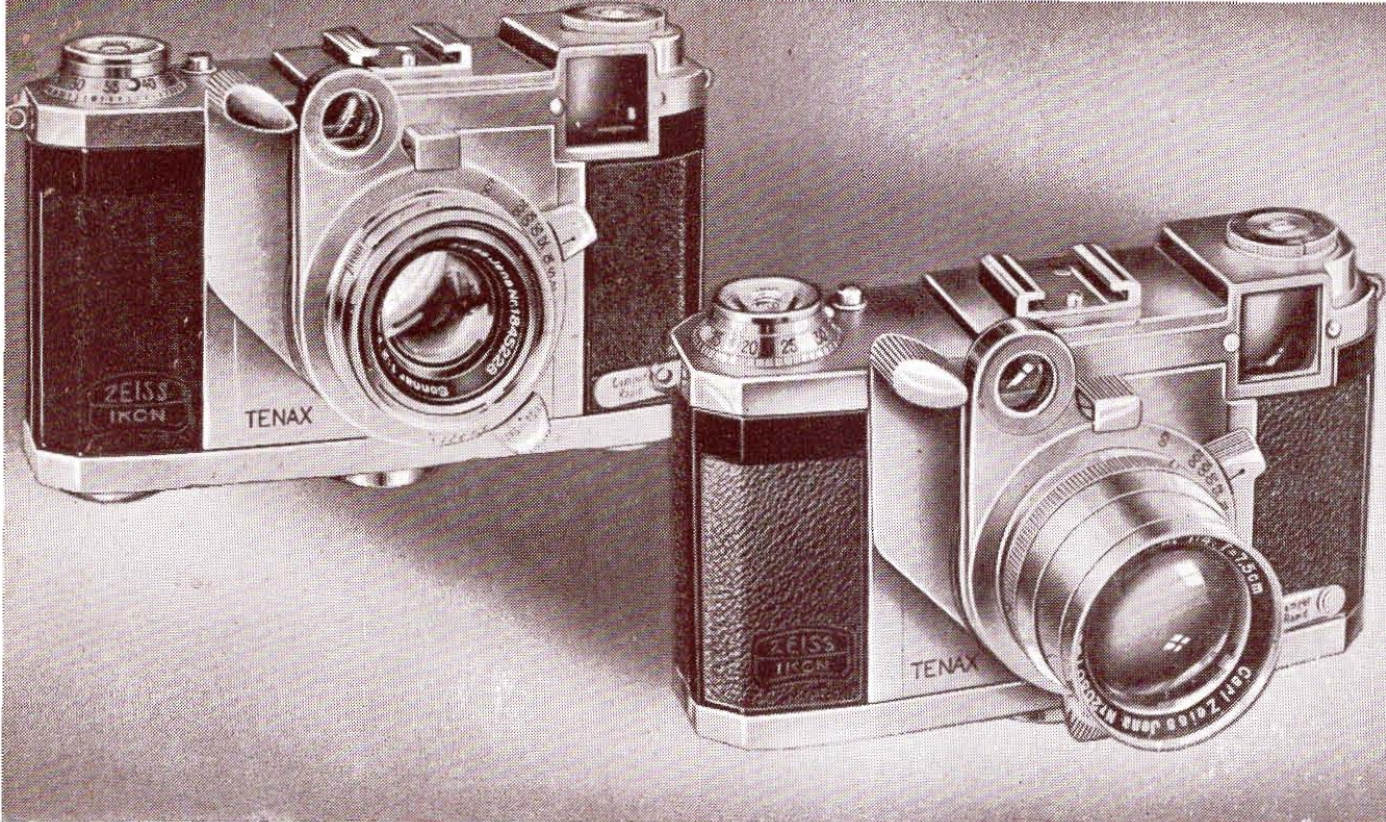
Ikoflex II (1939 model) for $2\frac{1}{4}'' \times 2\frac{1}{4}''$ pictures—12 exposures.

Dimensions, $5\frac{5}{8}'' \times 3\frac{3}{8}'' \times 3''$ —Weight, 36 ozs.

Lens	Focal Length	Shutter.	Code No.	£ s. d.
Zeiss Triotar f/3.5	... 3"	Compur OO	852/16 Kc ...	18 0 0
Zeiss Tessar f/3.5	... 3"	Compur OOR	852/16 Lcr ...	23 5 0

For prices of cases, supplementary lenses, filters, &c., see pages 20-24.





Tenax . . .

The Tenax is the new Zeiss Ikon quick action precision miniature for 24×24 mm. negatives. It takes all 35 mm. negative material at present in general use.

Although in designing the Tenax the desirability of quick manipulation has been made a prominent feature—exposures at the rate of one per second can be made with ease and certainty—nothing has been sacrificed on this account to efficiency or reasonable versatility. The film wind and setting of the shutter are operated simultaneously by one lever. Provision is made for the use of wide angle and long focus interchangeable Zeiss lenses. The Compur Rapid shutter with delayed action release is speeded to $1/400$ th second, and is mounted independently of the lens. The Zeiss Tessar $f/2.8$ or Zeiss Sonnar $f/2$ are the standard optical equipment supplied with the Tenax and all lenses are focussed by coupled distance meter, which, as is the case with the Contax, is combined in one eye-piece with the view finder. A wide range of sensitive material, black and white or colour, is available in lengths for 18 or 50 exposures.

Tenax for $1" \times 1"$ (24×24 mm.) pictures—18 or 50 exposures.

Dimensions, $5" \times 2\frac{5}{8}" \times 1\frac{3}{8}"$ —Weight, 16 ozs.

Lens	Focal Length	Shutter	Code No.	£ s. d.
Zeiss Tessar $f/2.8$... $1\frac{9}{16}"$	Compur OSR	580/27 Pcsr	31 10 0
Zeiss Sonnar $f/2$... $1\frac{9}{16}"$	Compur OSR	580/27 Ncsr	39 0 0

For filters, cases, &c., see pages 20–24. Interchangeable lenses, page 17.



Super Nettel & Nettax

The Super Nettel has been constructed for those photographers who require a miniature combining Zeiss Ikon precision construction with moderate price. It is equipped with Zeiss $f/3.5$ lenses focussed by coupled distance meter, and a metal focal plane shutter giving speeds from $1/5$ th to $1/1000$ th of a second. The winding of the shutter and advancing of the film are controlled by a single knob, in the centre of which is the shutter release conveniently situated on the top of the camera body. A shoe is provided to take supplementary finders, Contameter near focussing device, and other useful accessories.

The Nettax comes between the Super Nettel and the Contax. The folding base-board is dispensed with, but facilities for interchangeable lenses are provided. The standard lens is of 2" focal length, and, in addition, a wide angle Tessar $f/8$ and a long focus Triotar $4\frac{1}{8}$ " focal length are available.

Super Nettel I for $1\frac{1}{2} \times 1$ " (24×36 mm.) pictures—12 or 36 exposures.

Dimensions, $5\frac{1}{4} \times 2\frac{3}{4} \times 1\frac{3}{8}$ "—Weight, 23 ozs.

Lens	Focal Length	Code No.	£	s.	d.
Zeiss Triotar $f/3.5$...	2"	536/24 K ...	18	12	6
Zeiss Tessar $f/3.5$...	2"	536/24 L ...	20	0	0

Nettax for $1\frac{1}{2} \times 1$ " (24×36 mm.) pictures—12 or 36 exposures.

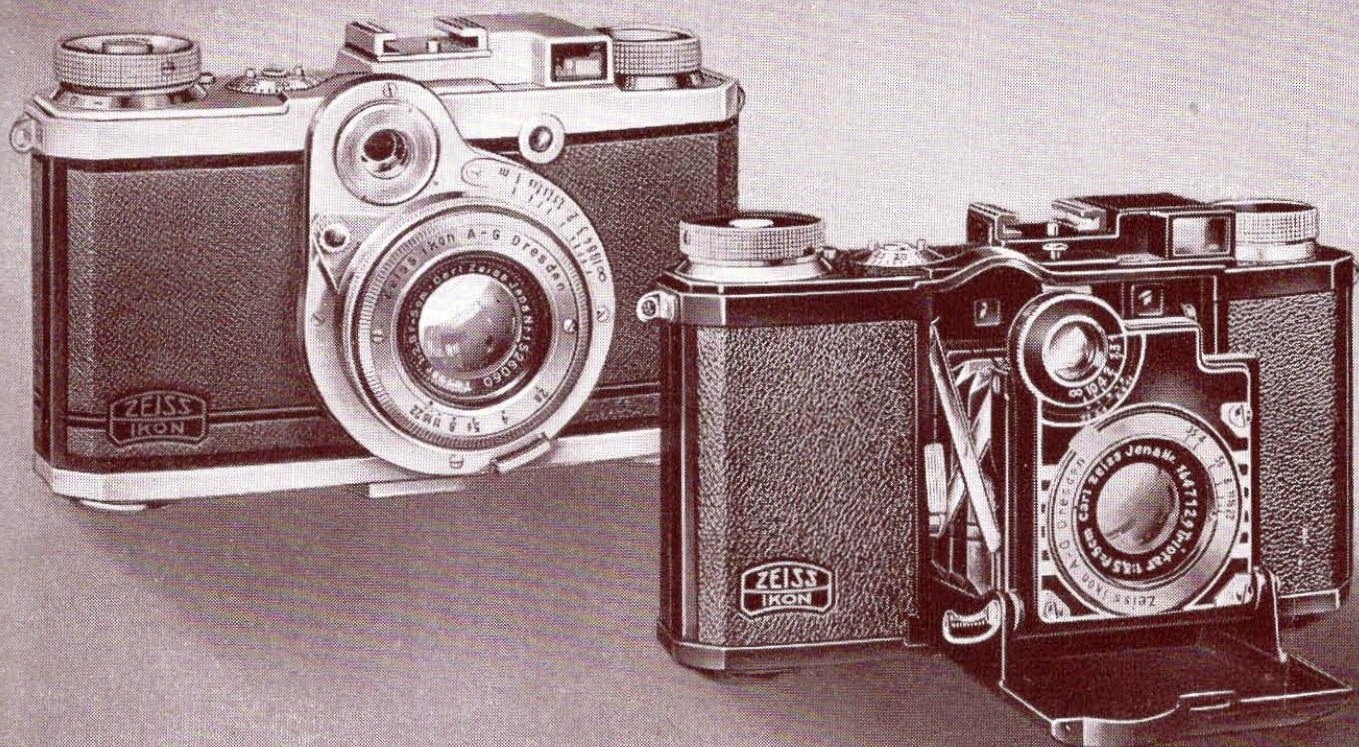
Dimensions, $5\frac{1}{4} \times 2\frac{3}{4} \times 1\frac{3}{8}$ "—Weight, 17 ozs. without lens.

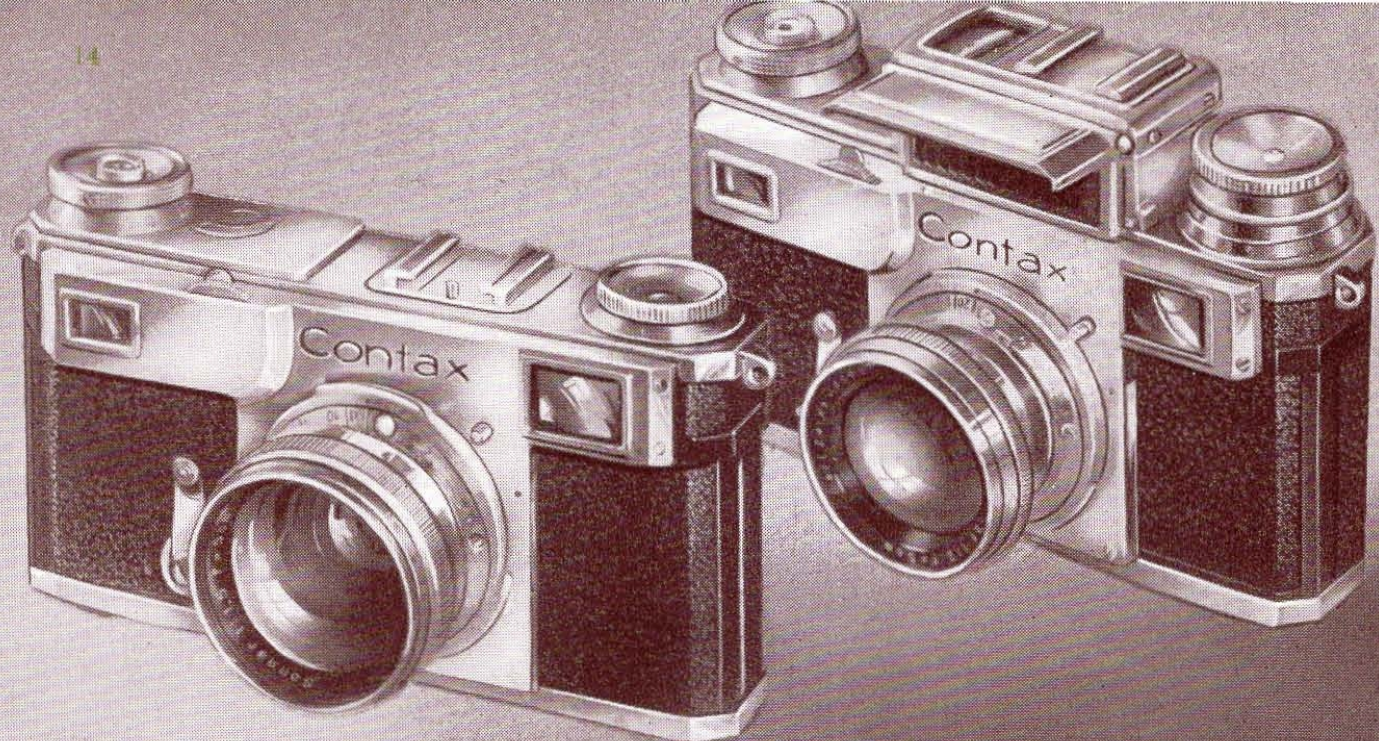
Lens	Focal Length	Code No.	£	s.	d.
Zeiss Tessar $f/3.5$...	2"	538/24 L ...	29	5	0
Zeiss Tessar $f/2.8$...	2"	538/24 P ...	32	0	0

Leather cases, filters, &c., see pages 20–24.

Interchangeable lenses for Nettax, page 17.

For complete descriptions ask for a copy of "Contax Photography."





Contax II...

The Contax is famous as the most versatile of all precision miniatures. The distance meter and view-finder are combined in one eye-piece, a method which ensures unequalled speed, convenience and accuracy both in composing the picture and in focussing. Fifteen interchangeable Zeiss lenses, apertures from $f/1.5$, focal lengths from $1\frac{1}{8}$ " to 20", are available, thus enabling the Contax to tackle all branches of photography. The metal focal plane shutter speeded to $1/1250$ th second is unaffected by climatic conditions, and is fitted with delayed action release. Speeds are visible on one knob, and can be adjusted both before and after winding the shutter, which action also advances the film for the next exposure. The shutter release is conveniently placed in the centre of the film winding knob, and the elegant shape of the die-cast body enables it to be held steadily in the hand while making exposures. The back of the Contax is detachable for cleaning, and permits a plate back to be used. The wide range of accessories available makes the Contax adaptable for photo-micrography, clinical photography, and other specialized branches. The Contax takes 24×36 mm. negatives, in which size a wide selection of sensitive material is available in lengths for 12 or 36 exposures.

Contax II for $1\frac{1}{2} \times 1$ " (24×36 mm.) pictures—12 or 36 exposures.
 Dimensions of camera body approx., $5\frac{1}{2} \times 2\frac{3}{4} \times 1\frac{3}{8}$ "—Weight, without lens, approx. $20\frac{1}{2}$ ozs.

Lens	Focal Length	Code No.	£	s.	d.
Zeiss Tessar $f/3.5$... 2" ...	543/24 L ...	40	10	0
Zeiss Tessar $f/2.8$... 2" ...	543/24 P ...	43	5	0
Zeiss Sonnar $f/2$ 2" ...	543/24 N ...	50	10	0
Zeiss Sonnar $f/1.5$... 2" ...	543/24 J ...	65	15	0

Leather cases, filters &c., see pages 20–24. Interchangeable lenses, page 17.

Complete catalogue, "Contax Photography," containing full information concerning all Zeiss Ikon "miniatures," free on application.

"The Miniature Camera at Work," by J. Steinhilber, gives much helpful information on "miniature" matters. Price 3/6, from Zeiss Ikon dealers.



Contax III . . .

Exactly similar in construction to Contax II, the Contax III also provides a built-in photo-electric exposure meter. It is thus particularly suitable for colour photography, since correct exposure, very desirable throughout "miniature" work, is especially important when using colour films which allow hardly any exposure latitude. The Contax III built-in photo-electric exposure meter is extremely sensitive, and is so constructed that it embraces the same angle of view as the normal 2" taking lens, therefore it ensures an accuracy which cannot be equalled by an exposure meter used independently.

The exposure meter on the Contax III is controlled by a simple system of discs and it is suitable for use with both natural and artificial light. An indicator is set to the appropriate film speed, then a milled wheel, conveniently situated under the rewinding knob, is turned until the pointer in the exposure meter window is brought opposite an index mark. The correct exposure time for any aperture can then be read off.

Contax III Prices

Dimensions of camera body, $5\frac{1}{2}" \times 3\frac{5}{8}" \times 1\frac{3}{8}"$ —Weight, without lens, 25 ozs.

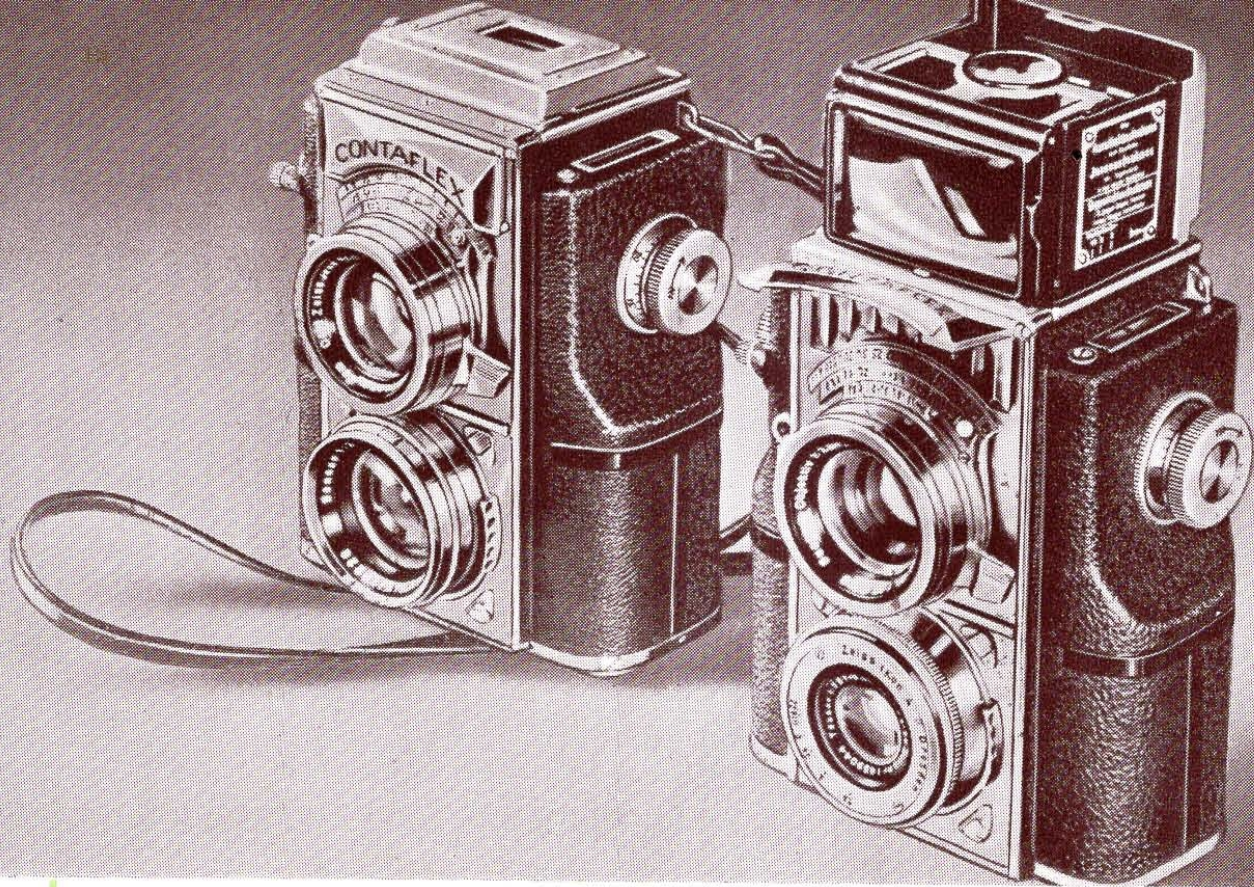
Lens	Focal Length	Code No.	£	s.	d.
Zeiss Tessar f/3.5	2"	544/24 L	53	0	0
Zeiss Tessar f/2.8	2"	544/24 P	55	15	0
Zeiss Sonnar f/2 ...	2"	544/24 N	63	0	0
Zeiss Sonnar f/1.5	2"	544/24 J	78	5	0

Leather cases, filters, &c., see pages 20-24. Interchangeable lenses, page 17. For further information concerning Contax cameras, their interchangeable Zeiss lenses and accessories, ask for "Contax Photography."

Taken with the Contax

Zeiss Tessar f/2.8, 2" focal length.
1/500th second at f/4. Zeiss Ikon Panchrom Film.





Contaflex . . .

A universal precision twin-lens reflex—the Contaflex takes the usual 24×36 mm. film, and provides a choice of seven interchangeable Zeiss lenses. To overcome the difficulty experienced in visually focussing such a small image as $1\frac{1}{2}'' \times 1''$, the Contaflex has been equipped with a double size condenser focussing screen. A movable mask gives automatic compensation for parallax. The all-metal focal plane shutter speeded to $1/1000$ th second with delayed action release is unaffected by climatic conditions.

The finder hood forms also a direct vision finder of the van Albada type and in the reflecting front self-portraits, &c., can be composed when using the delayed action release.

The back of the Contaflex is detachable for cleaning, and permits a plate back and other accessories to be used. A wide range of accessories is available, so that even photo-micrography and many other specialized branches of photography can be practised.

Contaflex for Contax spools $1\frac{1}{2}'' \times 1''$ (24×36 mm.)—12 or 36 exposures.

Dimensions of camera body approx., $5\frac{1}{4}'' \times 4\frac{3}{8}'' \times 1\frac{7}{8}''$ —Weight, without lens, approx. 44 ozs.

Lens	Focal Length	Code No.	£	s.	d.
Zeiss Tessar $f/2.8$	2"	860/24 P	64	12	6
Zeiss Sonnar $f/2$	2"	860/24 N	71	17	6
Zeiss Sonnar $f/1.5$	2"	860/24 J	87	2	6

Leather cases, filters, &c., see pages 20–24. *Interchangeable lenses, page 17.*

Further information in "Contax Photography"—free on request.



The incomparable range of Zeiss Lenses

... comprises one of the most valuable features of the Zeiss Ikon miniature cameras.

The following interchangeable lenses are supplied :—

Lens	Focal Length	Contax			Contaflex			Nettax		
		£	s.	d.	£	s.	d.	£	s.	d.
† Zeiss Tessar f/8	1 1/8"	13	0	0	—	—	—	13	2	6
Orthometar f/4.5	1 1/8"	18	0	0	18	0	0	—	—	—
Biogon f/2.8	1 1/8"	25	17	6	25	17	6	—	—	—
Biotar f/2	1 1/8"	19	15	0	—	—	—	—	—	—
Sonnar f/2	3"	37	2	6	37	2	6	—	—	—
Triotar f/4	3"	16	17	6	16	17	6	—	—	—
Triotar f/5.6	4 1/8"	—	—	—	—	—	—	18	0	0
Sonnar f/4	5"	21	7	6	21	7	6	—	—	—
Tele-Tessar K f/6.3	7 1/8"	29	17	6	—	—	—	—	—	—
* Tele-Sonnar f/2.8	7 1/8"	75	12	6	—	—	—	—	—	—
* Tele-Tessar f/8...	12"	61	2	6	—	—	—	—	—	—
* Zeiss Fern (distance) Objective f/8 20"	20"	72	5	0	—	—	—	—	—	—

The following interchangeable lenses for the Tenax are available : Orthometar f/4.5 1 1/8" focal length £22 15 0—Sonnar f/4 3" focal length £21 0 0.

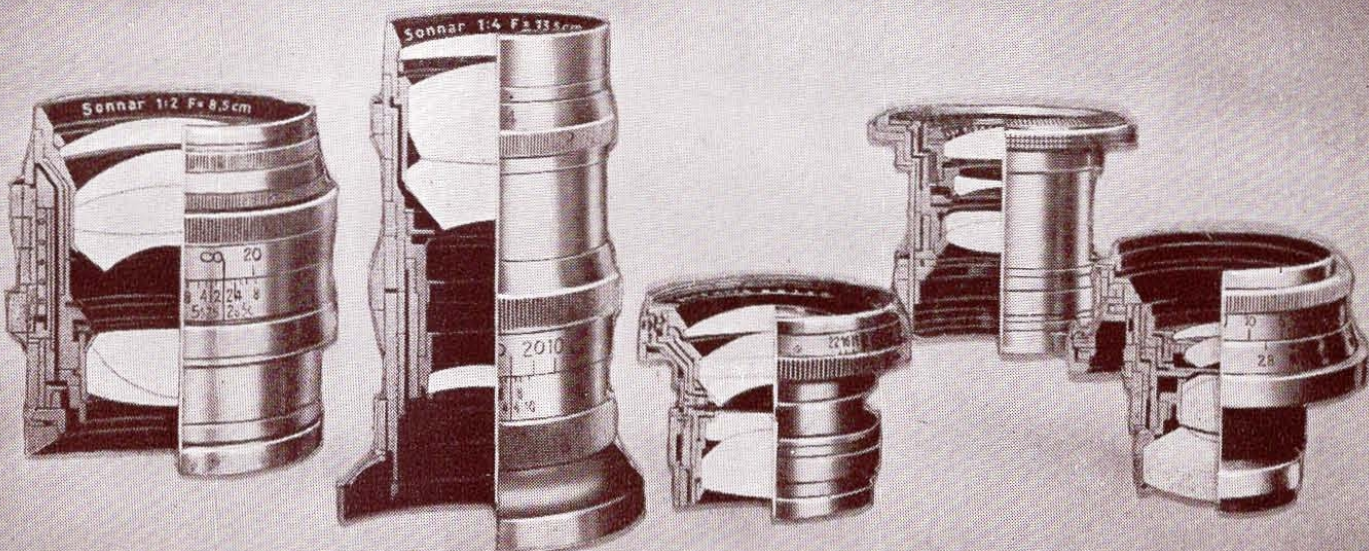
† Not coupled to distance meter.

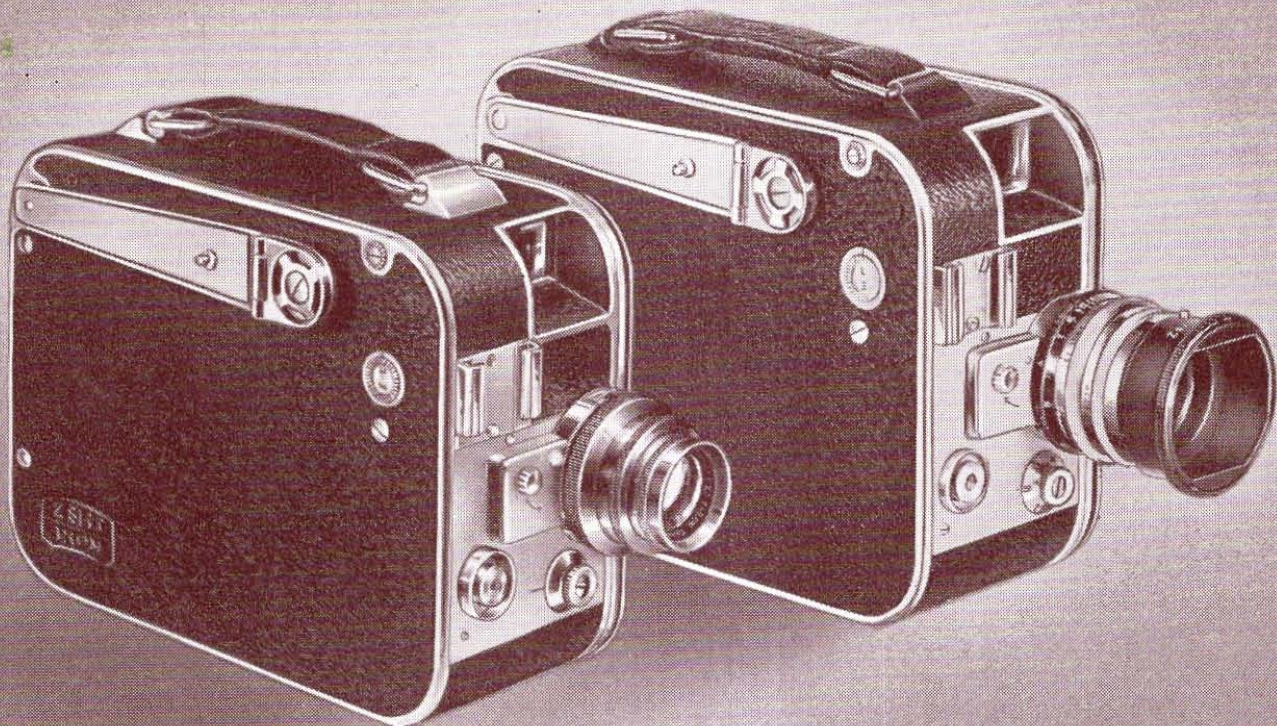
* Not coupled to distance meter, but Flektoscop reflex focussing device is included in the price.

The Contameter

Enables exposures to be made in the hand at distances of 20", 18" and 8", with the Contax, Nettax, Super Nettel, Contaflex, Tenax and Super Ikonta 2 1/4" x 2 1/4". Three supplementary lenses are provided, which slip on the camera lens, and sharp focus is ensured by moving the camera backwards and forwards until two images in the Contameter coincide :—

	£	s.	d.
Contameter	10	5	0
Adapter for using above on Contaflex	1	16	0





Movikon I K 16...

A new Zeiss Ikon precision 16 mm. cine camera at a moderate price is the Movikon I K 16, designed to meet the needs of the amateur who requires a high grade instrument taking the easily loaded 50' magazine. The new Movikon is built to the same exacting standards and embodies the same fine finish as all precision instruments bearing the Zeiss Ikon trade mark. The standard lens at the moment is Zeiss Tessar $f/2.7$, $4/5$ " focal length. As this relatively short focal length has great depth of focus no distance meter is necessary, but focussing is provided for "close-ups." The Movikon I K 16 later on will also be supplied with Zeiss Sonnar $f/1.4$. Provision for interchangeable lenses of $4/5$ ", 1", 2" and 3" focal length is made. The motor draws through the long length of 20' of film at one winding—sufficient for five to six average "shots"—and picture frequencies of 8, 16, 24 and 64 frames a second are provided.

A specially large built-in finder shows a brilliant image, and can be adjusted both for parallax and to show the correct angle of view for lenses of varying focal lengths. The instrument is extremely simple to load, and takes the Kodak 50' cassette black and white or colour.

Movikon I K 16 for easily Loaded 50' cassette.

Dimensions—Approx. $2\frac{1}{4}$ " \times $4\frac{1}{2}$ " \times 7".—Weight, approx. $4\frac{1}{2}$ lb.

Lens		Focal Length	Code No.	£ s. d.
Zeiss Tessar $f/2.7$...	$\frac{3}{4}$ "	5494 P	31 0 0
*Zeiss Sonnar $f/1.4$...	1"	5494 J	41 10 0

*Ready for delivery about April, 1939.

For further information ask for Movikon catalogue.



Movikon II 16 and 8...

The great magnification which the 8 mm. size film has to undergo when projected necessitates the use of an instrument of the highest precision class. Such is the Movikon 8, which gives results permitting the largest possible screen pictures. Zeiss Sonnar $f/2$ is standard, and owing to the short focal length giving great depth of focus no distance meter is required. The Movikon 8 takes both double 8 and straight 8 films.

The Movikon II 16 model, No. 5495, has been constructed for the 16 mm. enthusiast who requires the best and most versatile equipment, with price a secondary consideration. The normal lens is the Zeiss Sonnar $f/1.4$, focussing by coupled distance meter, view finder compensated for parallax, variable running speeds, and adjustable shutter sector giving exposures up to $1/1250$ th second. The interchangeable Zeiss lenses and many other important Movikon features are described in the interesting Movikon prospectus, available free on request.

Movikon 8 for double 8 or straight 8 film.

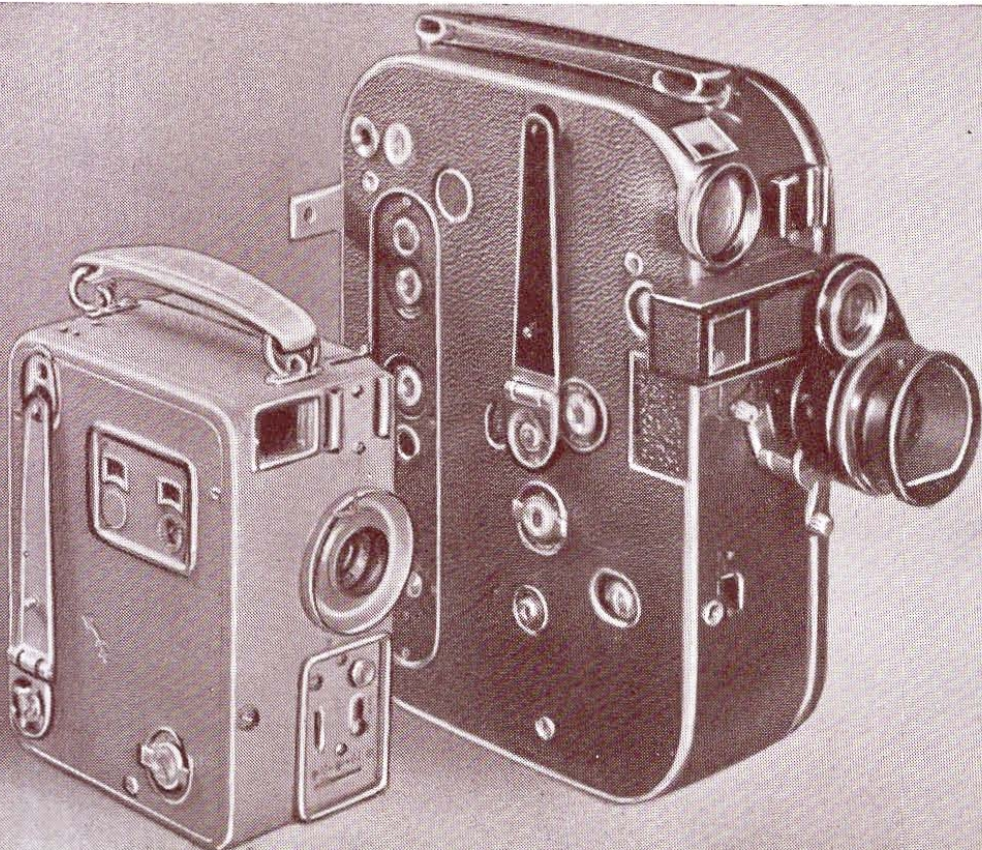
Dimensions approx., $2\frac{5}{8}'' \times 4'' \times 5\frac{1}{4}''$.—Weight approx. $3\frac{1}{4}$ lb.

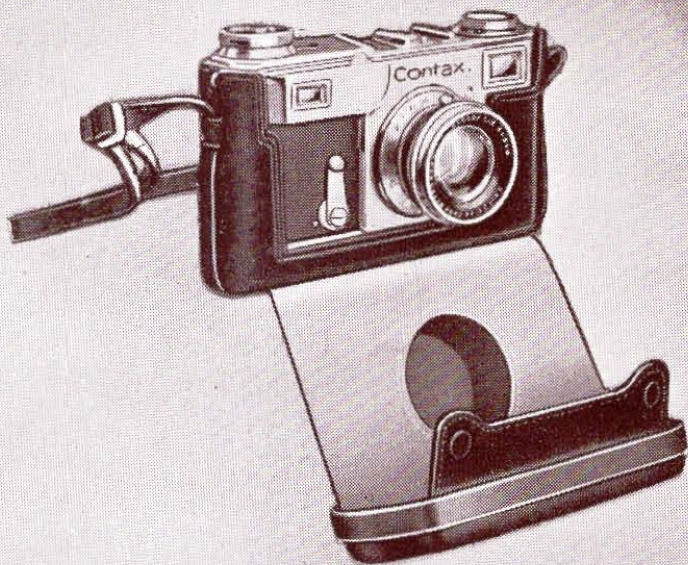
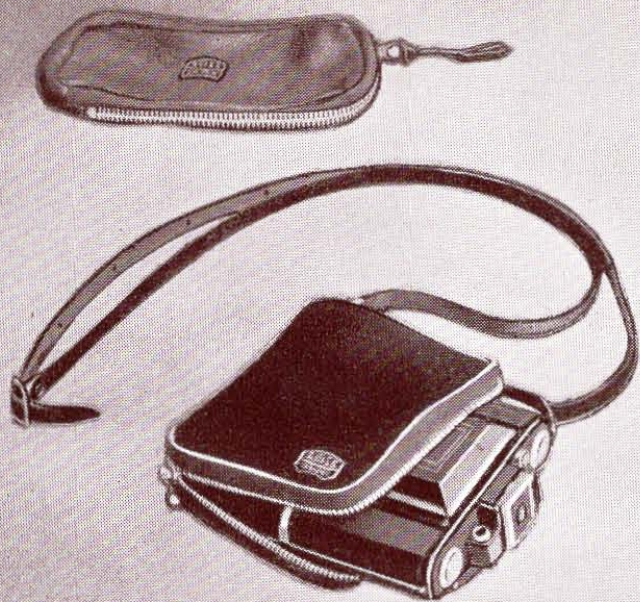
Lens.	Focal Length	Code No.	£ s. d.
Zeiss Sonnar $f/2$	$2\frac{5}{8}''$	5500	45 12 6

Movikon II 16 takes 50' or 100' spools.

Dimensions approx., $2\frac{3}{4}'' \times 6\frac{3}{4}'' \times 8''$.—Weight approx. $5\frac{3}{4}$ lb.

Lens	Focal Length	Code No.	£ s. d.
Zeiss Sonnar $f/1.4$	1"	5495	92 0 0





Camera Cases . . .

	2 $\frac{1}{4}$ " x 1 $\frac{3}{4}$ "	2 $\frac{1}{4}$ " x 2 $\frac{1}{4}$ "	3 $\frac{1}{4}$ " x 2 $\frac{1}{4}$ "	4 $\frac{1}{4}$ " x 2 $\frac{1}{4}$ "
	£ s. d.	£ s. d.	£ s. d.	£ s. d.
Nettar				
Brown leather case with lock for f/7.7 models	—	—	0 6 0	—
Brown leather case with lock	0 5 6	0 7 6	0 7 6	—
Soft leather purse case	0 5 0	0 7 6	0 7 6	—
Ikonta				
Brown leather case with lock	0 5 6	0 7 6	0 7 6	—
Ditto, velvet lined	0 10 6	0 12 6	0 12 6	—
Soft leather purse case	0 5 0	0 7 6	0 7 6	—
Super Ikonta				
Brown leather "Ever-ready" case	1 10 6	1 11 6	1 11 6	1 15 0
Soft leather "Ever-ready" case	1 0 0	1 5 0	1 0 0	—
Brown leather case (ordinary type)	0 10 6	0 15 0	0 12 6	0 14 0
Ikoflex				
Brown leather case, velvet lined	—	0 17 6	—	—
"Ever-ready" case	—	1 11 6	—	—
Tenax				
Stiff leather "Ever-ready" case, No. 1717/27...	2 1 0
Soft leather purse case with Zipp fastener, No. 1777/30			0 11 6
		Super Nettel	Nettax	
Soft leather purse with Zipp fastener	Code No.	£ s. d.	Code No.	£ s. d.
	1784/5	0 11 6	1777/10	0 11 6
Stiff "Ever-ready" leather case with Zipp fastener	1784/2	1 8 6	1794/2	1 19 0
Stiff leather "Ever-ready" case (lined)—	Contax II		Contax III	
	Code No.	£ s. d.	Code No.	£ s. d.
With Tessar f/3.5 and f/2.8 or Sonnar f/2, 2"	1787/2	1 19 0	1797/2	2 1 0
With Sonnar f/1.5... ..	1787/8	2 5 0	1797/8	2 7 6
Soft leather purse with Zipp fastener—				
With Tessar f/3.5 and f/2.8 or Sonnar f/2, 2"	1777/30	0 11 6	1777/34	0 11 6
With Sonnar f/1.5... ..	1777/32	0 11 6	1777/36	0 13 6
Contaflex Stiff "Ever-ready" leather case, lined			1786/2	2 0 0



Filters . . .

In order to obtain correct rendering of colours in monochrome, it is necessary to use a suitable filter over the camera lens, thus yellow filters are used with Orthochrom film for landscapes, still life and action subjects, while yellow-green and green filters fulfil a similar purpose with Panchrom film.

	Yellow*	Yellow-Green	Green
	£ s. d.	£ s. d.	£ s. d.
Slip-on Filters for Nettar			
$2\frac{1}{4}'' \times 1\frac{3}{4}''$ and $2\frac{1}{4}'' \times 2\frac{1}{4}''$ with $f/6.3$ lenses ...	0 9 6	0 12 6	0 13 6
† $2\frac{1}{4}'' \times 1\frac{3}{4}''$ and $2\frac{1}{4}'' \times 2\frac{1}{4}''$ with $f/4.5$ lens ...	0 10 0	0 14 0	0 15 0
$3\frac{1}{4}'' \times 2\frac{1}{4}''$ with $f/6.3$ and $f/7.7$ lenses ...	0 9 6	0 12 6	0 13 6
† with $f/4.5$ lens ...	0 12 0	0 15 6	0 16 6
§Screw over Filters for Ikonta			
$2\frac{1}{4}'' \times 1\frac{3}{4}''$ and $2\frac{1}{4}'' \times 2\frac{1}{4}''$...	0 14 0	0 17 6	0 18 6
$3\frac{1}{4}'' \times 2\frac{1}{4}''$...	0 15 6	1 0 0	1 0 6
§Screw over Filters for Super Ikonta II			
$2\frac{1}{4}'' \times 1\frac{3}{4}''$...	0 14 0	0 17 6	0 18 6
$3\frac{1}{4}'' \times 2\frac{1}{4}''$...	0 15 6	1 0 0	1 0 6
Slip-on Filters for Super Ikonta			
$4\frac{1}{4}'' \times 2\frac{1}{2}''$...	0 12 0	0 15 6	0 16 6
Special Slip-on Filters for Super Ikonta, $2\frac{1}{4}'' \times 2\frac{1}{4}''$			
Camera can be closed with Filter in position	0 12 6	0 16 6	0 17 0
Slip-on Filter for Ikoflex III ...	0 9 6	0 14 0	0 15 0
† Tenax ...	0 12 0	0 15 6	0 16 6
Screw-in Filter for Super Nettel ...	0 11 6	0 15 0	0 15 6
† Contax, Contaflex, and Nettax			
With 2" Tessar $f/3.5$ or $f/2.8$ and 2" Sonnar $f/2$	0 12 6	0 17 6	0 17 6
With Sonnar $f/1.5$...	0 19 0	1 3 6	1 4 0

*Yellow filters are supplied in three grades, light, medium and dark.

†With most Nettars with $f/4.5$ lenses, screw-over filters can also be used; the extra cost varies between 3/6 and 4/6 per filter. Please state which mount is required when ordering.

§Slip-on filters can be supplied, if required, at a reduction of 3/6 to 4/6. They do not, however, close up in camera.

†Prices are for slip-on filters for Contax, Contaflex, Tenax and Nettax; prices for screw filters on request.



Brilliant finder . . .

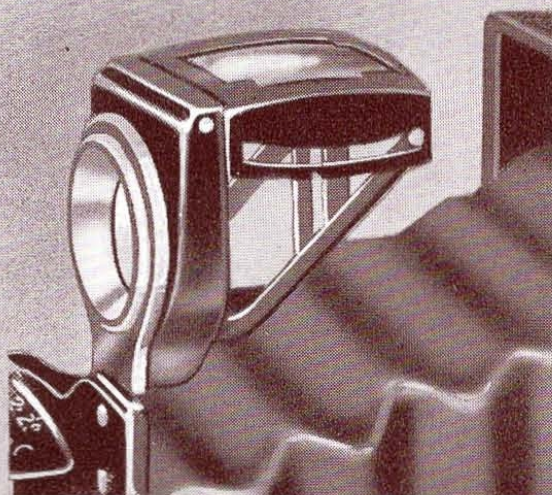
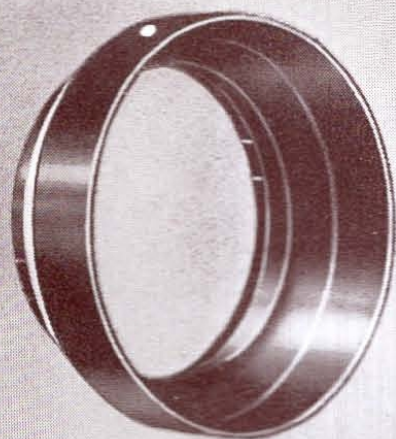
A large folding finder for waist-level pictures. With all current Ikonta and most Nettar cameras this finder slips on a plate provided on the lens front and is suitable only for use with cameras thus provided. It is detachable because cameras cannot be closed with it in position. For cameras $2\frac{1}{4}" \times 1\frac{3}{4}"$, $2\frac{1}{4}" \times 2\frac{1}{4}"$ and $3\frac{1}{4}" \times 2\frac{1}{4}"$ Price, including case, 12s. 6d.

Lens hoods . . .

Zeiss Slip-on Conical Lens Hoods.

The purpose of a lens hood is to keep unwanted light away from the lens; particularly where exposures are made against the light a lens hood gives brilliance to the negative. These lens hoods can be used in conjunction with slip-on filters, but not with screw filters, for which special hoods are in preparation.

	Code No.	£	s.	d.
27 mm. for all Nettar models with $f/7.7$ and $f/6.3$ lenses	1281/4	0	7	3
28.5 mm. for IkoFlex	1281/5	0	7	3
32 mm. for Ikonta and Super Ikonta $2\frac{1}{4}" \times 1\frac{3}{4}"$, Nettar $2\frac{1}{4}" \times 1\frac{3}{4}"$ and $2\frac{1}{4}" \times 2\frac{1}{4}"$ with $f/4.5$ lenses, and Ikonta $2\frac{1}{4}" \times 2\frac{1}{4}"$	1281/7	0	9	0
37 mm. for Nettar $3\frac{1}{4}" \times 2\frac{1}{4}"$ $f/4.5$ lenses, Tenax with 3" lens, Ikonta $3\frac{1}{4}" \times 2\frac{1}{4}"$ with Tessar and Novar $f/4.5$, also Super Ikonta $3\frac{1}{4}" \times 2\frac{1}{4}"$ and $4\frac{1}{4}" \times 2\frac{1}{2}"$...	1281/8	0	9	6
42 mm. for Contax, Nettax and Contaflex, with Tessars and Sonnar $f/2$, 2"	1281/9	0	12	0
Telescopic lens hood for Contax with Tessars and Sonnar 2"	1283/3	1	9	0
Screw-in lens hood for Contax, Contaflex, Super Nettel and Nettax with Tessar and Triotar 2" ...	1283/13	0	8	6
Screw-in lens hood for Sonnar $f/2$, 2"	1283/15	0	9	6
For Super Ikonta $2\frac{1}{4}" \times 2\frac{1}{4}"$, and Tenax with $1\frac{9}{16}"$ lens	1283/16	0	9	0





Taken on Zeiss Ikon Panchrom Film

Ikoflex with Triotar f/3.8,
1/100th second at f/8.



A Good Camera demands a Good Film

Use Zeiss Ikon film, which is a really good film possessing all the qualities which go to make the perfect negative material—speed, uniformity, latitude in exposure, fine grain, and it keeps well. A special top coating of gelatine helps to prevent telegraph wire scratches from ruining your pictures.

	Size.	Standard (26° Sch.)	Ortho. (28° Sch.)	Pan. (27° Sch.)	Pan. (31° Sch.)
A. ...	2½" × 1⅝"	1/-	1/2	1/6	—
B.2 ...	3¼" × 2¼"	1/-	1/2	1/6	1/6
D. ...	4¼" × 2½"	1/3	1/6	1/9	—

Contax Spools Daylight Loading

	36 Exp. (24 × 36 mm.)	12 Exp. (24 × 36 mm.)
	50 Exp. (24 × 24 mm.)	18 Exp. (24 × 24 mm.)
Panchrom (27° Sch.)	3/6	1/9
Panchrom (31° Sch.)	3/6	1/9

Prices of other sizes and film packs on application.