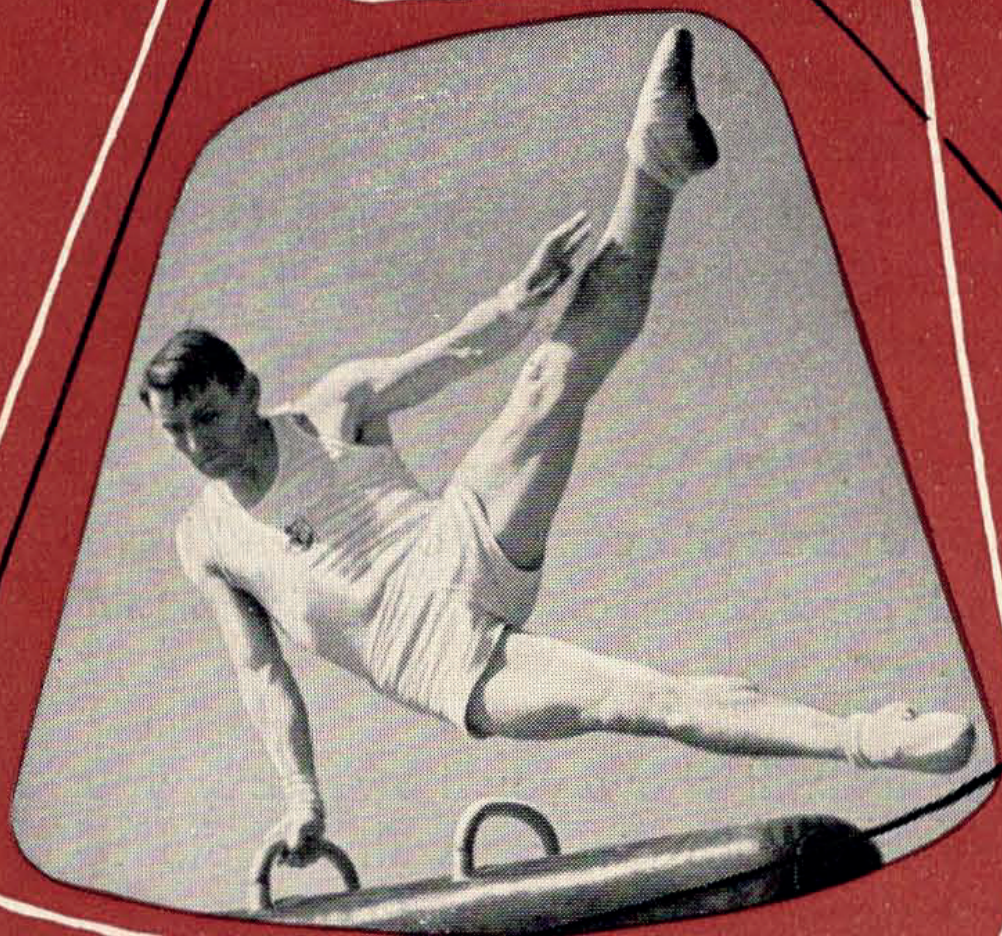


**The  
Small  
Accessories**  
for the

Kodak  
*Retina*



T H E R E T I N A S Y S T E M

## *The Means to Better Pictures . . .*

. . . are at your disposal, too. That final touch which distinguishes many pictures has quite a lot to do with the use of the so-called small accessories.

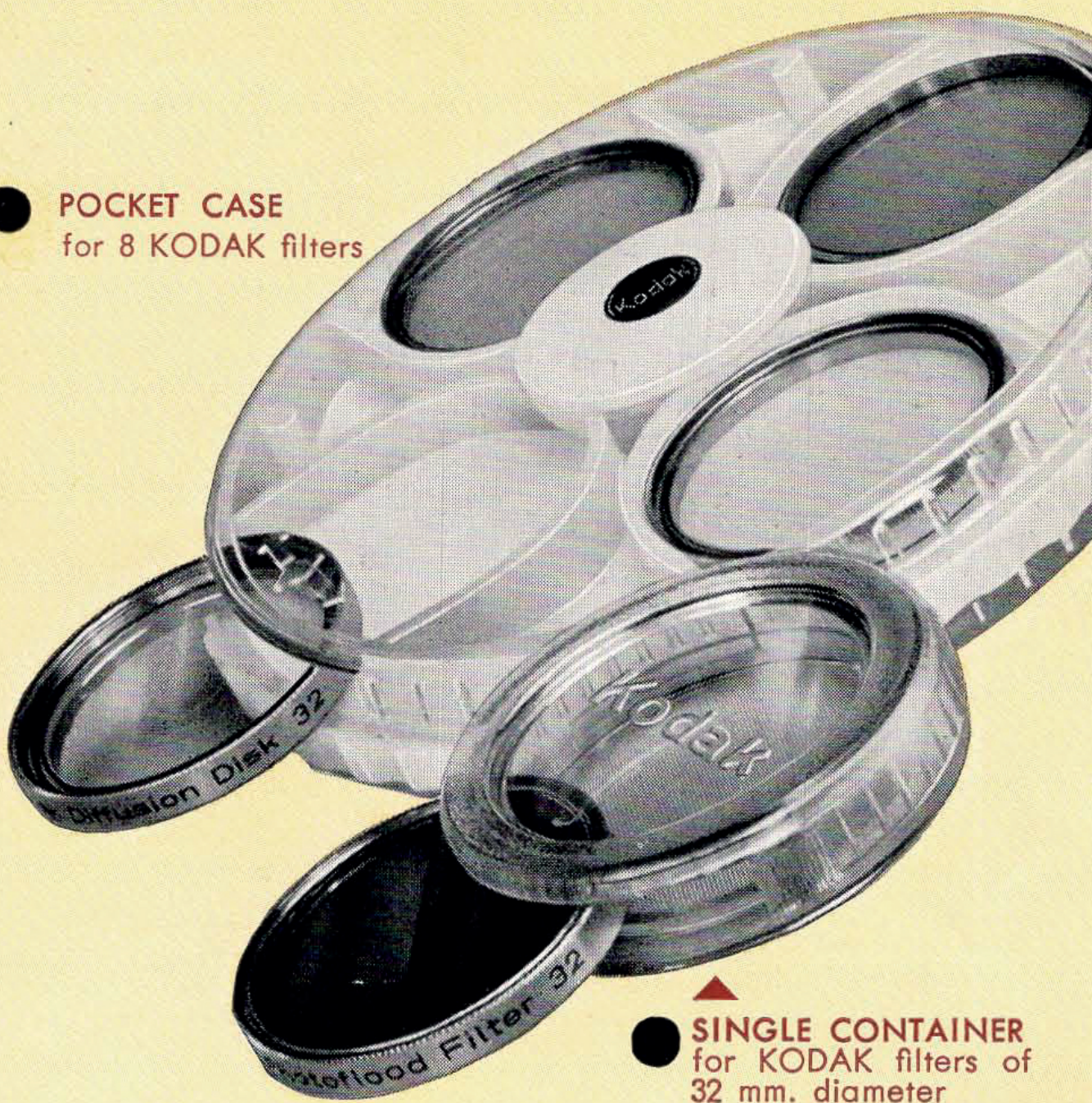
Any RETINA owner will want to get the most out of his camera in every way. That is understandable — and not at all difficult. Apart from the big outfits of equipment of the extensive RETINA system, such as the stereo attachment, micro-adapter, copying stand, close-up attachment, and the like, there are other important ancillary items. Used on the right occasions, they appreciably contribute to the quality of the picture.

These small accessories may be simple, but they are highly effective. The items available for the RETINA include: colour filters and KODACHROME filters; lens hoods; supplementary N-lenses; the RETINA frame finders models b and c; the optical multiple finder; the photo - electric KODALUX L exposure meter; as well as the practical containers of unbreakable plastic which hold the lens hood, filters, and interchangeable lenses always ready for use, yet completely protected against dust and dirt.

Obviously, KODAK have realized the importance of a complete camera outfit, and have devoted great care also to the important small items.

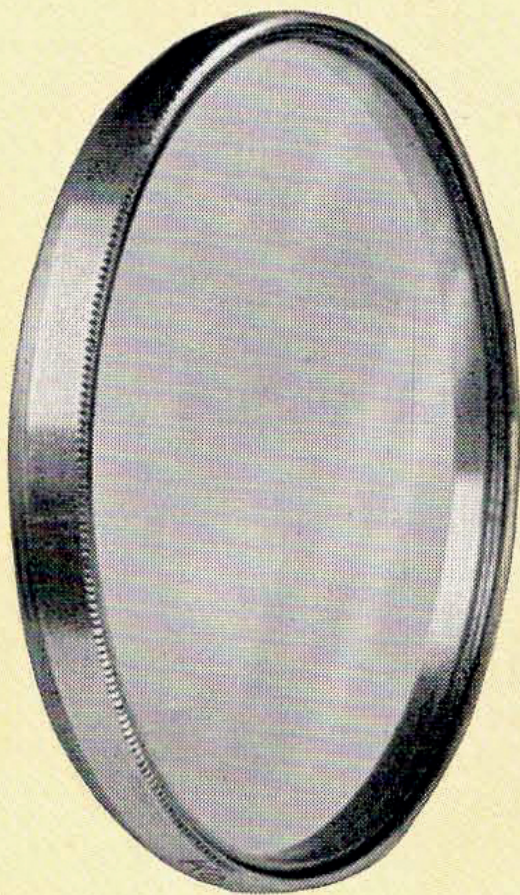
This leaflet will show you how easily you can improve your pictures with the aid of the precision-made RETINA accessories.

- **POCKET CASE**  
for 8 KODAK filters

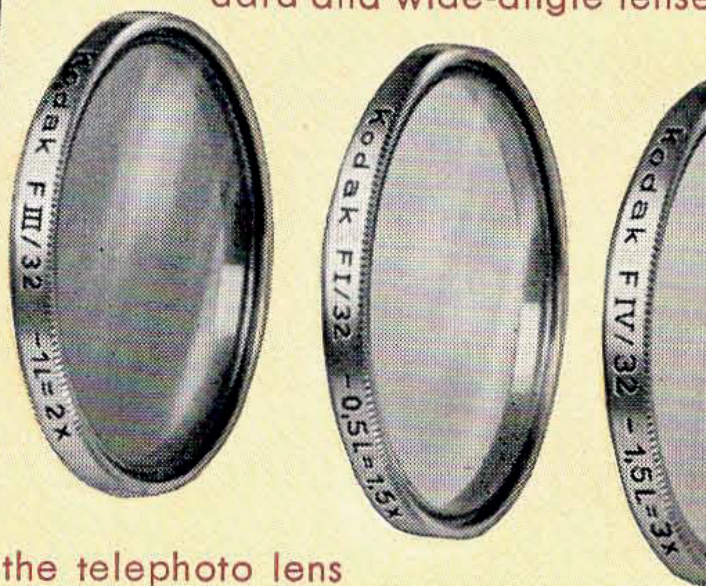


- ▲ ● **SINGLE CONTAINER**  
for KODAK filters of  
32 mm. diameter

- **SPECIAL CASE** ▲  
for removing, holding, and  
inserting the standard lens



- **KODAK FILTERS**  
32 mm. diameter, for the  
standard and wide-angle lenses



- **KODAK FILTERS**  
60 mm. diameter, for the telephoto lens



## KODAK-FILTERS

The **colour filters** in the form of correction and contrast filters play an important role in black-and-white photography. They help to modify tone values according to pictorial requirements. The colours and densities of the KODAK colour filters have been carefully chosen to suit all requirements of practical photography.

The light and medium **yellow filters** serve to separate the reproduction of white, pale blue, and yellow tones. The yellow filter, for instance, records blues darker. (Filter factors  $1\frac{1}{2}$  and 2 times respectively, reducing light value setting by  $\frac{1}{2}$  and 1 respectively.)

The **yellow-green** filter helps to differentiate the fine tone gradations of green foliage and the like, as it reproduces greens lighter. With shots of clouds and skies it acts similarly to the yellow filter. Reds become darker. (Filter factor 2 times, reducing light value by 1.)

The **orange filter** is definitely a contrast filter. Yellows and reds come out lighter, greens and blues darker. This filter helps to separate different colours of similar brightness value, such as reds and greens. (Filter factor 3 times, reducing light value by  $1\frac{1}{2}$ ).

The **blue filter** darkens its complementary colour, orange. It is specially suitable for shots where the skin tones and texture are to be emphasized. (Filter factor  $2\frac{1}{2}$  times, reducing light value by  $1\frac{1}{2}$ .)

The **red filter** acts as a contrast filter and strongly holds back blue and green tones. It is useful for many special effects; thus a blue, cloudless, sky comes out almost black. (Filter factor 7 times, reducing light value by 3.)

The **UV filter** (ultra-violet) cuts out ultra-violet radiation which may otherwise impair the definition of the image — especially at high altitudes and by the sea. (Requires no exposure increase.)

The **soft focus disc** spreads bright highlights beyond their outlines, especially with contrasty subjects such as against-the-light shots, and with portraits, and thus yields a pleasantly soft effect.

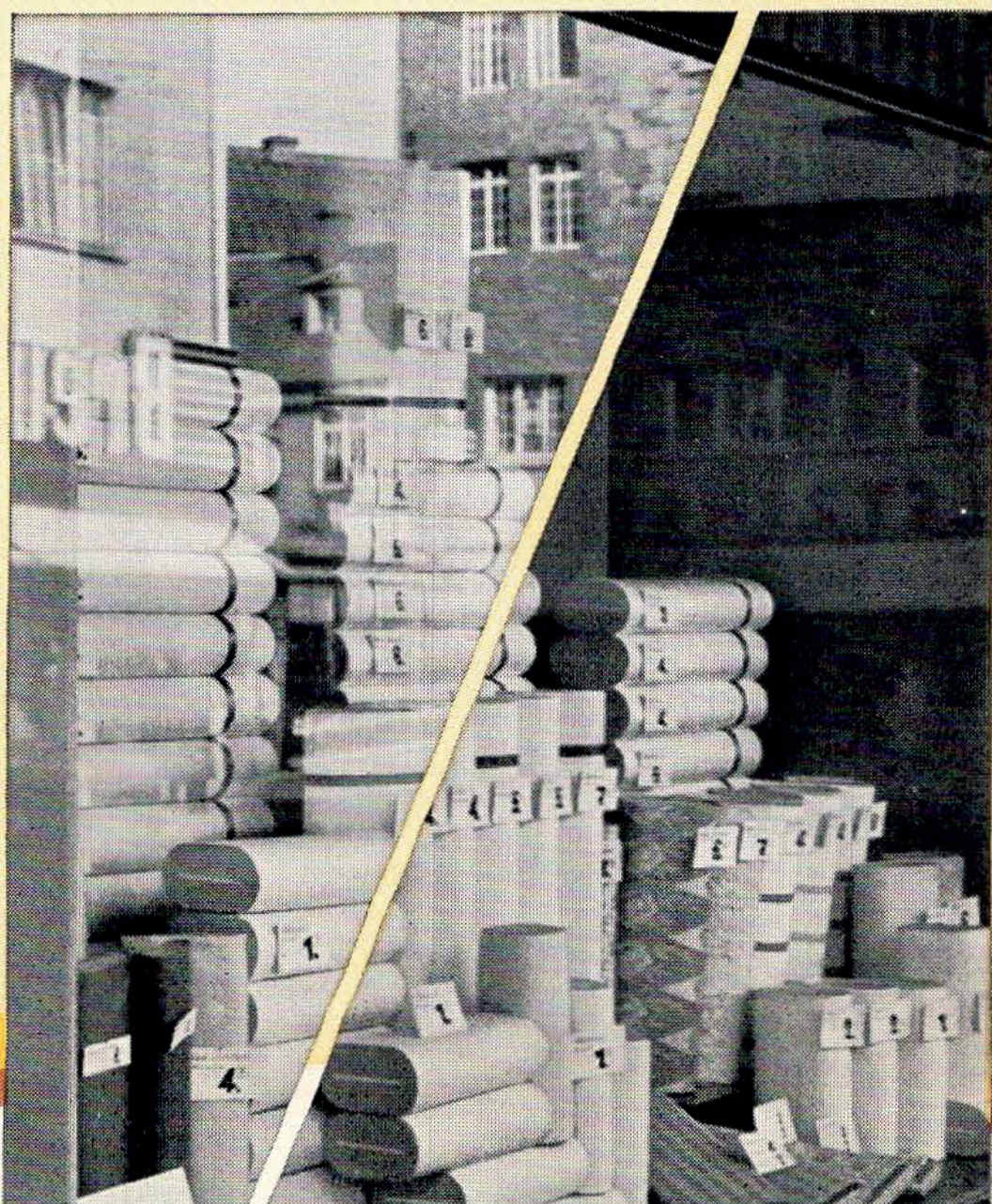
The **KODACHROME filters** are designed for colour photography on KODACHROME film.

The KODAK daylight filter permits the use of KODACHROME artificial light (Type A) film in daylight. It acts at the same time as a haze filter. (Filter factor  $1\frac{1}{2}$  times, reducing light value setting by  $\frac{1}{2}$ ).

Conversely, the KODAK Photoflood filter permits exposures by Photoflood illumination on KODACHROME daylight type film. (Filter factor 4 times, reducing light value by 2.)

The KODAK Skylight filter (haze filter) reduces the blueness of predominantly blue subjects in shots on KODACHROME daylight type film, and at the same time cuts any haze that may be present in distant views. (Requires no exposure increase.)

All the filters listed above are fitted in a screw-in mount 32 mm. in diameter and can be used with the standard and wide-angle lenses of the RETINA III c and II c, as well as with the RETINA I b, II a, I a (with f/2.8 lens), and the RETINETTE. For the RETINA telephoto lens, the medium yellow, yellow-green, and three KODACHROME filters are available in a 60 mm. mount.



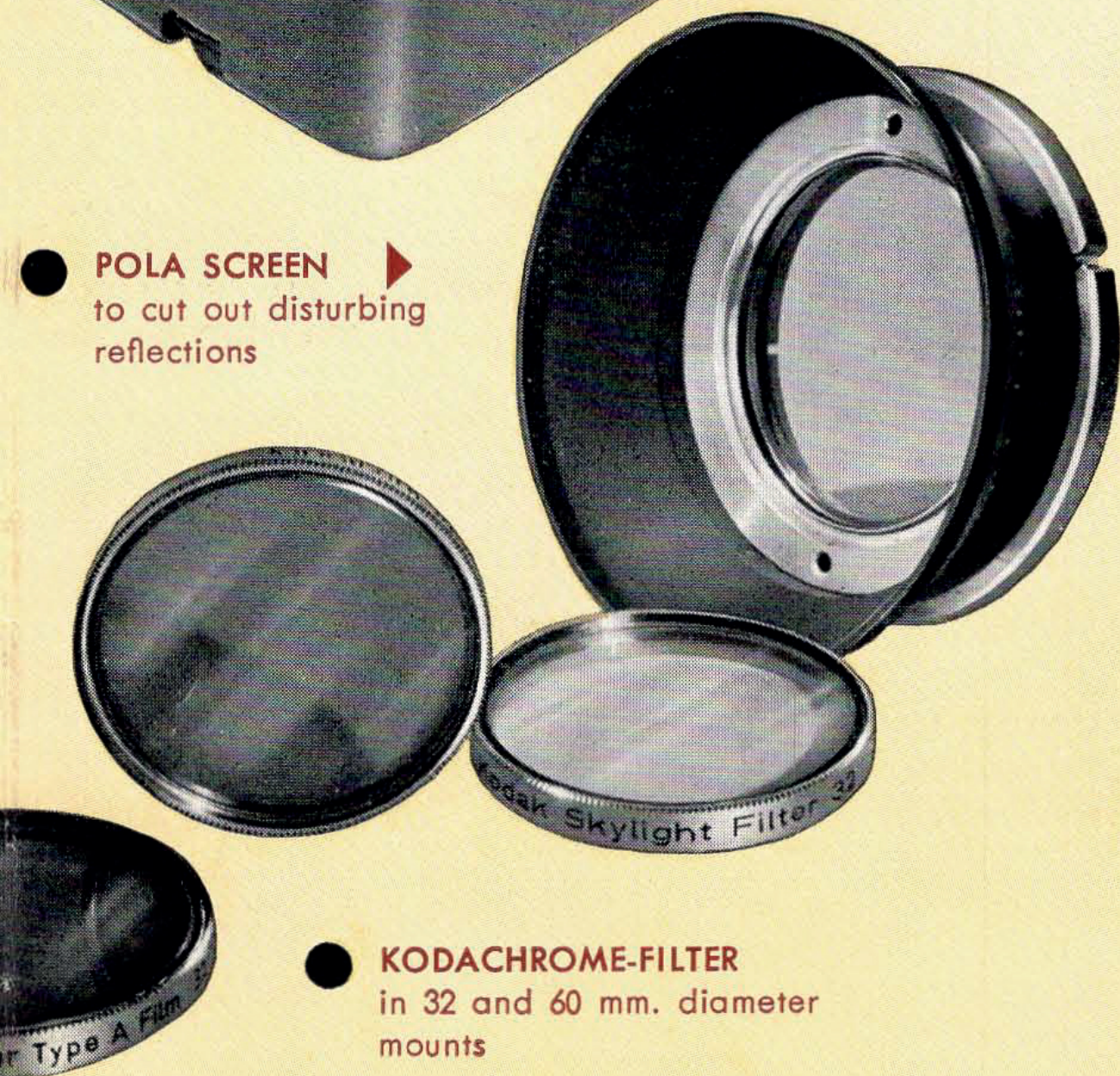
◀ Reflections i  
without (left)

- **LENS HOOD**  
with slip-on wide-angle extension hood



- **ACCESSORY CASE**  
for three 32 mm.  
filters and the  
lens hoods

- **POLA SCREEN** ▶  
to cut out disturbing  
reflections



- **KODACHROME-FILTER**  
in 32 and 60 mm. diameter  
mounts

in shop window,  
(left) and with (right) Pola screen

## **THE LENS HOOD**

### **and WIDE-ANGLE EXTENSION HOOD**

No experienced photographer will take pictures without a lens hood, for he knows that there is always disturbing stray light which may impair the brilliance of the negative. In addition, the lens hood protects the lens against drops of rain and water splashes as well as snow and similar undesirable influences.

The rectangular shape of the lens hood for the RETINA III c, II c, and I b is particularly effective in screening off disturbing reflections. It is firmly fixed in front of the standard lens of the camera by means of a bayonet mount. An extension hood may be slipped over the front for shots with the wide-angle lens.

## **CONTAINERS**

Various well-designed and useful containers of unbreakable plastic are available for the various filters and lens hood. Containers for single filters, the accessory case for three filters, lens hood and extension hood, and the pocket case for eight filters greatly simplify the carrying of these accessories. The special case for removing, keeping, and inserting the standard lens provides a really elegant and practical solution to the problem of what to do with the standard lens when taking wide-angle or tele shots.

## **THE POLA SCREEN**

The Pola screen appreciably helps to cut down reflections and glare from shiny non-metallic objects. This is of special advantage with many types of commercial photography and texture reproduction. At the same time the Pola screen — like the colour filters — serves to control the contrast of the subject.

## **THE KODALUX L**

Measure exposures — don't guess them if you want to make sure of properly exposed black-and white negatives, and especially of perfect colour shots. Accurate exposure is particularly important with colour, as exposure errors which would still be covered by the latitude of a black-and-white film may appreciably affect the colour reproduction. The KODALUX L meter guarantees correctly exposed black-and-white and colour pictures every time. It saves a great deal of annoyance over wrongly exposed and possibly unrepeatable shots, and it saves money by avoiding wasted film through under- or over-exposure. In that respect alone it soon pays for itself.

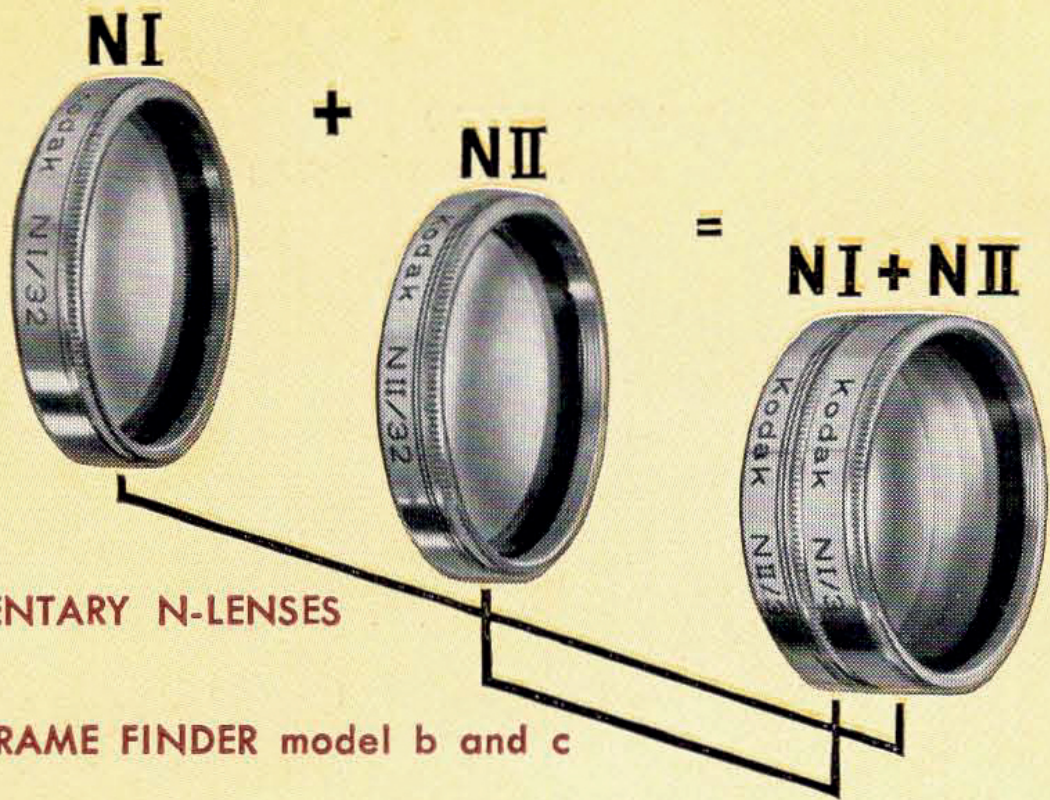
The KODALUX L is a highly reliable photo-electric exposure meter with a great measuring range. It shows the required light value (as well as aperture and shutter speed combinations for cameras without light value settings) under all lighting conditions, and can be used for incident light as well as reflected light measurement. For incident light readings you only have to fold down the diffusing screen hinged to the front of the honeycomb lens. The KODALUX L instantly gives the correct reading; there is no need for any calculation with either the incident or the reflected light method.

## **THE TELE CLOSE-UP LENS**

The T 1/60 close-up lens permits near shots with the telephoto lens, such as portraits, at distances between about 3½ and 6½ feet.

## **THE OPTICAL MULTIPLE FINDER**

The optical multiple finder is required for shots with the telephoto and wide-angle lenses. It shows the correct field of view for both these focal lengths (i. e. 3⅛ and 1⅜ inches).

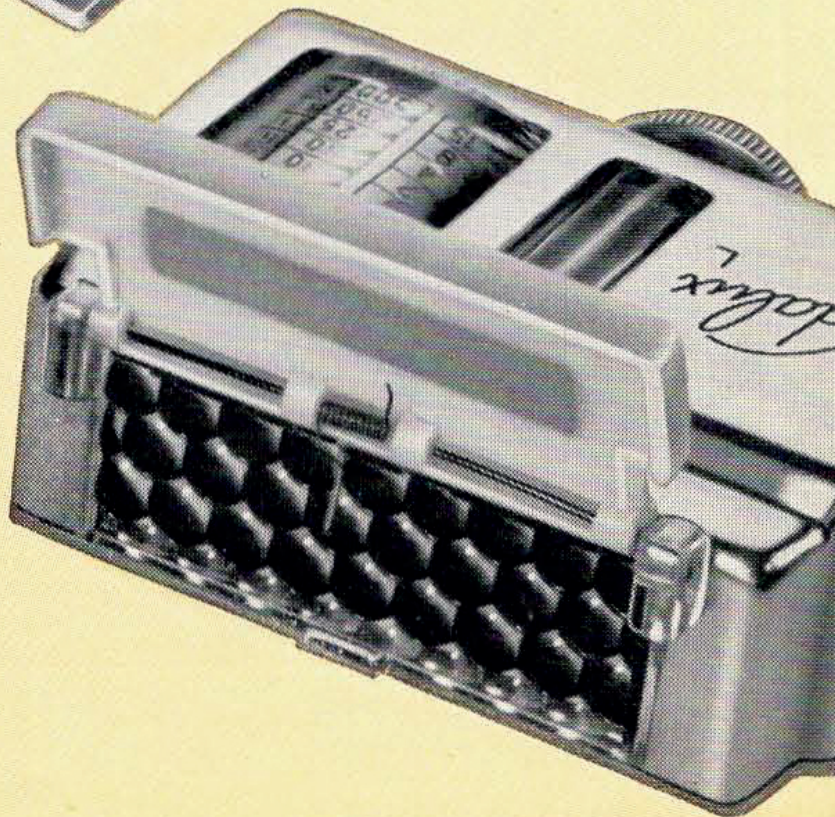


- SUPPLEMENTARY N-LENSES
- RETINA FRAME FINDER model b and c




- OPTICAL MULTIPLE FINDER for the 35 and 80 mm lens

- KODALUX L photo-electric exposure meter






## THE RETINA FRAME FINDERS



The RETINA frame finders models c and b are always useful for taking action subjects. The RETINA frame finder model c is intended exclusively for the RETINA III c and II c and has a swing-out frame which shows the limits of the field of view with the telephoto lens. The RETINA frame finder model b is for use with the RETINA Ib and the RETINETTE. Both models of the RETINA frame finder are also suitable for close-ups with the supplementary N-lenses, and will show the exact field of view, free of parallax, down to a distance of 12 inches.

## KODAK SUPPLEMENTARY N-LENSES



Nearer and nearer . . . With the aid of the supplementary N-lenses the RETINA can cover the fascinating field of close-ups. Only two N-lenses (N I and N II) are required to cover three close-up ranges between about 39 and 11½ inches (97 to 29 cm.), as measured from the subject to the plane of the film. For still nearer distances the more comprehensive close-up attachment with the supplementary R-lenses is available.



## **The small accessories for the RETINA cameras**

### **32 mm. Diameter Filters**

Light yellow medium yellow; each  
Yellow-green, orange, red, blue, UV; each  
KODAK Skylight filter (haze filter)  
KODAK Photoflood filter  
KODAK Daylight filter for KODACHROME Type A  
KODAK Soft-focus disc  
Pola screen for RETINA III c, II c, and I b  
Pola screen for RETINETTE

### **60 mm. Diameter Filters**

Medium yellow  
Yellow-green  
KODAK Skylight filter (haze filter)  
KODAK Photoflood filter  
KODAK Daylight filter for KODACHROME Type A

**Rectangular Lens Hood**, with bayonet fitting for  
RETINA III c, II c and I b  
Wide angle extension hood

**Plastic Accessory Case** to take lens hood, wide-angle  
extension hood, and three filters

**Pocket Case** for eight 32 mm. filters

**Special Case** for removing, holding, and inserting  
the 50 mm standard lens

**KODALUX L** photo-electric exposure meter

### **Supplementary Lenses**

N I, N II, each  
T 1/60 close-up lens

### **Finders**

RETINA frame finder model b for RETINA I b  
and RETINETTE  
RETINA frame finder model c  
for RETINA III c and II c  
Optical multiple finder for the interchangeable  
RETINA lenses

**K O D A K   A G   S T U T T G A R T   G E R M A N Y**