



Cine-Kodak

8 mm. and 16 mm.

**HOME MOVIE
EQUIPMENT**



Everyday life and happiness in and about the home . . . outdoor sports and camping thrills . . . marvelous vacation moments . . . they are all easy to film in black-and-white or full-color motion pictures with a Ciné-Kodak—the home movie camera that is as easy to operate as the simplest snapshot camera.

FRONT COVER ILLUSTRATION
FROM A KODACHROME ORIGINAL

*It's easy to make black-and-white or
full-color movies with any*

CINÉ-KODAK

...right from the start

EVERYONE seems busy making home movies. And why not? With a Ciné-Kodak it is both easy and inexpensive to take pictures of life as it actually is—in motion.

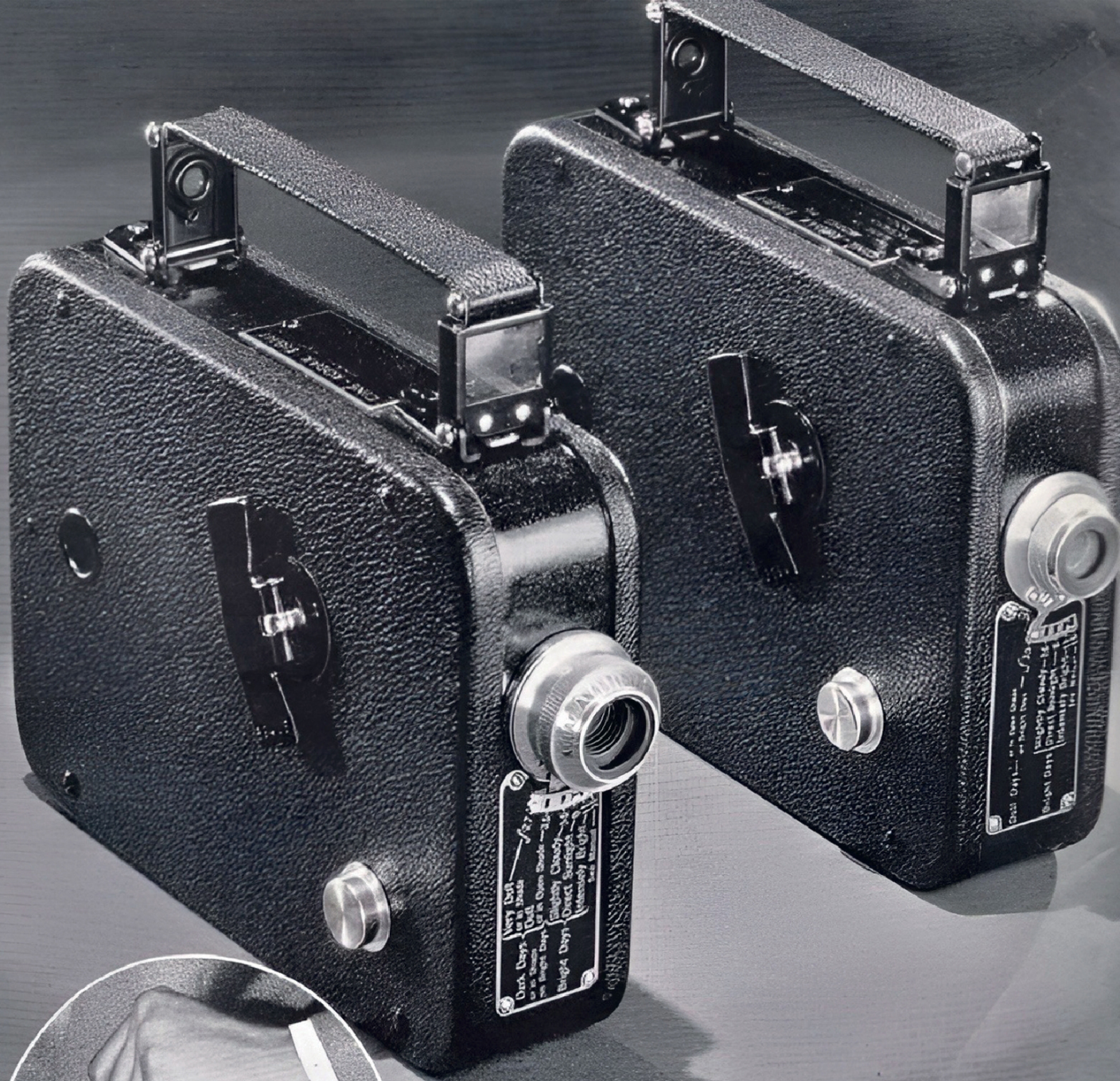
The fun is almost endless. For, though clicking a camera is packed with repeated enjoyment, a still greater thrill awaits the movie maker when he sees his family and friends flash with living reality on his own home movie screen.

On the following pages are described two types of Eastman-made motion picture equipment—Ciné-Kodaks and Kodascopes for 8 mm. film; Ciné-Kodaks and Kodascopes for 16 mm. film. Movie fans who have to watch expenses favor the cameras and projectors using the smaller size film. Those who want larger screen pictures prefer 16 mm. equipment. Whichever size you select, you can be sure it meets Eastman's exacting standards.

EASTMAN KODAK COMPANY, ROCHESTER, N. Y.

A combined price list and index will be found at the back of this catalog.

WHETHER you prefer 8 mm. or 16 mm. home movies, you can make and show your pictures better the all-Eastman way. Ciné-Kodaks, Kodascopes, and Ciné-Kodak Film are all designed to work together...are all backed by world-wide Eastman service.



FEATURES OF CINÉ-KODAKS EIGHT, MODELS 20 AND 25:

- Fixed-focus lenses that produce sharp pictures of all objects from a few feet distant to infinity.
- Exposure buttons that can be pressed down into locking position so operators may get into pictures themselves when the cameras

are placed on a steady support.

- Automatic film footage indicators that show clearly how much unexposed film remains.
- Full-vision eye-level finders combined with snap-back carrying handles.
- Small enough to carry in a pocket or good-sized handbag.
- Self-explanatory exposure guides.
- Securely fastened winding keys.

For low initial cost and economy of operation, Eastman offers you

CINÉ-KODAK EIGHT

MODELS 20 AND 25

IF you have been steering clear of movie making because of cost, take a tip from thousands now enjoying this fascinating hobby and get a Ciné-Kodak Eight, Model 20 or 25—two full-fledged movie cameras that are not only inexpensive to buy, but cost surprisingly little to operate. Here is why:

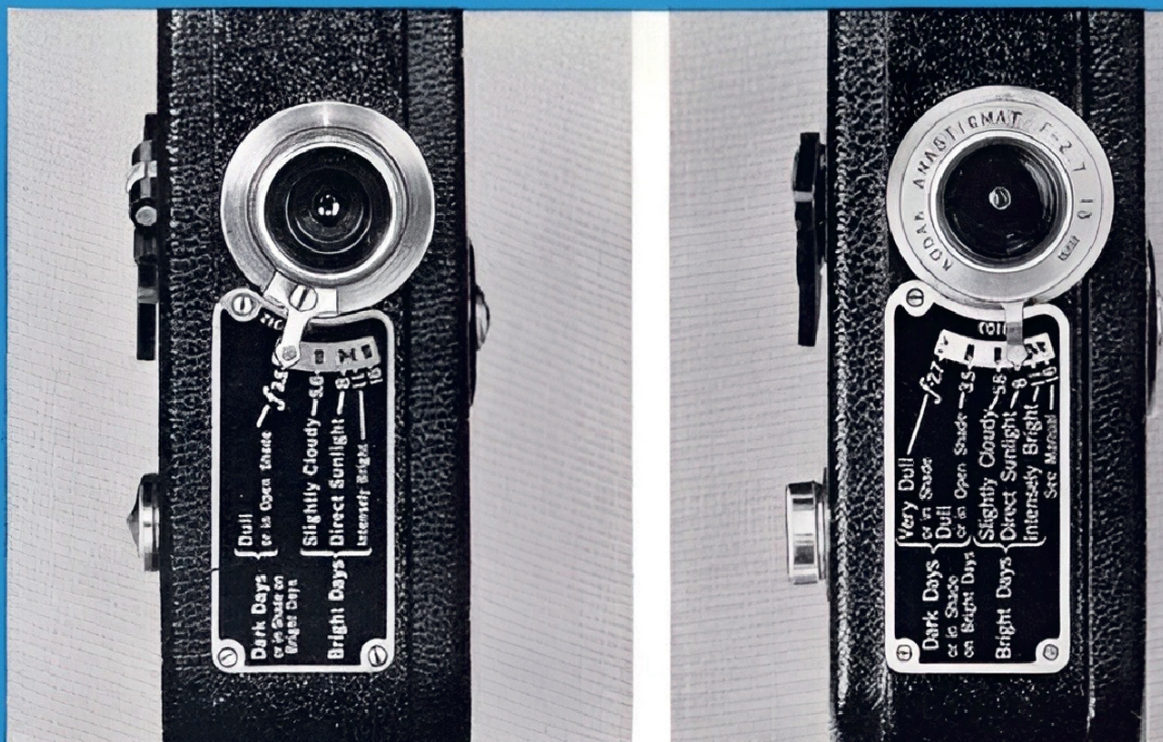
On a single roll of low-cost Ciné-Kodak Film, any Ciné-Kodak Eight will easily make from 20 to 30 movie scenes, each as long as the average scene in the newsreels. This number of shots per roll brings the cost of black-and-white Ciné-Kodak Eight movies down to less than a dime a shot; makes the per-scene cost of full-color movies only a few cents more.

Your only cost for Ciné-Kodak Film is the original price per roll, for Eastman processes your exposed films free of charge; returns them to you prepaid within the country in which they are processed.

3

RIGHT ►

Except for lens equipment, Ciné-Kodaks Eight, Models 20 and 25, are identical. The "20" has an *f*.3.5 lens; the "25" comes equipped with a Kodak Anastigmat *f*.2.7 lens. The increased speed of the latter lens makes it easier to get good movies under less ideal conditions.





FEATURES OF CINÉ-KODAK EIGHT, MODEL 60:

Focusing Kodak Anastigmat $f.1.9$ lens that focuses accurately on all objects from 2 feet to infinity. Lens is easily interchangeable with a $1\frac{1}{2}$ -inch telephoto lens.

- Automatic film footage indicator.
- Dual-purpose carrying handle.
- Exposure button which can be pressed down into locking position.
- Two-toned grey cowhide covering and brilliant, chromium fittings; engine-turned interior.
- Built-in, easy-to-understand exposure guide.
- Securely fastened winding key.

If you want economy of operation plus versatility, you'll find both in

CINÉ-KODAK EIGHT

MODEL 60

CINÉ-KODAK EIGHT, Model 60—the de luxe member of the family of economical 8 mm. movie makers—uses the same low-cost Ciné-Kodak black-and-white and full-color Kodachrome Film as Ciné-Kodaks Eight, Models 20 and 25. Its ultra-fast Kodak Anastigmat *f*.1.9 lens, however, opens up new fields of movie making beyond the range of slower lenses.

Model 60 gets more of those one-in-a-million shots for its owners. It's a camera you'll be proud to own and one that makes movies you'll be proud to show. Check the advantages of Ciné-Kodak, Model 60, pictured and listed below and on the page opposite. Ask your Ciné-Kodak dealer to show this camera to you. He will be glad to put it through its paces.

Once you see Ciné-Kodak, Model 60, you will readily understand why movie makers rate it *first* among the three available 8 mm. Ciné-Kodaks.

5



With the "60" you are always ready for the unexpected.



You don't have to put the "60" to bed at sundown.



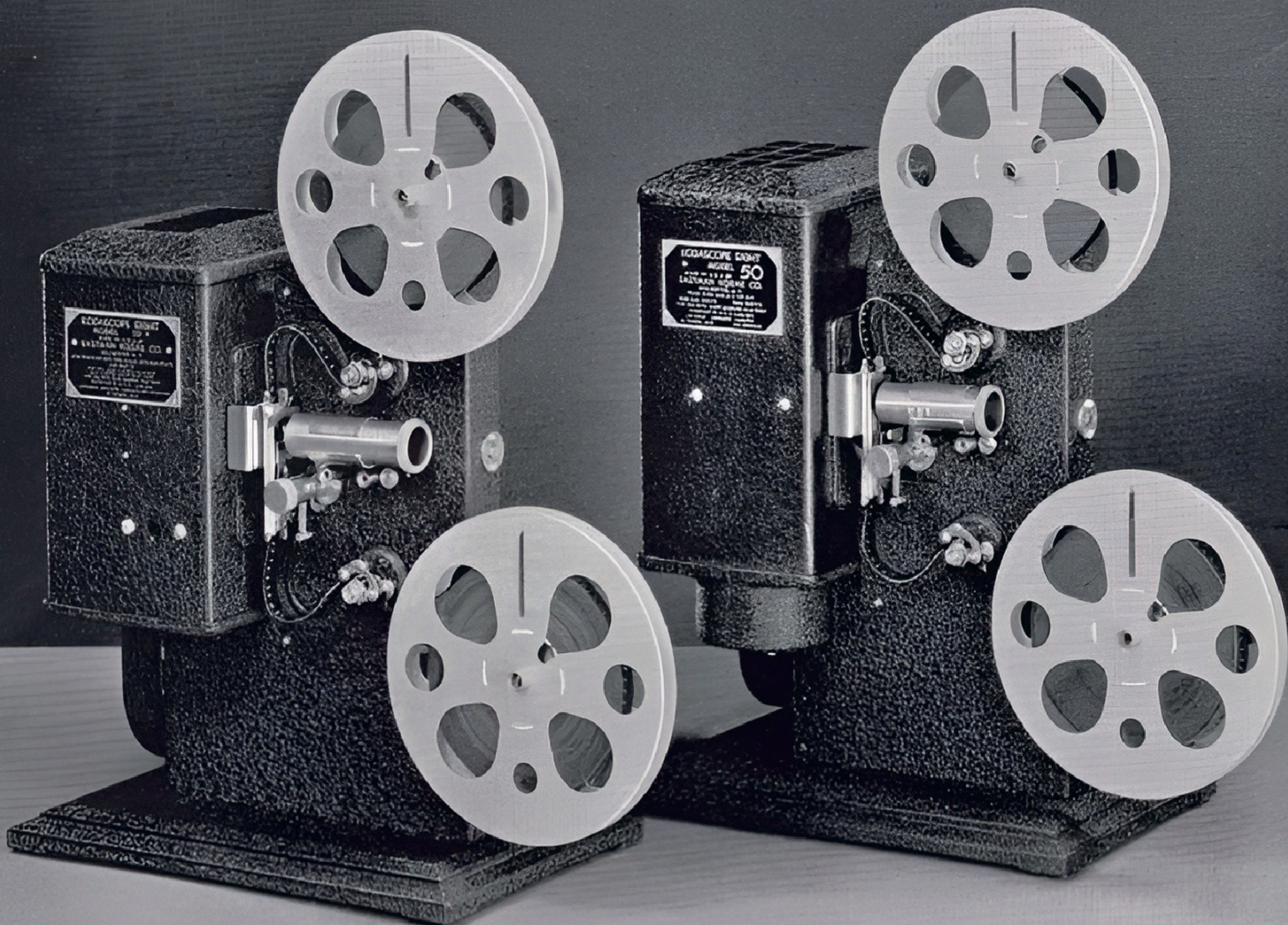
Movies indoors are easy, too, with the versatile Model 60.

*To show your 8 mm. home movies at their best
you will want an*

EASTMAN-MADE PROJECTOR

SHOWN here are two low-cost Kodascopes Eight that may be depended upon to give satisfactory projection performance. Check their features, one against the other, then select the projector best suited to your needs. You will find both especially simple to operate. Threading is only a matter of seconds. . . starting, a matter of pressing a switch. And after a reel has been projected, you need only change a spring belt and snap on a switch to rewind the film at lightning speed.

6





◀ LEFT

It is heaps of fun to shoot movies... it is even more fun to see the pictures you make yourself spring to life in black-and-white or full color on projection screens in your own living room.

KODASCOPE EIGHT, *Model 20*

An efficient and well-constructed Eastman-made projector built to sell at an amazingly low price within reach of all. Motor driven. Still picture attachment makes possible stopping of the projector to observe "stills" of especial interest. Motor rewind whisks film back onto supply reel in a few seconds. Operates on 60-cycle, 105- to 125-volt A. C. lines. Recommended for projecting pictures on very modest-sized screens only.

KODASCOPE EIGHT, *Model 50*

Priced only slightly higher than Kodascope, Model 20, the "50" is well worth the difference in cost. Its features include: a 300-watt coil-coil projection lamp, making possible the showing of brilliant movies on screens up to 36 inches wide... an efficient fan and ventilating system... extremely simple focusing, framing, and threading... motor drive... motor rewind. Operates on either D. C., or A. C. 25- to 60-cycle, 100- to 125-volt lines.

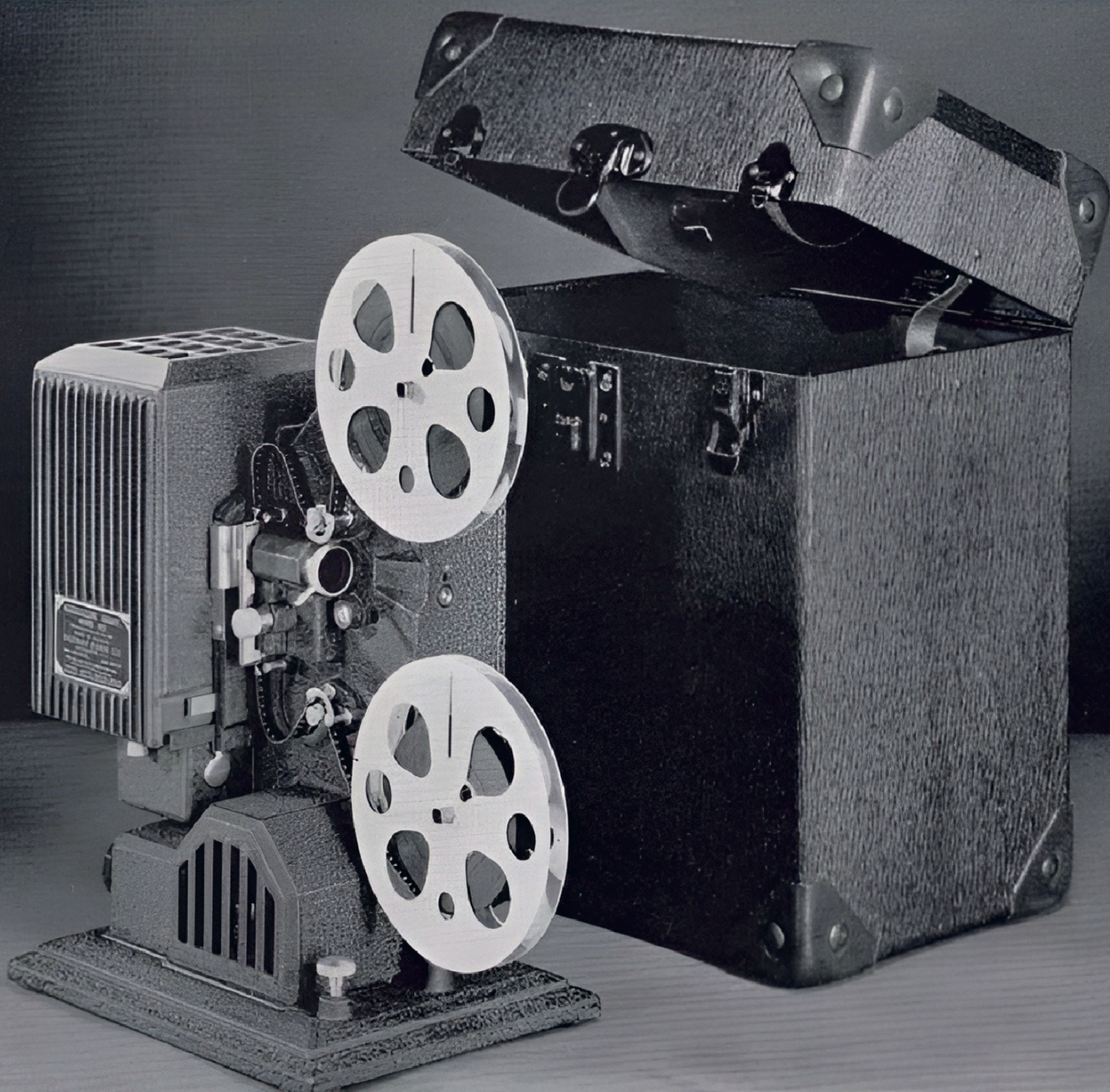
*For ultra-fine 8 mm. projection
performance be sure to see*

KODASCOPE EIGHT, MODEL 80

TOPMOST among Eastman-made 8 mm. home movie projectors is Kodascope Eight, Model 80. The many exceptional qualities, the unusually brilliant performance record, and the beauty of the "80" make it the preferred projector of those who want only the very best.

Across the page are listed the features that make Kodascope Eight, Model 80, the favorite with amateur motion picture enthusiasts desiring projection results *par excellence*.

8



RIGHT ►

Can you imagine any greater thrill than that of seeing movies you have made yourself projected in your own living room? You'll like your pictures especially well if they are projected with a Kodascope Eight, Model 80.



FEATURES OF KODASCOPE EIGHT, MODEL 80:

- Equipped with a fast $f.1.6$ projection lens and 300-watt coil-coil lamp for producing unusually sparkling screen pictures on screens up to 30 x 40 inches.
- Available as an accessory is a 300-watt bi-plane filament lamp which increases illumination 15 per cent assuring ample brilliance for projection screens up to 36 x 48 inches.
- Motor drive and rapid rewind . . . "still" picture attachment . . . simplified framing and focusing . . . convenient elevating control . . . efficient cooling system . . . beautiful crinkled metal finish . . . quiet operation . . . quick threading . . . film gate easily removed for cleaning.
- Supplied with a handsome, sturdily built carrying case, providing protection and easy portability of the Kodascope as well as storage space for the following accessories furnished as standard equipment: Two 200-foot reels, film can, extra belt, oiling and splicing outfits.
- Operates on D. C., or A. C. 25- to 60-cycle, 100- to 125-volt electric lines.



Ciné-Kodak, Model E, is new in design, new in appearance. "Feed" and "take-up" film reels work in one plane. They are angled forward to make sighting through the finder of the "E" simple even for a person wearing a wide-brimmed hat.



The "E's" dual-purpose finder shows both the image being filmed and the film consumed.

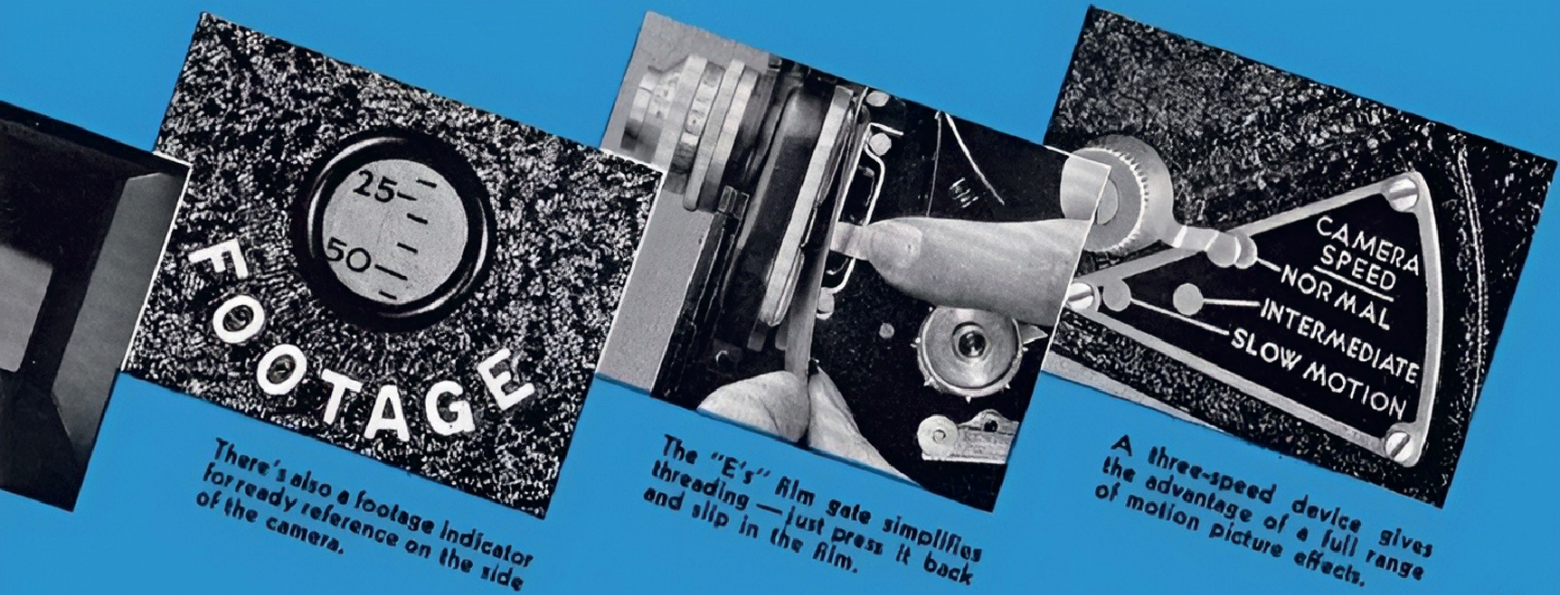
*For high camera quality at low cost,
take a look at the 16 mm.*

CINÉ-KODAK, MODEL E

THANKFUL are thousands of home movie enthusiasts that Eastman introduced Ciné-Kodak, Model E. Until announcement of this Eastman-made camera, a lot of folks felt that the price of a quality 16 mm. motion picture camera was a bit beyond their reach. That's all changed now. Ciné-Kodak, Model E, is a full-fledged 16 mm. movie maker of exceptionally high quality that sells at a surprisingly low price. Take a good look at the "E" at your Ciné-Kodak dealer's. We know that like others you, too, will agree that it is a lot of camera for very little money.

FEATURES OF CINÉ-KODAK, MODEL E:

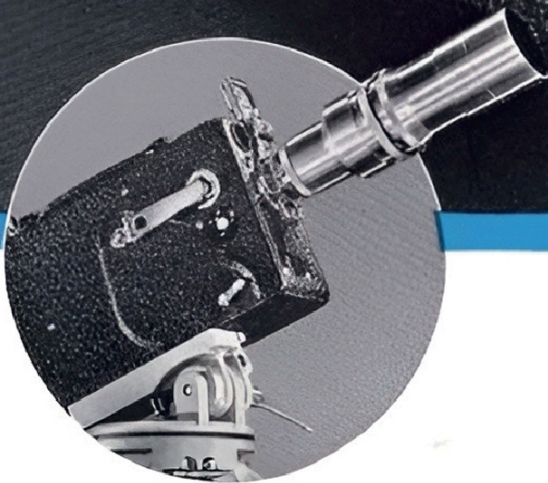
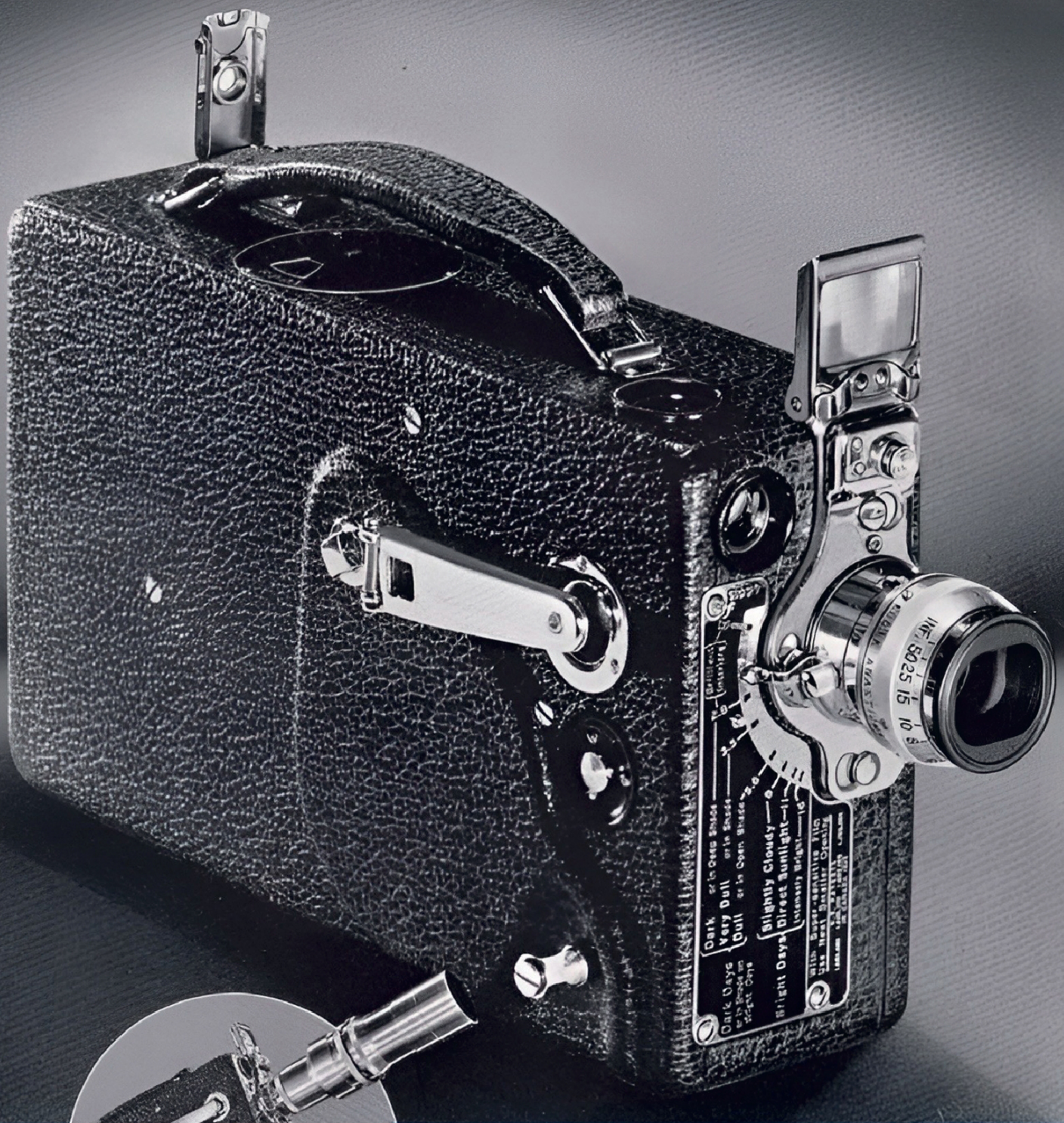
- Fixed-focus precision-made Kodak Anastigmat $f.3.5$ lens.
- Three speeds—Normal, Intermediate, Slow Motion—16, 32, or 64 frames per second.
- Long-running spring motor and secured winding handle.
- Generous film capacity—loads with 50- or 100-foot rolls of 16 mm. black-and-white, and full-color Kodachrome films.
- Exposure lever may be either pressed down for a few seconds' exposure, or locked into taking position for scenes a half minute or more in length.
- Simplified built-in exposure guide, and automatic film footage indicator.
- Simplified gate and ample finger room around sprocket—easy to load and unload.
- Attractive and long-wearing black crackle finish on die-cast aluminum case.



There's also a footage indicator for ready reference on the side of the camera.

The "E's" film gate simplifies threading—just press it back and slip in the film.

A three-speed device gives the advantage of a full range of motion picture effects.



FEATURES OF CINÉ-KODAK, MODEL K:

- Kodak Anastigmat $f.1.9$ lens easily interchangeable with six telephoto lenses and a 15 mm. wide-angle lens.
- Full-view eye-level finder plus a

reflecting waist-height finder for analyzing composition and for filming objects close to the ground.

- Two speeds—Standard and Half—16 or 8 frames per second.
- Easily read footage indicator showing how much unused film remains.
- Loads with 100-foot or 50-foot rolls of 16 mm. black-and-white, and full-color Kodachrome films.

For a 16 mm. movie camera of unusual simplicity and ability, Eastman offers you

CINÉ-KODAK

MODEL K

THOUSANDS of home movie enthusiasts the world over are making movies with Ciné-Kodak, Model K. They like the "K" because it is compact, but not complicated. They like it because it has a 100-foot film capacity, yet is light in weight.

An exposure guide on the front of Ciné-Kodak, Model K, tells you at a glance just how to set the camera for getting good pictures on dull as well as bright days, in deep shade as well as in brilliant sunlight.

If you want a modestly priced 16 mm. movie camera that will give you faithful performance, it will pay you to inspect the "K" at your dealer's.

Available for Ciné-Kodak, Model K, are five different Ciné-Kodak Films (see pages 20 and 21). These films make it easy to shoot black-and-white or full-color Kodachrome movies under a wide variety of light conditions.

13



Capturing action like this is easy with the "K."



Good outdoor shots at night are easy, too.



The "K" makes movies indoors as well as out.



**FEATURES OF
MAGAZINE CINÉ-KODAK:**

- Effortless loading—the film comes in magazines. Footage meter on magazines shows how much film is left.
- Kodak Anastigmat *f*.1.9 lens, interchangeable with seven accessory

- lenses—six telephoto, one wide-angle.
- Eye-level finder easily adjusted for viewing the fields covered by the standard as well as accessory lenses.
- Three speeds—Normal, Intermediate, Slow Motion—16, 32, or 64 frames per second.
- Pulsating button for keeping you posted on scene length.
- Automatic shut-off for motor assuring uniform exposure for each scene.

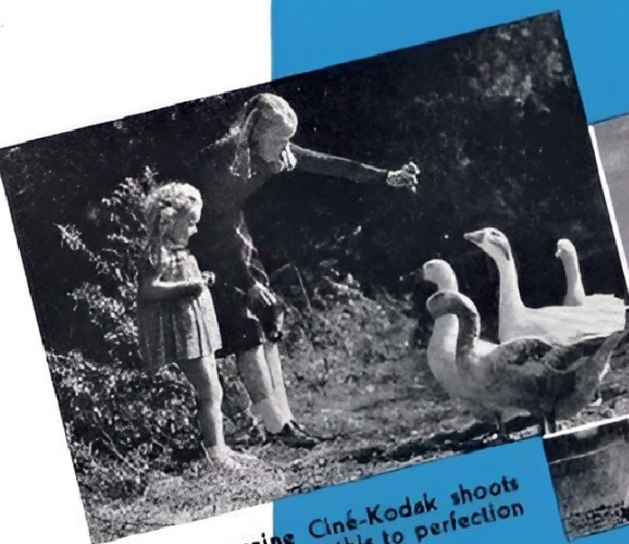
The FAVORITE 16 mm. motion picture camera of both men and women is

MAGAZINE CINÉ-KODAK

MAGAZINE Ciné-Kodak is the simplest of all Eastman-made movie cameras. It is so designed you can load it with your eyes shut. No threading—you slip in a black-and-white or full-color Kodachrome film magazine, close the cover, and shoot. Wholly or partly exposed magazines may be put in or taken out of the camera at will, without the need of wasting even a single frame. A footage indicator, which registers on the magazine whether it is in or out of the camera, tells you how much unused film remains.

Check the features of this camera as pictured and listed here. See it at your dealer's. Note especially its compactness... the ease with which it handles... its convenient shape... its exceptional versatility. Any way you look at it, Magazine Ciné-Kodak is 'way out front. It's a home movie camera that combines the greatest number of usable features in the smallest possible space.

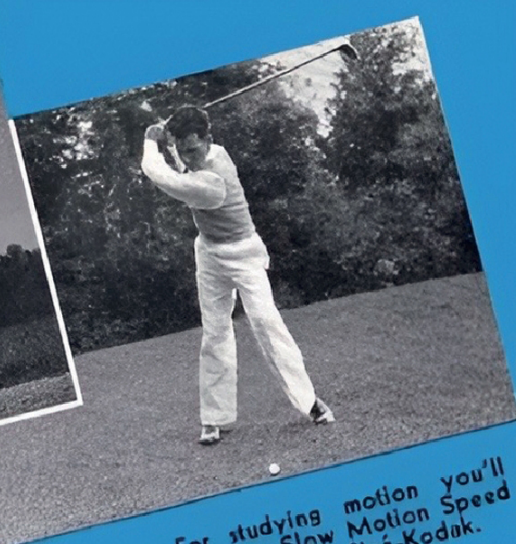
15



Magazine Ciné-Kodak shoots subjects like this to perfection at Normal Speed.



You'll appreciate the camera's Intermediate Speed for shots of this type.



For studying motion you'll like the Slow Motion Speed of Magazine Ciné-Kodak.

For a high-quality 16 mm. projector at an astonishingly low price, be sure to see

KODASCOPE, MODEL EE

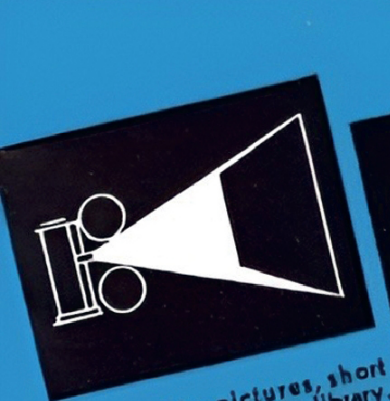
HERALDED as the outstanding value in the low-cost 16 mm. projector field, Kodascope EE, Series II, is not only up to the minute in design and outstanding in performance, it is extremely versatile as well. Whether you want big pictures in cramped quarters, average-size pictures under average conditions, or extra-size pictures in class, church, or club-rooms, you will find the "EE" quite capable of meeting your needs.

Following are a few of the features that make this conservatively priced, "tailor-made" projector decidedly unique: a choice of five lenses—1-inch *f*.2.5, 2-inch *f*.2.5, 2-inch *f*.1.6, 3-inch *f*.2.0, 4-inch *f*.2.5—and three lamps—400-, 500-, and 750-watt... permanently lubricated major bearings... extremely cool and quiet operation... tandem pull-down... rapid re-wind... simplified threading, framing, and focusing... carrying handle.

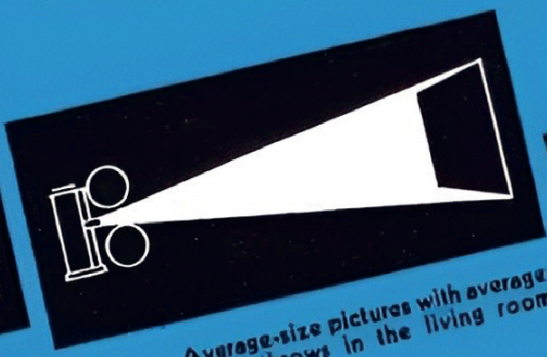
A 30-degree tilting device of the projector's pedestal base permits the projection of pictures up or down to a screen on floor or table.

The pedestal base of the Model EE is made to fit over the top of the carrying case handle, thereby making possible the use of the case as an emergency projection stand.

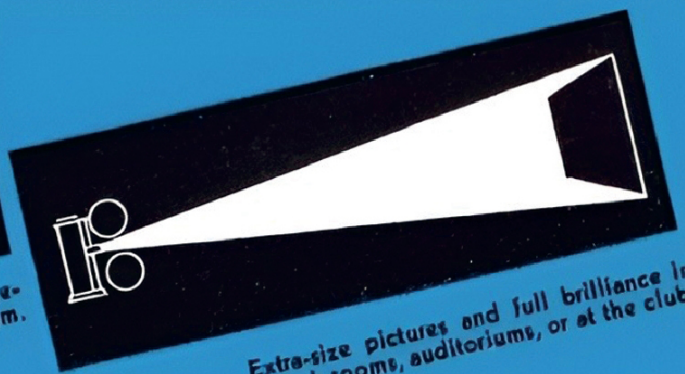
Kodascope, Model EE, operates on either D.C., or A.C. 25- to 60-cycle, 100- to 125-volt lines.



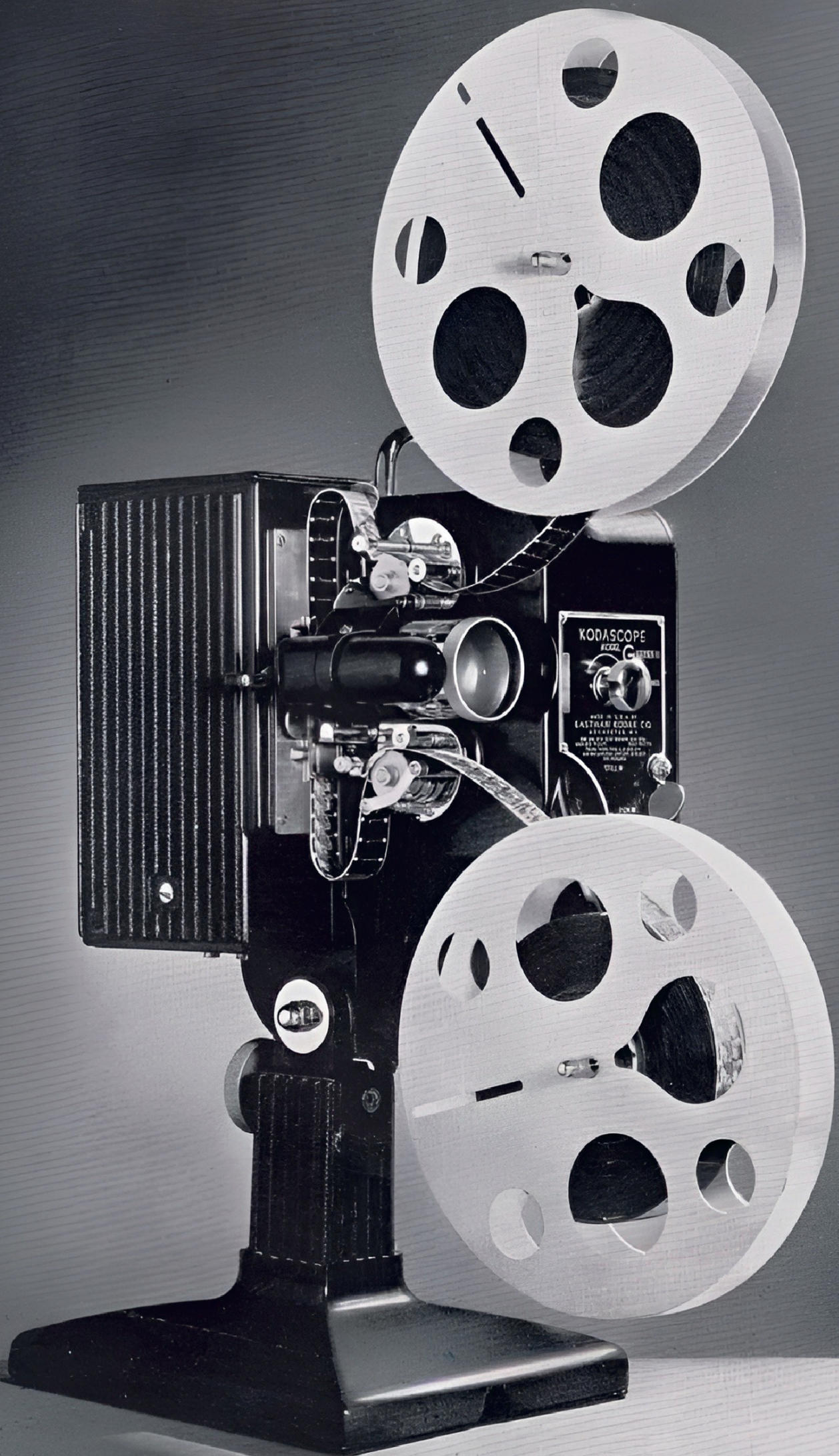
Big pictures, short throws, in the library.



Average-size pictures with average-length throws in the living room.



Extra-size pictures and full brilliance in church rooms, auditoriums, or at the club.



Simplicity, efficiency, and trouble-free operation are only a few of the features of

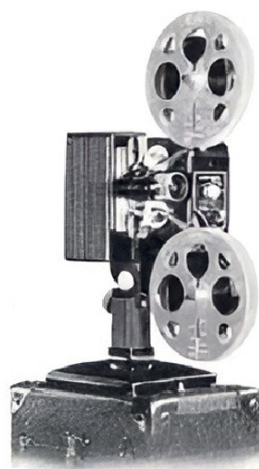
KODASCOPE, MODEL G

NEWEST of Eastman projectors for "tailor-made" projection is Kodascope, Model G, Series II—choice of business men, educators, professional men, and movie enthusiasts seeking simplicity, versatility, efficiency, and dignity of appearance at a moderate price.

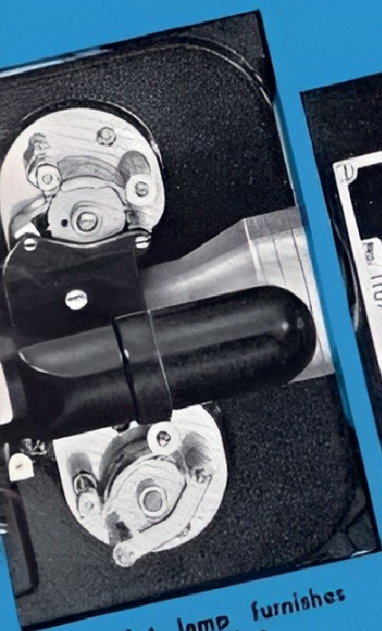
So simple is its control system that even the inexperienced operator can obtain excellent results from the very beginning.

You must see this projector in operation to appreciate its many admirable qualities. In addition to the performance points illustrated below, Kodascope G's outstanding features include: a choice of five lenses—1-inch *f*.2.5, 2-inch *f*.2.5, 2-inch *f*.1.6, 3-inch *f*.2.0, 4-inch *f*.2.5, and three lamps—400-, 500-, and 750-watt...reverse projection... "still" picture adjustment...cool, quiet operation...high-speed rewind...prelubricated bearings...accurate, positive control of focus and framing...easily accessible parts...carrying handle.

Kodascope G operates on either D.C., or A.C. 25- to 60-cycle, 100- to 125-volt lines. Designed to fit securely atop its carrying case for impromptu set-ups.



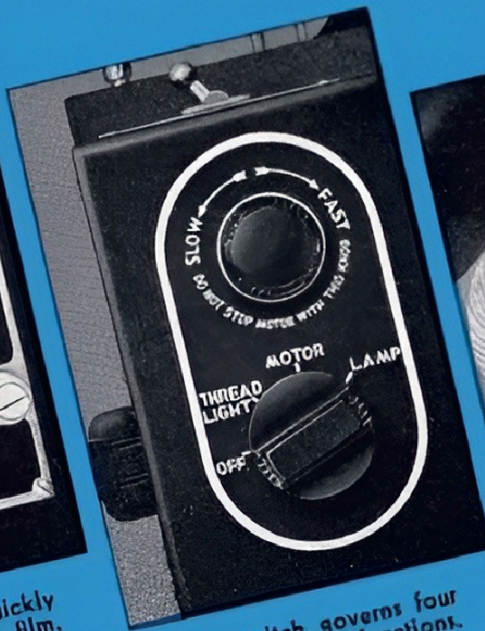
19



A pilot lamp furnishes light for threading.



A threading knob quickly clears the gate for film.



One switch governs four major operating functions.



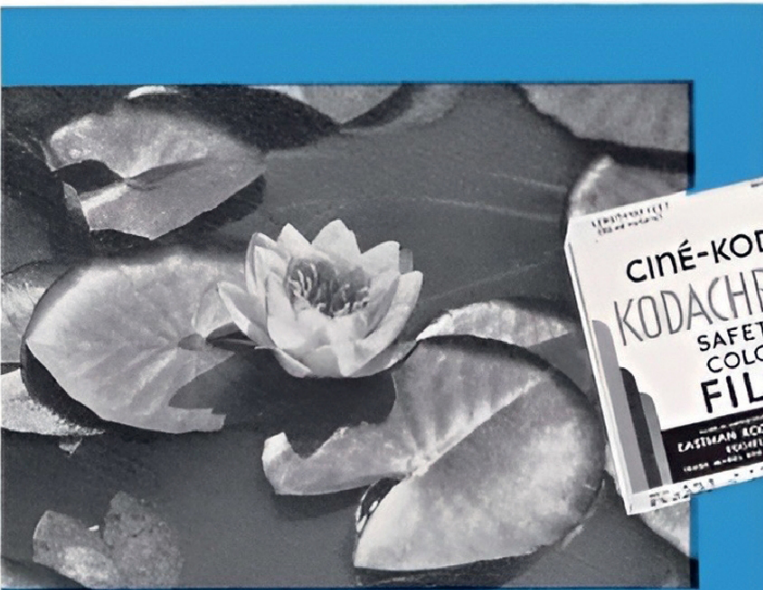
A tilting screw gives positive leveling control.

For crisp, clear pictures, whether you want them in black-and-white or in full color, use

CINÉ-KODAK FILM

CINÉ-KODAKS take the best pictures when loaded with Ciné-Kodak Films. Described here are the Eastman-made 8 mm. and 16 mm. black-and-white and full-color Kodachrome Films that make it easy for movie makers to shoot good pictures indoors as well as outdoors, in winter as well as in summer, in the daytime as well as at night.

The initial cost of Ciné-Kodak Film is the last cost. The original price you pay for it includes its finishing at Eastman processing laboratories the world over. A complete list of these processing stations may be secured upon request from any Ciné-Kodak dealer. Ask him for a copy of "Take a Kodak with You."



KODACHROME FILM

The full-color outdoor film that is as easy to use as black-and-white film. May be used indoors with Photoshoots provided a Kodachrome Filter for Photoshoot is placed in front of the camera lens. May be used without a filter with Daylight Photoshoots. Available for 8 mm. Ciné-Kodaks, and in 50-foot rolls, 50-foot magazines, and 100-foot rolls for 16 mm. cameras.

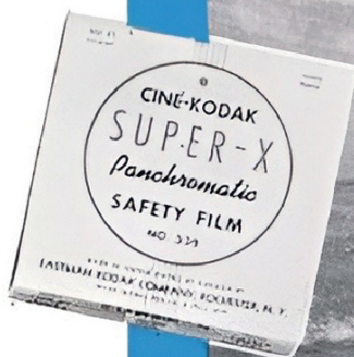


KODACHROME FILM, TYPE A

A full-color film especially color balanced for making movies under Photoshoot lighting. May be used for making pictures outdoors provided a Type A Kodachrome Filter for Daylight is placed in front of the camera lens. Available for 8 mm. Ciné-Kodaks, and in 50-foot rolls, 50-foot magazines, and 100-foot rolls for 16 mm. cameras.

CINÉ-KODAK SUPER-X "PAN" FILM

An excellent "all-purpose" 16 mm. black-and-white film. Reproduces colors in their true monochrome relationship. Its superfine quality, fine grain, great brilliance, and speed make it ideal for general outdoor filming and for making indoor pictures by Photoflood light. Available in 50-foot rolls, 50-foot magazines, and 100-foot rolls.



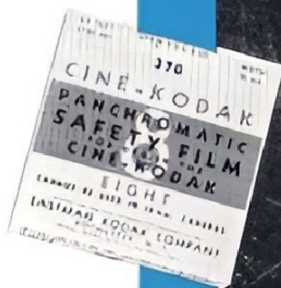
CINÉ-KODAK SUPER-XX "PAN" FILM

An extremely fast 16 mm. black-and-white film especially suited for making movies indoors by the light of ordinary Mazda bulbs or No. 1 Photofloods and for filming such well-lighted subjects as boxing bouts, night basketball and baseball games, and spot-lighted actors on theater stages. Available in 50-foot rolls, 50-foot magazines, and 100-foot rolls.



CINÉ-KODAK EIGHT "PAN" FILM

A black-and-white panchromatic film for 8 mm. Ciné-Kodaks. Reproduces all the colors of nature in their true monochrome relationship. Gives excellent results under ordinary light conditions outdoors, and is fast enough for shooting movies indoors by the light of Mazda Photoflood lamps in Kodaflectors.



CINÉ-KODAK SAFETY FILM

A general utility 16 mm. black-and-white Ciné-Kodak Film. Ideal for title making and filming record pictures for which the special qualities of the other Ciné-Kodak Films are deemed unnecessary. Ciné-Kodak Safety Film is available only in 100-foot rolls. It is not supplied in magazines.



Your Ciné-Kodak dealer will be glad to show you these

HOME MOVIE ACCESSORIES

Ask him for a copy of the complete catalog, "HOME MOVIE ACCESSORIES for use with Ciné-Kodaks and Kodascopes."



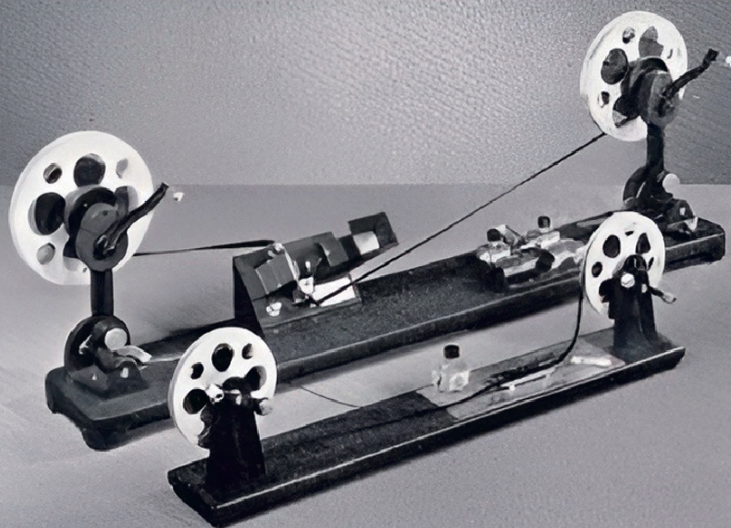
Carrying Cases—There is a carrying case available for every Ciné-Kodak and Kodascope. Ask your dealer to show you one for your camera or projector.



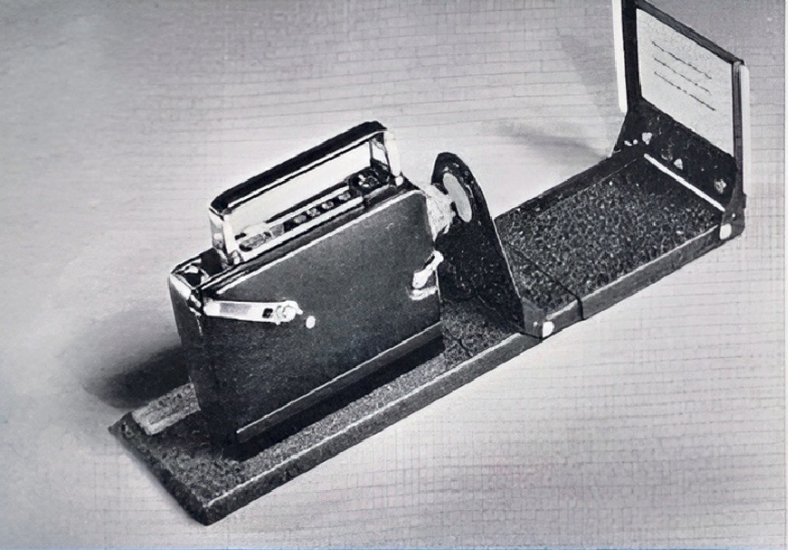
Accessory Lenses—A telephoto lens, a wide-angle lens, or a portrait attachment will greatly increase your movie-making enjoyment. Ask your dealer about them.



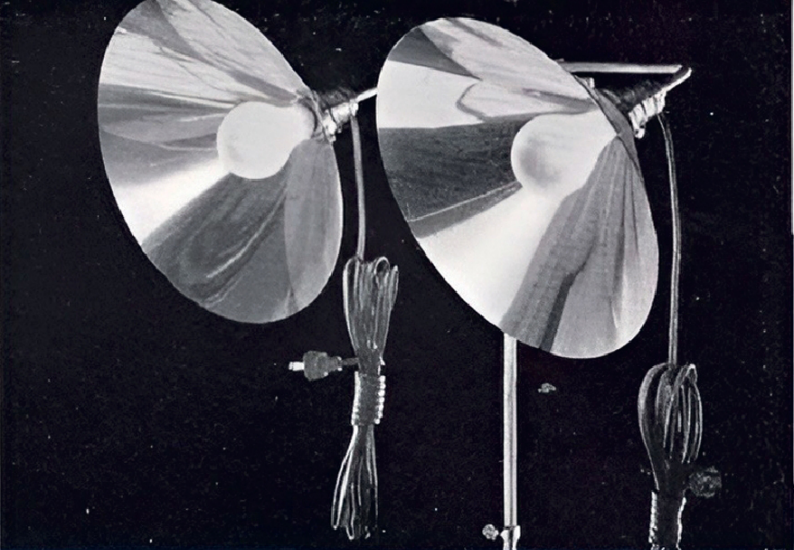
Kodascope Reels, Cans, and Clips—Ciné-Kodak Films should be spooled on Kodascope Reels and fastened with clips, then stored in film cans for safekeeping.



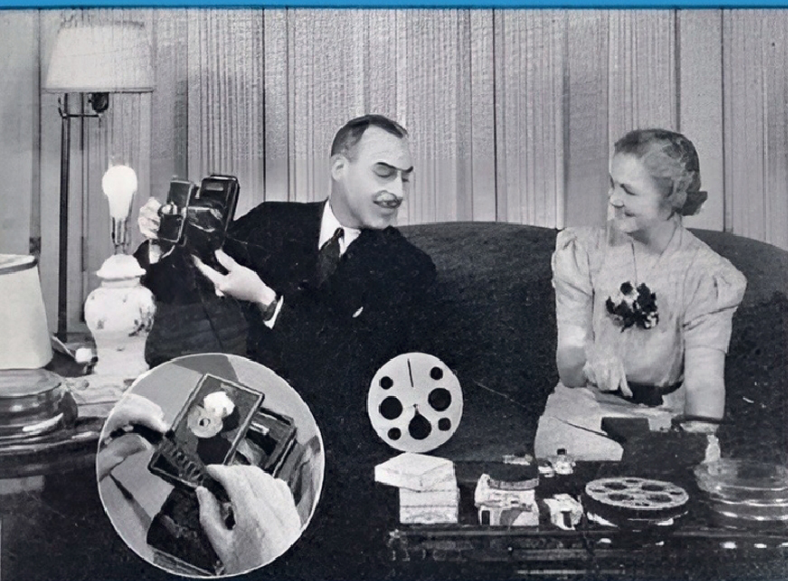
Kodascope Editing Equipment—You'll find Kodascope Rewinds, Splicers, Movie Viewers and other editing aids will help simplify the job of "fixing-up" your films.



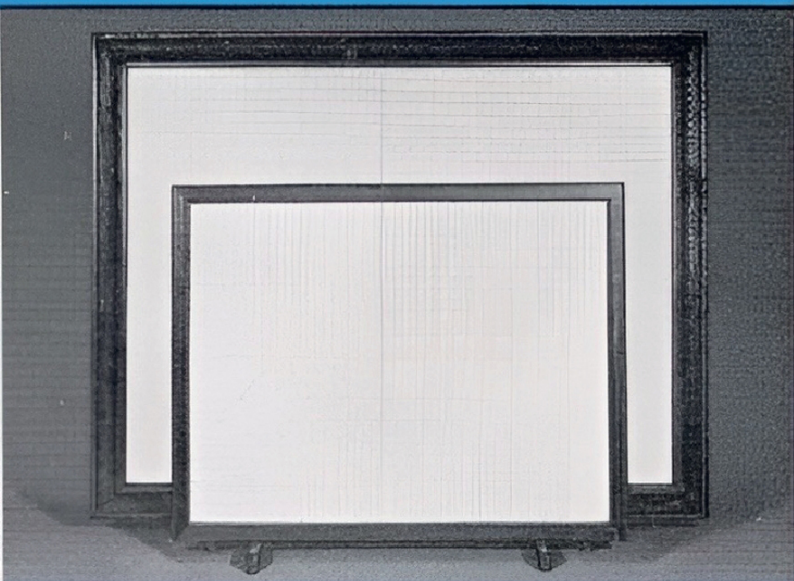
Ciné-Kodak Titrer—This handy and inexpensive device makes it easy to film your own titles typed or lettered on cards, snapshots, or pieces of wallpaper.



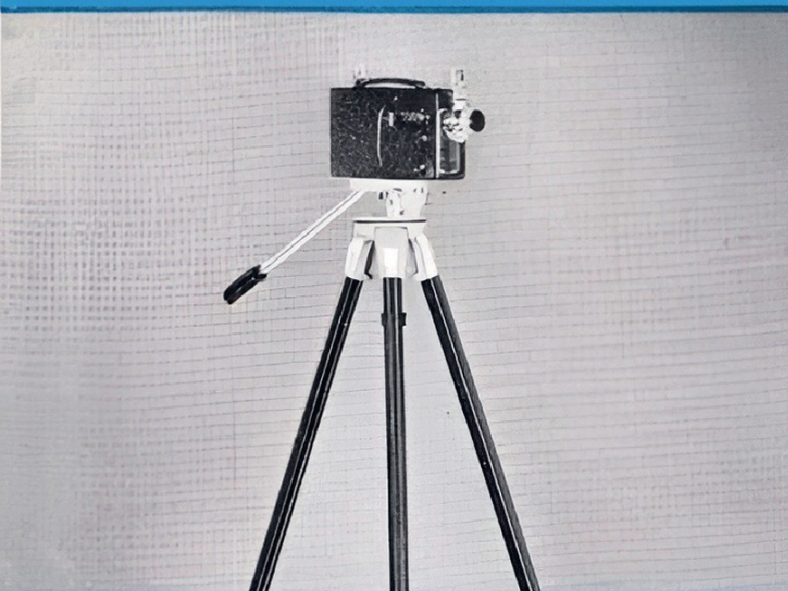
Kodaflector—For movies by artificial light, this low-cost twin-reflector unit will prove a big help in making your filming job an easy one.



Kodak 16 mm. Enlarger—With this accessory, negatives about $2\frac{3}{8}'' \times 3\frac{1}{4}''$ for contact printing may be made of single frames from 16 mm. Ciné-Kodak Films.



Kodascope Screens—Two silver-surfaced screens are available to movie makers. The smaller, No. 25, is $16\frac{1}{2}'' \times 22''$; the larger, No. 0, is $22'' \times 30''$.



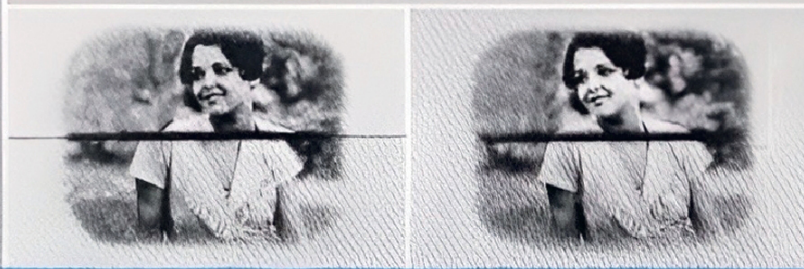
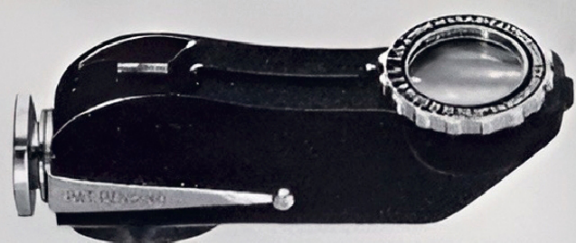
Ciné-Kodak Tripod—Little short of a necessity for telephoto lenses. Will also do much to improve shots made with standard-lens-equipped cameras.



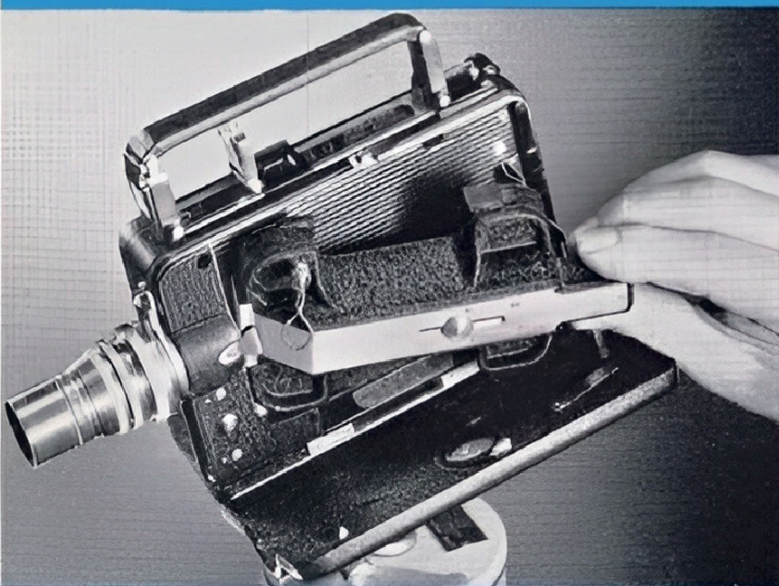
"How to Make Good Movies"—A book every movie maker should have. Contains more than 200 pages of helpful aids on the taking and showing of home movies.



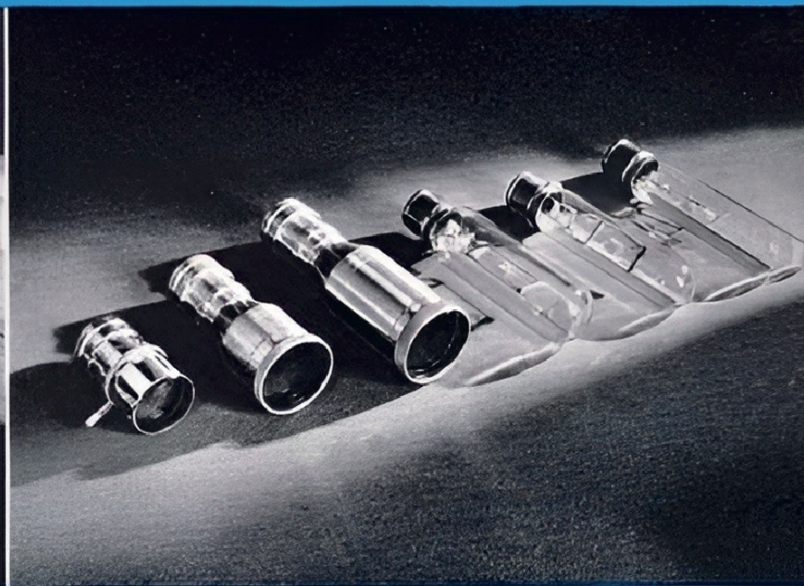
Ciné-Kodak Filters—Color Filters used with black-and-white film, and Haze Filters with Kodachrome will do much to improve your scenic and distant shots.



Kodak Pocket Range Finder—Owners of motion picture cameras with focusing lenses will find that the Range Finder, pictured above, banishes all guesswork in focusing.



Focusing Finder for Magazine Ciné-Kodak—Slips into the camera and shows a section of the lens field at high magnification and the actual field covered by the lens.



Kodascope Lamps and Lenses—Available for 16 mm. Kodascopes are extra lamps and lenses for adopting Eastman-made projectors to meet most projection needs.



Cinegraphs—You can add a touch of Hollywood to home shows with Cinegraphs—professionally-made 8 mm. and 16 mm. reels of dramas, comedies, and travel pictures.



Oil, Cement, and Cleaners—You'll want Kodascope Oil for your projector, Kodascope Film Cement for splicing, and Ciné Film Cleaner for cleaning your films.



The pictures at the left above demonstrate what can be done with a Ciné-Kodak equipped with a standard 1-inch lens, a 2½-inch lens, and a 6-inch telephoto from a single camera position.

The pictures at their right show that Eastman-made projectors can be easily adapted for wide-angle, medium-length, and long projection "throws."

WITH

Kodachrome



MOVIES IN FULL COLOR ARE AS EASY TO MAKE AS MOVIES IN BLACK-AND-WHITE...WITH EITHER 8 MM. OR 16 MM. CINÉ-KODAKS